



CHORUS

This is the accepted manuscript made available via CHORUS. The article has been published as:

Enhanced Nonadiabaticity in Vortex Cores due to the Emergent Hall Effect

André Bisig, Collins Ashu Akosa, Jung-Hwan Moon, Jan Rhensius, Christoforos Moutafis, Arndt von Bieren, Jakoba Heidler, Gillian Kiliani, Matthias Kammerer, Michael Curcic, Markus Weigand, Tolek Tyliczszak, Bartel Van Waeyenberge, Hermann Stoll, Gisela Schütz, Kyung-Jin Lee, Aurelien Manchon, and Mathias Kläui

Phys. Rev. Lett. **117**, 277203 — Published 30 December 2016

DOI: [10.1103/PhysRevLett.117.277203](https://doi.org/10.1103/PhysRevLett.117.277203)

Enhanced Non-Adiabaticity in Vortex Cores due to the Emergent Hall Effect

André Bisig,^{1,2,3,4,5,*} Collins Ashu Akosa,⁶ Jung-Hwan Moon,⁷ Jan Rhensius,^{1,4} Christoforos Moutafis,^{1,3,4} Arndt von Bieren,^{1,3} Jakoba Heidler,^{1,3,4} Gillian Kiliani,¹ Matthias Kammerer,² Michael Curcic,² Markus Weigand,² Tolek Tyliczszak,⁸ Bartel Van Waeyenberge,⁹ Hermann Stoll,² Gisela Schütz,² Kyung-Jin Lee,^{7,10} Aurelien Manchon,^{6,†} and Mathias Kläui^{1,3,4,5,‡}

¹*Department of Physics, University of Konstanz, 78457 Konstanz, Germany*

²*Max Planck Institute for Intelligent Systems, 70569 Stuttgart, Germany*

³*Institute of Condensed Matter Physics, École Polytechnique Fédérale de Lausanne, 1015 Lausanne, Switzerland*

⁴*Paul Scherrer Institute, 5232 Villigen PSI, Switzerland*

⁵*Institut of Physics, Johannes Gutenberg University Mainz, 55099 Mainz, Germany*

⁶*King Abdullah University of Science and Technology (KAUST),*

Physical Science and Engineering Division, Thuwal 23955-6900, Saudi Arabia

⁷*Department of Materials Science and Engineering, Korea University, Seoul 136-713, Korea*

⁸*Advanced Light Source, LBNL, CA 94720 Berkeley, USA*

⁹*Department of Solid State Sciences, Ghent University, 9000 Ghent, Belgium*

¹⁰*KU-KIST Graduate School of Converging Science and Technology, Korea University, Seoul 136-713, Korea*

(Dated: September 28, 2016)

We present a combined theoretical and experimental study, investigating the origin of the enhanced non-adiabaticity of magnetic vortex cores. Scanning transmission X-ray microscopy is used to image the vortex core gyration dynamically to measure the non-adiabaticity with high precision, including a high confidence upper bound. We show theoretically that the large non-adiabaticity parameter observed experimentally can be explained by the presence of local spin currents arising from a texture-induced emergent Hall effect. This study demonstrates that the magnetic damping α and non-adiabaticity parameter β are very sensitive to the topology of the magnetic textures, resulting in an enhanced ratio ($\beta/\alpha > 1$) in magnetic vortex cores or skyrmions.

The electrical control of magnetic textures through spin angular momentum transfer has attracted a massive amount of interest in the past ten years [1]. As spin torque-induced magnetization manipulation exhibits favorable scaling [2, 3], it underlies novel concepts to store information in non-volatile devices, such as the race-track memory [4] or the spin-transfer torque random access memory [5]. Recent progress includes the manipulation of two and three-dimensional chiral magnetic textures, known as magnetic skyrmions [6–10], which constitute an inspiring paradigm for potential applications [11]. The dynamics of a magnetic texture $\mathbf{M}(\mathbf{r}, t) = M_s \mathbf{m}(\mathbf{r}, t)$, with M_s being the saturation magnetization, induced by spin transfer torque is usually modeled by the extended phenomenological Landau-Lifshitz-Gilbert (LLG) equation [12, 13]

$$\begin{aligned} \dot{\mathbf{m}} = & -\gamma \mathbf{m} \times \mathbf{H}_{\text{eff}} + \alpha \mathbf{m} \times \dot{\mathbf{m}} \\ & - b_J (\mathbf{u} \cdot \nabla) \mathbf{m} + \beta b_J \mathbf{m} \times (\mathbf{u} \cdot \nabla) \mathbf{m}, \end{aligned} \quad (1)$$

where the first two terms describe the damped precession of magnetization around the effective magnetic field \mathbf{H}_{eff} , with γ denoting the gyromagnetic ratio and α being the viscous Gilbert damping parameter. In the present work, α refers to the damping of the homogeneous magnetic texture, which is different from the effective damping α_{vc} felt by the vortex core, as discussed below. The third term describes the adiabatic momentum transfer from the spin polarized conduction electrons to the local magnetization [14], where $b_J \mathbf{u} = \mathbf{j}_e P \mu_B / e M_s$ is the spin

drift velocity and P is the spin polarization of the conduction electrons. The last term ($\sim \beta b_J$) is the so-called non-adiabatic spin transfer torque, which describes the (possibly non-local) torques that do not result from the adiabatic spin transfer [12, 13]. The magnitude of the non-adiabaticity parameter β , and in particular the ratio β/α , plays a crucial role in the device performance, as it governs the domain wall velocity [12, 13]. Yet, the physical origin and magnitude of the non-adiabaticity parameter are still under debate, calling for an in-depth understanding of spin transport in magnetic textures.

It has been experimentally shown that the ratio β/α depends on the domain wall structure, transverse or vortex domain walls in soft magnetic nanostructures [15–18], or 180°-Bloch or Néel domain walls in materials with perpendicular magnetic anisotropy [19]. Vortex walls and vortex cores in discs and rectangular elements exhibit a large non-adiabaticity $\beta \approx 8 - 10\alpha$ [16–18] compared to transverse domain walls $\beta \approx \alpha$ [17], albeit with some uncertainty. This large non-adiabaticity is usually attributed to mistrack between the itinerant spin momentum and the local magnetization [14] due to the large texture gradients present in the vortex core (radius of the vortex core < 10 nm). However, the non-adiabaticity in very narrow Bloch domain walls (domain wall width of about 1 nm) in FePt nanowires is not significantly increased [19], suggesting that spin mistracking might not be the dominant mechanism for non-adiabaticity.

In this Letter, we present a combined theoretical

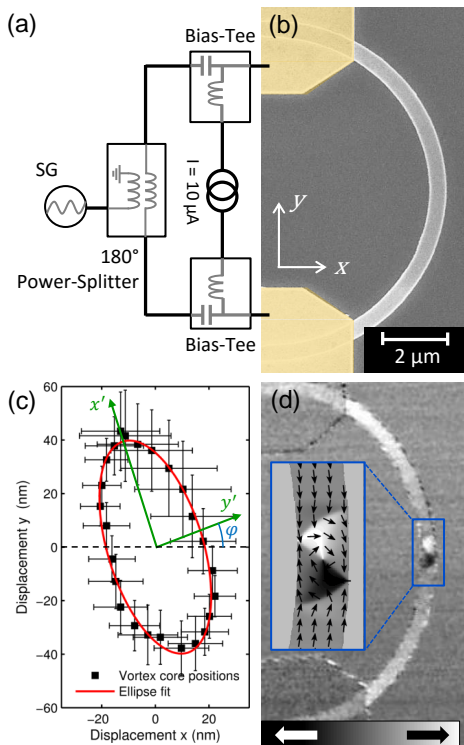


FIG. 1. (Color online) (a) Schematic illustration of the microwave injection setup. (b) A scanning electron micrograph of the permalloy nanowire under investigation and the two gold contacts on top and at the bottom (yellow). (c) The vortex core positions extracted from the time-resolved images are plotted (black squares). The elliptical vortex core trajectory (red ellipse) is fitted through the data points. (d) A STXM image showing XMCD contrast of a vortex domain wall at the center of the nanowire.

and experimental effort to uncover the origin of non-adiabaticity in magnetic vortex cores. Using scanning transmission X-ray microscopy to image the dynamics of a magnetic vortex core, we first measure the non-adiabaticity parameter with high precision $\beta_{vc} = 0.061 \pm 0.006$ and deduce a high confidence upper bound $\beta_{vc} \leq 0.11 \pm 0.01$. Then, based on analytical and numerical calculations, we explain such an enhanced non-adiabaticity by the emergence of a Hall effect due to the two dimensional topology of the magnetic texture, an effect absent in one-dimensional domain walls.

To measure the non-adiabaticity β_{vc} of the vortex core, we dynamically imaged the steady state gyration of the vortex core within a vortex domain wall, induced by alternating spin-polarized currents. We study vortex domain walls in a 30 nm thick and 500 nm wide permalloy ($\text{Ni}_{80}\text{Fe}_{20}$) half-ring with a radius of 5 μm , see Fig. 1(b). The half-rings were fabricated on top of a 100 nm thick silicon nitride (Si_3N_4) membrane by electron-beam lithography, molecular beam evaporation in UHV and lift-off processing. To improve cool-

ing, a 150 nm thick aluminum nitride layer was deposited on top of the structures and on the backside of the Si_3N_4 membrane. The wires are connected by $\text{Cr}(4 \text{ nm})/\text{Au}(100 \text{ nm})$ contacts, which are placed more than 4 μm from the center of the nanowire [see Fig. 1(b)], to minimize in-plane Oersted fields from vertical electrical currents flowing from the contacts into the nanowire [20]. At the position of the vortex wall, the in-plane field component is negligible ($B < 2 \mu\text{T}$) [20], and therefore, we can assume that the vortex gyration is purely induced by the spin transfer torque. Alternating currents $j_e(t) = \cos(2\pi ft) \cdot 8.7 \cdot 10^{10} \text{ Am}^{-2}$ are then injected into the nanowire with different frequencies f , while measuring the sample resistance with a small direct current $I = 10 \mu\text{A}$, to measure the microwave power within the nanowire and keep the current density constant at all frequencies [21], see Fig. 1(a). The response of the magnetization to the spin currents was imaged employing time-resolved scanning transmission X-ray microscopy (STXM) at the Advanced Light Source in Berkeley, CA, USA (beamline 11.0.2) [22] and at the MAXYMUS end-station, Helmholtz Zentrum Berlin, BESSY II, Germany. In-plane magnetic contrast is obtained by tilting the sample by 60° with respect to the X-ray beam and by taking advantage of the X-ray magnetic circular dichroism (XMCD) [23]. The data is recorded at the Ni L_3 absorption edge (852.7 eV). The lateral resolution is $\approx 25 \text{ nm}$ and the limiting temporal resolution is given by the width of the X-ray photon flashes ($< 70 \text{ ps}$).

The injection of alternating spin-polarized currents through a vortex structure results in the resonant gyrotropic motion of the vortex core. [24, 25] To analyze the acting torques, we use Thiele's model [13, 26–28], which describes the motion of the vortex core as a quasiparticle in a restoring potential $V(\mathbf{r})$

$$\mathbf{F}_{\text{st}} + \nabla_{\mathbf{r}} V(\mathbf{r}) + \mathbf{G} \times [b_{\text{J}} \mathbf{u} - \dot{\mathbf{r}}] = \mathcal{D} [\beta_{vc} b_{\text{J}} \mathbf{u} - \alpha_{vc} \dot{\mathbf{r}}], \quad (2)$$

where $\mathbf{G} = -Gp\mathbf{z}$ is the gyrovector, $\mathcal{D}_{ij} = \delta_{ij}D$ is the diagonal dissipation tensor [29] and α_{vc} is the damping of the vortex core associated with the Gilbert damping parameter. In a vortex domain wall the parabolic restoring potential is asymmetric and tilted with respect to the current flow $V(\mathbf{r}) = \kappa_{x'} \frac{r_{x'}^2}{2} + \kappa_{y'} \frac{r_{y'}^2}{2}$, where $\kappa_{x'}$, $\kappa_{y'}$ are the potential stiffnesses and $\mathbf{r} = (r_{x'}, r_{y'})$ is the displacement of the vortex core from its equilibrium position [20, 30, 31]. The coordinate system (x', y') is tilted by an angle ϕ with respect to the nanowire (x, y) and aligns with the parabolic potential (without loss of generality $\kappa_{y'} < \kappa_{x'}$). The resulting motion of the vortex core follows an elliptical trajectory [30]. The analytical description of the vortex core trajectory in steady-state and in an asymmetric and tilted potential can be found in the Supplemental Materials [32].

Equation (2) describes the motion of the vortex core as a quasiparticle in a restoring potential $V(\mathbf{r})$ under the excitation of the force $\mathbf{F}_{\text{st}} = \mathbf{F}_{\text{ad}} + \mathbf{F}_{\text{nad}}$ from spin-polarized

currents that act via the (non-) adiabatic spin-transfer torque on the vortex core [16, 30, 33]. The direction of this force, given by the angle θ , can be calculated in the quasi-static limit for $\dot{\mathbf{r}} = 0$. It depends on the strength of the non-adiabaticity β_{vc} , on the tilt angle ϕ and the asymmetry $r = \kappa_{y'}/\kappa_{x'}$ of the parabolic potential

$$\tan \theta = \frac{G \cos \phi + \beta_{\text{vc}} D \sin \phi}{-G \sin \phi + \beta_{\text{vc}} D \cos \phi} \frac{\kappa_{y'}}{\kappa_{x'}}. \quad (3)$$

Therefore, when the shape of the restoring potential $V(\mathbf{r})$ and the direction of the force θ is known, we can calculate the non-adiabaticity of the vortex core β_{vc} . Both, r and ϕ are a priori unknown for the particular vortex domain wall under investigation and must be determined experimentally, in our case by recording the elliptical vortex core trajectory close to resonance at $f = 210$ MHz [20]. The positions of the vortex core and the elliptical vortex core trajectory are plotted in Fig. 1(c). The error bars indicate the uncertainty of the individual vortex core positions from the experimental images. By fitting an elliptical vortex core trajectory we find $\phi = 0.29 \pm 0.02$ rad and $r = 0.19 \pm 0.01$, the error bars include the uncertainty of the resonance frequency. Equation (3) allows us to deduce a maximum bound for β_{vc} from the qualitative behavior of the phase response and through the sign of the denominator [32].

The phase response ϵ_y of the vortex core to alternating spin-polarized currents (measured along the y -direction) directly depends on the direction θ of the driving force, and therefore on the non-adiabaticity β_{vc} , see Fig. 2. Knowing ϕ and r , and taking $G = 0.86$ pN·s/m, $D = 2.4$ pN·s/m [32], we can fit the phase response ϵ_y with the Thiele model to determine the resonance frequency $f_r = 194 \pm 6$ MHz, the non-adiabaticity $\beta_{\text{vc}} = 0.061 \pm 0.006$ and damping $\alpha_{\text{vc}} = 0.006 \pm 0.001$. The fit also depends on the ratio between the magnitudes of the gyrovector \mathbf{G} and the dissipation tensor \mathcal{D} , which only moderately depend on the sample geometry [16, 34]. Experimentally, this phase response ϵ_y was measured by fitting a sinusoidal response through the dynamic differential XMCD contrast at the position of the vortex core. The differential images are obtained by the division of each time-resolved image by the sum of all images. The differential intensity at the region of the vortex core gyration is directly proportional to the displacement of the vortex core in vertical direction.

This high value for β_{vc} , and in particular the ratio $\beta_{\text{vc}}/\alpha_{\text{vc}} = 10.4 \pm 0.3$, is in good agreement with the values obtained by measuring the steady state vortex core displacement [16], by observing thermally assisted domain wall dynamics [17], or by imaging the frequency dependent vortex core trajectories [18]. However, such a high non-adiabaticity at the vortex core is in contrast with the much lower non-adiabaticity measured for one dimensional domain walls [17, 19] and to the best of our knowledge, none of the existing models properly account

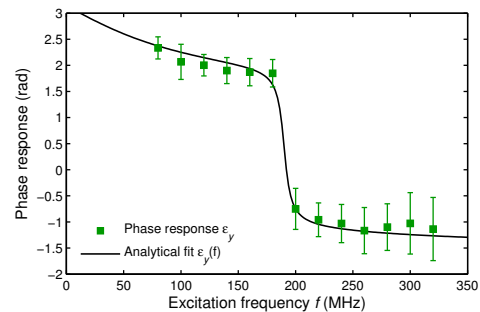


FIG. 2. (Color online) The phase response of the vortex core gyration is plotted as a function of the excitation frequency f , measured experimentally (green squares) and fitted analytically (black line). The error bars include the systematic timing error of the individual time-resolved snapshots given by the electron bunch length and the excitation frequency.

for such a large enhancement. Spin relaxation produces a local non-adiabatic torque $\beta_{\text{sf}} \approx 0.010 \sim \alpha$ [12, 17] that dominates in smoothly varying magnetic textures but cannot explain the observed non-adiabaticity in vortices. Spin mistracking [14] is only significant for extremely sharp domain walls and exponentially vanishes for textures smoother than the spin precession length [35–37]. For instance, Ref. 37 estimates $\beta_{\text{sm}} \approx 0.0045$ for a domain wall width of 2.7 nm. Note that β_{sm} can be dramatically enhanced by disorder, although it is questionable whether this effect remains efficient in textures much sharper than the mean free path [38]. Finally, anomalous Hall effect produces non-adiabaticity in vortex cores only [39] but in our system this contribution is negligible ($\beta_{\text{AHE}} \approx 0.0016$) due to the small Hall angle of permalloy ($\alpha_{\text{H}} = 1\%$) [40]. Therefore, it appears that none of the models proposed to date reasonably explain the experimental observations [16–18].

We look for a non-adiabatic torque that is present in vortices only, absent in transverse walls and that does not require extreme magnetization gradients nor strong disorder. Let us consider a clean magnetic system, free from disorder and spin relaxation, with a texture smooth enough so that spin mistracking (i.e. linear momentum transfer [14]) can be neglected. In this system, the itinerant electron spin experiences an emergent electromagnetic field in the frame of the local quantization axis [41]. This field can be expressed as [42, 43] (see Ref. [32])

$$E_i^\sigma = \sigma(\hbar/2e)(\partial_t \mathbf{m} \times \partial_i \mathbf{m}) \cdot \mathbf{m}, \quad (4)$$

$$B_i^\sigma = -\sigma(\hbar/2e)\epsilon_{ijk}(\partial_j \mathbf{m} \times \partial_k \mathbf{m}) \cdot \mathbf{m}, \quad (5)$$

where $\sigma = \pm$ refers to the spin projection on the local quantization axis \mathbf{m} , ϵ_{ijk} is Levi-Civita's symbol and $\{i, j, k\} = \{x, y, z\}$. This local electromagnetic field changes sign for the two opposite spins and emerges in the presence of magnetization gradient only. As a result, the spin-dependent charge current reads

$$\mathbf{j}_e^\sigma = G_\sigma \mathbf{E} + G_\sigma \mathbf{E}^\sigma + (G_\sigma^2/en)\mathbf{E} \times \mathbf{B}^\sigma, \quad (6)$$

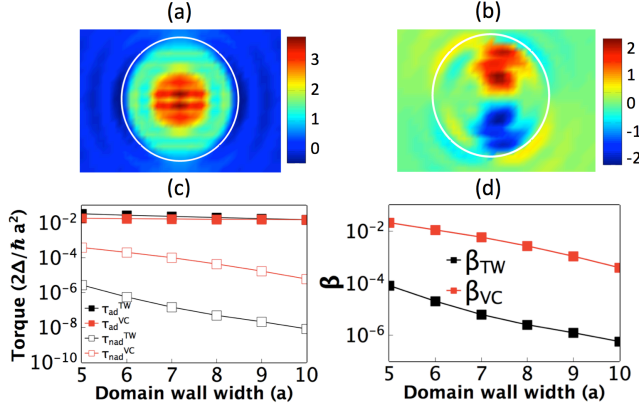


FIG. 3. (Color online) (a,b) Two dimensional profile of the adiabatic (a) and non-adiabatic torques (b) at the vortex core. The position of the vortex core is indicated by the white solid line and the torque magnitude is expressed as $\tau_{\parallel,\perp}(\hbar a^2/2\Delta)(\sin^2 \vartheta/r_0^2) \times 10^3$, where $r_0 = 8a$, a being the lattice parameter. (c,d) Effective adiabatic and non-adiabatic torques (c) and corresponding ratio (d) for a magnetic vortex core (red symbols) and transverse Néel wall (black symbol) as a function of the core size and domain wall width, respectively.

where G_σ is the conductivity of spin σ , n is the electron density and \mathbf{E} is the applied electric field. The first term is the conventional Ohm's law, the second term is induced by the so-called spin-motive force [41], while the last term is the Hall effect generated by the local magnetic field. This emergent Hall effect is responsible for the topological Hall effect observed in topologically non-trivial magnetic textures such as skyrmions [44]. The induced spin current tensor can be then written

$$\mathcal{J}^s = -b_J \mathbf{m} \otimes \mathbf{u} + \eta \sum_i [\mathbf{m} \cdot (\partial_i \mathbf{m} \times \partial_i \mathbf{m})] \mathbf{m} \otimes \mathbf{e}_i + \lambda^2 b_J [\mathbf{m} \cdot (\partial_x \mathbf{m} \times \partial_y \mathbf{m})] \mathbf{m} \otimes \mathbf{z} \times \mathbf{u}, \quad (7)$$

where we defined $\eta = g\hbar\mu_B G_0/4e^2 M_s$, $\lambda^2 = \hbar G_0/e^2 nP$, $G_0 = G_\uparrow + G_\downarrow$ is the conductivity, and \otimes is the direct product between spin space and real space. The absorption of this spin current produces a torque on the magnetic texture, $\boldsymbol{\tau} = -\nabla \cdot \mathcal{J}^s$, that reads

$$\boldsymbol{\tau} = b_J (\nabla \cdot \mathbf{u}) \mathbf{m} - \eta \sum_i [\mathbf{m} \cdot (\partial_i \mathbf{m} \times \partial_i \mathbf{m})] \partial_i \mathbf{m} - \lambda^2 b_J [\mathbf{m} \cdot (\partial_x \mathbf{m} \times \partial_y \mathbf{m})] ([\mathbf{z} \times \mathbf{u}] \cdot \nabla) \mathbf{m}. \quad (8)$$

The first term is the conventional adiabatic torque. The second term, proportional to the temporal gradient of the magnetization ($\sim \partial_t \mathbf{m}$) is a correction to the magnetic damping [43] and the third term is the contribution from the emergent Hall effect.

To evaluate the effect of these torques on the magnetic vortex dynamics, we consider an isolated vortex core defined by $\mathbf{m} = (\sin \vartheta \cos \varphi, \sin \vartheta \sin \varphi, \cos \vartheta)$, with $\vartheta(x, y) = 2 \tan^{-1}(r/r_0)$ for $r = \sqrt{x^2 + y^2} \leq r_0$, $\vartheta = \pi/2$

for $r_0 \leq r \leq R$, and $\varphi = \text{Arg}(x, y) + \pi/2$, where r_0 (R) is the inner (outer) radius of the vortex core [45]. Assuming rigid vortex core motion [26], where $\partial_t \mathbf{m} = -(\mathbf{v} \cdot \nabla) \mathbf{m}$, we obtain the velocity $\mathbf{v} = v_x \mathbf{x} + v_y \mathbf{y}$ of the vortex core

$$v_x = -(1 + \mathcal{C} \alpha_{vc} \beta_{vc}) / (1 + \mathcal{C}^2 \alpha_{vc}^2) b_J, \quad (9)$$

$$v_y = \mathcal{C} (\alpha_{vc} - \beta_{vc}) / (1 + \mathcal{C}^2 \alpha_{vc}^2) b_J, \quad (10)$$

where $\mathcal{C} = 1 + \ln \sqrt{R/r_0}$, $\alpha_{vc} = \alpha + (7/3\mathcal{C})(\eta/r_0^2)$ and $\beta_{vc} = \beta + (7/3\mathcal{C})(\lambda^2/r_0^2)$ are the renormalized damping and non-adiabatic coefficient. Here, $\beta \approx \alpha$ is the constant non-adiabaticity parameter measured, e.g., in transverse walls. Using $G_0 = 10^7 \Omega^{-1} \cdot \text{m}^{-1}$, $n = 5 \times 10^{28} \text{ m}^{-3}$, $P = 0.5$, and $M_s = 800 \text{ emu/cc}$, we get $\eta = 0.24 \text{ nm}^2$ and $\lambda^2 = 1.6 \text{ nm}^2$. As a consequence, we obtain $\beta_{vc} \approx 0.054$ and $\alpha_{vc} \approx 0.013$. These estimations, derived in the framework of the s - d model, disregard the spd hybridization of transition metals. Furthermore, they assume adiabatic spin transport, neglecting spin mistracking and thereby underestimating the non-adiabaticity. Nevertheless, it clearly indicates that the local spin current induced by the emergent Hall effect [$\sim \partial_x \mathbf{m} \times \partial_y \mathbf{m}$ in Eq. (8)] dramatically enhances the non-adiabaticity of the spin-texture, an effect absent in one-dimensional domain walls where only the magnetic damping is enhanced [43].

To properly account for spin mistracking and obtain a more accurate estimate of the torque, we numerically compute the spin transport in a vortex core using the tight-binding model described in Ref. 38 (see Ref. [32] for details). The torque is obtained from the local nonequilibrium spin density $\delta \mathbf{S}$, such that $\boldsymbol{\tau} = (2\Delta/\hbar) \mathbf{m} \times \delta \mathbf{S}$, Δ being the exchange parameter. It is then parsed into adiabatic and non-adiabatic components, $\boldsymbol{\tau} = \tau_{ad} \nabla_x \mathbf{m} + \tau_{nad} \mathbf{m} \times \nabla_x \mathbf{m}$, reported on Fig. 3(a) and (b), respectively. While τ_{ad} is distributed homogeneously around the center of the core, τ_{nad} is asymmetric along the direction transverse to the applied electric field, reflecting the Hall effect origin of the torque. To evaluate the effective non-adiabaticity parameter, the torque components must be averaged over the volume Ω of the core texture according to Thiele's equation

$$\langle \tau_{ad} \rangle = \frac{\int d\Omega \tau_{ad} (\partial_x \vartheta \partial_y \varphi - \partial_y \vartheta \partial_x \varphi) \sin \vartheta}{\int d\Omega (\partial_x \vartheta \partial_y \varphi - \partial_y \vartheta \partial_x \varphi) \sin \vartheta}, \quad (11)$$

$$\langle \tau_{nad} \rangle = \frac{\int d\Omega \tau_{nad} [(\partial_x \vartheta)^2 + \sin \vartheta (\partial_x \varphi)^2]}{\int d\Omega [(\partial_x \vartheta)^2 + \sin \vartheta (\partial_x \varphi)^2]}. \quad (12)$$

The results are shown in Fig. 3(c) as a function of the width of the core (red symbols). To compare, we also report the values obtained in the case of a transverse Néel domain wall of same width (black symbols). While the adiabatic torques are about the same magnitude in both cases, the non-adiabaticity in the vortex core is much larger than in the transverse wall, resulting in a large non-adiabaticity parameter β [see Fig. 3(d)]. The large non-adiabaticity in vortex cores is attributed to the emergent Hall effect reported in Fig. 3(b).

In conclusion, we have determined the non-adiabaticity of a magnetic vortex core $\beta_{vc} = 0.061 \pm 0.006$ using a highly sensitive phase shift method. We derived a maximum bound by analyzing the qualitative behaviour of the phase response, and conclude $0.041 < \beta_{vc} < 0.11$. To explain such a high non-adiabaticity at the vortex core we proposed that the texture-induced emergent Hall effect generates non-local non-adiabatic torques. The values obtained by the theory are consistent with the experimental observations. These results are particularly encouraging for the manipulation of current-driven two and three dimensional textures such as skyrmions.

The authors acknowledge support by the German Science Foundation (DFG SFB 767, KL1811, MAINZ GSC 266), the ERC (MASPIC 2007-Stg 208162), the EU (RTN Spinswitch, MRTN CT-2006-035327, MAGWIRE FP7-ICT-2009-5 257707), COMATT and the Swiss National Science Foundation. Part of this work was carried out at the MAXYMUS scanning X-ray microscope at HZB, BESSY II in Berlin. The Advanced Light Source is supported by the Director, Office of Science, Office of Basic Energy Sciences, of the U.S. Department of Energy under Contract No. DE-AC02-05CH11231. A.M. and C.A. are supported by the King Abdullah University of Science and Technology (KAUST) through the Award No CRG2_R2_13_MANC_KAUST.1 from the Office of Sponsored Research (OSR).

* andre.bisig@gmail.com

† aurelien.manchon@kaust.edu.sa

‡ klaeui@uni-mainz.de

- [1] O. Boulle, G. Malinowski, and M. Kläui, *Mater. Sci. Eng. R: Rep.* **72**, 159 (2011).
- [2] A. Yamaguchi, T. Ono, S. Nasu, K. Miyake, K. Mibu, and T. Shinjo, *Phys. Rev. Lett.* **92**, 077205 (2004).
- [3] K. Yamada, S. Kasai, Y. Nakatani, K. Kobayashi, H. Kohno, A. Thiaville, and T. Ono, *Nat. Mater.* **6**, 270 (2007).
- [4] S. S. P. Parkin, M. Hayashi, and L. Thomas, *Science* **320**, 190 (2008).
- [5] A. D. Kent and D. C. Worledge, *Nat. Nanotechnol.* **10**, 187 (2015).
- [6] F. Jonietz, S. Mühlbauer, C. Pfleiderer, A. Neubauer, W. Münzer, A. Bauer, T. Adams, R. Georgii, P. Böni, R. a. Duine, K. Everschor, M. Garst, and A. Rosch, *Science* **330**, 1648 (2010).
- [7] W. Jiang, P. Upadhyaya, W. Zhang, G. Yu, M. B. Jungfleisch, F. Y. Fradin, J. E. Pearson, Y. Tserkovnyak, K. L. Wang, O. Heinonen, S. G. E. te Velthuis, and A. Hoffmann, *Science* **349**, 283 (2015).
- [8] S. Woo, K. Litzius, B. Kruger, M.-Y. Im, L. Caretta, K. Richter, M. Mann, A. Krone, R. M. Reeve, M. Weigand, P. Agrawal, I. Lemesch, M.-A. Mawass, P. Fischer, M. Klauui, and G. S. D. Beach, *Nat Mater* **15**, 501 (2016).
- [9] O. Boulle, J. Vogel, H. Yang, S. Pizzini, D. de Souza Chaves, A. Locatelli, T. O. Mentes, A. Sala, L. D. Buda-Prejbeanu, O. Klein, M. Belmeguenai, Y. Roussigné, A. Stashkevich, S. M. Chérif, L. Aballe, M. Foerster, M. Chshiev, S. Auffret, I. M. Miron, and G. Gaudin, *Nat Nano* **11**, 449 (2016).
- [10] C. Moreau-Lucaire, C. Moutafis, N. Reyren, J. Sampaio, C. A. F. Vaz, N. Van Horne, K. Bouzehouane, K. Garcia, C. Deranlot, P. Warnicke, P. Wohlhüter, J. M. George, M. Weigand, J. Raabe, V. Cros, and A. Fert, *Nat Nano* **11**, 444 (2016).
- [11] A. Fert, V. Cros, and J. Sampaio, *Nat. Nanotechnol.* **8**, 152 (2013).
- [12] S. Zhang and Z. Li, *Phys. Rev. Lett.* **93**, 127204 (2004).
- [13] A. Thiaville, Y. Nakatani, J. Miltat, and Y. Suzuki, *Europhys. Lett.* **69**, 990 (2005).
- [14] G. Tatara and H. Kohno, *Phys. Rev. Lett.* **92**, 086601 (2004).
- [15] M. Kläui, *J. Phys.: Condens. Matter* **20**, 313001 (2008).
- [16] L. Heyne, J. Rhensius, D. Ilgaz, A. Bisig, U. Rüdiger, M. Kläui, L. Joly, F. Nolting, L. J. Heyderman, J. U. Thiele, and F. Kronast, *Phys. Rev. Lett.* **105**, 187203 (2010).
- [17] M. Eltschka, M. Wötzel, J. Rhensius, S. Krzyk, U. Nowak, M. Kläui, T. Kasama, R. E. Dunin-Borkowski, L. J. Heyderman, H. J. van Driel, and R. A. Duine, *Phys. Rev. Lett.* **105**, 056601 (2010).
- [18] S. D. Pollard, L. Huang, K. S. Buchanan, D. A. Arena, and Y. Zhu, *Nat. Commun.* **3**, 1028 (2012).
- [19] C. Burrowes, A. P. Mihai, D. Ravelosona, J.-V. Kim, C. Chappert, L. Vila, A. Marty, Y. Samson, F. Garcia-Sanchez, L. D. Buda-Prejbeanu, I. Tudosa, E. E. Fullerton, and J.-P. Attané, *Nat. Phys.* **6**, 17 (2009).
- [20] A. Bisig, J. Rhensius, M. Kammerer, M. Curcic, H. Stoll, G. Schütz, B. Van Waeyenberge, K. W. Chou, T. Tylliszczak, L. J. Heyderman, S. Krzyk, A. von Bieren, and M. Kläui, *Appl. Phys. Lett.* **96**, 152506 (2010).
- [21] D. Bedau, M. Kläui, S. Krzyk, U. Rüdiger, G. Faini, and L. Vila, *Phys. Rev. Lett.* **99**, 146601 (2007).
- [22] A. L. D. Kilcoyne, T. Tylliszczak, W. F. Steele, S. Fakra, P. Hitchcock, K. Franck, E. Anderson, B. Harteneck, E. G. Rightor, G. E. Mitchell, A. P. Hitchcock, L. Yang, T. Warwick, and H. Ade, *J. Synchrotron Rad.* **10**, 125 (2003).
- [23] G. Schütz, W. Wagner, W. Wilhelm, P. Kienle, R. Zeller, R. Frahm, and G. Materlik, *Phys. Rev. Lett.* **58**, 737 (1987).
- [24] S. Kasai, Y. Nakatani, K. Kobayashi, H. Kohno, and T. Ono, *Phys. Rev. Lett.* **97**, 107204 (2006).
- [25] M. Bolte, G. Meier, B. Krüger, A. Drews, R. Eiselt, L. Bocklage, S. Bohlens, T. Tylliszczak, A. Vansteenkiste, B. Van Waeyenberge, K. W. Chou, A. Puzic, and H. Stoll, *Phys. Rev. Lett.* **100**, 176601 (2008).
- [26] A. A. Thiele, *Phys. Rev. Lett.* **30**, 230 (1973).
- [27] D. L. Huber, *Phys. Rev. B* **26**, 3758 (1982).
- [28] J. Shibata, Y. Nakatani, G. Tatara, H. Kohno, and Y. Otani, *Phys. Rev. B* **73**, 020403 (2006).
- [29] K. Y. Guslienko, X. F. Han, D. J. Keavney, R. Divan, and S. D. Bader, *Phys. Rev. Lett.* **96**, 067205 (2006).
- [30] R. Moriya, L. Thomas, M. Hayashi, Y. B. Bazaliy, C. Rettner, and S. S. P. Parkin, *Nat. Phys.* **4**, 368 (2008).
- [31] K. S. Buchanan, P. E. Roy, F. Y. Fradin, K. Y. Guslienko, M. Grimsditch, S. D. Bader, and V. Novosad, *J. Appl. Phys.* **99**, 08C707 (2006).
- [32] Supplementary Materials.

- [33] L. Heyne and M. Kläui, *J. Appl. Phys.* **109**, 07C908 (2011).
- [34] B. Krüger, M. Najafi, S. Bohlens, R. Frömter, D. P. F. Möller, and D. Pfannkuche, *Phys. Rev. Lett.* **104**, 077201 (2010).
- [35] G. Tatara, H. Kohno, J. Shibata, Y. Lemaho, and K.-J. Lee, *J. Phys. Soc. Jpn.* **76**, 054707 (2007).
- [36] J. Xiao, A. Zangwill, and M. D. Stiles, *Phys. Rev. B* **73**, 054428 (2006).
- [37] K.-J. Lee, M. Stiles, H.-W. Lee, J.-H. Moon, K.-W. Kim, and S.-W. Lee, *Phys. Rep.* **531**, 89 (2013).
- [38] C. A. Akosa, W.-S. Kim, A. Bisig, M. Kläui, K.-J. Lee, and A. Manchon, *Phys. Rev. B* **91**, 094411 (2015).
- [39] A. Manchon and K.-J. Lee, *Appl. Phys. Lett.* **99**, 022504 (2011).
- [40] N. Nagaosa, J. Sinova, S. Onoda, A. H. MacDonald, and N. P. Ong, *Rev. Mod. Phys.* **82**, 1539 (2010).
- [41] S. E. Barnes and S. Maekawa, *Phys. Rev. Lett.* **98**, 246601 (2007).
- [42] Y. Tserkovnyak and M. Mecklenburg, *Phys. Rev. B* **77**, 134407 (2008).
- [43] S. Zhang and S. S.-L. Zhang, *Phys. Rev. Lett.* **102**, 086601 (2009).
- [44] A. Neubauer, C. Pfleiderer, B. Binz, A. Rosch, R. Ritz, P. G. Niklowitz, and P. Böni, *Phys. Rev. Lett.* **102**, 186602 (2009).
- [45] N. A. Usov and S. E. Peschany, *Journal of Magnetism and Magnetic Materials* **118**, L290 (1993).