

This is the accepted manuscript made available via CHORUS. The article has been published as:

Drag force on spherical particles trapped at a liquid interface

Zhi Zhou, Petia M. Vlahovska, and Michael J. Miksis

Phys. Rev. Fluids **7**, 124001 — Published 8 December 2022

DOI: [10.1103/PhysRevFluids.7.124001](https://doi.org/10.1103/PhysRevFluids.7.124001)

Drag force on spherical particles trapped at a liquid interface

Zhi Zhou, Petia M. Vlahovska,^{*} and Michael J. Miksis[†]

Department of Engineering Sciences and Applied Mathematics,

Northwestern University

Evanston, IL 60208

(Dated: November 17, 2022)

Abstract

The dynamics of particles attached to an interface separating two immiscible fluids are encountered in a wide variety of applications. Here we present a combined asymptotic and numerical investigation of the fluid motion past spherical particles attached to a deformable interface undergoing uniform creeping flows in the limit of small Capillary number and small deviation of the contact angle from 90° . Under the assumption of a constant three-phase contact angle, we calculate the interfacial deformation around an isolated particle and a particle pair. Applying the Lorentz reciprocal theorem to the zeroth-order approximation corresponding to spherical particles at a flat interface and the first correction in Capillary number and correction contact angle allows us to obtain explicit analytical expressions for the hydrodynamic drag in terms of the zeroth-order approximations and the correction deformations. The drag coefficients are computed as a function of the three-phase contact angle, the viscosity ratio of the two fluids, the Bond number, and the separation distance between the particles. In addition, the capillary force acting on the particles due to the interfacial deformation is calculated.

I. INTRODUCTION

The problem of particles attached to an interface between two immiscible fluids has been extensively studied for many decades and has a wide variety of engineering and medical applications, such as the formations of Pickering emulsions and particle monolayers. There exists a number of excellent texts and review articles focused on this topic [1–3]. The simplest problem that has been studied consists of a single rigid sphere translating along a flat fluid interface between two immiscible fluids at low Reynolds number. Having a better estimate of the drag on this particle would have an impact on many applications such as modeling the collective motion of particles on a drop in an applied electric field [4]. The hydrodynamic drag force exerted on a sphere can be written as $F_D = -6\pi\mu_1 a U f(\mu_2/\mu_1, b/a, \Delta\rho)$, where f is a dimensionless drag coefficient, a is the radius of the sphere, b is the immersion depth into the upper fluid, U is the translational velocity, and μ_1 and μ_2 are the viscosities of the two fluid phases (see Fig. 1(a) for a sketch of the problem). For the simple case of a

* petia.vlahovska@northwestern.edu

† miksis@northwestern.edu

homogeneous fluid, $f = 1$. A variety of experimental and theoretical studies have obtained the drag coefficient in terms of the immersion depth and the viscosity ratio. The analytical solution for the drag force acting on two fused spheres obtained by Zabarakin [5] provides the solution for a translating sphere at a flat gas/liquid interface with immersion depth b and for $0 < \theta < \pi/2$ [6, 7]. The calculation was extended by Dörr et al. [7] to cover the full range of contact angles. Dani et al. [6] and Dörr et al. [7] assumed that the three-phase contact line (TCL) is pinned to the particle surface, which prevents particle rotation. Dörr and Hardt [8] considered particle rotation in their problem by allowing it to rotate until the hydrodynamic torque and the torque caused by the interfacial tension are balanced, and the steady-state interfacial deformation was calculated [8].

Numerical calculations of the drag coefficient f were carried out by [9–12]. Danov et al. and Das et al. obtained the drag force acting on a sphere straddling a flat gas-liquid interface [9, 10] and a spherical interface at an arbitrary viscosity ratio [11]. Pozrikidis [12] solved the problem of a spherical particle at an interface in the presence of a simple shear flow. As the immersion depth into the liquid phase increases, the drag coefficient f is found to increase monotonically. A more recent numerical study by Loudet et al. [13] calculated the two-dimensional drag on a circular cylinder straddling a deformable fluid interface at an arbitrary viscosity using a phase-field model. Instead of pinning the TCL, the three-phase contact angle was prescribed. Hemaier et al. [14] further extended Loudet et al. [13]’s work by including particle rotation.

The pair interaction of particles at low Reynolds number in a homogeneous fluid has been well addressed in the literature. For particles attached to a fluid interface, capillary interactions arise from the interfacial deformation around them [15, 16]. Dörr and Hardt [8] examined the capillary interaction between two particles via the linear superposition of the single-particle interfacial deformation, assuming a large particle separation. The capillary interaction between two mutually approaching particles was studied by Dani et al. [6], where the viscous drag due to the mutual approach is approximated by multiplying the single-particle drag by the mobility function, which accounts for the increased hydrodynamic resistance as the particles travel closer to each other.

In this work, we wish to further understand the influence of interfacial deformations on the drag force acting on particles at an interface. The problem is in general complex because of the coupling of fluid flow, interfacial deformation and contact line dynamics. Hence a fully

numerical approach would be complex. Here we developed an asymptotic solution approach which allows for a direct and straightforward examination of the impact of the physical parameters on the flow. It has been noted in the literature [2] that uniform flow past a sphere can represent flow past a sphere at an interface in the limit of small Capillary number. This solution is valid for arbitrary viscosity ratio of upper and lower fluids as long as the interface intersects the particle at its equator at 90° . This observation allows for an estimate of the Stokes drag where the viscosity is the average of the two phases. Here we use this result as the leading order solution in a perturbation analysis for small Ca and small deviation of the contact angle from 90° . We obtain the analytical solution for the interfacial deformation around a single particle. In the two-particle deformation case, a straightforward numerical solution approach is developed. We apply the Lorentz reciprocal theorem to the zeroth-order approximations for a spherical particle at a flat interface and the first corrections to obtain explicit analytical expressions for the hydrodynamic drag. We compute the drag force as a function of the three-phase contact angle, the viscosity ratio between the two fluids, the separation distance between the particles, and the Bond number (a dimensionless number that measures the relative importance of gravity and surface tension forces). The limit of large Bond number and large separation distance is also examined.

II. FLUID MOTION PAST A SINGLE PARTICLE

Consider the uniform creeping flow past a fixed spherical particle of radius a located approximately midway at an interface between two viscous fluids. The lower fluid phase is denoted by $i = 1$ and the upper fluid phase by $i = 2$ (see Fig. 1(a)). The fluid viscosities and densities are denoted by μ_i and ρ_i , respectively. We assume the fluid interface is deformable and the deformation remains small, which requires that the surface tension forces are large relative to the viscous forces, i.e., the Capillary number, $\text{Ca} = \mu_1 U / \gamma$, is small. Here, U is the absolute value of the uniform background flow velocity, and γ is the interfacial tension. At the TCL, we enforce a constant contact angle θ_s on the particle surface, where the assumption of small interfacial deformation requires θ_s to be close to 90° . Note that if the top and bottom fluids were the same and $\theta_s = 90^\circ$, this would represent uniform flow past a sphere in a homogeneous flow with its TCL located at the equator of the sphere. In addition, we allow for the particle to be displaced vertically and set $\mathbf{x}_P = b\hat{\mathbf{e}}_z$ as the position

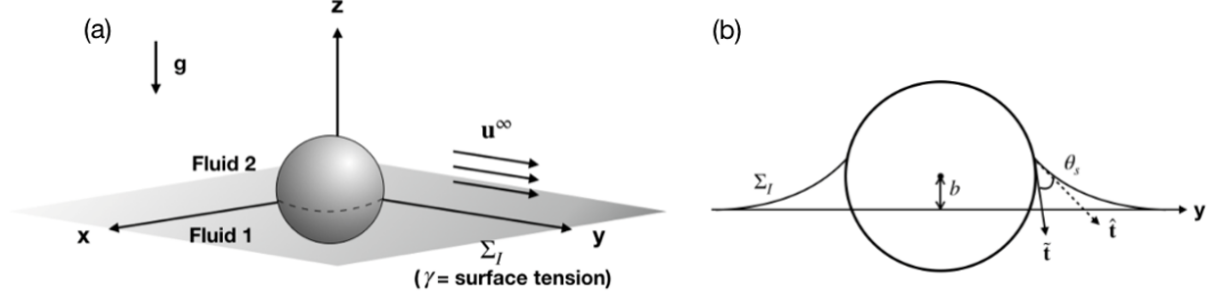


FIG. 1. Illustrations of (a) a spherical particle on an flat interface between two immiscible viscous fluids and (b) the cross-section view of a spherical particle at a deformable interface with contact angle θ_s and immersion depth b .

of the particle's center of mass. Particle rotation is ignored.

The motion of the fluids is governed by the Stokes equations:

$$-\nabla p^i + \lambda_i \nabla^2 \mathbf{u}^i = \mathbf{0} \quad \text{in fluid } i, \quad (1)$$

$$\nabla \cdot \mathbf{u}^i = 0 \quad \text{in fluid } i, \quad (2)$$

where p^i , \mathbf{u}^i , and λ_i are the respective pressure, velocity, and viscosity in fluid phase i ($i = 1, 2$), where $\lambda_1 = 1$ and $\lambda_2 = \lambda = \mu_2/\mu_1$. All variables are made dimensionless using the characteristic unit of length a , the characteristic unit of velocity U , the characteristic unit of pressure $\mu_1 U/a$, and the viscosity in fluid 1, μ_1 .

Let Σ_{P_i} denote the particle surface immersed in fluid i , and $\Sigma_I = \{(x, y, z) | F_s(x, y, z) = z - h(x, y) = 0\}$ denote the fluid interface. Along the fluid interface Σ_I , the normal velocity vanishes, the tangential velocity and shear stress are continuous, and the normal stress is discontinuous, i.e.,

$$\mathbf{u}^i \cdot \hat{\mathbf{n}} = 0, \quad (3)$$

$$\hat{\mathbf{t}} \cdot (\mathbf{u}^2 - \mathbf{u}^1) = 0, \quad (4)$$

$$\hat{\mathbf{t}} \cdot (\boldsymbol{\sigma}^2 - \boldsymbol{\sigma}^1) \cdot \hat{\mathbf{n}} = 0, \quad (5)$$

$$(\boldsymbol{\sigma}^2 - \boldsymbol{\sigma}^1) \cdot \hat{\mathbf{n}} = \frac{1}{\text{Ca}} (\nabla \cdot \hat{\mathbf{n}}) \hat{\mathbf{n}} + \frac{\text{Bo}}{\text{Ca}} h \hat{\mathbf{n}}, \quad (6)$$

where $\boldsymbol{\sigma}^i = -p\mathbf{I} + \lambda_i (\nabla \mathbf{u}^i + (\nabla \mathbf{u}^i)^T)$ is the stress tensor, $\hat{\mathbf{n}}$ and $\hat{\mathbf{t}}$ are the unit normal and tangential vectors, respectively, to the fluid interface Σ_I . The Capillary number, Ca , and

the Bond number, Bo , are dimensionless parameters defined as

$$\text{Ca} = \frac{\mu_1 U}{\gamma} \quad \text{and} \quad \text{Bo} = \frac{(\rho_1 - \rho_2) g a^2}{\gamma},$$

where g is the acceleration of gravity. At the particle surface Σ_{P_i} , we impose the no-slip and no-penetration conditions:

$$\tilde{\mathbf{n}} \cdot \mathbf{u}^i = 0, \tag{7}$$

$$\tilde{\mathbf{t}} \cdot \mathbf{u}^i = 0, \tag{8}$$

where $\tilde{\mathbf{n}}$ and $\tilde{\mathbf{t}}$ denote the unit normal and tangential vectors, respectively, to the particle surface Σ_{P_i} . Far from the particle, the velocity field approaches the uniform background flow:

$$\mathbf{u}^i \rightarrow \mathbf{u}^\infty = \hat{\mathbf{e}}_y, \tag{9}$$

At the TCL, we define the contact angle θ_s to be the angle between the tangent to the particle surface Σ_{P_i} and the tangent to the interface Σ_I , both in the plane containing the normal to the TCL, which is illustrated in Fig. 1(b). The constant contact angle condition is given by

$$\tilde{\mathbf{n}} \cdot \hat{\mathbf{n}} = \cos \theta_s. \tag{10}$$

A. Asymptotic expansions

Assume

$$\text{Ca} \ll 1, \quad \theta_s = \pi/2 + \delta \tilde{\theta}_s, \quad \text{with } \delta \ll 1, \quad \tilde{\theta}_s = \mathcal{O}(1), \quad \text{and } \text{Bo} = \mathcal{O}(1),$$

where δ is the small parameter that describes the scale of the contact angle's deviation from 90° . We consider the following two-parameter asymptotic expansion for any quantity f :

$$f = f^{(0,0)} + \text{Ca} f^{(1,0)} + \delta f^{(0,1)} + \dots, \quad (11)$$

and for convenience, we omit the superscript i when referring to quantities in both fluids. Although we will only consider the leading order behaviors, we introduce an expansion in Ca and δ so that the origin of the resulting forces is clear. Here $\mathbf{u}^{(0,0)}$ is given by

$$\mathbf{u}^{(0,0)} = \frac{1}{4\rho^5} \left(-3xy(\rho^2 - 1)\hat{\mathbf{e}}_x + (-3y^2(\rho^2 - 1) + (\rho - 1)(4\rho^2 + \rho + 1)\rho^2)\hat{\mathbf{e}}_y - 3yz(\rho^2 - 1)\hat{\mathbf{e}}_z \right), \quad (12)$$

and, to within an arbitrary additive constant,

$$p^{(0,0)} = \begin{cases} -\lambda 3y/(2\rho^3) & z > 0 \\ -3y/(2\rho^3) & z < 0 \end{cases}, \quad (13)$$

where $\rho = \sqrt{x^2 + y^2 + z^2}$ ([17]). Note that the velocity (12) satisfies the no-slip conditions (7) and (8), the far field condition (9), and the velocity conditions (3) and (4). The tangential stress along $z = 0$ is zero so Eq. (5) is satisfied. The normal stress condition at leading order is not identically satisfied except for $\lambda = 1$ and in the limit of a flat interface.

The normal stress condition is not identically satisfied except in the $\text{Ca} \rightarrow 0$ limit of a flat interface.

The effect of a particle density is to raise or lower the center of mass of the particle. This can be accounted for by perturbing the particle position from the origin, i.e.,

$$\mathbf{x}_P = \delta \tilde{b} \hat{\mathbf{e}}_z. \quad (14)$$

The actual impact of a specific particle density can then be predicted afterwards by a balance of vertical forces. For simplicity, we scale the immersion depth b as $\delta \tilde{b}$ and assume the effect of the background flow on the particle position is accounted for by the value \tilde{b} . The interface

shape h is perturbed from the flat interface, i.e.,

$$h = \text{Ca} h^{(1,0)} + \delta h^{(0,1)} + \dots, \quad (15)$$

where $\text{Ca} h^{(1,0)}$ describes the interfacial deformation induced by the background flow \mathbf{u}^∞ , and $\delta h^{(0,1)}$ is the static deformation induced by the contact angle, which describes the equilibrium interface shape in the absence of flow. Note that for the two-parameter asymptotic solutions to be valid, we require $\delta > \text{Ca}^2$ and $\delta^2 < \text{Ca}$, which implies $\delta \sim \text{Ca}^\alpha$ with $\frac{1}{2} < \alpha < 2$. Also note that this separation of scales allows us to independently consider the impacts of immersion depth and capillarity.

Substituting Eqs. (11) - (15) into Eqs. (1) - (2) along with the boundary conditions on the particle surface and the fluid interface,

$$\Sigma_{P_i} = \{(x, y, z) | x^2 + y^2 + (z - \delta \tilde{b})^2 = 1\}, \quad (16)$$

$$\Sigma_I = \{(x, y, z) | z = \text{Ca} h^{(1,0)} + \delta h^{(0,1)}\}, \quad (17)$$

we can now collect terms with similar powers of Ca and δ . This result is discussed below. Additional details can be found in [18].

B. Interfacial deformations

To parametrize the interface shape Σ_I up to orders Ca and δ , we introduce cylindrical coordinates (r, ϕ, z) . The relation between Cartesian and cylindrical coordinates are

$$x = r \cos \phi, \quad y = r \sin \phi.$$

The $\mathcal{O}(\text{Ca})$ interface shape $h^{(1,0)}$ accounts for the deformation caused by the background flow and satisfies the stress balance equation

$$\nabla^2 h^{(1,0)} - \text{Bo} h^{(1,0)} = -\hat{\mathbf{e}}_z \cdot [\boldsymbol{\sigma}^{(0,0)}] \cdot \hat{\mathbf{e}}_z, \quad (18)$$

and the boundary conditions

$$0 = -r \frac{\partial h^{(1,0)}}{\partial r} + h^{(1,0)} \quad \text{at } r = 1, \quad (19)$$

$$h^{(1,0)} \rightarrow 0 \quad \text{as } r \rightarrow \infty. \quad (20)$$

The $\mathcal{O}(\delta)$ interface shape $h^{(0,1)}$ accounts for the deformation in the absence of the flow, and it satisfies the stress balance equation

$$\nabla^2 h^{(0,1)} - \text{Bo} h^{(0,1)} = 0, \quad (21)$$

and the boundary conditions

$$-\tilde{\theta}_s + \tilde{b} = -r \frac{\partial h^{(0,1)}}{\partial r} + h^{(0,1)} \quad \text{at } r = 1, \quad (22)$$

$$h^{(0,1)} \rightarrow 0 \quad \text{as } r \rightarrow \infty. \quad (23)$$

The RHS of Eq. (18) can be computed from the leading order solutions (12) and (13), and is given by

$$-\hat{\mathbf{e}}_z \cdot [\boldsymbol{\sigma}^{(0,0)}] \cdot \hat{\mathbf{e}}_z = -(\sigma_{zz}^{2(0,0)} - \sigma_{zz}^{1(0,0)}) = (1 - \lambda) \frac{3y}{2(x^2 + y^2)^{5/2}} = (1 - \lambda) \frac{3}{2r^4} \sin \phi. \quad (24)$$

To solve for $h^{(1,0)}$, we assume the solution form $h^{(1,0)} = R_P(r) \sin \phi$, then Eq. (18) can be reduced to a non-homogeneous Bessel's equation in $R_P(r)$, i.e.,

$$r^2 R_P'' + r R_P' - (1 + \text{Bo} r^2) R_P = (1 - \lambda) \frac{2}{3r^2}. \quad (25)$$

Using the method of variation of parameters plus the boundary condition (20), the solution R_P is obtained. Finally the boundary condition (19) is applied and we find that

$$h^{(1,0)}(r, \phi) = (1 - \lambda) \left[C_1 K_1(\sqrt{\text{Bo} r}) - \frac{3}{2} K_1(\sqrt{\text{Bo} r}) \int_1^r \frac{1}{r^3} I_1(\sqrt{\text{Bo} r}) \, dr \right. \\ \left. - \frac{3}{2} I_1(\sqrt{\text{Bo} r}) \int_r^\infty \frac{1}{r^3} K_1(\sqrt{\text{Bo} r}) \, dr \right] \sin \phi, \quad (26)$$

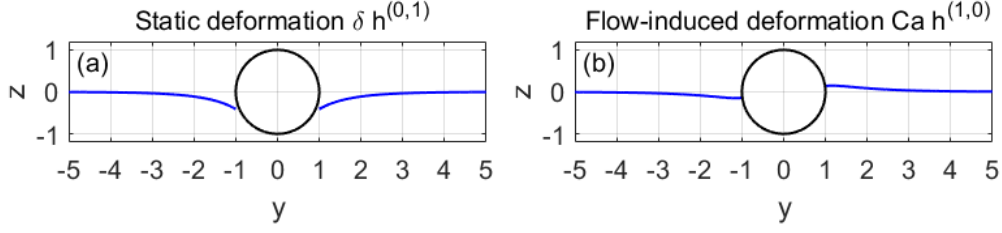


FIG. 2. The y - z cross-section views of the static deformation $\delta h^{(0,1)}$ (a) and the flow-induced deformation $Ca h^{(1,0)}$ (b) with $Ca = \delta = \tilde{\theta}_s = 1$, $Bo = 1$, $\lambda = 2$, and $\tilde{\theta}_s = 1, \tilde{b} = 0$.

where

$$C_1 = -\frac{3MI_2(\sqrt{Bo})}{2K_2(\sqrt{Bo})}, \quad M = \int_1^\infty \frac{1}{r^3} K_1(\sqrt{Bo}r) dr$$

The solution of (21) with boundary conditions (22) and (23) is

$$h^{(0,1)} = \frac{(-\tilde{\theta}_s + \tilde{b})K_0(\sqrt{Bo}r)}{\sqrt{Bo}K_1(\sqrt{Bo}) + K_0(\sqrt{Bo})} = (-\tilde{\theta}_s + \tilde{b})C_0K_0(\sqrt{Bo}r). \quad (27)$$

Here, K_n and I_n are the modified Bessel functions of order n . The leading order interfacial deformation is the sum $h = Ca h^{(1,0)} + \delta h^{(0,1)}$.

Fig. 2 shows the y - z cross-sections of the static deformation $\delta h^{(0,1)}$ and flow-induced deformation $Ca h^{(1,0)}$ with $Ca = \delta = \tilde{\theta}_s = 1$, $Bo = 1$, $\lambda = 2$, and $\tilde{b} = 0$. The static deformation $\delta h^{(0,1)}$, induced by the contact angle, describes the equilibrium interface shape in the absence of flow and is axisymmetric; the flow-induced deformation $Ca h^{(1,0)}$ represents the deformation caused by the uniform background flow $\mathbf{u}^\infty = \hat{\mathbf{e}}_y$ and appears anti-symmetric in the y direction. Note that $h^{(0,1)}$ is independent of ϕ and $h^{(1,0)}$ depends on ϕ as $\sin \phi$.

In Fig. 3, we plot the y - z cross-sections of $h = Ca h^{(1,0)} + \delta h^{(0,1)}$ with $Ca = \delta = 1$ and varying values of Bo , from which we see that the amplitude of the deformation decreases as Bo increases, meaning increasing the density mismatch between the two fluid phases flattens the interface shape. Note that in the limit of small Bond number ($Bo \rightarrow 0$), the asymptotic assumption $Bo = \mathcal{O}(1)$ is violated and the deformation solutions become invalid. Also, the values of the parameters chosen in Fig. 3 are outside the limits of applicability of our expansions and are chosen to illustrate how the interface is affected by them. Because of this, and since we ignore higher-order terms in the expansions, we observe a mismatch

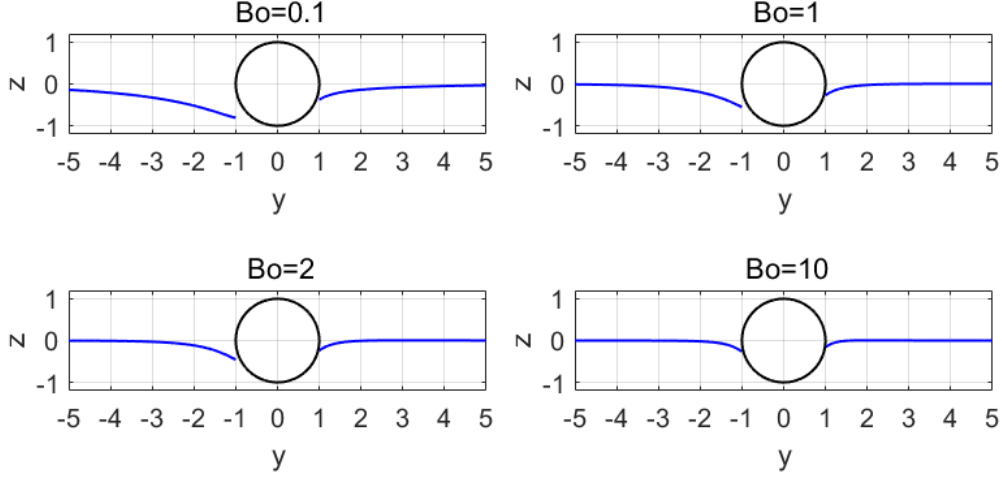


FIG. 3. The y - z cross-section views of the interfacial deformation $h = \text{Ca}h^{(1,0)} + \delta h^{(0,1)}$ with $\text{Ca} = \delta = \tilde{\theta}_s = 1$, $\lambda = 2$, and varying values of Bo .

between the fluid interface and the particle surface.

C. Calculation of the drag force

The drag force exerted on a spherical particle straddling a fluid interface is

$$F_D = \mathbf{F}_D \cdot (-\hat{\mathbf{e}}_y) = \mathbf{F}_D \cdot (-\mathbf{u}^\infty) = \sum_{i=1,2} \iint_{\Sigma_{P_i}} \boldsymbol{\sigma} \cdot \tilde{\mathbf{n}} \cdot \mathbf{u}^\infty \, d\Sigma. \quad (28)$$

Inserting the expansions of $\boldsymbol{\sigma}$ and h into Eq. (28), we obtain to $\mathcal{O}(\text{Ca})$ and $\mathcal{O}(\delta)$

$$\begin{aligned} F_D = & \int_0^{2\pi} \left(\int_0^{1+\delta b^{(1)}} (\boldsymbol{\sigma}^{2(0,0)} + \text{Ca}\boldsymbol{\sigma}^{2(1,0)} + \delta\boldsymbol{\sigma}^{2(0,1)}) \cdot (\tilde{\mathbf{n}}^{(0,0)} + \delta\tilde{\mathbf{n}}^{(1,0)}) \cdot \mathbf{u}^\infty \, dz \, d\phi \right. \\ & + \int_{-1+\delta b^{(1)}}^0 (\boldsymbol{\sigma}^{1(0,0)} + \text{Ca}\boldsymbol{\sigma}^{1(1,0)} + \delta\boldsymbol{\sigma}^{1(0,1)}) \cdot (\tilde{\mathbf{n}}^{(0,0)} + \delta\tilde{\mathbf{n}}^{(1,0)}) \cdot \mathbf{u}^\infty \, dz \, d\phi \Big) \\ & - \int_0^{2\pi} (\text{Ca}h^{(1,0)} + \delta h^{(0,1)}) [\boldsymbol{\sigma}^{(0,0)}] \cdot (\tilde{\mathbf{n}}^{(0,0)} + \delta\tilde{\mathbf{n}}^{(1,0)}) \cdot \mathbf{u}^\infty \, d\phi. \end{aligned} \quad (29)$$

To evaluate the surface integrals in Eq. (29), we introduce spherical coordinates $(\rho, \vartheta, \varphi)$, defined by

$$x = \rho \sin \varphi \sin \vartheta, \quad y = \rho \cos \vartheta, \quad z = \rho \cos \varphi \sin \vartheta, \quad (30)$$

where $0 \leq \vartheta \leq \pi$ and $0 \leq \varphi < 2\pi$.

The spherical surface can be described as

$$\Sigma_P = \{(\rho, \varphi, \vartheta) | \rho = 1 + \delta\phi^{(1)}(\varphi, \vartheta)\}, \quad (31)$$

where $\phi^{(1)} = \tilde{b} \sin \vartheta \cos \varphi$, and the unit normal vector $\tilde{\mathbf{n}}$ to the particle surface is $\tilde{\mathbf{n}} = \tilde{\mathbf{n}}^{(0,0)} + \delta\tilde{\mathbf{n}}^{(0,1)}$ with

$$\tilde{\mathbf{n}}^{(0,0)} = \hat{\mathbf{e}}_\rho, \quad \tilde{\mathbf{n}}^{(0,1)} = -\tilde{b} \cos \vartheta \cos \varphi / \rho \hat{\mathbf{e}}_\vartheta + \tilde{b} \sin \varphi / \rho \hat{\mathbf{e}}_\varphi. \quad (32)$$

Substituting in the leading order solutions for flow past a sphere given by Eqs. (12) and (13), we find that the $\mathcal{O}(1)$ drag force is the classical result [2]:

$$F_D^{(0,0)} = 3\pi(\lambda + 1). \quad (33)$$

The formula of the $\mathcal{O}(\text{Ca})$ and $\mathcal{O}(\delta)$ drag forces are given by

$$F_D^{(j,k)} = \underbrace{\sum_{i=1,2} \iint_{\Sigma_{P_i}^{(0)}} \boldsymbol{\sigma}^{(j,k)} \cdot \tilde{\mathbf{n}}^{(0,0)} \cdot \mathbf{u}^\infty \, d\Sigma}_{\textcircled{1}} - \underbrace{\int_0^{2\pi} h^{(j,k)}[\boldsymbol{\sigma}^{(0,0)}] \cdot \tilde{\mathbf{n}}^{(0,0)} \cdot \mathbf{u}^\infty \, d\phi}_{\textcircled{2}}, \quad (34)$$

with $(j, k) = (1, 0)$ and $(0, 1)$, where $F_D^{(1,0)}$ is the flow-induced correction drag and $F_D^{(0,1)}$ is the contact angle induced correction drag. The integral $\textcircled{2}$ in Eq. (34) can be evaluated directly with $\textcircled{2} = 0$ for $(j, k) = (1, 0)$ and $\textcircled{2} = -3\pi(\lambda - 1)(-\tilde{\theta}_s + \tilde{b})C_0K_0(\sqrt{\text{Bo}})$ for $(j, k) = (0, 1)$, where C_0 is defined in Eq (27). The integral in $\textcircled{1}$ containing the correction stress still needs to be evaluated.

1. Lorentz reciprocal theorem

We use the Lorentz reciprocal theorem to evaluate the term $\textcircled{1}$ in the $\mathcal{O}(\text{Ca})$ and $\mathcal{O}(\delta)$ drag formula (34). Let D_i denote the region bounded by the particle surface $\Sigma_{P_i}^{(0)}$, the flat interface $\Sigma_I^{(0)}$, and the hemi-spherical surface Σ_{∞_i} at infinity (see Fig. 4). Let us define $\Sigma_\infty = \Sigma_{\infty_1} \cup \Sigma_{\infty_2}$. We apply the Lorentz reciprocal theorem to the following two flow problems:

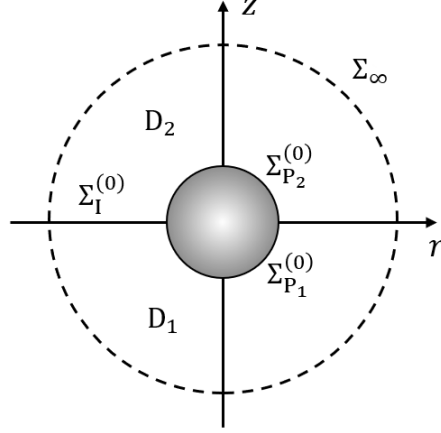


FIG. 4. Geometry for the Lorentz reciprocal theorem.

Problem 1: The first problem is constructed by setting Ca and δ to zero, which describes a sphere bisected by a flat interface in a uniform flow. The flow field and the stress tensor are denoted by $\mathbf{u}^{(0,0)}$ and $\boldsymbol{\sigma}^{(0,0)}$, respectively. We let $\mathbf{u}_D^{(0,0)} = \mathbf{u}^{(0,0)} - \mathbf{u}^\infty$ denote the leading order disturbance field. Then, at the boundaries,

$$\mathbf{u}_D^{(0,0)} = -\mathbf{u}^\infty \quad \text{for } \mathbf{x} \in \Sigma_{P_i}^{(0)}, \quad (35)$$

$$\mathbf{u}_D^{(0,0)} = \mathbf{0} \quad \text{for } \mathbf{x} \in \Sigma_\infty. \quad (36)$$

Problem 2: The second problem is described by the truncated asymptotic expansions in Ca and δ :

$$\mathbf{u}_D = \mathbf{u}_D^{(0,0)} + \text{Ca} \mathbf{u}_D^{(1,0)} + \delta \mathbf{u}_D^{(0,1)}, \quad (37)$$

$$\boldsymbol{\sigma} = \boldsymbol{\sigma}^{(0,0)} + \text{Ca} \boldsymbol{\sigma}^{(1,0)} + \delta \boldsymbol{\sigma}^{(0,1)}, \quad (38)$$

where \mathbf{u}_D denotes the disturbance field. For $\mathbf{x} \in \Sigma_\infty$,

$$\mathbf{u}_D = 0, \quad (39)$$

for $\mathbf{x} \in \Sigma_{P_i}^{(0)}$,

$$\mathbf{u}_D^{(1,0)} = -\mathbf{u}^\infty, \quad \mathbf{u}_D^{(1,0)} = \mathbf{0}, \quad \mathbf{u}_D^{(0,1)} = -\tilde{b} \frac{\partial \mathbf{u}_D^{(0,0)}}{\partial z}, \quad (40)$$

and for $\mathbf{x} \in \Sigma_I^{(0)}$,

$$\mathbf{u}_D^{(0,0)} \cdot \hat{\mathbf{e}}_z = 0, \quad (41)$$

$$\mathbf{u}_D^{(1,0)} \cdot \hat{\mathbf{e}}_z = -\mathbf{u}_D^{(0,0)} \cdot \hat{\mathbf{n}}^{(1)} - \frac{\partial \mathbf{u}_D^{(0,0)}}{\partial z} h^{(1,0)} \cdot \hat{\mathbf{e}}_z, \quad (42)$$

$$\hat{\mathbf{t}}^{(0,0)} \cdot [\boldsymbol{\sigma}^{(1,0)}] \cdot \hat{\mathbf{e}}_z = -\hat{\mathbf{t}}^{(0)} \cdot \frac{\partial [\boldsymbol{\sigma}^{(0,0)}]}{\partial z} h^{(1,0)} \cdot \hat{\mathbf{e}}_z - \hat{\mathbf{t}}^{(0,0)} \cdot [\boldsymbol{\sigma}^{(0,0)}] \cdot \hat{\mathbf{n}}^{(1,0)} - \hat{\mathbf{t}}^{(1,0)} \cdot [\boldsymbol{\sigma}^{(0,0)}] \cdot \hat{\mathbf{e}}_z, \quad (43)$$

and similarly for $\mathbf{u}^{(0,1)} \cdot \hat{\mathbf{e}}_z$ and $\hat{\mathbf{t}}^{(0,0)} \cdot [\boldsymbol{\sigma}^{(0,1)}] \cdot \hat{\mathbf{e}}_z$.

Since solutions $(\mathbf{u}_D^{(0,0)}, \boldsymbol{\sigma}^{(0,0)})$ and $(\mathbf{u}_D, \boldsymbol{\sigma})$ are defined in the same geometry, they are related by the reciprocal theorem

$$\iint_{\Sigma_i} (\boldsymbol{\sigma}^{(0,0)} \cdot \mathbf{n}) \cdot \mathbf{u}_D \, d\Sigma = \iint_{\Sigma_i} (\boldsymbol{\sigma} \cdot \mathbf{n}) \cdot \mathbf{u}_D^{(0,0)} \, d\Sigma, \quad i = 1, 2, \quad (44)$$

where $\Sigma_i = \partial D_i = \Sigma_{P_i}^{(0)} \cup \Sigma_{I_i}^{(0)} \cup \Sigma_{\infty_i}$, and \mathbf{n} denote the outward normal of Σ_i . The contribution from the far-field integral vanishes, since

$$\|\mathbf{u}_D^{(0,0)}\| \sim |\mathbf{x}|^{-1}, \quad \|\mathbf{u}_D\| \sim |\mathbf{x}|^{-1}, \quad \|\boldsymbol{\sigma}^{(0,0)} \cdot \mathbf{n}\| \sim |\mathbf{x}|^{-2}, \quad \text{and} \quad \|\boldsymbol{\sigma} \cdot \mathbf{n}\| \sim |\mathbf{x}|^{-2}. \quad (45)$$

Collecting coefficients of Ca and δ in Eq. (44), we are able to express terms ① in Eq. (34) in terms of integrals over the flat interface $\Sigma_I^{(0)}$, i.e.,

$$\textcircled{1} = \iint_{\Sigma_I^{(0)}} [\boldsymbol{\sigma}^{(0,0)}] \cdot (-\hat{\mathbf{e}}_z) \cdot \mathbf{u}_D^{(1,0)} \, d\Sigma - \iint_{\Sigma_I^{(0,0)}} [\boldsymbol{\sigma}^{(1,0)}] \cdot (-\hat{\mathbf{e}}_z) \cdot \mathbf{u}_D^{(0,0)} \, d\Sigma, \quad (46)$$

for the $\mathcal{O}(\text{Ca})$ drag $F_D^{(1,0)}$, and

$$\begin{aligned} \textcircled{1} = & \iint_{\Sigma_I^{(0)}} [\boldsymbol{\sigma}^{(0,0)}] \cdot (-\hat{\mathbf{e}}_z) \cdot \mathbf{u}_D^{(0,1)} \, d\Sigma - \iint_{\Sigma_I^{(0,0)}} [\boldsymbol{\sigma}^{(0,1)}] \cdot (-\hat{\mathbf{e}}_z) \cdot \mathbf{u}_D^{(0,0)} \, d\Sigma \\ & - \sum_{i=1,2} \iint_{\Sigma_{P_i}^{(0)}} \boldsymbol{\sigma}^{(0,0)} \cdot (-\tilde{\mathbf{n}}^{(0,0)}) \cdot \mathbf{u}^{(0,1)} \, d\Sigma \end{aligned} \quad (47)$$

for the $\mathcal{O}(\delta)$ drag $F_D^{(0,1)}$, where the correction velocities and stress jumps are given in the correction boundary conditions (see Appendix A 1)

The additional drag contribution when the particle's center is shifted from the origin is

$$- \sum_{i=1,2} \iint_{\Sigma_{P_i}^{(0)}} \boldsymbol{\sigma}^{(0,0)} \cdot (-\tilde{\mathbf{n}}^{(0,0)}) \cdot \mathbf{u}^{(0,1)} \, d\Sigma = \frac{27}{16} \pi (\lambda - 1) \tilde{b}. \quad (48)$$

The result recovers the correction drag in Eq. (3.17) from [8], where the particle translates along a flat gas-liquid interface ($\lambda = \mu_2/\mu_1 = 0$) with immersion depth $\delta\tilde{b}$. Continuing, we can now calculate the first correction to the drag. Because of the anti-symmetry of the flow field given by Eqs. (A24) - (A26), the flow induced drag $F_D^{(1,0)}$ is zero. Using the symmetry, Eqs. (A20) - (A21), and Eqs. (A24) - (A26), the contact angle induced correction drag $F_D^{(0,1)}$ can be integrated and rewritten as

$$\begin{aligned} F_D^{(0,1)} = & \pi(\lambda - 1) \int_1^\infty \frac{9}{8r^7} \left((r^2 - 1) \left((6r^2 - 4)h^{(0,1)} + 3r(1 - 2r^2) \frac{dh^{(0,1)}}{dr} \right) \right) dr \\ & + \frac{27}{16} \pi (\lambda - 1) \tilde{b} - 3\pi(\lambda - 1)(-\tilde{\theta}_s + \tilde{b})C_0K_0(\sqrt{\text{Bo}}). \end{aligned} \quad (49)$$

Eq. (49) provides an explicit analytical expression for the contact angle induced correction drag in terms of the leading order solutions $p^{(0,0)}$ and $\mathbf{u}^{(0,0)}$ and the correction deformation $h^{(0,1)}$ given in Eq. (27). We are able to evaluate $F_D^{(0,1)}$ by numerically integrating the first term in Eq. (49) using the Trapezoidal rule.

Then, the truncated asymptotic expansion for the total drag (28) to first orders in δ and Ca can be written as

$$F_D = F_D^{(0,0)} + \delta F_D^{(0,1)} = 3\pi(\lambda + 1) + \delta(\lambda - 1) \left((\tilde{\theta}_s - \tilde{b})f^{(1)}(\text{Bo}) + \frac{27}{16}\pi\tilde{b} \right) \quad (50)$$

where $f^{(1)}$, shown in Fig. 5, is the correction drag coefficient in terms of Bo . Recall that

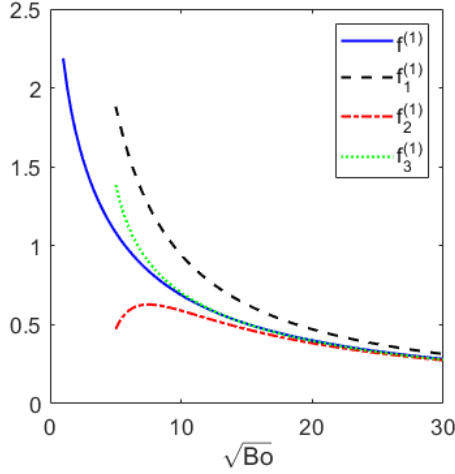


FIG. 5. The drag coefficient $f^{(1)}$ and its approximations $f_n^{(1)}$ for large Bond number plotted as functions of $\sqrt{\text{Bo}}$.

increasing Bo , which represents the density mismatch between the two fluid phases, flattens the interface shape near the particle. Consequently, an increase in Bo (e.g., by increasing the density mismatch) reduces the correction drag force caused by interfacial deformation, as shown in Fig. 5. In the limit of large Bond number, the shape of the static interface $z = \delta h^{(0,1)}$ approaches the flat interface and $f^{(1)}$ approaches zero. The asymptotic behavior of $f^{(1)}$ as $\text{Bo} \rightarrow \infty$ is described by (see [18])

$$f^{(1)} = \frac{3\pi}{\sqrt{\text{Bo}}} - \frac{45\pi}{4\text{Bo}} + \frac{291\pi}{8\text{Bo}^{3/2}} + \mathcal{O}\left(\frac{1}{\text{Bo}^2}\right). \quad (51)$$

We let $f_n^{(1)}$ denote the asymptotic expansion in Eq. (51) truncated after the order $\text{Bo}^{-n/2}$ term with $n = 1, 2$, and 3 , and plot $f_n^{(1)}$ along with the drag coefficient $f^{(1)}$ in Fig. 5. Note that for large values of Bo all approximations converge to Eq.(51) with the most accurate being $f_3^{(1)}$.

We observe in Eq. (50) that the correction drag force at order δ scales linearly with the viscosity difference $(\lambda - 1)$, and hence when the two fluid phases have the same viscosity ($\lambda=1$), the $\mathcal{O}(\delta)$ drag vanishes. This vanishing of the correction drag when $\lambda = 1$ is not expected if higher order terms were included.

In Figs. 6 and 7, we compare the normalized drag

$$F_D^* = \frac{F_D}{3\pi(\lambda + 1)} \quad (52)$$

with the 2D numerical results of Loudet et al. [13]. The drag forces in [13] are calculated with $\text{Ca} \sim 10^{-3} - 10^{-4}$ and $40^\circ < \theta_s < 140^\circ$. In Fig. 6, we plot the normalized drag as a function of viscosity ratio λ in comparison with Loudet et al.'s results for contact angle $\theta_s = 75^\circ$ and $\theta_s = 110^\circ$. We see that the asymptotic solutions are qualitatively consistent with the numerical results in that as the viscosity ratio λ tends to 1, the effect of deformations on the drag force decreases. Quantitative differences are observed. There could be several reasons for this. First, the comparisons are made between a 3D flow in an unbounded Stokes fluid and a 2D Navier-Stokes flow confined between two parallel planes. Second, the values of the contact angles, $\theta_s = 75^\circ$ and $\theta_s = 110^\circ$, violate the assumption of small correction contact angles for the asymptotic expansion. In Fig. 7, we set $\lambda = 0.75$ and compare the predictions. The asymptotic solution predicts the drag dependence on θ_s to first order in δ (linear effects), and [13]'s solution to the full flow problem captures the contact angle's higher-order nonlinear effects on the drag force. Despite the asymptotic model's limitation on contact angles, it allows for straightforward drag force calculations via numerical integration or asymptotically for large Bo compared to the full-scale numerical simulations in [13]. The analytical solution (50) explicitly accounts for the dependence of the drag force on the contact angle, the viscosity ratio of the two fluids, and the Bond number, which provides us with deeper understandings of the interfacial deformation's effects on the hydrodynamic drag. In addition, while [13]'s 2D approach can capture qualitative trends of the flow-particle system, the analytical model's 3D geometry provides a more physically realistic representation of the system.

III. PAIR INTERACTIONS OF PARTICLES

In this section, we consider the steady motion of two spherical particles at a fluid interface under creeping flow conditions, where the background flow is arbitrarily oriented relative to the spheres' line-of-centers. The linearity of the Stokes equations and the boundary conditions allows us to decompose the problem into two sub-problems: uniform flows past

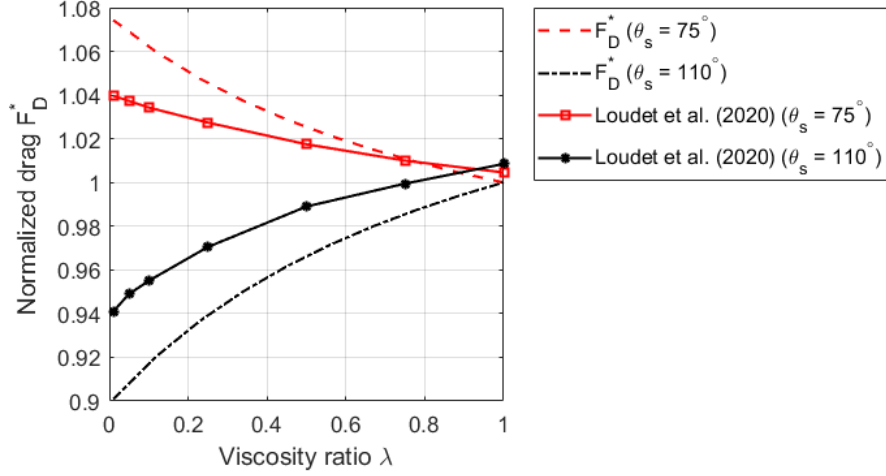


FIG. 6. Comparison of the normalized drag (F_D^* : Eq. (52)) with numerical results from Loudet et al. (2020), for contact angles $\theta_s = 75^\circ$ and 110° , $Bo \approx 0.2$, $\tilde{b} = 0$.

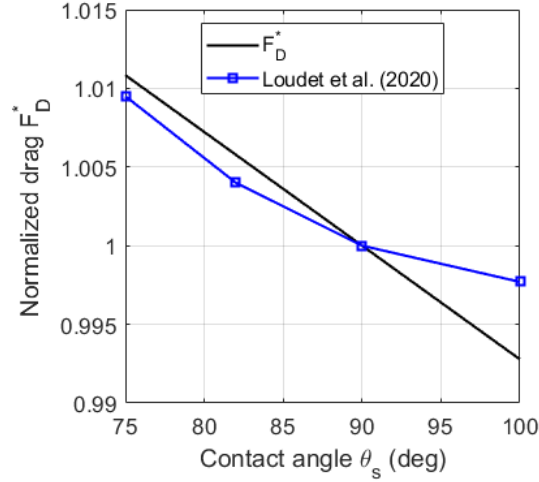


FIG. 7. Comparison of the normalized drag (F_D^* : Eq. (52)) with numerical results from Loudet et al. (2020) for viscosity ratio $\lambda = 0.75$, $Bo \approx 0.2$, and $\tilde{b} = 0$.

two spheres at an interface, where the imposed flow direction is either perpendicular or parallel to the spheres' line-of-centers.

To move forward, we employ the solutions for the motion of two spheres in an unbounded fluid [19, 20]. Stimson and Jeffery [19] solved the problem of two spheres translating with a constant velocity parallel to their line-of-centers. Goldman et al. [20] calculated the terminal setting motion of two arbitrarily oriented spheres by combining Stimson and Jeffery's solutions [19] with the solutions to the side-by-side problem, in which the motion of the

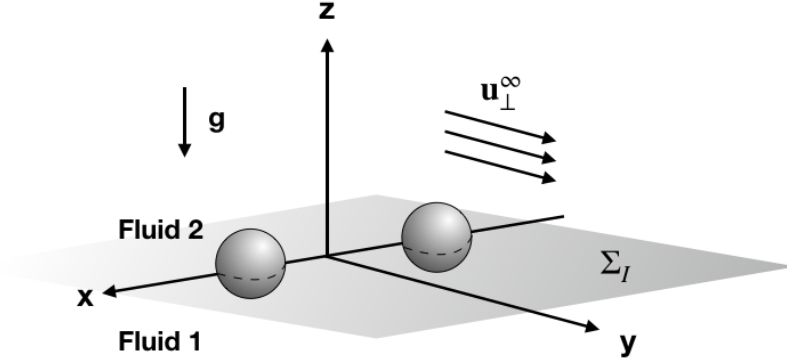


FIG. 8. Illustration of two spherical particles straddling a fluid interface between two immiscible viscous fluids, where the background uniform flow is perpendicular to the line-of-centers of the two particles.

spheres is perpendicular to their line-of-centers.

Using the same approach as for the single-particle problem, we study the influence of interfacial deformations on the drag force acting on the particles, where the solutions obtained by Goldman et al. [20] and Stimson and Jeffery [19] are used to solve the leading order problems.

A. Flow perpendicular to the particles' line-of-centers

1. Problem formulation

Consider two spherical particles of radii a straddling a fluid interface between two viscous fluids with respective viscosities μ_1 and μ_2 in a uniform flow perpendicular to the line-of-centers of the two spheres (see Fig. 8). We assume the two particles have their centers of masses pinned at $-L/2\hat{\mathbf{e}}_x$ and $L/2\hat{\mathbf{e}}_x$, respectively, where L denotes the dimensionless separation distance between the two particles. The nondimensionalized background flow is denoted by $\mathbf{u}_\perp^\infty = \hat{\mathbf{e}}_y$, and we adopt similar notations used in the previous section.

As in section II, we perturb the contact angle θ_s from 90° , i.e., $\theta_s = \pi/2 + \delta\tilde{\theta}_s$. For any nondimensionalized quantity f_\perp , where the subscript “ \perp ” indicates variables in the perpendicular flow problem, we consider the two-parameter asymptotic expansion for Ca and δ :

$$f_\perp = f_\perp^{(0,0)} + \text{Ca}f_\perp^{(1,0)} + \delta f_\perp^{(0,1)} + \dots \quad (53)$$

In this discussion, we do not perturb the height of the center of the sphere. This could be easily included by paralleling the analysis of section II.

The leading order problem describes two spheres at a flat fluid interface in a perpendicular uniform flow. The equivalent problem of two spheres translating at a constant velocity perpendicular to their line-of-centers in a viscous fluid in the absence of an interface is solved by Goldman et al. [20]. The analytical solutions of the pressure and velocity field in [20] are the leading order pressure $p_{\perp}^{(0,0)}$ and velocity field $\mathbf{u}_{\perp}^{(0,0)}$ (see Appendix B 1). As in section II, we modified these solutions to account for the different viscosities of the two fluids.

To better describe the two-sphere geometry, we introduce bicylindrical coordinates (σ, τ, z) . The relations between the Cartesian coordinates and the bicylindrical coordinates are

$$x = \frac{c \sinh \tau}{\cosh \tau - \cos \sigma}, \quad y = \frac{c \sin \sigma}{\cosh \tau - \cos \sigma}, \quad -\pi < \sigma < \pi, \quad -\tau_1 < \tau < \tau_1, \quad (54)$$

where $c = \sqrt{(L/2)^2 - 1}$ is the separation coefficient, and $\tau = \pm\tau_1 = \pm \text{arccosh}(L/2)$ describe the TCLs at the particle surfaces at leading order.

2. Interfacial deformations

Paralleling the analysis of section II, the $\mathcal{O}(\text{Ca})$ deformation $h_{\perp}^{(1,0)}$ and $\mathcal{O}(\delta)$ deformation $h_{\perp}^{(0,1)}$ satisfy the stress balance equations

$$\nabla^2 h_{\perp}^{(1,0)} - \text{Bo} h_{\perp}^{(1,0)} = -\hat{\mathbf{e}}_z \cdot [\boldsymbol{\sigma}_{\perp}^{(0,0)}] \cdot \hat{\mathbf{e}}_z, \quad (55)$$

and

$$\nabla^2 h_{\perp}^{(0,1)} - \text{Bo} h_{\perp}^{(0,1)} = 0. \quad (56)$$

The normal-normal stress difference $\hat{\mathbf{e}}_z \cdot [\boldsymbol{\sigma}_\perp^{(0,0)}] \cdot \hat{\mathbf{e}}_z$ can be calculated from the leading order solutions $p_\perp^{(0,0)}$ and $\mathbf{u}_\perp^{(0,0)}$. Then, Eq. (55) in bicylindrical coordinates reads

$$\frac{(\cosh \tau - \cos \sigma)^2}{c^2} \left(\frac{\partial^2 h_\perp^{(1,0)}}{\partial \sigma^2} + \frac{\partial^2 h_\perp^{(1,0)}}{\partial \tau^2} \right) - \text{Bo} h_\perp^{(1,0)} = -\frac{2(\lambda - 1)X(\sigma, \tau)}{c \sin \sigma / (\cosh \tau - \cos \sigma)}, \quad (57)$$

with

$$X = (\cosh \tau - \cos \sigma)^{1/2} \sin^2 \sigma \sum_{n=2}^{\infty} F_n \cosh(n + 1/2) \tau P_n''(\cos \sigma), \quad (58)$$

where P_n denotes the Legendre polynomial of order n , and the coefficients F_n are given in Eqs. (3.55) and (3.56) in [20] and included in Appendix B 1 (see [18] for further details). Likewise, the stress balance equation (56) is given by

$$\frac{(\cosh \tau - \cos \sigma)^2}{c^2} \left(\frac{\partial^2 h_\perp^{(0,1)}}{\partial \sigma^2} + \frac{\partial^2 h_\perp^{(0,1)}}{\partial \tau^2} \right) - \text{Bo} h_\perp^{(0,1)} = 0. \quad (59)$$

The unperturbed fixed contact angle conditions at the TCL are

$$\cos(\pi/2 - \Psi_c) = \pm \hat{\mathbf{e}}_\tau \cdot \hat{\mathbf{n}}_\perp \Big|_{\tau=\pm\tau_1}, \quad (60)$$

where Ψ_c is the inclination angle, $\hat{\mathbf{e}}_\tau$ is the unit tangent to the τ contour lines, and $\hat{\mathbf{n}}_\perp \Big|_{\tau=\pm\tau_1}$ is the unit normal to the fluid interface evaluated at the TCLs (see Fig. 9). Substituting the asymptotic expansions into Eq. (60) and expanding in Ca and δ yields the boundary conditions for $h_\perp^{(1,0)}$ and $h_\perp^{(0,1)}$

$$\left[\pm \frac{\cosh \tau - \cos \sigma}{c} \frac{\partial h_\perp^{(1,0)}}{\partial \tau} + h_\perp^{(1,0)} \right] \Big|_{\tau=\pm\tau_1} = 0, \quad (61)$$

$$\left[\pm \frac{\cosh \tau - \cos \sigma}{c} \frac{\partial h_\perp^{(0,1)}}{\partial \tau} + h_\perp^{(0,1)} \right] \Big|_{\tau=\pm\tau_1} = -\tilde{\theta}_s, \quad (62)$$

respectively (see Appendix B 2 for details). It should be noted that the PDEs (55) and (56) are defined on the rectangular region $|\tau| < \tau_1$ and $|\sigma| < \pi$. These second order linear PDEs can be solved with a straightforward centered finite difference scheme, along with second order finite difference approximations of Eqs. (61) and (62), plus the periodic conditions at

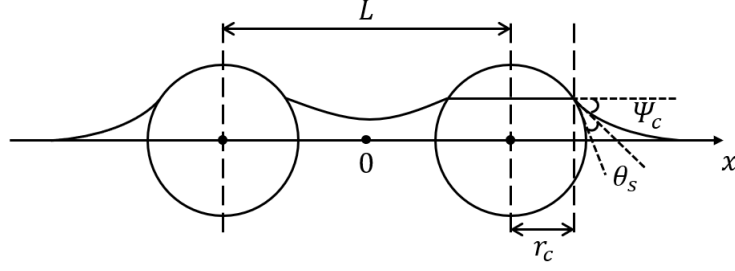


FIG. 9. Sketch of the fluid interface near two spherical particles.

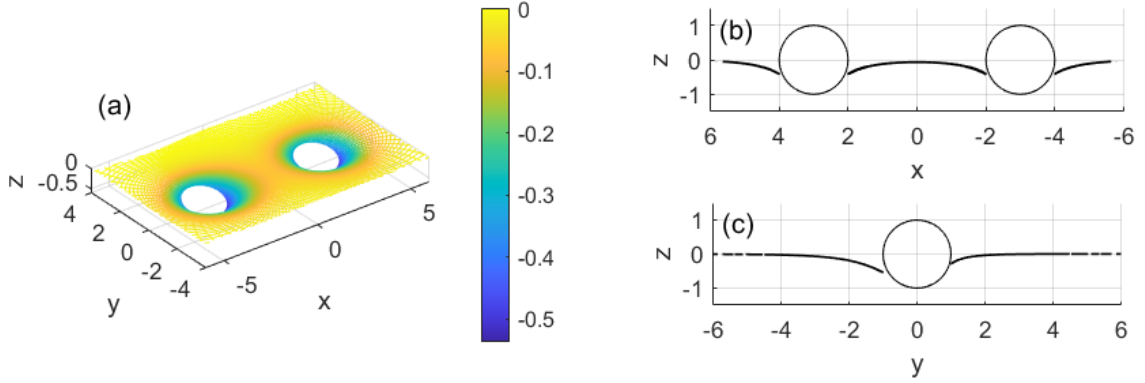


FIG. 10. The numerically calculated interfacial deformation, $h = Ca h_{\perp}^{(1,0)} + \delta h_{\perp}^{(0,1)}$, around two spherical particles with $Ca = \delta = \tilde{\theta}_s = 1$, $Bo = 1$, $\lambda = 2$ and $L = 6$: (a) 3D visualization, where the colormap shows the interfacial height near the particle (b) x - z cross-section view for $y = 0$, (c) y - z cross-section view for $x = L/2$.

$\sigma = \pm\pi$. The resulting linear system is solved using MATLAB's backslash operator. Second order convergence is observed. The partial derivatives of $h_{\perp}^{(1,0)}$ and $h_{\perp}^{(0,1)}$ with respect to x and y are obtained using finite difference approximations, which have linear convergence. Fig. 10 shows the numerically evaluated interfacial deformation $h = Ca h_{\perp}^{(1,0)} + \delta h_{\perp}^{(0,1)}$ around two spherical particles and its cross-section plots with $Ca = 1$, $\delta = \tilde{\theta}_s = 1$, $Bo = 1$, and $L = 6$. As in Figs. 2 and 3, we set $Ca = \delta = \theta_s = 1$ to illustrate the deformations.

3. Calculation of the drag force

We let $\Sigma_{P_i^I}$ and $\Sigma_{P_i^{II}}$ denote the respective surfaces of the two particles in fluid phase i . Then, the total drag force acting on the two particles is defined as

$$F_{\perp} = \mathbf{F}_{\perp} \cdot (-\mathbf{u}_{\perp}^{\infty}) = \sum_{i=1,2} \iint_{\Sigma_{P_i^I}} \boldsymbol{\sigma}_{\perp} \cdot (-\tilde{\mathbf{n}}_{\perp}) \cdot (-\mathbf{u}_{\perp}^{\infty}) d\Sigma + \iint_{\Sigma_{P_i^{II}}} \boldsymbol{\sigma}_{\perp} \cdot (-\tilde{\mathbf{n}}_{\perp}) \cdot (-\mathbf{u}_{\perp}^{\infty}) d\Sigma. \quad (63)$$

By symmetry arguments, the drag forces on the two spheres are equal and the drag on each sphere is $F_{\perp}/2$. Paralleling the drag force calculation (29) for a single sphere, we find that to order Ca and δ , $F_{\perp} = F_{\perp}^{(0,0)} + \text{Ca}F_{\perp}^{(1,0)} + \delta F_{\perp}^{(0,1)}$, where the $\mathcal{O}(1)$ drag force

$$F_{\perp}^{(0,0)} = \sum_{i=1,2} \iint_{\Sigma_{P_i^{I,II}}^{(0)}} \boldsymbol{\sigma}_{\perp}^{(0,0)} \cdot \tilde{\mathbf{n}}_{\perp}^{(0,0)} \cdot \mathbf{u}_{\perp}^{\infty} d\Sigma \quad (64)$$

is computed by Goldman et al. [20]. The $\mathcal{O}(\text{Ca})$ and $\mathcal{O}(\delta)$ drag forces, $F_{\perp}^{(1,0)}$ and $F_{\perp}^{(0,1)}$, are defined as

$$F_{\perp}^{(j,k)} = \sum_{i=1,2} \iint_{\Sigma_{P_i^{I,II}}^{(0)}} \boldsymbol{\sigma}_{\perp}^{(j,k)} \cdot \tilde{\mathbf{n}}_{\perp}^{(0,0)} \cdot \mathbf{u}_{\perp}^{\infty} d\Sigma - \int_{\Sigma_{\text{TCL}^{I,II}}^{(0)}} h_{\perp}^{(j,k)}[\boldsymbol{\sigma}_{\perp}^{(0,0)}] \cdot \tilde{\mathbf{n}}_{\perp}^{(0,0)} \cdot \mathbf{u}_{\perp}^{\infty} ds, \quad (65)$$

with $(j, k) = (1, 0)$ and $(0, 1)$, where the integrals can be evaluated over particle I and II with

$$\Sigma_{P_i^{I,II}}^{(0)} = \{(x, y, z) | (x \pm L/2)^2 + y^2 + z^2 = 1\}, \quad \text{and } \Sigma_{\text{TCL}^{I,II}}^{(0)} = \{(\sigma, \tau, z) | \tau = \mp \tau_1, z = 0\}.$$

The surface integrals in Eq. (65) are calculated using the Lorentz reciprocal theorem, similar to the single particle problem (see details in Appendix B3). The line integrals in Eq. (65) represent the force contribution from the interfacial deformations at TCLs (see [18]).

Evaluating $F_{\perp}^{(1,0)}$ and $F_{\perp}^{(0,1)}$ using the trapezoidal rule, we obtain the truncated asymptotic expansion for the drag force

$$F_{\perp} = 6\pi(\lambda + 1)f_{\perp}^{(0)}(L) + \delta\tilde{\theta}_s(\lambda - 1)f_{\perp}^{(1)}(\text{Bo}, L), \quad (66)$$

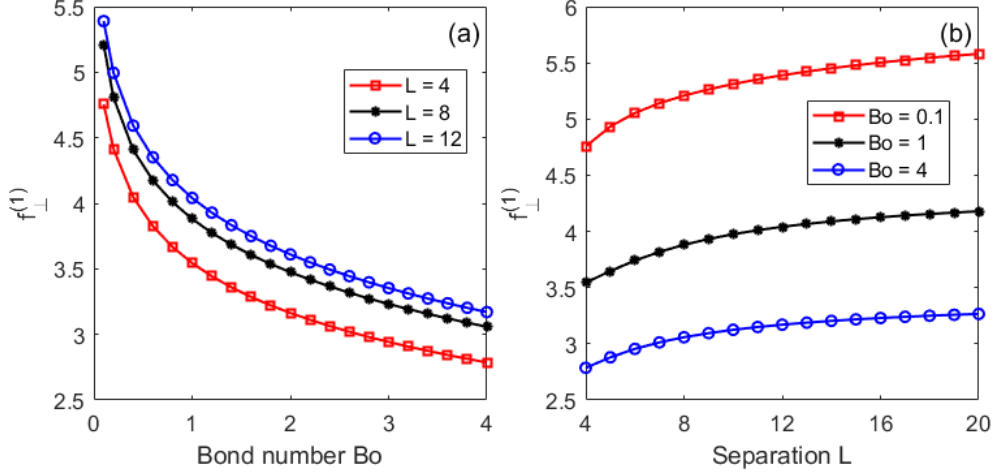


FIG. 11. The drag coefficient plotted as functions of (a) Bond number Bo and (b) separation L .

where $f_{\perp}^{(0)}$ is the leading order drag coefficient obtained by Goldman et al. [20], and $f_{\perp}^{(1)}$ is the correction drag coefficient in terms of Bo and L , which is shown in Fig. 11. Note that the flow-induced drag $F_{\perp}^{(1,0)}$ integrates to zero due to anti-symmetry. Fig. 11(a) shows that an increase in Bo reduces the drag coefficient $f_{\perp}^{(1)}$. In Fig. 11(b), we see that $f_{\perp}^{(1)}$ decreases as the separation distance L decreases. This is because as the particles become closer to each other, the total amount of interfacial deformation around them decreases, and thus the correction drag caused by the deformation decreases. In the limit of large separation, the flow field and the interfacial deformation near each particle converge toward the single-particle solutions, and the correction drag coefficient $f_{\perp}^{(1)}/2$ converges to the value of $f^{(1)}$ in Eq. (50) (see section III C below).

B. Flow parallel to the particles' line-of-centers

Next, we consider the problem of two spherical particles at a fluid interface undergoing uniform flow parallel to their line-of-centers (see Fig. 12). The centers of masses of the particles are located at $-L/2\hat{e}_y$ and $L/2\hat{e}_y$, respectively, and the nondimensionalized background flow is denoted by $\mathbf{u}_{\parallel}^{\infty} = \hat{e}_y$. We use the same asymptotic approach as we did for the previous problems and adopt similar notations.

Stimson and Jeffery [19] solved the problem of two spheres translating parallel to their line-of-centers at low Reynolds number using the stream function method, which gives us

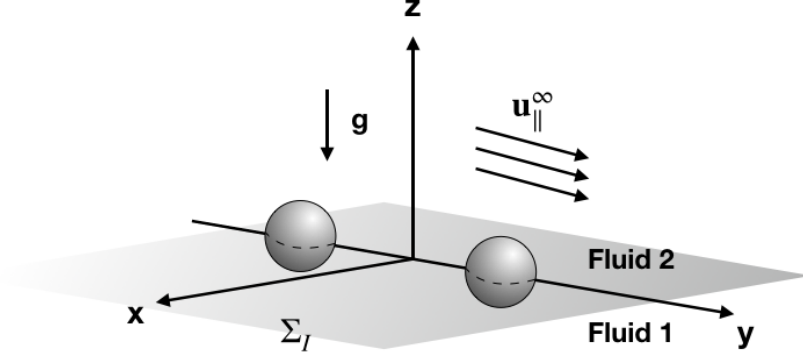


FIG. 12. Illustration of two spherical particles straddling a fluid interface between two immiscible viscous fluids, where the background uniform flow is parallel to the line-of-centers of the two particles.

the analytical solution for the leading order velocity field $\mathbf{u}_{\parallel}^{(0,0)}$ (see Appendix C 1).

A similar bicylindrical coordinates system (σ, τ, z) is introduced:

$$x = \frac{c \sin \sigma}{\cosh \tau - \cos \sigma}, \quad y = \frac{c \sinh \tau}{\cosh \tau - \cos \sigma}, \quad -\pi < \sigma < \pi, \quad -\tau_1 < \tau < \tau_1, \quad (67)$$

where $c = \sqrt{(L/2)^2 - 1}$, and $\tau = \pm\tau_1 = \pm \text{arccosh}(L/2)$ describe the equilibrium TCLs at the particle surfaces.

1. Leading order pressure recovery

Unlike the previous cases, the jump in the pressure across the interface needed for the drag calculation is not given explicitly in [19]. But this can be found numerically by solving the differential equation for $(\lambda - 1)\tilde{p}_{\parallel} = p_{\parallel}^{2(0,0)} - p_{\parallel}^{1(0,0)}$, the leading order pressure difference across the flat fluid interface $\Sigma_I^{(0)}$. The equation that \tilde{p}_{\parallel} satisfies is

$$\frac{\partial^2 \tilde{p}_{\parallel}}{\partial x^2} + \frac{\partial^2 \tilde{p}_{\parallel}}{\partial y^2} = -\frac{1}{x} \left(\frac{\partial^2 u_{\parallel x}^{(0,0)}}{\partial x^2} + \frac{1}{x} \frac{\partial u_x^{(0,0)}}{\partial x} + \frac{\partial^2 u_{\parallel x}^{(0,0)}}{\partial y^2} - \frac{u_{\parallel x}^{(0,0)}}{x^2} \right), \quad (68)$$

$$\frac{\partial \tilde{p}_{\parallel}}{\partial n} = \nabla^2 \mathbf{u}_{\parallel}^{(0,0)} \cdot \tilde{\mathbf{n}}^{(0,0)} \quad \text{at } \Sigma_{\text{TCL}^{\text{I,II}}}^{(0)}, \quad (69)$$

$$\tilde{p}_{\parallel} \rightarrow 0 \quad \text{as } |\mathbf{x}| \rightarrow \infty, \quad (70)$$

where $\partial/\partial n$ denotes the normal derivative at the base TCLs, and the boundary condition (69) is obtained by taking the normal component of the momentum equation (see Appendix

C 2 for the detailed derivation of Eq. (68)). In bicylindrical coordinates, the problem for \tilde{p}_{\parallel} is given by

$$\frac{(\cosh \tau - \cos \sigma)^2}{c^2} \left(\frac{\partial^2 \tilde{p}_{\parallel}}{\partial \sigma^2} + \frac{\partial^2 \tilde{p}}{\partial \tau^2} \right) = F(\sigma, \tau), \quad (71)$$

$$\left. \frac{\partial \tilde{p}_{\parallel}}{\partial n} \right|_{\tau=\pm\tau_1} = \tilde{f}(\sigma, \pm\tau_1), \quad (72)$$

$$\tilde{p}_{\parallel}(-\pi, \tau) = \tilde{p}_{\parallel}(\pi, \tau), \quad \frac{\partial \tilde{p}_{\parallel}}{\partial \sigma}(-\pi, \tau) = \frac{\partial \tilde{p}_{\parallel}}{\partial \sigma}(\pi, \tau), \quad (73)$$

$$\tilde{p}_{\parallel}(0, 0) = 0 \quad (|\mathbf{x}| \rightarrow \infty \implies (\sigma, \tau) \rightarrow (0, 0)), \quad (74)$$

where

$$\tilde{F}(\sigma, \tau) = -\frac{1}{x} \left(\frac{\partial^2 u_{\parallel x}^{(0,0)}}{\partial x^2} + \frac{1}{x} \frac{\partial u_{\parallel x}^{(0,0)}}{\partial x} + \frac{\partial^2 u_{\parallel x}^{(0,0)}}{\partial y^2} - \frac{u_{\parallel x}^{(0,0)}}{x^2} \right), \quad (75)$$

$$\tilde{f}(\sigma, \pm\tau_1) = \nabla^2 \mathbf{u}_{\parallel}^{(0,0)} \cdot \tilde{\mathbf{n}}(\sigma, \pm\tau_1). \quad (76)$$

The unit normal vector to the base TCLs, $\tilde{\mathbf{n}}^{(0,0)}$, is

$$\tilde{\mathbf{n}}^{(0,0)}|_{\tau=\pm\tau_1} = \mp \hat{\mathbf{e}}_{\tau} = \mp \left(-\frac{\sin \sigma \sinh(\pm\tau_1)}{\cosh(\pm\tau_1) - \cos \sigma} \hat{\mathbf{e}}_x + \frac{1 - \cosh \sigma \cosh(\pm\tau_1)}{\cosh(\pm\tau_1) - \cos \sigma} \hat{\mathbf{e}}_y \right). \quad (77)$$

This partial differential equation for \tilde{p}_{\parallel} is solved numerically using the finite difference method and MATLAB's backslash operator to invert the discretized linear system of difference equations, and the numerical solutions show quadratic convergence [18].

2. Interfacial deformations and drag force

The static deformation $\delta h_{\parallel}^{(0,1)}$, induced by the contact angle, describes the equilibrium interface shape in the absence of flow. Thus, the static deformation is unaffected by the flow orientation and $h_{\perp}^{(0,1)} \equiv h_{\parallel}^{(0,1)}$ with the proper axis rotation. The $\mathcal{O}(\text{Ca})$ interfacial deformation $h_{\parallel}^{(1,0)}$, induced by the background flow, satisfies the stress balance equation

$$\nabla h_{\parallel}^{(1,0)} - \text{Bo} h_{\parallel}^{(1,0)} = -\hat{\mathbf{e}}_z \cdot [\boldsymbol{\sigma}_{\parallel}^{(0,0)}] \cdot \hat{\mathbf{e}}_z, \quad (78)$$

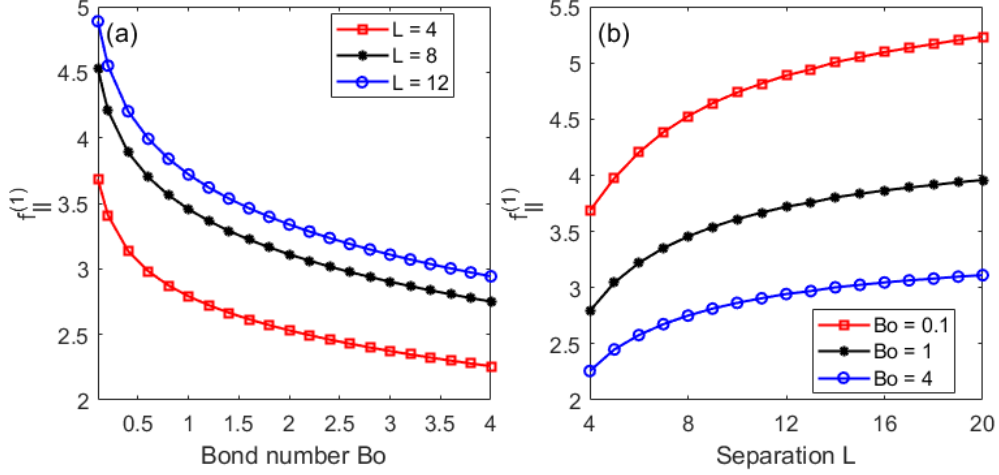


FIG. 13. The drag coefficient plotted as functions of (a) Bond number Bo and (b) separation L .

where the stress difference is given by

$$[\sigma_{\parallel}^{(0,0)}] = (\lambda - 1)(-\tilde{p}_{\parallel} + \nabla[\mathbf{u}_{\parallel}^{(0,0)}] + (\nabla[\mathbf{u}_{\parallel}^{(0,0)}])^T). \quad (79)$$

The stress balance equation (78) is solved as before using a second order centered finite difference method (see [18] for details).

We use the same approach as in the previous cases to obtain the drag force exerted on the two particles, which is given in the form of a truncated asymptotic expansion:

$$F_{\parallel} = 6\pi(\lambda + 1)f_{\parallel}^{(0)}(L) + \delta\tilde{\theta}_s(\lambda - 1)f_{\parallel}^{(1)}(Bo, L), \quad (80)$$

where $f_{\parallel}^{(0)}$ is the leading order drag coefficient obtained by Stimson and Jeffery [19], and $f_{\parallel}^{(1)}$ is the correction drag coefficient for the contact angle induced deformation $\delta h^{(0,1)}$. The drag contribution from the flow-induced deformation $Ca h^{(1,0)}$ integrates to zero due to anti-symmetry. Fig. 13 shows the drag coefficient $f_{\parallel}^{(1)}$ as a function of Bo and L . The dependence of $f_{\parallel}^{(1)}$ on Bo and L is similar to that found for the perpendicular flow past two spheres.

C. Large Bond number and separation distance L limits

In the limit of large Bond number, it appears empirically that the two-particle drag coefficients $f_{\perp}^{(1)}$ and $f_{\parallel}^{(1)}$ decay asymptotically in the same way as the single-particle drag in

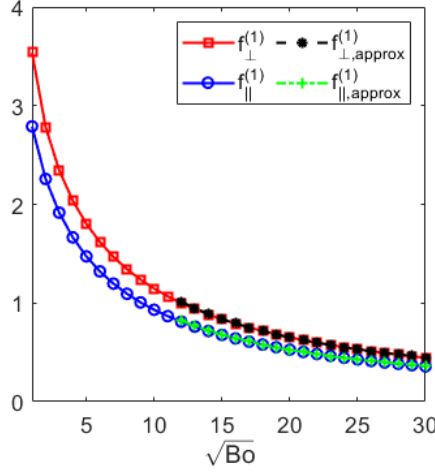


FIG. 14. Comparison of the drag coefficients, $f_{\perp}^{(1)}$ and $f_{\parallel}^{(1)}$, and their corresponding asymptotic approximations, $f_{\perp,\text{approx}}^{(1)}$ and $f_{\parallel,\text{approx}}^{(1)}$, for large Bond number with $L = 4$, where $C_1 \approx 14.31$ and $C_2 \approx -25.97$ for $f_{\perp}^{(1)}$ and $C_1 \approx 11.45$ and $C_2 \approx -19.02$ for $f_{\parallel}^{(1)}$.

Eq. (51). Their asymptotic behaviors can be expressed as

$$f_{\perp}^{(1)}, f_{\parallel}^{(1)} \sim f_{\perp,\text{approx}}^{(1)}, f_{\parallel,\text{approx}}^{(1)} = \frac{C_1}{\sqrt{\text{Bo}}} + \frac{C_2}{\text{Bo}}, \quad (81)$$

where C_1 and C_2 are coefficients depending on L . We can determine values of C_1 and C_2 for a fixed value of L via curve fitting (see [18] for details). For $L = 4$, we find that $C_1 \approx 14.31$ and $C_2 \approx -25.97$ for $f_{\perp}^{(1)}$ and $C_1 \approx 11.45$ and $C_2 \approx -19.02$ for $f_{\parallel}^{(1)}$ when $15 \leq \sqrt{\text{Bo}} \leq 30$. Fig. 14 shows the drag coefficients $f_{\perp}^{(1)}$ and $f_{\parallel}^{(1)}$ and their approximations in Eq. (81).

As the separation distance L increases, the values of $f_{\perp}^{(1)}/2$ and $f_{\parallel}^{(1)}/2$ should converge to the single-particle drag coefficient $f^{(1)}$ in Eq. (50). Let $f_{\perp}^{*(1)}$ and $f_{\parallel}^{*(1)}$ denote the two-particle correction drags normalized by the drag of two isolated particles, i.e.,

$$f_{\perp}^{*(1)} = \frac{f_{\perp}^{(1)}}{2f^{(1)}}, \quad f_{\parallel}^{*(1)} = \frac{f_{\parallel}^{(1)}}{2f^{(1)}}. \quad (82)$$

In Fig. 15, we plot these correction drags for the special case of $\text{Bo} = 1$. We observe that the correction drag in the case of two particles in a parallel flow has a slower convergence with increasing L compared to that in the perpendicular-flow case. This is not surprising given that there is a difference in the convergence rates of the leading order solutions,

i.e., $f_{\perp}^{(0)} \sim 1 - 3/4L$ for $L \gg 1$ and $f_{\parallel}^{(0)} \sim 1 - 3/2L$ [19, 20]. Similar to the leading order solutions, the deviations of the correction drag coefficients $f_{\perp}^{(1)}$ and $f_{\parallel}^{(1)}$ appear numerically to have asymptotic decays of order $1/L$, i.e.,

$$f_{\perp}^{*(1)}, f_{\parallel}^{*(1)} \sim f_{\perp, \text{approx}}^{*(1)}, f_{\parallel, \text{approx}}^{*(1)} = 1 - D/L, \quad (83)$$

where D is a coefficient depending on Bo . The value of D can be determined by curve fitting (see Fig. 15) to the numerical solutions. For $\text{Bo} = 1$, D is estimated to be: $D \approx 0.95$ for $f_{\perp}^{*(1)}$ and $D \approx 1.91$ for $f_{\parallel}^{*(1)}$ when $20 \leq L \leq 40$.

Both of the above limiting cases suggest that a more general result might exist in the large Bo and large L limit. In particular, Eqs. (51), (82) and (83) suggest the coefficient D becomes independent of Bo . This is verified by fitting to the numerical solution to find D . For $100 \leq \text{Bo} \leq 400$ and $50 \leq L \leq 200$, we find $D \approx 0.80$ for $f_{\perp}^{*(1)}$ and $D \approx 1.54$ for $f_{\parallel}^{*(1)}$. Note that these fitted values of D are close to the coefficients noted above for the leading order drags ($3/4$ and $3/2$), suggesting that these limiting coefficients might be the appropriate limits for D if larger L s were considered. These calculations suggest that the approximations (51), (82), and (83) along with the large L approximations of $f_{\perp}^{(0)}$ and $f_{\parallel}^{(0)}$ can be used in Eqs. (66) and (80) to give an analytic formula for the drag in the large Bo and large L limit.

D. Arbitrarily oriented flow

The analyses of two spherical particles undergoing flows perpendicular and parallel to their line-of-centers allow the calculation of arbitrarily oriented flow past two spheres at an interface. As illustrated in Fig. 16, the uniform background flow \mathbf{u}^{∞} is oriented at an arbitrary angle relative to the spheres' line-of-centers. The flow \mathbf{u}^{∞} can be decomposed into a perpendicular component to the line-of-centers and a parallel component, i.e.,

$$\mathbf{u}^{\infty} = \mathbf{u}_{\perp}^{\infty} + \mathbf{u}_{\parallel}^{\infty} \quad (||\mathbf{u}^{\infty}|| = 1), \quad (84)$$

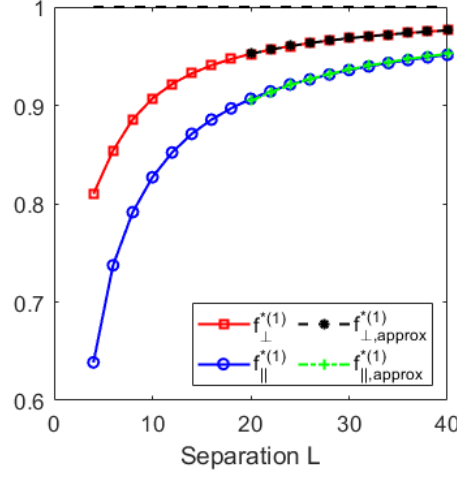


FIG. 15. Comparison of the normalized drag coefficients, $f_{\perp}^{*(1)}$ and $f_{\parallel}^{*(1)}$, and their corresponding asymptotic approximations, $f_{\perp}^{*(1)}$ and $f_{\parallel}^{*(1)}$, for large L with $\text{Bo} = 1$, where $D \approx 0.95$ for $f_{\perp}^{*(1)}$ and $D \approx 1.91$ for $f_{\parallel}^{*(1)}$.

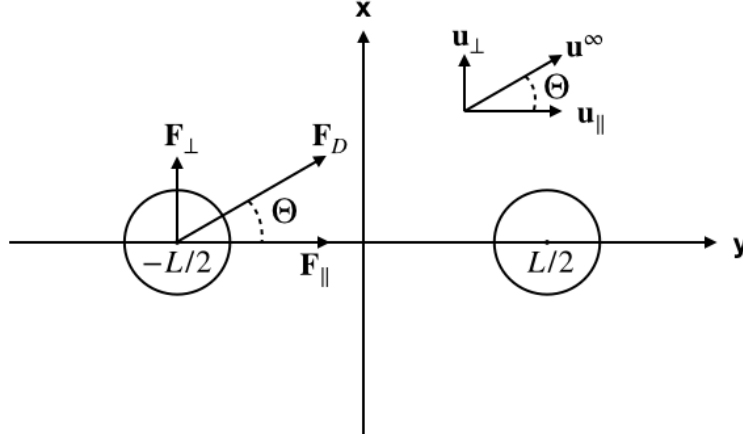


FIG. 16. Sketch of the x - y cross-section view of two particles at a fluid interface undergoing arbitrarily oriented uniform flow in the x - y plane.

with

$$\mathbf{u}_{\perp}^{\infty} = \sin \Theta \hat{\mathbf{e}}_x, \quad \mathbf{u}_{\parallel}^{\infty} = \cos \Theta \hat{\mathbf{e}}_y, \quad (85)$$

where Θ denotes the angle between the flow direction and the line-of-centers of the two spheres (see Fig. 16). The linearity of the Stokes equation and the boundary conditions of the $\mathcal{O}(\text{Ca})$ and $\mathcal{O}(\delta)$ problems allows us to calculate the drag force acting on the particles, \mathbf{F}_D , by vectorially combining the forces exerted by the perpendicular flow $\mathbf{u}_{\perp}^{\infty}$ and the parallel

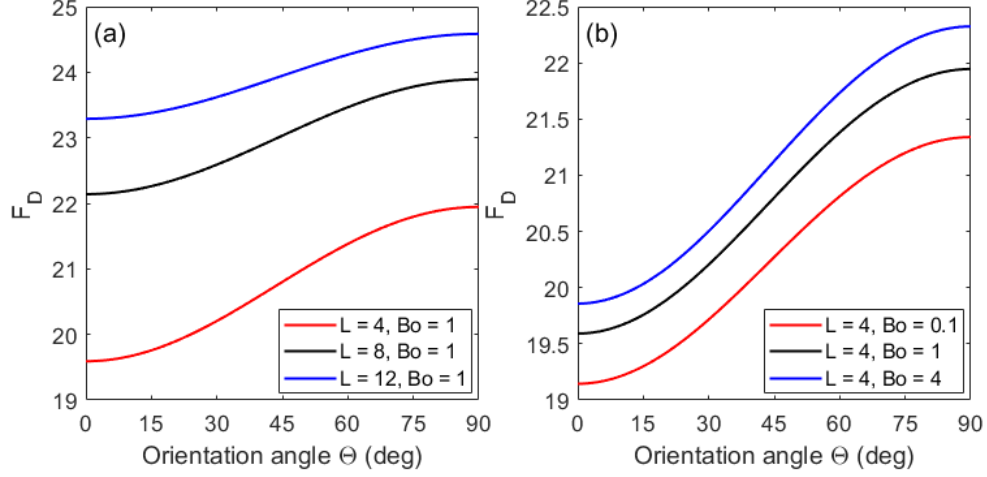


FIG. 17. The magnitude of the drag force plotted as a function of the orientation angle Θ with $\delta = \theta_s = 1$, $\lambda = 1/2$, and varying values of separation L (a) and Bond number Bo (b).

flow $\mathbf{u}_\parallel^\infty$, i.e.,

$$\mathbf{F}_D = \mathbf{F}_\perp + \mathbf{F}_\parallel \quad (86)$$

with

$$\mathbf{F}_\perp = F_\perp \sin \Theta \hat{\mathbf{e}}_x, \quad \mathbf{F}_\parallel = F_\parallel \cos \Theta \hat{\mathbf{e}}_y, \quad (87)$$

where F_\perp and F_\parallel are given in Eqs. (66) and (80), respectively. The magnitude of the drag force is given by

$$F_D = \|\mathbf{F}_D\| = \sqrt{(F_\perp \sin \Theta)^2 + (F_\parallel \cos \Theta)^2}. \quad (88)$$

In Fig. 17, F_D is plotted as a function of the orientation angle Θ . Given the same set of parameters, the drag force has a larger magnitude when the background flow is perpendicular to the line-of-centers than when parallel. As Θ increases from 0° to 90° , the perpendicular component in the background flow becomes more dominant and F_D increases.

E. Capillary attraction force

The dimensionless capillary force scaled by γa exerted on the spherical particle due to the interfacial deformation can be computed by integrating the capillary stress along the TCL, i.e.,

$$\mathbf{F}_C = \int_{\Sigma_{\text{TCL}}} \tilde{\mathbf{n}}_C \, ds, \quad (89)$$

where $\tilde{\mathbf{n}}_C = \tilde{\mathbf{t}}_C \times \hat{\mathbf{n}}$ is the capillarity unit vector that is normal to the TCL and lies in the interface, and $\tilde{\mathbf{t}}_C$ is the unit tangent vector to the TCL. Let $\mathbf{r}_C = \hat{\mathbf{e}}_r + \hat{\mathbf{e}}_z h(r, \phi) \hat{\mathbf{e}}_z$ denote the position vector describing a point on the TCL at the particle surface.

Substituting all expansions into this vector formula, we find that the capillarity unit vector $\tilde{\mathbf{n}}_C$ is

$$\tilde{\mathbf{n}}_C = \tilde{\mathbf{t}}_C \times \hat{\mathbf{n}} = \hat{\mathbf{e}}_r + \left(\text{Ca} \frac{\partial h^{(1,0)}}{\partial r} + \delta \frac{\partial h^{(0,1)}}{\partial r} \right) \hat{\mathbf{e}}_z, \quad (90)$$

and to order Ca and δ , the capillary force is

$$\mathbf{F}_C = F_C \hat{\mathbf{e}}_z = \int_0^{2\pi} \left(\text{Ca} \frac{\partial h^{(1,0)}}{\partial r}(1, \phi) + \delta \frac{\partial h^{(0,1)}}{\partial r}(1, \phi) \right) \hat{\mathbf{e}}_z \, d\phi \quad (91)$$

$$= -2\pi\delta(-\tilde{\theta}_s + \tilde{b})\sqrt{\text{Bo}}C_0K_1(\sqrt{\text{Bo}})\hat{\mathbf{e}}_z, \quad (92)$$

where C_0 is defined in Eq. (27). We observe that the flow-induced deformation does not contribute to the capillary force at leading order due to the anti-symmetric pattern of the interfacial height at the TCL. The interfacial height depends on the azimuthal angle ϕ in the form of $\sin \phi$ and the capillary stress along the TCL integrates to zero. The leading order contribution to \mathbf{F}_C comes from the static deformation, which yields an $\mathcal{O}(\delta)$ capillary force in the vertical ($\hat{\mathbf{e}}_z$) component. Note that the lateral capillary force is zero at leading order because the corrections to the shape of the TCL is at orders δ and Ca in the vertical component and at higher orders in the horizontal components (assuming $\text{Bo} = \mathcal{O}(1)$).

Paralleling the single-particle capillary force calculation, we are able to obtain capillary forces exerted by the deformed interface near two spherical particles. We first consider the case where the two particles at the interface undergo uniform flows perpendicular to

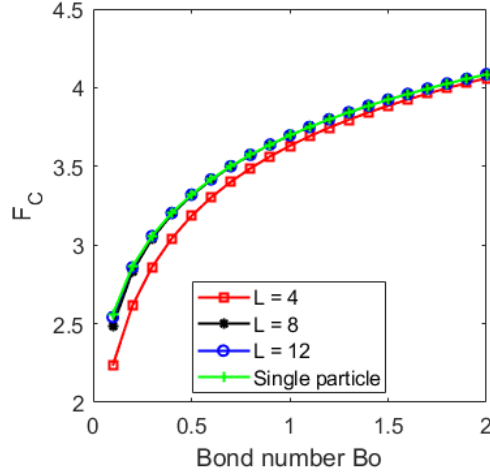


FIG. 18. The dimensionless capillary force plotted as a function of the Bond number Bo . The green curve shows the single-particle capillary force; the red, black and blue curves are the capillary forces exerted on one of the two particles due to the two-particle deformations in perpendicular background flows, with separation distance $L = 4, 8$ and 12 , respectively. Parameter values: $Ca = 1, \delta = \tilde{\theta}_s = 1, \tilde{b} = 0$.

their line-of-centers (see Appendix D for detailed calculations). The leading order capillary force F_C is given by Eq. (D4). Similar to the single-particle problem, the flow-induced deformation does not contribute to the capillary force at leading order due to the anti-symmetry argument. Also, due to the symmetric static interface shape in the direction of the line-of-centers of the particles, the vertical capillary forces exerted on the two particles are identical. In Fig. 18, the capillary forces due to the single-particle deformation and the two-particle deformations with perpendicular background flows are plotted as a function of the Bond number. As the separation distance increases, the static deformation near each particle converges to the single-particle deformation, and we see that the capillary force exerted on each particle converges to the single-particle capillary force.

In the case of two particles at an interface in a parallel background flow, the flow-induced deformation's contribution to the leading order capillary force does not vanish because the two particles' interaction with the flow breaks the anti-symmetry at the TCLs. As a result, the flow-induced deformations at the two particles' TCLs have the same magnitude but opposite signs, which implies the $\mathcal{O}(Ca)$ capillary forces acting on the two particles also have the same magnitude and different signs. Fig. 19 shows the capillary force exerted on the particle centered at $-L/2\hat{e}_y$ (Σ_P^I) as a function of the Bond number Bo , with different

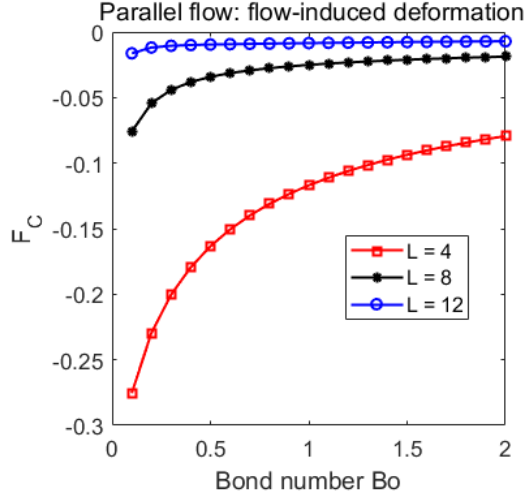


FIG. 19. The dimensionless capillary force exerted on particle I (Σ_P^I) due to the parallel flow-induced deformations plotted as a function of the Bond number Bo , with separation $L = 4, 8$, and 12 ($Ca = 1, \lambda = 0$).

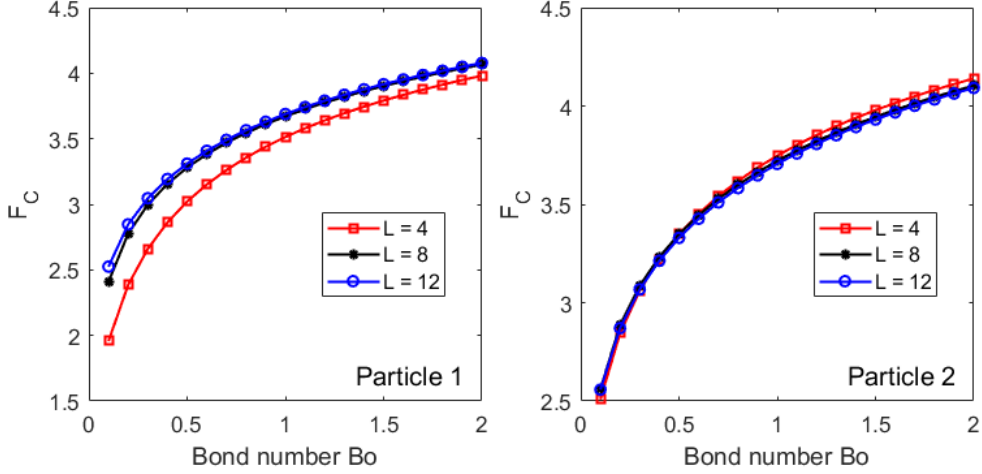


FIG. 20. The dimensionless capillary force due to the total deformations near two particles undergoing parallel background flows. Parameter values: $Ca = 1, \delta = \tilde{\theta}_s = 1, \lambda = 0$.

values of separation L . Since the orientation of the background flow does not affect the static deformation, the $\mathcal{O}(\delta)$ capillary force is identical to the one in the perpendicular flow problem. In Fig. 20, we show the leading order capillary force acting on each particle due to the total deformations.

The lateral capillary force at higher orders was calculated by Vella and Mahadevan [21], where they derived the formula of the (dimensionless) capillary force in the absence of flow

from the Nicolson approximation [22–24]:

$$\tilde{F}_C = 2\pi\text{Bo}^{5/2}\Sigma^2 K_1(\sqrt{\text{Bo}L}), \quad (93)$$

where $\Sigma = \frac{2(\rho_P - \Delta\rho) - 1}{3} - \frac{1}{2}\cos\theta_s + \frac{1}{6}\cos^2\theta_s$ and ρ_P is the particle density. The assumptions that the contact angle is close to 90° and the immersion depth is small ($\theta_s = \pi/2 + \delta\tilde{\theta}_s$, $b = \delta\tilde{b}$) imply $\Sigma \sim \delta$ and $\tilde{F}_C \sim \delta^2$, which verifies our discovery that the static deformation does not contribute to the lateral capillary force at order δ . Dörr and Hardt [8] studied the pair interaction of particles by constructing the interfacial deformation around two particles via linear superposition of the single-particle deformation. Under the assumptions of rotated and pinned TCLs and a large particle separation, the interfacial deformation is induced solely by the uniform background flow. Similar to our analysis, Dörr and Hardt’s calculation shows that the leading order capillary force is in the vertical direction and the lateral capillary force comes at higher orders and that the vertical capillary force vanishes when the uniform background flow is perpendicular to the particles’ line-of-centers.

IV. CONCLUSIONS

In this work, we have studied the problems of fluid motion past one and two spherical particles attached to a deformable fluid interface undergoing uniform Stokes flow. Using the two-parameter asymptotic expansions for small Capillary number and correction contact angle, we have obtained the analytical expressions for the flow-induced deformation and the static deformation (induced by the contact angle) around a single particle. In the two-particle problems, where the background flow is perpendicular or parallel to the particles’ line-of-centers, similar deformation solutions were calculated numerically using finite difference methods. To study the effects of interfacial deformations on the drag force exerted on the particles, we used the Lorentz reciprocal theorem to derive analytical expressions for the correction drag forces in terms of the zeroth-order approximations and the deformation solutions. For the single-particle problem, the drag force is given in the form in Eq. (50), where the drag caused by the flow-induced deformation integrates to zero due to its anti-symmetric configuration in the flow direction, and the correction drag caused by the static deformation is shown to linearly depend on the correction contact angle and the viscosity

difference and have a nonlinear dependence on the Bond number. The large Bond number limit is given in Eq. (81). The Bond number characterizes the density mismatch between the two fluid phases, and an increase in the density mismatch flattens the interface shape near the particle, which reduces the effect of the interfacial deformation on the drag force. The normalized drag F_D^* (see Eq. (52)) is shown to be consistent with the 2D numerical results by Loudet et al. [13].

For the two-particle problems, we derived the first-order approximations from the solutions of two spheres translating perpendicular and parallel to their line-of-centers in a viscous fluid [19, 20]. Similar to the single-particle problem, the flow-induced interfacial deformations do not affect the drag force acting on the particles at leading order. The corrected drag forces for the static deformations are given by Eqs. (66) and (80). A more general solution where the uniform background flow is arbitrarily oriented relative the particles' line-of-centers has been obtained by vectorially combining the drag forces exerted by the perpendicular and parallel flows. We have also identified expressions for the drag in the large Bo and L limits. Our predictions for the drag also compares well with the experimental results of Petkov et al. [25] (see Appendix A 3). This is also true of Dörr et al. [7] 's model which has different assumptions. Additional work is needed to clarify these predictions.

In addition, we were able to calculate the capillary force exerted on the particles due to the interfacial deformation. It is shown that the static deformation contributes to the capillary force at order δ in the vertical ($\hat{\mathbf{e}}_z$) component, and the flow-induced deformation doesn't contribute at order Ca in the single-particle case and the two-particle case when the background flow is perpendicular to the particles' line-of-centers. In the case of two particles at an interface in a parallel flow, the flow-induced deformation is shown to have a nonzero contribution to the $\mathcal{O}(Ca)$ vertical capillary force.

ACKNOWLEDGMENTS

This work was partially supported by NSF grants DMS 1718114 and DMS 2108502.

Appendix A: Flow motion past a single particle

1. Leading order and correction problems

The $\mathcal{O}(1)$ pressure and velocity field satisfy the Stokes equations

$$-\nabla p^{(0,0)} + \lambda_i \nabla^2 \mathbf{u}^{(0,0)} = \mathbf{0} \quad (\text{A1})$$

$$\nabla \cdot \mathbf{u}^{(0,0)} = 0, \quad (\text{A2})$$

with boundary conditions

$$\mathbf{u}^{(0,0)}(x, y, z) \rightarrow \mathbf{u}^\infty = \hat{\mathbf{e}}_y \quad \text{as } |\mathbf{x}| \rightarrow \infty \quad (\text{A3})$$

$$\mathbf{u}^{(0,0)}(x, y, z) = \mathbf{0} \quad \text{for } \mathbf{x} \in \Sigma_P^{(0)} = \{(x, y, z) | x^2 + y^2 + z^2 = 1\} \quad (\text{A4})$$

and interface conditions

$$\mathbf{u}^{(0,0)} \cdot \hat{\mathbf{e}}_z = 0, \quad (\text{A5})$$

$$[\mathbf{u}^{(0,0)}] \cdot \hat{\mathbf{t}}^{(0,0)} = 0, \quad (\text{A6})$$

$$\hat{\mathbf{t}}^{(0,0)} \cdot [\boldsymbol{\sigma}^{(0,0)}] \cdot \hat{\mathbf{e}}_z = 0, \quad (\text{A7})$$

for $\mathbf{x} = (x, y, 0)$.

The $\mathcal{O}(\text{Ca})$ pressure and velocity field satisfy the Stokes equation

$$-\nabla p^{(1,0)} + \lambda_i \nabla^2 \mathbf{u}^{(1,0)} = 0, \quad (\text{A8})$$

$$\nabla \cdot \mathbf{u}^{(1,0)} = 0, \quad (\text{A9})$$

with boundary conditions

$$\mathbf{u}^{(1,0)}(x, y, z) \rightarrow \mathbf{0} \quad \text{as } |\mathbf{x}| \rightarrow \infty \quad (\text{A10})$$

$$\mathbf{u}^{(1,0)}(x, y, z) = \mathbf{0} \quad \text{for } \mathbf{x} \in \Sigma_P^{(0)} = \{(x, y, z) | x^2 + y^2 + z^2 = 1\} \quad (\text{A11})$$

and interface conditions

$$\mathbf{u}^{(1,0)} \cdot \hat{\mathbf{e}}_z = -\mathbf{u}^{(0,0)} \cdot \hat{\mathbf{n}}^{(1,0)} - \frac{\partial \mathbf{u}^{(0,0)}}{\partial z} h^{(1,0)} \cdot \hat{\mathbf{e}}_z \quad (\text{A12})$$

$$[\mathbf{u}^{(1,0)}] \cdot \hat{\mathbf{t}}^{(0,0)} = -[\mathbf{u}^{(0,0)}] \cdot \hat{\mathbf{t}}^{(1,0)} - \frac{\partial [\mathbf{u}^{(0,0)}]}{\partial z} h^{(1,0)} \cdot \hat{\mathbf{t}}^{(0,0)} = 0, \quad (\text{A13})$$

for $\mathbf{x} = (x, y, 0)$. The correction deformation $h^{(1,0)}$ satisfies the normal stress balance equation

$$-\nabla^2 h^{(1,0)} + \text{Bo} h^{(1,0)} = \hat{\mathbf{e}}_z \cdot [\boldsymbol{\sigma}^{(0,0)}] \cdot \hat{\mathbf{e}}_z, \quad (\text{A14})$$

and the correction tangential stress balance equation is given by

$$\hat{\mathbf{t}}^{(0,0)} \cdot [\boldsymbol{\sigma}^{(1,0)}] \cdot \hat{\mathbf{e}}_z = -\hat{\mathbf{t}}^{(0,0)} \cdot \frac{\partial [\boldsymbol{\sigma}^{(0,0)}]}{\partial z} h^{(1,0)} \cdot \hat{\mathbf{e}}_z - \hat{\mathbf{t}}^{(0,0)} \cdot [\boldsymbol{\sigma}^{(0,0)}] \cdot \hat{\mathbf{n}}^{(1,0)} - \hat{\mathbf{t}}^{(1,0)} \cdot [\boldsymbol{\sigma}^{(0,0)}] \cdot \hat{\mathbf{e}}_z. \quad (\text{A15})$$

The $\mathcal{O}(\delta)$ pressure and velocity field satisfy the Stokes equation

$$-\nabla p^{(0,1)} + \lambda_i \nabla^2 \mathbf{u}^{(0,1)} = 0, \quad (\text{A16})$$

$$\nabla \cdot \mathbf{u}^{(0,1)} = 0, \quad (\text{A17})$$

with boundary conditions

$$\mathbf{u}^{(0,1)}(x, y, z) \rightarrow \mathbf{0} \quad \text{as } |\mathbf{x}| \rightarrow \infty \quad (\text{A18})$$

$$\mathbf{u}^{(0,1)}(x, y, z) = -\tilde{b} \frac{\partial \mathbf{u}^{(0,1)}}{\partial z} \quad \text{for } \mathbf{x} \in \Sigma_P^{(0)} = \{(x, y, z) | x^2 + y^2 + z^2 = 1\} \quad (\text{A19})$$

and interface conditions

$$\mathbf{u}^{(0,1)} \cdot \hat{\mathbf{e}}_z = -\mathbf{u}^{(0,0)} \cdot \hat{\mathbf{n}}^{(0,1)} - \frac{\partial \mathbf{u}^{(0,0)}}{\partial z} h^{(0,1)} \cdot \hat{\mathbf{e}}_z \quad (\text{A20})$$

$$[\mathbf{u}^{(0,1)}] \cdot \hat{\mathbf{t}}^{(0,0)} = -[\mathbf{u}^{(0,0)}] \cdot \hat{\mathbf{t}}^{(0,1)} - \frac{\partial [\mathbf{u}^{(0,0)}]}{\partial z} h^{(0,1)} \cdot \hat{\mathbf{t}}^{(0,0)} = 0, \quad (\text{A21})$$

for $\mathbf{x} = (x, y, 0)$. The correction deformation $h^{(0,1)}$ satisfies the normal stress balance equation

$$-\nabla^2 h^{(0,1)} + \text{Bo} h^{(0,1)} = 0, \quad (\text{A22})$$

and the correction tangential stress balance equation is given by

$$\hat{\mathbf{t}}^{(0,0)} \cdot [\boldsymbol{\sigma}^{(0,1)}] \cdot \hat{\mathbf{e}}_z = -\hat{\mathbf{t}}^{(0,0)} \cdot \frac{\partial[\boldsymbol{\sigma}^{(0,0)}]}{\partial z} h^{(0,1)} \cdot \hat{\mathbf{e}}_z - \hat{\mathbf{t}}^{(0,0)} \cdot [\boldsymbol{\sigma}^{(0,0)}] \cdot \hat{\mathbf{n}}^{(0,1)} - \hat{\mathbf{t}}^{(0,1)} \cdot [\boldsymbol{\sigma}^{(0,0)}] \cdot \hat{\mathbf{e}}_z. \quad (\text{A23})$$

2. The leading order velocity field

In Cartesian coordinates, the leading order velocity field given by Eqs. (A1)-(A7) is

$$u_x^{(0,0)} = -\frac{3xy(x^2 + y^2 + z^2 - 1)}{4(x^2 + y^2 + z^2)^{5/2}}, \quad (\text{A24})$$

$$u_y^{(0,0)} = \frac{1}{4} \left(4 - \frac{3y^2(x^2 + y^2 + z^2 - 1)}{(x^2 + y^2 + z^2)^{5/2}} - \frac{1}{(x^2 + y^2 + z^2)^{3/2}} - \frac{3}{(x^2 + y^2 + z^2)^{1/2}} \right), \quad (\text{A25})$$

$$u_z^{(0,0)} = -\frac{3yz(x^2 + y^2 + z^2 - 1)}{4(x^2 + y^2 + z^2)^{5/2}}, \quad (\text{A26})$$

where $\mathbf{u}^{(0,0)} = u_x^{(0,0)} \hat{\mathbf{e}}_x + u_y^{(0,0)} \hat{\mathbf{e}}_y + u_z^{(0,0)} \hat{\mathbf{e}}_z$. In cylindrical coordinates, the leading order velocity field is given by

$$u_r^{(0,0)} = \frac{1}{4} \left(4 + \frac{-6r^4 - z^2 - 3z^4 + r^2(2 - 9z^2)}{(r^2 + z^2)^{5/2}} \right) \sin \phi \quad (\text{A27})$$

$$u_\phi^{(0,0)} = \frac{1}{4} \left(4 - \frac{1}{(r^2 + z^2)^{3/2}} - \frac{3}{\sqrt{r^2 + z^2}} \right) \cos \phi \quad (\text{A28})$$

$$u_z^{(0,0)} = -\frac{1}{4} \frac{3rz(r^2 + z^2 - 1)}{(r^2 + z^2)^{5/2}} \sin \phi, \quad (\text{A29})$$

where $\mathbf{u}^{(0,0)} = u_r^{(0,0)} \hat{\mathbf{e}}_r + u_\phi^{(0,0)} \hat{\mathbf{e}}_\phi + u_z^{(0,0)} \hat{\mathbf{e}}_z$.

3. Comparison with experimental data

In the experiments by Petkov et al., the drag coefficients of spherical particles at an air-water interface with viscosity ratio $\mu_2/\mu_1 \approx 0.02$ were measured at $\theta_s = 47.8^\circ, 53.0^\circ$, and 82.0° [25]. Petkov et al. directly measured the immersion depth and calculated the values of the contact angle via balancing vertical forces at equilibrium. Fig. 21 compares the result (50) with experimental and theoretical drag coefficients, where the theoretical models by [7–9] are under the assumptions that $\mu_2/\mu_1 = 0$ and the interface remains flat. The result (50) is in good agreement with the experimental data for $\theta_s = 82.0^\circ$. Further verification is

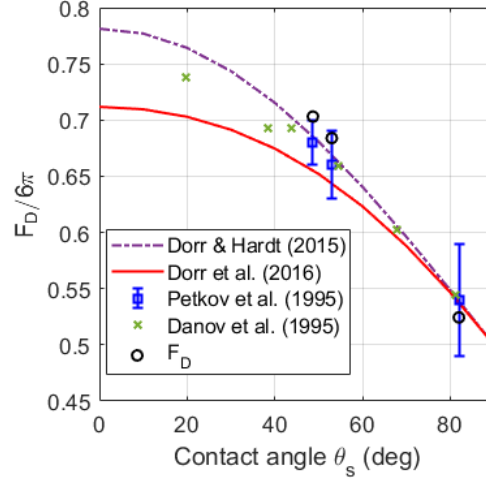


FIG. 21. Comparison of the normalized drag computed from (F_D : Eq. (50)) with experimental data from Petkov et al. [25] and theoretical predictions from the literature [7–9].

required.

Appendix B: Pair interaction: perpendicular flow

1. Leading order pressure and velocity field

The leading order pressure $p_{\perp}^{(0,0)}$ and velocity field $\mathbf{u}_{\perp}^{(0,0)}$ obtained from [20] are given in cylindrical coordinates (x, ρ, φ) and bicylindrical coordinates (η, ξ, ϕ) defined by

$$y = \rho \cos \varphi, \quad z = \rho \sin \varphi,$$

and

$$x = \frac{c \sinh \xi}{\cosh \xi - \cos \eta}, \quad \rho = \frac{c \sin \eta}{\cosh \xi - \cos \eta},$$

where $c = \sqrt{(L/2)^2 - 1}$. The pressure and the components of the velocity field are given in terms of the auxiliary functions, i.e.,

$$p_{\perp}^{(0,0)} = -\frac{\lambda_i}{c} W \cos \phi, \quad (\text{B1})$$

$$u_{\perp x}^{(0,0)} = \frac{1}{2c} (xW + 2cZ) \cos \phi, \quad (\text{B2})$$

$$u_{\perp \rho}^{(0,0)} = -\left(\frac{1}{2c} (\rho W + c(X + Y)) - 1 \right) \cos \phi \quad (\text{B3})$$

$$u_{\perp \varphi}^{(0,0)} = -\left(\frac{1}{2c} (X - Y) + 1 \right) \sin \phi, \quad (\text{B4})$$

where $\mathbf{u}_{\perp}^{(0,0)} = u_{\perp x}^{(0,0)} \hat{\mathbf{e}}_x + u_{\perp \rho}^{(0,0)} \hat{\mathbf{e}}_{\rho} + u_{\perp \varphi}^{(0,0)} \hat{\mathbf{e}}_{\varphi}$. The auxiliary functions are given in the forms:

$$Z = (\cosh \xi - \cos \eta)^{1/2} \sin \eta \sum_{n=1}^{\infty} A_n \sinh(n + 1/2) \xi P'_n(\cos \eta), \quad (\text{B5})$$

$$W = (\cosh \xi - \cos \eta)^{1/2} \sin \eta \sum_{n=1}^{\infty} B_n \cosh(n + 1/2) \xi P'_n(\cos \eta), \quad (\text{B6})$$

$$Y = (\cosh \xi - \cos \eta)^{1/2} \sum_{n=0}^{\infty} D_n \cosh(n + 1/2) \xi P_n(\cos \eta), \quad (\text{B7})$$

$$X = (\cosh \xi - \cos \eta)^{1/2} \sin^2 \eta \sum_{n=2}^{\infty} F_n \cosh(n + 1/2) \xi P''_n(\cos \eta), \quad (\text{B8})$$

where P_n denotes the Legendre polynomial of order n . The formula for the coefficients B_n, D_n , and F_n are

$$B_n = \left[2 \frac{n-1}{2n-1} (\gamma_n - 1) \right] A_{n-1} - 2\gamma_n A_n + \left[2 \frac{n+2}{2n+3} (\gamma_n + 1) \right] A_{n+1}, \quad (\text{B9})$$

$$D_n = 2\sqrt{2} e^{-(n+1/2)\tau_1} \text{sech}(n + 1/2)\tau_1 - \left[\frac{n(n-1)}{2n-1} (\gamma_n - 1) \right] A_{n-1} \\ + \left[\frac{(n+1)(n+1)}{2n+3} (\gamma_n + 1) \right] A_{n+1} \quad (\text{B10})$$

$$F_n = \frac{\gamma_n - 1}{2n-1} A_{n-1} - \frac{\gamma_n + 1}{2n+3} A_{n+1}, \quad (\text{B11})$$

with $\tau_1 = \text{arccosh}(L/2)$ and $\gamma_n = \coth \tau_1 \tanh(n + 1/2)\tau_1$, and A_n satisfies the recurrence equation

$$\begin{aligned}
& \left[(n-1)(\gamma_{n-1} - 1) - \frac{(n-1)(2n-3)}{(2n-1)}(\gamma_n - 1) \right] A_{n-1} \\
& + \left[(2n+1) - 5\gamma_n - \frac{n(2n-1)}{(2n+1)}(\gamma_{n-1} + 1) + \frac{(n+1)(2n+3)}{(2n+1)}(\gamma_{n+1} - 1) \right] A_n \\
& + \left[\frac{(n+2)(2n+5)}{(2n+3)}(\gamma_n + 1) - (n+2)(\gamma_{n+1} + 1) \right] A_{n+1} \\
& = \sqrt{(2)}e^{-(n+1/2)\tau_1} \left[\frac{e^{\tau_1}}{\cosh(n-1/2)\tau_1} - \frac{2}{\cosh(n+1/2)\tau_1} + \frac{e^{-\tau_1}}{\cosh(n+3/2)\tau_1} \right]
\end{aligned} \tag{B12}$$

for $n = 1, 2, \dots$. The approximate values of A_n , $n = 1, \dots, N$, can be obtained by numerically solving the linear system consisting of the first N equations for Eq. (B12).

2. Contact angle conditions

Inserting the asymptotic expansions (53) into the LHS of Eq. (60), we obtain

$$\cos(\pi/2 - \Psi_c) = \sin \Psi_c = \sin(\arcsin(r_c) - \theta_s) \tag{B13}$$

$$= \sin \left(\arcsin(\sqrt{1 - (\text{Ca} h_{\perp}^{(1,0)} + \delta h_{\perp}^{(0,1)})^2}) - (\pi/2 + \delta \tilde{\theta}_s) \right) \tag{B14}$$

$$= -\text{Ca} h^{(1,0)} + \delta \left(-h_{\perp}^{(0,1)} - \tilde{\theta}_s \right) + \dots, \tag{B15}$$

where r_c denotes the radius of the TCL (see Fig. 9). Using the tools of differential geometry, the RHS of Eq. (60) can be written as (see Refs. [26, 27])

$$\hat{\mathbf{e}}_{\tau} \cdot \hat{\mathbf{n}}|_{\tau=\pm\tau_1} = \pm \frac{1}{\sqrt{g}} \sqrt{\frac{g^*}{a_1^*}} \frac{\partial h_{\perp}}{\partial \tau} \Big|_{\tau=\pm\tau_1}, \tag{B16}$$

where $g = c^2/(\cosh \tau - \cos \sigma)^2$ is the component of the metric tensor of the bipolar coordinate system given in Eq. (54), $g^* = g^2$ is the determinant of the metric tensor, and a^* is the determinant of the surface metric tensors of $z = h_{\perp}(\sigma, \tau)$, which is defined by

$$a^* = g^2 \left[1 + \frac{1}{g} \left(\frac{\partial h_{\perp}}{\partial \sigma} \right)^2 \right] \left[1 + \frac{1}{g} \left(\frac{\partial h_{\perp}}{\partial \tau} \right)^2 \right]. \tag{B17}$$

Substituting the expansion of h_\perp into Eq. (B17) yields

$$a^* = g^2 + \text{Ca}^2 g \left[\left(\frac{\partial h_\perp^{(1,0)}}{\partial \tau} \right)^2 + \left(\frac{\partial h_\perp^{(1,0)}}{\partial \sigma} \right)^2 \right] + \delta^2 g \left[\left(\frac{\partial h_\perp^{(0,1)}}{\partial \tau} \right)^2 + \left(\frac{\partial h_\perp^{(0,1)}}{\partial \sigma} \right)^2 \right] \quad (\text{B18})$$

$$+ 2\text{Ca}\delta g \left[\frac{\partial h_\perp^{(1,0)}}{\partial \tau} \frac{\partial h_\perp^{(0,1)}}{\partial \tau} + \frac{\partial h_\perp^{(1,0)}}{\partial \sigma} \frac{\partial h_\perp^{(0,1)}}{\partial \sigma} \right] + \dots \quad (\text{B19})$$

We assume the separation coefficient c is of finite order, i.e., $c^2 = \mathcal{O}(1)$. Then, $g = \mathcal{O}(1)$ and $a^* \approx g^2$. Combining Eqs. (B13) - (B16) and collecting coefficients of Ca and δ , we obtain

$$\pm \frac{\cosh \tau - \cos \sigma}{c} \frac{\partial h_\perp^{(1,0)}}{\partial \tau} + h_\perp^{(1,0)} = 0, \quad (\text{B20})$$

$$\pm \frac{\cosh \tau - \cos \sigma}{c} \frac{\partial h_\perp^{(0,1)}}{\partial \tau} + h_\perp^{(0,1)} = -\tilde{\theta}_s. \quad (\text{B21})$$

3. Applying the Lorentz reciprocal theorem

Applying the Lorentz reciprocal theorem to the surface integral over the particle surfaces $\Sigma_{P_{1,2}^{\text{I,II}}}$ in Eq. (65) for $(j, k) = (1, 0)$, we obtain

$$\begin{aligned} \sum_{i=1,2} \iint_{\Sigma_{P_i^{\text{I,II}}}^{(0)}} \boldsymbol{\sigma}_\perp^{(1,0)} \cdot \tilde{\mathbf{n}}^{(0,0)} \cdot \mathbf{u}_\perp^\infty \, d\Sigma &= \iint_{\Sigma_I^{(0)}} [\boldsymbol{\sigma}_\perp^{(0,0)}] \cdot (-\hat{\mathbf{e}}_z) \cdot \mathbf{u}_{\perp,D}^{(1,0)} \, d\Sigma \\ &\quad - \iint_{\Sigma_I^{(0)}} [\boldsymbol{\sigma}_\perp^{(1,0)}] \cdot (-\hat{\mathbf{e}}_z) \cdot \mathbf{u}_{\perp,D}^{(0,0)} \, d\Sigma, \end{aligned} \quad (\text{B22})$$

where

$$\mathbf{u}_{\perp,D}^{(1,0)} \cdot \hat{\mathbf{e}}_z = -\mathbf{u}_{\perp,D}^{(0,0)} \cdot \hat{\mathbf{n}}^{(1,0)} - \frac{\partial \mathbf{u}_{\perp,D}^{(0,0)}}{\partial z} h_\perp^{(1,0)} \cdot \hat{\mathbf{e}}_z, \quad (\text{B23})$$

$$\hat{\mathbf{t}}^{(0,0)} \cdot [\boldsymbol{\sigma}_\perp^{(1,0)}] \cdot \hat{\mathbf{e}}_z = -\hat{\mathbf{t}}^{(0,0)} \cdot \frac{\partial [\boldsymbol{\sigma}_\perp^{(0,0)}]}{\partial z} h_\perp^{(1,0)} \cdot \hat{\mathbf{e}}_z - \hat{\mathbf{t}}^{(0,0)} \cdot [\boldsymbol{\sigma}_\perp^{(0,0)}] \cdot \hat{\mathbf{n}}^{(1,0)} - \hat{\mathbf{t}}^{(1,0)} \cdot [\boldsymbol{\sigma}_\perp^{(0,0)}] \cdot \hat{\mathbf{e}}_z, \quad (\text{B24})$$

for $\mathbf{x} \in \Sigma_I^{(0)}$. The $\mathcal{O}(1)$ disturbance field is given by

$$\mathbf{u}_{\perp,D}^{(0,0)} = \mathbf{u}_\perp^{(0,0)} - \hat{\mathbf{e}}_y = u_{\perp x}^{(0,0)} \hat{\mathbf{e}}_x + (u_{\perp y}^{(0,0)} - 1) \hat{\mathbf{e}}_y, \quad (\text{B25})$$

and the $\mathcal{O}(1)$ and $\mathcal{O}(\text{Ca})$ unit normal and tangential vectors to the fluid interface are

$$\hat{\mathbf{t}}^{(0,0)} = \hat{\mathbf{e}}_x \text{ or } \hat{\mathbf{e}}_y, \quad (\text{B26})$$

$$\hat{\mathbf{n}}^{(1,0)} = -\frac{\partial h_{\perp}^{(1,0)}}{\partial x} \hat{\mathbf{e}}_x - \frac{\partial h_{\perp}^{(1,0)}}{\partial y} \hat{\mathbf{e}}_y, \quad (\text{B27})$$

$$\hat{\mathbf{t}}^{(1,0)} = \frac{\partial h_{\perp}^{(1,0)}}{\partial x} \hat{\mathbf{e}}_z \text{ or } \frac{\partial h_{\perp}^{(1,0)}}{\partial y} \hat{\mathbf{e}}_z. \quad (\text{B28})$$

Substituting Eqs. (B25) - (B28) into Eqs. (B23) and (B24) yields

$$[\boldsymbol{\sigma}_{\perp}^{(0,0)}] \cdot (-\hat{\mathbf{e}}_z) \cdot \mathbf{u}_{\perp,D}^{(1,0)} = [\sigma_{\perp zz}^{(0,0)}] \left(\mathbf{u}_{\perp,D}^{(0,0)} \cdot \hat{\mathbf{n}}^{(1,0)} + \frac{\partial \mathbf{u}_{\perp,D}^{(0,0)}}{\partial z} h_{\perp}^{(1,0)} \cdot \hat{\mathbf{e}}_z \right) \quad (\text{B29})$$

$$= [\sigma_{\perp zz}^{(0,0)}] \left(-u_{\perp x}^{(0,0)} \frac{\partial h_{\perp}^{(1,0)}}{\partial x} - (u_{\perp y}^{(0,0)} - 1) \frac{\partial h_{\perp}^{(1,0)}}{\partial y} + \frac{\partial u_{\perp z}^{(0,0)}}{\partial z} h_{\perp}^{(1,0)} \right), \quad (\text{B30})$$

and

$$[\boldsymbol{\sigma}_{\perp}^{(1,0)}] \cdot (-\hat{\mathbf{e}}_z) \cdot \mathbf{u}_{\perp,D}^{(0,0)} \quad (\text{B31})$$

$$= (-[\sigma_{\perp zx}^{(1,0)}] \hat{\mathbf{e}}_x - [\sigma_{\perp zy}^{(1,0)}] \hat{\mathbf{e}}_y - [\sigma_{\perp zz}^{(1,0)}] \hat{\mathbf{e}}_z) \cdot (u_{\perp x}^{(0,0)} \hat{\mathbf{e}}_x + (u_{\perp y}^{(0,0)} - 1) \hat{\mathbf{e}}_y) \quad (\text{B32})$$

$$= \left(\frac{\partial [\sigma_{\perp zx}^{(0,0)}]}{\partial z} h_{\perp}^{(1,0)} - [\sigma_{\perp xx}^{(0,0)}] \frac{\partial h_{\perp}^{(1,0)}}{\partial x} - [\sigma_{\perp xy}^{(0,0)}] \frac{\partial h_{\perp}^{(1,0)}}{\partial y} + [\sigma_{\perp zz}^{(0,0)}] \frac{\partial h_{\perp}^{(1,0)}}{\partial x} \right) u_{\perp x}^{(0,0)} \quad (\text{B33})$$

$$+ \left(\frac{\partial [\sigma_{\perp zy}^{(0,0)}]}{\partial z} h_{\perp}^{(1,0)} - [\sigma_{\perp yx}^{(0,0)}] \frac{\partial h_{\perp}^{(1,0)}}{\partial x} - [\sigma_{\perp yy}^{(0,0)}] \frac{\partial h_{\perp}^{(1,0)}}{\partial y} + [\sigma_{\perp zz}^{(0,0)}] \frac{\partial h_{\perp}^{(1,0)}}{\partial y} \right) (u_{\perp y}^{(0,0)} - 1). \quad (\text{B34})$$

Similar relations hold for the $\mathcal{O}(\delta)$ variables $((j, k) = (0, 1))$. The interfacial deformations $h^{(1,0)}$ and $h^{(0,1)}$ and their partial derivatives with respect to x and y are obtained via numerical calculations.

Appendix C: Pair interaction: parallel flow

1. Leading order velocity field

The leading order velocity field $\mathbf{u}_{\parallel}^{(0,0)} = u_{\parallel\rho}^{(0,0)}\hat{\mathbf{e}}_{\rho} + u_{\parallel\varphi}^{(0,0)}\hat{\mathbf{e}}_{\varphi} + u_{\parallel y}^{(0,0)}\hat{\mathbf{e}}_y$ obtained from [19] is axisymmetric and can be expressed in terms of the Stokes stream function:

$$u_{\parallel\rho}^{(0,0)} = \frac{1}{\rho} \frac{\partial\psi}{\partial y}, \quad u_{\parallel y}^{(0,0)} = 1 - \frac{1}{\rho} \frac{\partial\psi}{\partial\rho}, \quad (\text{C1})$$

with $x = \rho \cos \varphi, z = r \sin \varphi$. The stream function ψ is given in bicylindrical coordinates (η, ξ, φ) by

$$\psi = (\cosh \xi - \cos \eta)^{-3/2} \sum_{n=1}^{\infty} (A_n \cosh(n-1/2)\xi + C_n \cosh(n+3/2)\xi) (P_{n+1}(\cos \eta) - P_{n+1}(\cos \eta)), \quad (\text{C2})$$

where

$$\rho = \frac{c \sin \eta}{\cosh \xi - \cos \eta}, \quad y = \frac{c \sinh \xi}{\cosh \xi - \cos \eta},$$

$c = \sqrt{(L/2)^2 - 1}$, and P_n is the Legendre polynomial of order n . The coefficients A_n and C_n are given by

$$A_n = -(2n+3)k \frac{2(1 - e^{-(2n+1)\tau_1}) + (2n+1)(e^{2\tau_1} - 1)}{2 \sinh(2n+1)\tau_1 + (2n+1) \sinh 2\tau_1}, \quad (\text{C3})$$

$$C_n = (2n-1)k \frac{2(1 - e^{-(2n+1)\tau_1}) + (2n+1)(1 - e^{-2\tau_1})}{2 \sinh(2n+1)\tau_1 + (2n+1) \sinh 2\tau_1}, \quad (\text{C4})$$

where $\tau_1 = \text{arccosh}(L/2)$ and

$$k = \frac{c^2(-1)n(n+1)}{\sqrt{2}(2n-1)(2n+1)(2n+3)}. \quad (\text{C5})$$

2. Pressure recovery

In section IIIB, to calculate the drag force, we need the leading order jump in normal stress across the fluid interface. The viscous stress jump can be calculated from the solution for $\mathbf{u}_{\parallel}^{(0,0)}$ given by Stimson and Jeffery [19]. They did not give the pressure which we need

to complete the drag calculation. Noting that $p_{\parallel}^{(0,0)}$ is harmonic and that we only need $p_{\parallel}^{(0,0)}$ along the fluid interface. We can identify a PDE for this interfacial pressure by rearranging the pressure equation into a 2D Poisson equation along the interface as

$$\frac{\partial^2 p_{\parallel}^{(0,0)}}{\partial x^2} + \frac{\partial^2 p_{\parallel}^{(0,0)}}{\partial y^2} = - \frac{\partial^2 p_{\parallel}^{(0,0)}}{\partial z^2} \Big|_{z=0}, \quad -\infty < x, y < \infty. \quad (\text{C6})$$

In cylindrical coordinates (ρ, φ, y) with $x = \rho \cos \varphi$ and $z = \rho \sin \varphi$, the RHS term in Eq. (C6) can be rewritten as

$$- \frac{\partial^2 p_{\parallel}^{(0,0)}}{\partial z^2} \Big|_{z=0} = - \left(\frac{\partial^2 \rho}{\partial z^2} \frac{\partial^2 p_{\parallel}^{(0,0)}}{\partial \rho^2} + \left(\frac{\partial \rho}{\partial z} \frac{\partial}{\partial \rho} \frac{\partial \rho}{\partial z} + \frac{\partial \varphi}{\partial z} \frac{\partial}{\partial \varphi} \right) \frac{\partial p_{\parallel}^{(0,0)}}{\partial \rho} \right) \Big|_{\varphi=0, \pi} \quad (\text{C7})$$

$$= - \left(\sin^2 \varphi \frac{\partial^2 p_{\parallel}^{(0,0)}}{\partial \rho^2} + \frac{\cos^2 \varphi}{\rho} \frac{\partial p_{\parallel}^{(0,0)}}{\partial \rho} \right) \Big|_{\varphi=0, \pi} \quad (\text{C8})$$

$$= - \frac{1}{\rho} \frac{\partial p_{\parallel}^{(0,0)}}{\partial \rho} \Big|_{\varphi=0, \pi} = - \frac{1}{x} \frac{\partial p_{\parallel}^{(0,0)}}{\partial x}, \quad (\text{C9})$$

where $\partial p_{\parallel}^{(0,0)} / \partial \varphi = 0$ due to axisymmetry. Then, Eq. (C6) becomes

$$\frac{\partial^2 \tilde{p}_{\parallel}}{\partial x^2} + \frac{\partial^2 \tilde{p}_{\parallel}}{\partial y^2} = - \frac{1}{x} \frac{\partial \tilde{p}_{\parallel}}{\partial x}. \quad (\text{C10})$$

Note that $p_{\parallel}^{(0,0)}$ also satisfies the $\hat{\mathbf{e}}_{\rho}$ component of the momentum equation

$$\frac{\partial p_{\parallel}^{(0,0)}}{\partial \rho} = \frac{\partial^2 u_{\parallel \rho}^{(0,0)}}{\partial \rho^2} + \frac{1}{\rho} \frac{\partial u_{\parallel \rho}^{(0,0)}}{\partial \rho} + \frac{\partial^2 u_{\parallel \rho}^{(0,0)}}{\partial y^2} - \frac{u_{\parallel \rho}^{(0,0)}}{\rho^2}. \quad (\text{C11})$$

At the fluid interface, Eq. (C11) can be rewritten as

$$\frac{\partial p_{\parallel}^{(0,0)}}{\partial x} = \frac{\partial^2 u_{\parallel x}^{(0,0)}}{\partial x^2} + \frac{1}{x} \frac{\partial u_{\parallel x}^{(0,0)}}{\partial x} + \frac{\partial^2 u_{\parallel x}^{(0,0)}}{\partial y^2} - \frac{u_{\parallel x}^{(0,0)}}{x^2}, \quad (\text{C12})$$

where $u_{\parallel x}^{(0,0)} = u_{\parallel \rho}^{(0,0)} \cos \varphi = \pm u_{\parallel \rho}^{(0,0)}$ at $z = 0$. Substituting Eq. (C12) into Eq. (C10) yields

$$\frac{\partial^2 \tilde{p}_{\parallel}}{\partial x^2} + \frac{\partial^2 \tilde{p}_{\parallel}}{\partial y^2} = - \frac{1}{x} \left(\frac{\partial^2 u_{\parallel x}^{(0,0)}}{\partial x^2} + \frac{1}{x} \frac{\partial u_{\parallel x}^{(0,0)}}{\partial x} + \frac{\partial^2 u_{\parallel x}^{(0,0)}}{\partial y^2} - \frac{u_{\parallel x}^{(0,0)}}{x^2} \right). \quad (\text{C13})$$

Appendix D: Capillary force calculation: perpendicular flow

The capillary unit vectors at the TCLs on the surfaces of particle I and II can be written as

$$\begin{aligned} \tilde{\mathbf{n}}_{C,\perp}^{\text{I,II}} = \tilde{\mathbf{t}}_{C,\perp}^{\text{I,II}} \times \hat{\mathbf{n}}_{\perp} = \pm \left[\frac{-1 + \cos \sigma \cosh \tau_1}{\cos \sigma - \cosh \tau_1} \hat{\mathbf{e}}_x + \frac{\sin \sigma \sinh(\mp \tau_1)}{\cos \sigma - \cosh \tau_1} \hat{\mathbf{e}}_y \right. \\ \left. + \frac{-\cos \sigma + \cosh \tau_1}{c} \left(\text{Ca} \frac{\partial h^{(1,0)}}{\partial \tau} + \delta \frac{\partial h^{(0,1)}}{\partial \tau} \right) \hat{\mathbf{e}}_z \right], \end{aligned} \quad (\text{D1})$$

where

$$\begin{aligned} \tilde{\mathbf{t}}_{C,\perp}^{\text{I,II}} = \mp \frac{\partial \mathbf{r}_{C,\perp}^{\text{I,II}} / \partial \sigma}{\left| \partial \mathbf{r}_{C,\perp}^{\text{I,II}} / \partial \sigma \right|} = \pm \left[\frac{\sin \sigma \sinh \tau_1}{\cos \sigma - \cosh \tau_1} \hat{\mathbf{e}}_x + \frac{1 - \cos \sigma \cosh \tau_1}{\cos \sigma - \cosh \tau_1} \hat{\mathbf{e}}_y \right. \\ \left. + \frac{\cos \sigma - \cosh \tau_1}{c} \left(\text{Ca} \frac{\partial h^{(1,0)}}{\partial \sigma}(\mp \tau_1, \sigma) + \delta \frac{\partial h^{(0,1)}}{\partial \sigma}(\mp \tau_1, \sigma) \right) \right] \end{aligned} \quad (\text{D2})$$

are the unit tangent vectors to the TCLs, and

$$\begin{aligned} \hat{\mathbf{n}}_{\perp}^{\text{I,II}} = \hat{\mathbf{e}}_z + \frac{1}{c} \left((-1 + \cos \sigma \cosh \tau_1) \left(\text{Ca} \frac{\partial h^{(1,0)}}{\partial \tau} + \delta \frac{\partial h^{(0,1)}}{\partial \tau} \right) \right. \\ \left. + \sin \sigma \sinh(\mp \tau_1) \left(\text{Ca} \frac{\partial h^{(1,0)}}{\partial \sigma} + \delta \frac{\partial h^{(0,1)}}{\partial \sigma} \right) \right) \hat{\mathbf{e}}_x \\ + \frac{1}{c} \left((1 - \cos \sigma \cosh \tau_1) \left(\text{Ca} \frac{\partial h^{(1,0)}}{\partial \sigma} + \delta \frac{\partial h^{(0,1)}}{\partial \sigma} \right) \right. \\ \left. + \sin \sigma \sinh(\mp \tau_1) \left(\text{Ca} \frac{\partial h^{(1,0)}}{\partial \tau} + \delta \frac{\partial h^{(0,1)}}{\partial \tau} \right) \right) \hat{\mathbf{e}}_y \end{aligned} \quad (\text{D3})$$

are the unit normal vectors to the interface (the expansions are truncated after the $\mathcal{O}(\text{Ca})$ and $\mathcal{O}(\delta)$ terms). Then, the capillary forces are computed to be

$$\begin{aligned} \mathbf{F}_C^{\text{I,II}} = \int_{-\pi}^{\pi} \tilde{\mathbf{n}}_{C,\perp}^{\text{I,II}} \frac{c \, d\sigma}{\cosh \tau_1 - \cos \sigma} \\ = \pm \int_{-\pi}^{\pi} \text{Ca} \frac{\partial h_{\perp}^{(1,0)}}{\partial \tau}(\mp \tau_1, \sigma) + \delta \frac{\partial h_{\perp}^{(0,1)}}{\partial \tau}(\mp \tau_1, \sigma) \, d\sigma \hat{\mathbf{e}}_z, \end{aligned} \quad (\text{D4})$$

and clearly, $\mathbf{F}_C^I = \mathbf{F}_C^{II} = \mathbf{F}_C$.

- [1] L. G. Leal, Particle motions in a viscous fluid, *Annual review of fluid mechanics* **12**, 435 (1980).
- [2] C. Maldarelli, N. T. Donovan, S. C. Ganesh, S. Das, and J. Koplik, Continuum and molecular dynamics studies of the hydrodynamics of colloids straddling a fluid interface, *Annual review of fluid mechanics* **54**, 495 (2022).
- [3] B. P. Binks and T. S. Horozov, *Colloidal particles at liquid interfaces* (Cambridge University Press, Cambridge, 2006).
- [4] Y. Hu, P. M. Vlahovska, and M. J. Miksis, Electrohydrodynamic assembly of colloidal particles on a drop interface, *Mathematical biosciences and engineering* **18**, 2357 (2021).
- [5] M. Zabarankin, Asymmetric three-dimensional stokes flows about two fused equal spheres, *Proceedings of the Royal Society. A, Mathematical, physical, and engineering sciences* **463**, 2329 (2007).
- [6] A. Dani, G. Keiser, M. Yeganeh, and C. Maldarelli, Hydrodynamics of particles at an oilwater interface, *Langmuir* **31**, 13290 (2015).
- [7] A. Drr, S. Hardt, H. Masoud, and H. A. Stone, Drag and diffusion coefficients of a spherical particle attached to a fluidfluid interface, *Journal of fluid mechanics* **790**, 607 (2016).
- [8] A. Drr and S. Hardt, Driven particles at fluid interfaces acting as capillary dipoles, *Journal of fluid mechanics* **770**, 5 (2015).
- [9] K. Danov, R. Aust, F. Durst, and U. Lange, Influence of the surface viscosity on the hydrodynamic resistance and surface diffusivity of a large brownian particle, *Journal of colloid and interface science* **175**, 36 (1995).
- [10] S. Das, J. Koplik, R. Farinato, D. R. Nagaraj, C. Maldarelli, and P. Somasundaran, The translational and rotational dynamics of a colloid moving along the air-liquid interface of a thin film, *Scientific reports* **8**, 8910 (2018).
- [11] K. D. Danov, R. Dimova, and B. Pouligny, Viscous drag of a solid sphere straddling a spherical or flat surface, *Physics of fluids* (1994) **12**, 2711 (2000).
- [12] C. Pozrikidis, Particle motion near and inside an interface, *Journal of fluid mechanics* **575**, 333 (2007).

- [13] J. C. Loudet, M. Qiu, J. Hemaue, and J. J. Feng, Drag force on a particle straddling a fluid interface: Influence of interfacial deformations, *The European physical journal. E, Soft matter and biological physics* **43**, 13 (2020).
- [14] J. Hemaue, M. Qiu, J. J. Feng, and J.-C. Loudet, Particle rotation speeds up capillary interactions, *The European physical journal. E, Soft matter and biological physics* **44**, 30 (2021).
- [15] K. D. Danov and P. A. Kralchevsky, Capillary forces between particles at a liquid interface: General theoretical approach and interactions between capillary multipoles, *Advances in colloid and interface science* **154**, 91 (2010).
- [16] P. A. Kralchevsky and K. Nagayama, Capillary interactions between particles bound to interfaces, liquid films and biomembranes, *Advances in colloid and interface science* **85**, 145 (2000).
- [17] L. G. Leal, *Advanced Transport Phenomena: Fluid Mechanics and Convective Transport Processes.*, Cambridge series in chemical engineering; v.7 (Cambridge University Press, Leiden, 2010).
- [18] Z. Zhou, *Drag force on particles at a fluid interface in creeping flows*, Ph.D. thesis, Northwestern University (2022).
- [19] M. Stimson and G. B. Jeffery, The motion of two spheres in a viscous fluid, *Proceedings of the Royal Society of London. Series A, Containing papers of a mathematical and physical character* **111**, 110 (1926).
- [20] A. Goldman, R. Cox, and H. Brenner, The slow motion of two identical arbitrarily oriented spheres through a viscous fluid, *Chemical engineering science* **21**, 1151 (1966).
- [21] D. Vella and L. Mahadevan, The cheerios effect, *American journal of physics* **73**, 817 (2005).
- [22] D. Chan, J. Henry, and L. White, The interaction of colloidal particles collected at fluid interfaces, *Journal of colloid and interface science* **79**, 410 (1981).
- [23] P. A. Kralchevsky and K. Nagayama, Capillary forces between colloidal particles, *Langmuir* **10**, 23 (1994).
- [24] M. M. Nicolson, The interaction between floating particles, *Mathematical proceedings of the Cambridge Philosophical Society* **45**, 288 (1949).
- [25] J. T. Petkov, N. D. Denkov, K. D. Danov, O. D. Velev, R. Aust, and F. Durst, Measurement of the drag coefficient of spherical particles attached to fluid interfaces, *Journal of colloid and*

- interface science **172**, 147 (1995).
- [26] P. Kralchevsky, V. Paunov, I. Ivanov, and K. Nagayama, Capillary meniscus interaction between colloidal particles attached to a liquidfluid interface, *Journal of colloid and interface science* **151**, 79 (1992).
 - [27] A. J. McConnell, *Application of tensor analysis*. (Dover Publications, New York, 1957).
 - [28] H. Luo and C. Pozrikidis, Effect of surface slip on stokes flow past a spherical particle in infinite fluid and near a plane wall, *Journal of engineering mathematics* **62**, 1 (2007).
 - [29] M. E. O'Neill, K. B. Ranger, and H. Brenner, Slip at the surface of a translatingrotating sphere bisected by a free surface bounding a semiinfinite viscous fluid: Removal of the contactline singularity, *The Physics of fluids* (1958) **29**, 913 (1986).