



CHORUS

This is the accepted manuscript made available via CHORUS. The article has been published as:

Thermal transport in MoS₂ from molecular dynamics using different empirical potentials

Ke Xu, Alexander J. Gabourie, Arsalan Hashemi, Zheyong Fan, Ning Wei, Amir Barati Farimani, Hannu-Pekka Komsa, Arkady V. Krasheninnikov, Eric Pop, and Tapio Ala-Nissila

Phys. Rev. B **99**, 054303 — Published 11 February 2019

DOI: [10.1103/PhysRevB.99.054303](https://doi.org/10.1103/PhysRevB.99.054303)

Thermal Transport in MoS₂ from Molecular Dynamics using Different Empirical Potentials

Ke Xu,¹ Alexander J. Gabourie,^{2,*} Arsalan Hashemi,^{3,†} Zheyong Fan,^{4,5,‡} Ning Wei,^{1,§} Amir Barati Farimani,⁶ Hannu-Pekka Komsa,³ Arkady V. Krasheninnikov,^{3,7} Eric Pop,² and Tapio Ala-Nissila^{5,8}

¹*Jiangsu Key Laboratory of Advanced Food Manufacturing Equipment and Technology, Jiangnan University, 214122 Wuxi, China*

²*Department of Electrical Engineering, Stanford University, Stanford, CA 94305, USA*

³*Department of Applied Physics, Aalto University, FI-00076 Aalto, Finland*

⁴*School of Mathematics and Physics, Bohai University, Jinzhou, China*

⁵*QTF Centre of Excellence, Department of Applied Physics, Aalto University, FI-00076 Aalto, Finland*

⁶*Mechanical Engineering Department, Carnegie Mellon University, 5000 Forbes Avenue, Scaife Hall 310, Pittsburgh, PA 15213*

⁷*Institute of Ion Beam Physics and Materials Research,*

Helmholtz-Zentrum Dresden-Rossendorf, 01328 Dresden, Germany

⁸*Centre for Interdisciplinary Mathematical Modeling and Department of Mathematical Sciences, Loughborough University, Loughborough, Leicestershire LE11 3TU, UK*

(Dated: January 24, 2019)

Thermal properties of molybdenum disulfide (MoS₂) have recently attracted attention related to fundamentals of heat propagation in strongly anisotropic materials, and in the context of potential applications to optoelectronics and thermoelectrics. Multiple empirical potentials have been developed for classical molecular dynamics (MD) simulations of this material, but it has been unclear which provides the most realistic results. Here, we calculate lattice thermal conductivity of single- and multi-layer pristine MoS₂ by employing three different thermal transport MD methods: equilibrium, nonequilibrium, and homogeneous nonequilibrium ones. We mainly use the Graphics Processing Units Molecular Dynamics (GPUMD) code for numerical calculations, and the Large-scale Atomic/Molecular Massively Parallel Simulator (LAMMPS) code for crosschecks. Using different methods and computer codes allows us to verify the consistency of our results and facilitate comparisons with previous studies, where different schemes have been adopted. Our results using variants of the Stillinger-Weber potential are at odds with some previous ones and we analyze the possible origins of the discrepancies in detail. We show that, among the potentials considered here, the reactive empirical bond order (REBO) potential gives the most reasonable predictions of thermal transport properties as compared to experimental data. With the REBO potential, we further find that isotope scattering has only a small effect on thermal conduction in MoS₂ and the in-plane thermal conductivity decreases with increasing layer number and saturates beyond about three layers. We identify the REBO potential as a transferable empirical potential for MD simulations of MoS₂ which can be used to study thermal transport properties in more complicated situations such as in systems containing defects or engineered nanoscale features. This work establishes a firm foundation for understanding heat transport properties of MoS₂ using MD simulations.

I. INTRODUCTION

Atomically thin molybdenum disulfide (MoS₂) is a layered material which has attracted enormous interest due to its electronic and optical properties¹⁻³. In electronic device applications such as transistors based on MoS₂, device self-heating⁴ could limit the saturation velocity, which ultimately limits device performance⁵. On the other hand, the large, tunable Seebeck coefficient (thermopower)⁶ and power factor⁷ of MoS₂ make it a promising candidate for thermoelectric applications. Knowledge of the thermal transport properties of MoS₂ is crucial in both types of applications.

There have been several studies of thermal transport properties of MoS₂ both experimentally⁸⁻¹⁸ and theoretically¹⁹⁻²⁶. Experimentally, the measured in-plane thermal conductivity values in bulk natural crystal are about 100 W m⁻¹ K⁻¹¹⁹⁻¹¹, while those in exfoliated or synthesized single- and multi-layer MoS₂ are typically

lower¹²⁻¹⁸, varying from 13.3 ± 1.4 to 84 ± 17 W m⁻¹ K⁻¹. The measured through-plane thermal conductivity values in bulk MoS₂ are more than one order of magnitude smaller⁸⁻¹¹, ranging from 2.0 ± 0.3 to 4.75 ± 0.32 W m⁻¹ K⁻¹. Theoretically, Li *et al.*¹⁹ first calculated the in-plane thermal conductivity of single-layer MoS₂ using the Boltzmann transport equation (BTE), with the third-order anharmonic force constants obtained from quantum mechanical density functional theory (DFT) calculations. The thermal conductivity of naturally occurring MoS₂ was calculated to be about 108 W m⁻¹ K⁻¹ for a 10-μm-long sample¹⁹. Using similar method, Gu *et al.*²⁰ found that the in-plane thermal conductivity of 10-μm-long samples in layered, naturally occurring MoS₂ monotonically reduces from 138 W m⁻¹ K⁻¹ to 98 W m⁻¹ K⁻¹ when the thickness increases from one to three layers.

While the BTE approach is widely used in predicting the thermal conductivity of materials, and a handful

of computer codes^{27–31} are available for the calculations, the method has its limitations. First, it is based on perturbation theory and it is usually assumed that fourth- and higher-order phonon-phonon interactions are unimportant, which is not valid at high temperatures. Second, since the computational cost of the BTE approach increases rapidly with the supercell size, it is impractical for studying spatially complex structures such as those with defects, grain boundaries or engineered nanostructures.

The above limitations for the BTE approach can be overcome by classical molecular dynamics (MD) methods, which are nonperturbative and scale linearly with the simulation cell size. Nevertheless, predictions from classical MD simulations are sensitive to the empirical potential used. A few works^{23–26} have employed MD simulations to study heat transport in suspended MoS₂, using the Stillinger-Weber (SW) potential³² modified and parameterized by Jiang *et al.*³³ or Kandemir *et al.*²⁵. While many insights have been gained from previous MD simulations^{23–26}, there is an apparent inconsistency between two types of thermal conductivity calculations, namely the equilibrium (Green-Kubo) and nonequilibrium methods, that has not been resolved. Using nonequilibrium MD simulations and the potential by Jiang *et al.*³³, Ding *et al.*²³ obtained an in-plane thermal conductivity of $\kappa = 19.76 \text{ W m}^{-1} \text{ K}^{-1}$ for pristine single-layer MoS₂, but a very different value of $\kappa = 116.8 \text{ W m}^{-1} \text{ K}^{-1}$ has been obtained by Jin *et al.*²⁴ using the equilibrium method with the same potential. Because the equivalence between the equilibrium and the nonequilibrium MD methods is well established both theoretically and in properly executed MD simulations³⁴, it is imperative to examine this inconsistency in detail for the present case.

On the other hand, MoS₂ is widely used as a solid lubricant³⁵ and a sophisticated empirical potential based on the proven framework of the Abell-Tersoff-Brenner potentials^{36–38} has already been developed by Liang *et al.*^{39,40} to simulate friction between MoS₂ layers. To our knowledge the potential by Liang *et al.* has only been used for heat transport applications in Ref.⁴¹ and there is, so far, no detailed comparison between the above-mentioned potentials regarding thermal transport. In view of the importance of the quality of the empirical potential in MD simulations, it is of great interest to evaluate these potentials through a careful comparison of the simulation results to the available experimental data.

To this end, we study here heat transport in single-layer, multi-layer, and bulk MoS₂ using extensive MD simulations. Apart from the equilibrium and nonequilibrium MD methods mentioned above, we used an efficient homogeneous nonequilibrium MD method^{42,43}, recently generalized⁴⁴ to many-body potentials. All methods were implemented in the Graphics Processing Units Molecular Dynamics (GPUMD) code^{45–47}, which is the main computer code we used for this work. For crosscheck pur-

poses, we also used the Large-scale Atomic/Molecular Massively Parallel Simulator (LAMMPS) code^{48,49}, in which only the equilibrium and nonequilibrium MD methods are available. First, we examine the consistency between various MD based methods for heat transport and compare our results closely with previous works^{23–26}. Then, we benchmark our MD results against the available experimental data^{8–18}, evaluating the performance of the empirical potentials we considered and rationalizing the theoretical and experimental results. This work establishes a firm foundation for understanding heat transport properties of MoS₂ using MD simulations.

This paper is organized as follows: Section II A introduces the simulation model of this work, which we base the discussion of the various empirical potentials on in Sec. II B. In Sec. II C, we introduce three different MD methods for thermal conductivity calculations. After presenting our thermal conductivity calculation results for single-layer MoS₂ in Sec. III A, we make detailed comparisons with previous MD works in Sec. III B. In Sec. III C, we evaluate the performance of empirical potentials from various perspectives and compare our MD results to experimental data. Section IV summarizes and concludes our work.

II. MODELS AND METHODS

A. Atomistic model of molybdenum disulfide

Figure 1 shows the atomistic structure of a multi-layer MoS₂ system in the trigonal prismatic H phase with hexagonal symmetry. Each layer of MoS₂ consists of a Mo sublayer in the middle sandwiched by two S sublayers. The in-plane lattice constant is³⁵ $a \approx 3.16 \text{ \AA}$, which is the equilibrium nearest neighbor Mo-Mo (or S-S) distance. The intralayer distance of the S sublayers is $c_1 \approx 3.24 \text{ \AA}$ and the nearest interlayer distance of the S sublayers is $c_2 \approx 2.90 \text{ \AA}$. In single layers, each Mo atom with trigonal prismatic coordination links to the six nearest S atoms. The equilibrium Mo-S bond length is $d \approx 2.42 \text{ \AA}$. For two-dimensional materials, the thickness must be specified to calculate the effective system volume needed for calculating the effective thermal conductivity in three dimensions. In this work, we follow the convention in literature to set the thickness of n -layer MoS₂ to $6.15 \times n \text{ \AA}$.

B. Empirical interatomic potentials for molybdenum disulfide

We consider multiple, widely used empirical interatomic potentials for MD simulations of MoS₂^{25,33,39,40,50}. We implement all the potentials in the open source GPUMD package^{45–47} and confirm that GPUMD and the LAMMPS package^{48,49} give consistent forces for all potentials. For the LAMMPS code, we have

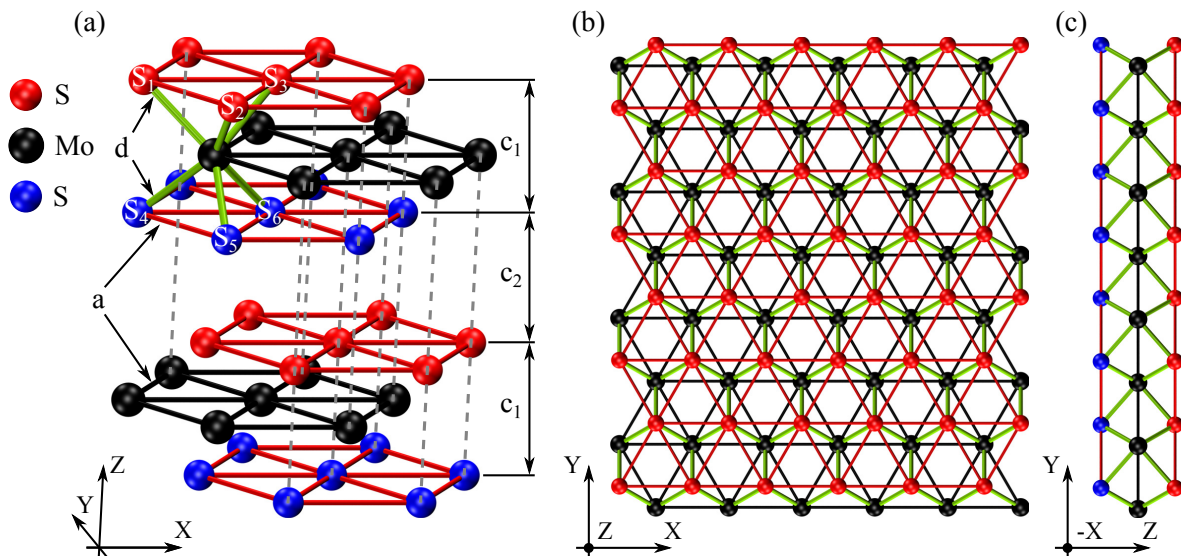


FIG. 1. A schematic illustration of the atomistic structure of multi-layer MoS₂ in the trigonal prismatic H phase. For simplicity, a two-layer system is shown in (a). Each layer of MoS₂ consists of three sublayers, including a middle Mo sublayer (in black), a top S sublayer (in red), and a bottom S sublayer (in blue). The shortest Mo-Mo pairs (in black), S-S pairs (in red), and Mo-S bonds (in green) have equilibrium distances a , a , and d , respectively. The intralayer and interlayer distances of two S sublayers are shown by c_1 and c_2 , respectively. (b) Single-layer MoS₂ viewed from the top. There is a zigzag-shaped edge in the x direction and an armchair-shaped edge in the y direction. (c) A side view for single-layer MoS₂. Experimental values are³⁵: $a \approx 3.16$ Å, $d \approx 2.42$ Å, $c_1 \approx 3.24$ Å, $c_2 \approx 2.90$ Å.

used the 16-Mar-2018 release. For the GPUMD code, all the calculations can be performed using GPUMD-v1.8 or newer.

1. REBO-LJ potential for Mo-S systems

Liang *et al.*^{39,40} developed a potential in 2009 combining a REBO (reactive empirical bond-order) potential (a version of the Abell-Tersoff-Brenner potentials³⁶⁻³⁸) and a Lennard-Jones (LJ) potential for Mo-S systems. We call it the REBO-LJ potential from here on. Stewart and Spearot⁵⁰ have slightly modified this potential and made an open source implementation⁵¹ within LAMMPS. Here we present the version by Stewart and Spearot⁵⁰.

For the REBO part, the total potential energy U of the system can be written as a sum of the site potentials U_i :

$$U = \sum_i U_i. \quad (1)$$

The site potential takes the form:

$$U_i = \frac{1}{2} \sum_{j \neq i} f_C(r_{ij}) [f_R(r_{ij}) - b_{ij} f_A(r_{ij})], \quad (2)$$

where $f_C(r_{ij})$ is the Tersoff cutoff function³⁷, $f_A(r_{ij})$ and $f_R(r_{ij})$ are respectively the attractive and the repulsive functions. The bond order function b_{ij} is

$$b_{ij} = (1 + \zeta_{ij})^{-1/2}, \quad (3)$$

where

$$\zeta_{ij} = \sum_{k \neq i, j} f_C(r_{ik}) g(\cos \theta_{ijk}) + P(N_i). \quad (4)$$

Here, g is an analytical function of the bond angle θ_{ijk} formed by the ij and ik bonds, and P is an analytical function of the coordination number N_i defined as⁵⁰

$$N_i = \sum_{j \neq i} f_C(r_{ij}). \quad (5)$$

Apart from the REBO part, a nonbonded LJ potential is also included to account for the van der Waals interactions. A cubic spline is constructed to smoothly reduce the LJ potential to zero at the inner cutoff distance of the REBO part.

All material-specific parameters can be found in Ref. 50. The Lennard-Jones parameter ϵ for the S-S pair is set to 0.01386 eV in Ref. 50 and to 0.020 eV in Refs. 40. We choose the value in Refs. 40 because it is motivated by room temperature (300 K) applications whereas Ref. 50 was motivated by zero temperature applications.

2. Original SW potential

Before introducing the SW potentials for MoS₂, we review the original SW potential proposed in 1985³². The total potential energy for the SW potential consists of a

two-body part and a three-body part. The site potential is

$$U_i = \frac{1}{2} \sum_{j \neq i} V_2(r_{ij}) + \frac{1}{2} \sum_{j \neq i} \sum_{k \neq i, j} h_{ijk}, \quad (6)$$

where

$$V_2(r_{ij}) = A_{ij} \epsilon_{ij} \left[B_{ij} \left(\frac{\sigma_{ij}}{r_{ij}} \right)^4 - 1 \right] \times \exp \left(\frac{1}{r_{ij}/\sigma_{ij} - a_{ij}} \right) \quad (7)$$

and

$$h_{ijk} = \epsilon_{ij} \lambda_{ijk} \exp \left[\frac{\gamma_{ij}}{r_{ij}/\sigma_{ij} - a_{ij}} + \frac{\gamma_{ik}}{r_{ik}/\sigma_{ik} - a_{ik}} \right] \times (\cos \theta_{ijk} - \cos \theta_{0ijk})^2. \quad (8)$$

Here, A_{ij} , B_{ij} , ϵ_{ij} , σ_{ij} , a_{ij} , λ_{ijk} , γ_{ij} , and $\cos \theta_{0ijk}$ are material-specific parameters. Parameters with two indices depend on a pair of atoms i and j (sometimes i and k); parameters with three indices depend on a triplet ijk of atoms i , j , and k , where i is the central atom of the triplet. The parameter ϵ_{ij} is redundant and can be absorbed into A_{ij} and λ_{ijk} . For each pair of atom types, there is a cutoff $\sigma_{ij} a_{ij}$ for the interactions.

3. SW13 and SW13E potentials for molybdenum disulfide

Jiang *et al.*³³ developed an SW potential in 2013 based on the standard SW potential and an extra requirement that there is no interaction in Mo-S-S triplets where the S-S distance is larger than the cutoff distance of 3.78 Å for the S-S pairs (such as the Mo-S₁-S₅ triplet in Fig. 1). The cutoff distance for the three-body part only extends to nearest neighbors (i.e., excluding Mo-Mo and S-S-S triplets), while that for the two-body part extends to next nearest neighbors (i.e., including Mo-S, Mo-Mo, and S-S pairs). However, the source code provided by Jiang *et al.* (the file tagged with `pair_sw.cpp` in the supplementary material of Ref. 33) is incorrectly implemented such that all the three-body interactions are excluded. It is likely that this incorrect implementation has been used in some previous works on MoS₂. We call the potential as described in Ref. 33 (i.e, with the error in the source code fixed) the SW13 potential and that with the error in the source code unfixed the SW13E potential. All the material-specific parameters can be found in Ref. 33.

4. SW16 potential for molybdenum disulfide

Kandemir *et al.*²⁵ developed another SW potential for MoS₂ in 2016, which we call the SW16 potential. This

potential differs from the SW13 potential in that the Mo-S-S three-body interaction, for the case where the two S atoms are in the same sublayer (such as the Mo-S₁-S₂ triplet in Fig. 1), is taken to be different from the case where the two S atoms are in different sublayers (such as the Mo-S₁-S₄ triplet in Fig. 1). Similar to SW13, interactions in triplets such as Mo-S₁-S₅ in Fig. 1 are excluded. All the material-specific parameters can be found in Ref. 25.

5. Time steps for integration

By testing energy conservation in the NVE ensemble, we determined that a time step of 1.0 fs is sufficiently small for the SW potentials but too large for the REBO-LJ potential, which requires a time step of 0.5 fs to achieve good energy conservation. The need for a smaller time step for the REBO potential originates from the Tersoff-like cutoff function adopted in the REBO-LJ potential, which is only continuous up to the first derivative.

C. Methods for thermal conductivity calculations

There are multiple MD-based methods for heat transport calculations, including the equilibrium MD (EMD) method which is based on a Green-Kubo relation⁴³ and the nonequilibrium MD (NEMD) method which is based directly on Fourier's law of heat conduction. When the simulation parameters (e.g. system size, simulation time, linear response) are properly chosen the two methods above are guaranteed to give consistent thermal conductivity results³⁴ in the diffusive regime. Additionally, there is a homogeneous nonequilibrium MD (HNEMD) method^{42,43} which has been recently generalized⁴⁴ such that it works for general many-body potentials, including the REBO and SW potentials considered in this work. When studying diffusive transport, the HNEMD and NEMD methods are the most and least computationally efficient, respectively⁵². The HNEMD method is superior to the EMD and NEMD methods in terms of computational efficiency only, not in terms of the actual calculated thermal conductivity values or physical insight. When used properly, all the three methods give consistent thermal conductivity values in the diffusive limit^{34,44,52-54}. More physical insight regarding the heat transport can be gained by decomposing the total thermal conductivity into a single-particle component and a collective one, as discussed in Ref. 55 in terms of the EMD method, but this decomposition is not the focus in our current study and we thus do not consider it. In this work, we mainly use the HNEMD method, but also employ the other two methods to crosscheck some results. We briefly review these methods below.

1. The HNEMD method

In this method, the system is driven out of equilibrium by an external force⁴⁴:

$$\mathbf{F}_i^{\text{ext}} = E_i \mathbf{F}_e + \sum_{j \neq i} \left(\frac{\partial U_j}{\partial \mathbf{r}_{ji}} \otimes \mathbf{r}_{ij} \right) \cdot \mathbf{F}_e, \quad (9)$$

where $\mathbf{r}_{ij} = \mathbf{r}_j - \mathbf{r}_i$, \mathbf{r}_i being the position of particle i , E_i is the total energy of atom i and \otimes denotes tensor product. When the parameter \mathbf{F}_e (of dimension inverse length) is small enough such that the system is in the linear response regime, a nonequilibrium heat current $\langle \mathbf{J} \rangle_{\text{ne}}$, which is linear in \mathbf{F}_e , will be induced. The linear relation between them can be expressed as

$$\frac{\langle J^\mu(t) \rangle_{\text{ne}}}{TV} = \sum_\nu \kappa^{\mu\nu}(t) F_e^\nu, \quad (10)$$

where T is the system temperature, V is the system volume and $\kappa^{\mu\nu}$ is the thermal conductivity tensor. For a many-body potential, the heat current \mathbf{J} is given by⁵⁶

$$\mathbf{J} = \sum_i \mathbf{v}_i E_i + \sum_i \sum_{j \neq i} \mathbf{r}_{ij} \left(\frac{\partial U_j}{\partial \mathbf{r}_{ji}} \cdot \mathbf{v}_i \right). \quad (11)$$

Due to the hexagonal symmetry, the in-plane heat transport in MoS₂ is essentially isotropic. In this case, the in-plane thermal conductivity tensor reduces to a scalar κ and can be expressed as

$$\kappa(t) = \frac{\langle J(t) \rangle_{\text{ne}}}{TV F_e}. \quad (12)$$

In practice, we redefine $\kappa(t)$ as the cumulative average of the above quantity⁴⁴:

$$\kappa(t) = \frac{1}{t} \int_0^t \frac{\langle J(s) \rangle_{\text{ne}}}{TV F_e} ds, \quad (13)$$

and check how $\kappa(t)$ converges. More theoretical and technical details for the HNEMD method can be found from Ref. 44.

The simulation protocol in the HNEMD method is as follows. First, we equilibrate the system for 1 ns in the NPT ensemble with a target temperature of 300 K and a target in-plane pressure of zero. Second, we make a production run in the NVT ensemble (realized by using the Nosé-Hoover chain thermostat⁵⁷), measuring and outputting the average heat current for every 1000 steps. As we will see, the thermal conductivities we calculate using the SW potentials are much larger than what we calculate using the REBO-LJ potential. Therefore, the production time for the SW potentials also needs to be much larger. We use a production time of 2 ns for the REBO-LJ potential and a production time of 15 ns for the SW potentials. Accordingly, the driving force parameter F_e needs to be smaller for the SW potentials.

With some tests, we determined the following appropriate parameters: $F_e = 0.2 \mu\text{m}^{-1}$ for the REBO-LJ potential and $0.05 \mu\text{m}^{-1}$ for the SW potentials. Last, as this method has small finite-size effects (because there is no boundary scattering), a relatively small simulation cell with periodic boundary conditions in the xy plane can be used. In the Appendix, we show that a simulation cell of size $24 \times 24 \text{ nm}^2$ ($N = 20250$ atoms) is large enough to eliminate the finite-size effects in the HNEMD simulations. The same conclusion applies to the EMD method introduced below. In all our HNEMD and EMD simulations discussed in the main text, we used a $32 \times 32 \text{ nm}^2$ simulation cell ($N = 36000$ atoms). We performed 10 independent runs and calculated the error bounds in terms of the standard error (standard deviation divided by the square root of the number of independent runs).

2. The EMD method

In the EMD method, one first calculates the ensemble (time) average $\langle \dots \rangle$ of the heat current autocorrelation function $\langle J(t)J(0) \rangle$ and then performs a numerical integration to get the (running) thermal conductivity $\kappa(t)$ according to the following Green-Kubo relation^{43,57}:

$$\kappa(t) = \frac{1}{k_B T^2 V} \int_0^t dt' \langle J(t')J(0) \rangle, \quad (14)$$

where $k_B T$ is the thermal energy and V is the volume of the system. In practice, one needs to check the time convergence of the running thermal conductivity. This is called the EMD method because the heat current here is sampled in equilibrium state (in the NVE ensemble).

We only used the EMD method to crosscheck some results obtained by using the SW potentials. The simulation protocol is as follows. First, we equilibrate the system for 1 ns in the NPT ensemble with a target temperature of 300 K and a target in-plane pressure of zero. Second, we make a production run of 50 ns in the NVE ensemble, sampling the instant heat current every 10 steps. Third, we calculate the heat current autocorrelation function using the saved heat current data and then calculate the running thermal conductivity according to the Green-Kubo relation Eq. (14). We performed 50 to 100 independent runs and calculated the error bounds in terms of the standard error.

3. The NEMD method

The NEMD method can be used to calculate the thermal conductivity $\kappa(L)$ of systems with finite length L according to Fourier's law:

$$\kappa(L) = \frac{Q}{|\nabla T|}, \quad (15)$$

where Q is an externally generated heat flux and ∇T is the resulting temperature gradient in steady state. There

are many flavors of the NEMD method and we chose the following setup: we fix the two ends of the system in the transport direction and generate the heat flux by maintaining the temperatures in the local atomic groups close to the left and the right ends at 330 K (heat source) and 270 K (heat sink), respectively, using the Nosé-Hoover chain method⁵⁷. The heat flux is calculated based on energy conservation between the system and the baths.

Again, here we only used the NEMD method to cross-check some results obtained using the SW16 potential. The simulation protocol is as follows: First, we equilibrate the system for 1 ns in the NPT ensemble with a target temperature of 300 K and a target in-plane pressure of zero. Second, we make a production run of 10 ns with local thermal baths, sampling the local temperatures and the accumulated energy exchanged between the system and the thermal baths. Third, we use the data within the last 6 ns of the production stage (where we checked that steady state has been achieved) to determine the temperature gradient ∇T , the energy exchange rate dE/dt , and the heat flux $Q = dE/dt/S$, where S is the cross-sectional area. The thermal conductivity is then calculated according to Eq. (15). We keep the width of the system at 10 nm and vary the length from 200 nm to 1000 nm. Periodic boundary conditions are applied to the width direction. For each length, we performed three independent runs and calculated the error bounds in terms of the standard error.

III. RESULTS AND DISCUSSION

A. HNEMD results for single-layer molybdenum disulfide

The accumulative averages of the in-plane thermal conductivity in suspended single-layer MoS₂ calculated using the HNEMD method [cf. Eq. (13)] with the various potentials are shown in Fig. 2. Here, we have decomposed the thermal conductivity into an in-plane component and an out-of-plane component, $\kappa = \kappa^{\text{in}} + \kappa^{\text{out}}$, which corresponds to the following decomposition of the heat current⁵³:

$$\mathbf{J} = \mathbf{J}^{\text{in}} + \mathbf{J}^{\text{out}}; \quad (16)$$

$$\mathbf{J}^{\text{in}} = \sum_i \sum_{j \neq i} \mathbf{r}_{ij} \left(\frac{\partial U_j}{\partial \mathbf{x}_{ji}} v_i^x + \frac{\partial U_j}{\partial y_{ji}} v_i^y \right); \quad (17)$$

$$\mathbf{J}^{\text{out}} = \sum_i \sum_{j \neq i} \mathbf{r}_{ij} \frac{\partial U_j}{\partial z_{ji}} v_i^z. \quad (18)$$

We note that the out-of-plane component κ^{out} is not the thermal conductivity in the cross-plane direction of the MoS₂ layer, but the in-plane thermal conductivity contribution from out-of-plane phonon modes. It is interesting

to note that, for all the potentials, the thermal conductivity is dominated by the in-plane component. This is similar to black phosphorous⁵², but opposite to graphene^{53,58} and h-BN⁵⁴. In planar 2D materials such as graphene and h-BN, the out-of-plane modes correspond exactly to the flexural modes and there is a symmetry selection rule⁵⁸ that excludes three-phonon scattering processes involving an odd number of flexural phonons. This leads to much larger relaxation times for the flexural phonon modes which are consequently the major heat carriers in these materials. Because MoS₂ is not a strictly planar (one-atomic-thick) crystal, the symmetry selection rule does not apply, which leads to relatively stronger phonon-phonon scattering rates and a relatively smaller thermal conductivity contribution from the out-of-plane modes⁵⁹.

We report the converged thermal conductivity values for the various potentials from the HNEMD method in Table I. The large thermal conductivity values computed using the SW13 and SW16 potentials are clearly unphysical as compared to experimental data, while that computed using the REBO-LJ potential is very reasonable. Note that our HNEMD predictions using the SW potentials differ significantly from those from previous works^{23–26}; see Table II. We give the detailed comparisons next.

TABLE I. Thermal conductivity values (in units of W m⁻¹ K⁻¹) for single-layer MoS₂ at 300 K and zero pressure from the HNEMD simulations.

Potential	κ^{in}	κ^{out}	κ
REBO-LJ	91 ± 2	26 ± 1	117 ± 3
SW13	391 ± 14	116 ± 3	507 ± 17
SW13E	139 ± 11	54 ± 3	193 ± 14
SW16	229 ± 19	46 ± 3	275 ± 22

B. Comparison with previous MD results

1. Comparison with previous MD results using the SW13/SW13E potential

Our HNEMD values for the SW13 and SW13E potentials are 507 ± 17 and 193 ± 14 W m⁻¹ K⁻¹, respectively. In comparison, Ding *et al.*²³ obtained a value of 19.76 W m⁻¹ K⁻¹ using the NEMD method and Jin *et al.*²⁴ obtained a value of 116.8 W m⁻¹ K⁻¹ using the EMD method. Unfortunately, it is not clear whether they have used the SW13 or the SW13E potential. In any case, the results by Ding *et al.*²³ can be understood by noticing that they have used very short system lengths in their NEMD simulations, which has been demonstrated^{34,60} to be inadequate for making a reliable extrapolation to the limit of infinite length.

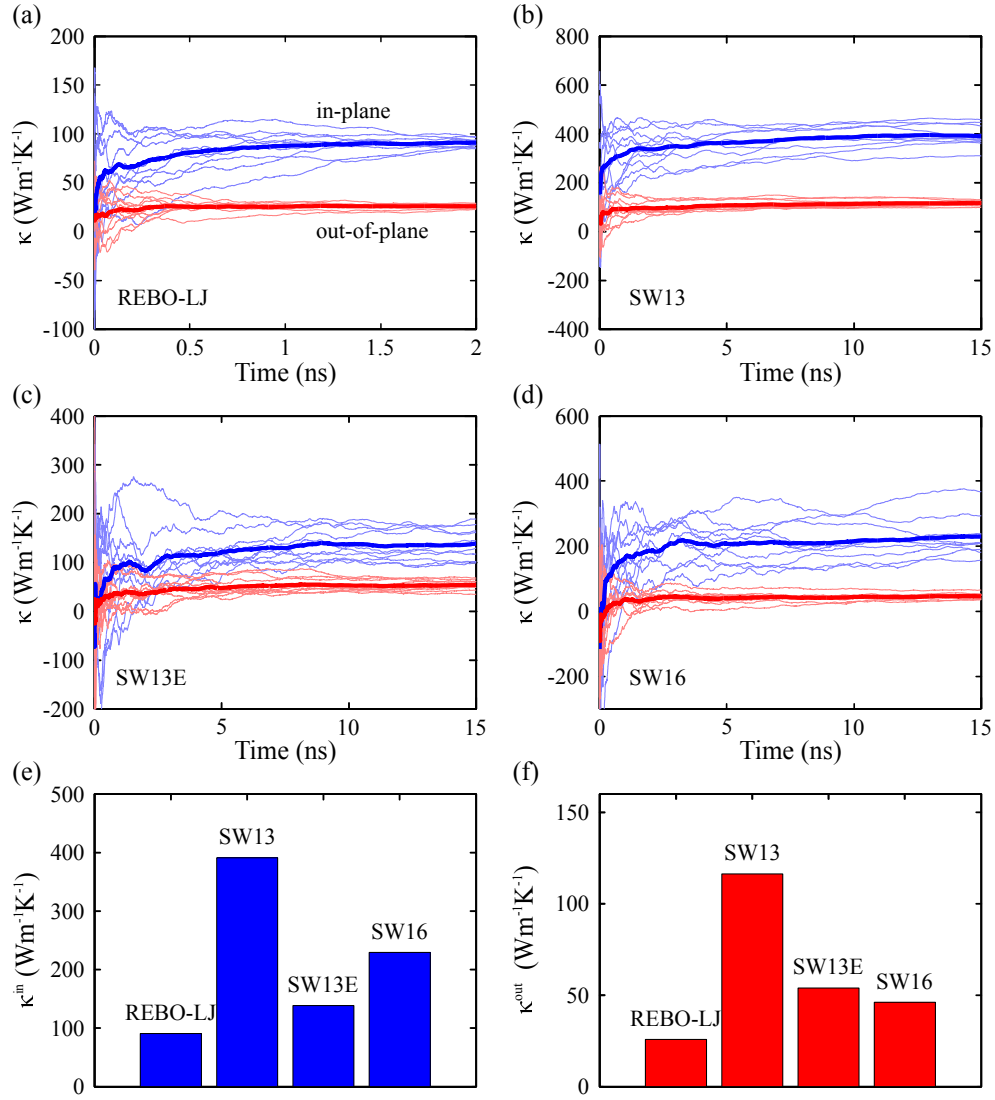


FIG. 2. (a) to (d) Cumulative averages of the thermal conductivity [Eq. (13)] as a function of time from the HNEMD simulations for single-layer MoS₂ at 300 K and zero pressure using the various potentials. The thin lines in each subplot represent ten independent runs and the thick line is the average. (e) and (f) Converged thermal conductivity values for the different potentials.

The EMD results by Jin *et al.*²⁴ differ from our HNEMD results obtained with both the SW13 and the SW13E potentials. To resolve this discrepancy, we performed EMD simulations using both the GPUMD code and the LAMMPS code with these two potentials. For the SW13E potential, we find that the thermal conductivity converges to similar values at 209 ± 22 W m⁻¹ K⁻¹ and 208 ± 13 W m⁻¹ K⁻¹ for GPUMD and LAMMPS respectively (Figs. 3(a) and (b) respectively). As discussed in Sec. II B 3, the SW13E potential excludes all of the three-body interactions. Under this circumstance, the heat current calculations for GPUMD and LAMMPS are the same and an identical thermal conductivity between the codes is expected. Our EMD values are also consistent with our HNEMD value for the SW13E poten-

tial.

With the SW13 potential, three-body interactions are included and the heat current calculations in GPUMD and LAMMPS are different⁵⁶. We find these differences to be substantial as the thermal conductivity is calculated to be 531 ± 53 W m⁻¹ K⁻¹ using GPUMD and the (incorrect) LAMMPS simulations *do not converge* up to a correlation time of 10 ns (Figs. 3(c) and (d) respectively). Among the four combinations of software packages and the SW13E/SW13 potentials, we do not obtain results that are consistent with those in Ref. 24, leaving the discrepancy unresolved. Again, our EMD value using GPUMD is consistent with our HNEMD value for the SW13 potential. We also note that the HNEMD method is more than an order of magnitude more efficient than

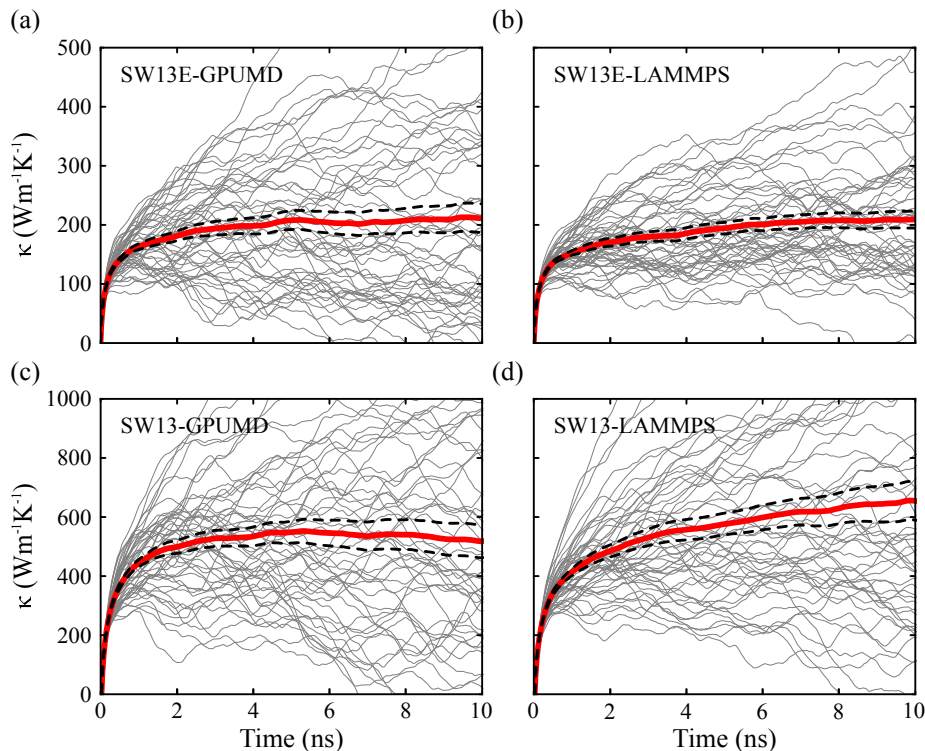


FIG. 3. EMD results for single-layer MoS₂ at 300 K and zero pressure. (a), (b) show results using the SW13E potential for GPUMD and LAMMPS respectively. (c), (d) show results using the SW13 potential for GPUMD and LAMMPS respectively. The thin gray lines represent the results of independent simulations with different initial velocities (50 for each plot), the red thick solid lines indicate the average of all independent simulations, and the black thick dotted lines show the error bounds.

the EMD method, as has been demonstrated for many other systems^{44,52,54}.

2. Comparison with previous MD results using the SW16 potential

Our HNEMD thermal conductivity for the SW16 potential, $275 \pm 22 \text{ W m}^{-1} \text{ K}^{-1}$, is much larger than those in Refs. 25 and 26 [about $100 \text{ W m}^{-1} \text{ K}^{-1}$; cf. Table II]. They have used the EMD, the NEMD, and the Einstein-relation⁶¹ methods and it seems that their results agree with each other very well. To understand the discrepancies, we performed EMD and NEMD simulations using this potential.

Figures 4(a) and 4(b) show the EMD results obtained by using the GPUMD code and the LAMMPS code, respectively. Similar to the case of the SW13 potential, the convergence of $\kappa(t)$ with respect to t is very slow, indicating the inadequate crystal anharmonicity represented by this potential. The converged thermal conductivity using GPUMD is $\kappa = 280 \pm 32 \text{ W m}^{-1} \text{ K}^{-1}$, which is consistent with our HNEMD prediction. The converged thermal conductivity using LAMMPS is $\kappa = 231 \pm 16 \text{ W m}^{-1} \text{ K}^{-1}$, which is smaller than the GPUMD value, but much larger than the EMD value by Hong *et al.*²⁶. It has

been found that the heat current formula in LAMMPS leads to significantly underestimated thermal conductivity for various two-dimensional materials described by many-body potentials, including graphene⁵⁶, h-BN⁵⁴, and black phosphorous⁵². Here, the difference between our GPUMD and LAMMPS results is small, which might be related to the fact that the SW potentials for MoS₂ contain a large portion of the two-body component, as explained in Sec. II B.

Because we failed to reproduce the EMD results by Hong *et al.*²⁶ using the LAMMPS code, we further tried the NEMD method. Using this method and the GPUMD code, we calculated the thermal conductivity $\kappa(L)$ of MoS₂ with the length L varying from 200 nm to 1000 nm. The data are listed in Table III and shown in Fig. 4(c). For the case of $L = 200 \text{ nm}$, we have used both GPUMD and LAMMPS and got identical results. To see how $\kappa(L)$ converges with increasing L , we plot $1/\kappa(L)$ against $1/L$ in Fig. 4(d). Usually, it is assumed⁶² that $1/\kappa(L)$ is linear in $1/L$, but in most cases $1/\kappa(L)$ is a nonlinear function of $1/L$ ^{34,60} due to the frequency dependence of the phonon mean free path $\lambda(\omega)$. Our NEMD data can be well fitted by a quadratic function [the solid line in Fig. 4(d)]:

$$\frac{1}{\kappa(L)} = \frac{1}{\kappa_0} \left(1 + \frac{\lambda}{L} + \frac{\alpha}{L^2} \right), \quad (19)$$

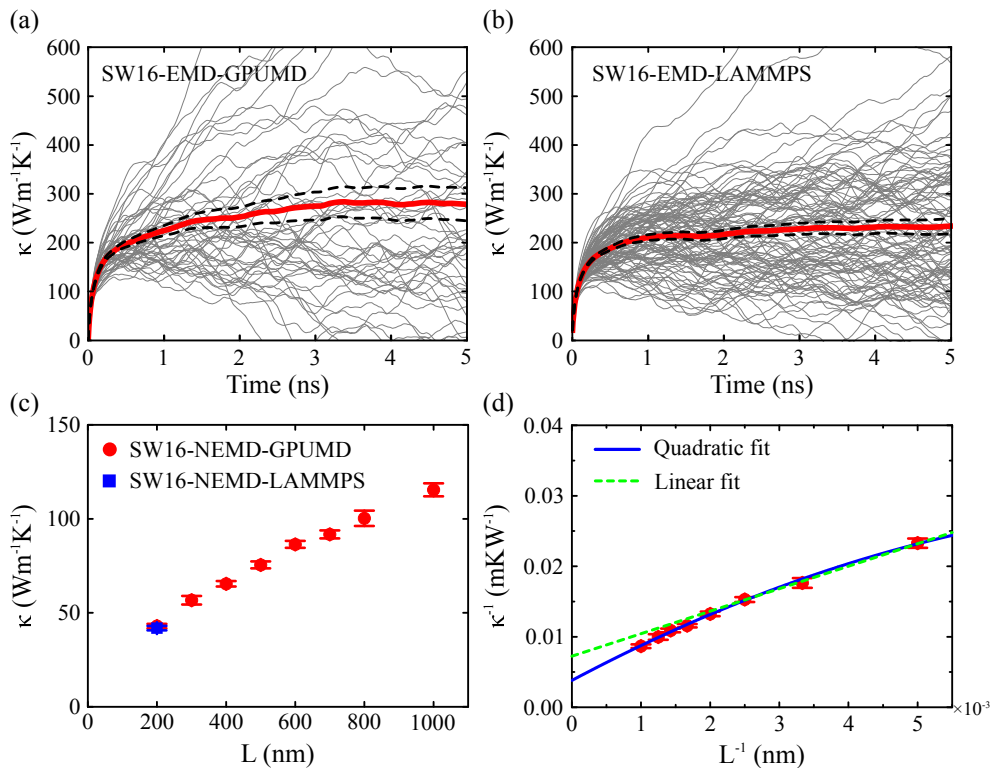


FIG. 4. EMD and NEMD results for single-layer MoS₂ at 300 K and zero pressure using the SW16 potential. Running thermal conductivity as a function of correlation time from the EMD simulations using GPUMD (a) and LAMMPS (b). In (a) and (b), the thin lines represent the results from independent runs and the thick line represents their average. The dashed lines represent error bounds. (c) $\kappa(L)$ from the NEMD simulations. (d) $1/\kappa(L)$ as a function of $1/L$, where the solid line represents a quadratic fit [Eq. (19)] to all the data points and the dashed line represents a linear fit [Eq. (19) with $\alpha = 0$] to the data with $L = 200$ nm to 400 nm.

where $\lambda \approx 1370$ nm is the effective (average) phonon mean free path and α is a (negative) parameter characterizing the nonlinearity caused by the frequency dependence of the phonon mean free path. The thermal conductivity in the infinite-length limit κ_0 is fitted to be 262 ± 28 W m⁻¹ K⁻¹. This is close to but slightly smaller than our HNEMD and EMD predictions. This is because the maximum length (1000 nm) we have considered in our NEMD simulations is still shorter than λ and is not long enough^{34,60} to fully capture the nonlinearity between $1/\kappa(L)$ and $1/L$. We think this could explain why Hong *et al.*²⁶ obtained a much smaller value (110.30 ± 2.07 W m⁻¹ K⁻¹) using NEMD simulations. Their NEMD data actually exhibit nonlinear dependence between $1/\kappa(L)$ and $1/L$, but they still have used a linear fit to their data up to a length of 400 nm. Actually, by fitting our data up to the same length using a linear function (cf. the dashed line in Fig. 4(d)), we get an extrapolated value of $\kappa_0 = 137 \pm 7$, which is close to the value reported by Hong *et al.*²⁶.

The developers of the SW16 potential²⁵ have calculated the thermal conductivity of single-layer MoS₂ using the so-called Einstein-relation method⁶¹. They obtained a value of 95 ± 5 W m⁻¹ K⁻¹, which is significantly

smaller than ours. No details regarding the method and the time convergence in their calculations were presented, and we do not know the origin of the discrepancy. However, we note that the Einstein-relation method consistently underestimated the thermal conductivity of some other materials: it gives a value of 160.5 ± 10.0 W m⁻¹ K⁻¹ for silicon at 300 K (using the Tersoff potential⁶³) against a value of 250 ± 10 W m⁻¹ K⁻¹ using the standard EMD method³⁴; it gives a value of 400 W m⁻¹ K⁻¹ for single-layer h-BN at 300 K (using the Tersoff potential⁶⁴) against a value of 670 ± 30 W m⁻¹ K⁻¹ using both the EMD and the HNEMD method⁵⁴.

C. Comparison among the empirical potentials and with experiments

In this subsection, we give detailed comparisons between our simulation results and available experimental data, as summarized in Table IV. Experimentally measured in-plane thermal conductivities from various sources are typically smaller than 100 W m⁻¹ K⁻¹. Only the prediction by the REBO-LJ potential is close to these; the SW potentials significantly overestimate the

TABLE II. Thermal conductivity values (in units of $\text{W m}^{-1} \text{K}^{-1}$) for single-layer MoS_2 at 300 K and zero pressure as calculated in this work and from previous works using the SW potentials.

Reference	Potential	Method	κ
²³	SW13/SW13E	NEMD	19.76
²⁴	SW13/SW13E	EMD	116.8
Here	SW13	HNEMD	507 ± 17
Here	SW13	EMD (GPUMD)	531 ± 53
Here	SW13	EMD (LAMMPS)	Diverged
Here	SW13E	HNEMD	193 ± 14
Here	SW13E	EMD (GPUMD)	209 ± 22
Here	SW13E	EMD (LAMMPS)	208 ± 13
²⁵	SW16	Einstein relation	95 ± 5
²⁶	SW16	EMD	108.74 ± 6.68
²⁶	SW16	NEMD	110.30 ± 2.07
Here	SW16	HNEMD	275 ± 22
Here	SW16	EMD (GPUMD)	280 ± 32
Here	SW16	EMD (LAMMPS)	231 ± 16
Here	SW16	NEMD	262 ± 28

TABLE III. Thermal conductivity values (in units of $\text{W m}^{-1} \text{K}^{-1}$) calculated with different packages for systems with different lengths L (in units of nm) in the NEMD simulations using the SW16 potential. The number of atoms in each system is denoted as N .

L	N	κ	package
200	72162	42 ± 0.6	LAMMPS
200	72162	43 ± 1.2	GPUMD
300	108186	57 ± 2.2	GPUMD
400	144324	65 ± 1.5	GPUMD
500	180384	75 ± 1.8	GPUMD
600	216486	86 ± 1.9	GPUMD
700	252510	92 ± 2.1	GPUMD
800	288648	100 ± 4.1	GPUMD
1000	360810	115 ± 3.4	GPUMD

thermal conductivity due to the underestimated phonon anharmonicity, as evidenced from the extraordinarily slow convergence of the running thermal conductivity (see Fig. 3(c) and Fig. 4(a)). In contrast, both the time scale and the thermal conductivity value from the REBO-LJ potential are very reasonable (see Fig. 2(a)).

A proper description of thermal transport without an adequate description of phonon dispersion is impossible. To this end, we also calculated the phonon dispersions of MoS_2 as described by the empirical potentials using the finite displacement method as implemented in the PHONOPY⁶⁵ package and compared with experiment

TABLE IV. In-plane thermal conductivity values for suspended and bulk MoS_2 at 300 K from experiments and our predictions using the HNEMD method with the REBO-LJ potential. Isotope scattering is considered in the HNEMD calculations.

Ref.	Sample or method	Layers	κ ($\text{W m}^{-1} \text{K}^{-1}$)
¹⁷	CVD	1	30 ± 3.3 ; 35.5 ± 3
¹⁶	CVD	1	13.3 ± 1.4
¹⁶	CVD	2	15.6 ± 1.5
¹²	CVD	11	52
¹⁶	CVD	12	43.4 ± 9.1
¹⁴	Exfoliated	1	34.5 ± 4
¹⁵	Exfoliated	1	84 ± 17
¹⁵	Exfoliated	2	77 ± 25
¹⁸	Exfoliated	4	34 ± 5 ; 31 ± 4
¹³	Exfoliated	4	44 – 50
¹³	Exfoliated	7	48 – 52
⁹	Natural crystal	bulk	85 – 110
¹⁰	Natural crystal	bulk	105
¹¹	Natural crystal	bulk	80 ± 17
Here	HNEMD (REBO-LJ)	1	110 ± 4
Here	HNEMD (REBO-LJ)	2	92 ± 4
Here	HNEMD (REBO-LJ)	3	81 ± 3
Here	HNEMD (REBO-LJ)	4	78 ± 3
Here	HNEMD (REBO-LJ)	5	80 ± 3
Here	HNEMD (REBO-LJ)	bulk	83 ± 3

data⁶⁶ determined by inelastic X-ray scattering. The required harmonic force constants are calculated by using a 8×5 rectangular supercell (240 atoms), which is large enough to take care of the long-range LJ potential in the REBO-LJ potential. The SW potentials do not need a supercell as large as this but we have used this supercell uniformly for all the potentials. Before generating the displacements, the supercell has been optimized at zero temperature for each potential. Phonon dispersion curves in the Brillouin zone corresponding to the primitive cell were obtained by unfolding⁶⁷ those corresponding to the supercell.

The calculated phonon dispersions are shown in Fig. 5. By comparing with the experimental data⁶⁶, we see that all the three potentials (REBO-LJ, SW13, and SW16) describe the low-frequency acoustic phonons fairly well. The SW13E potential does not lead to reasonable description of the phonon dispersion, which is expected as it is an incorrect implementation of the SW13 potential.

From the comparisons above between the various potentials, in terms of thermal conductivity and phonon dispersion of single-layer MoS_2 , we conclude that the REBO-LJ potential stands out. The REBO-LJ potential has two other advantages: First, it is more transferable because it was fitted by considering various Mo-S structures with diverse coordination numbers. An evidence

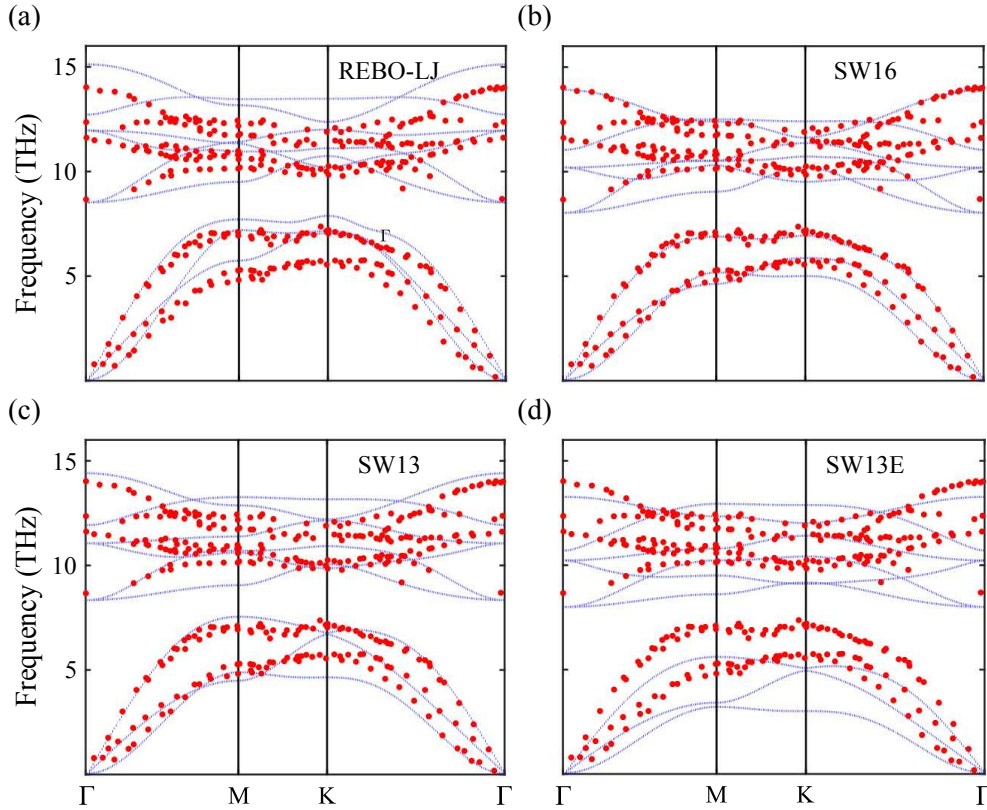


FIG. 5. Phonon dispersion curves for single-layer MoS₂ along the Γ -M-K- Γ high symmetry path calculated using the (a) REBO-LJ potential, (b) SW16 potential, (c) SW13 potential, and (d) SW13E potential. Red dots are experiment data for bulk MoS₂⁶⁶.

for its high transferability comes from a very satisfactory reproduction⁶⁸ of the formation energies of point defects in MoS₂, as compared to those obtained using DFT calculations⁶⁹. In contrast, the SW potentials^{25,33} were fitted by considering only some equilibrium properties such as bond lengths and elastic constants. The implementations of these SW potentials also involve an *ad hoc* modification to the LAMMPS source code, which is problematic when the structure is away from the equilibrium MoS₂ structure; the intention of this modification was to exclude the interactions in triplets such as Mo-S₁-S₅ in Fig. 1, but it will lead to excluding the S-Mo-Mo triplet interactions when the Mo-Mo distance is larger than the S-S cutoff distance and smaller than the Mo-Mo cutoff distance, which is unreasonable. Second, there is an intrinsic van der Waals part in the REBO-LJ potential, which is important for describing multi-layer systems. This part was not included in the SW potentials. From here on, we only use the REBO-LJ potential and the efficient HNEMD method, focusing on comparisons with experiments^{8–18} and results from BTE approach combined with DFT calculations^{19,20}.

In our previous simulations, we have only considered isotopically pure systems. As the experimental samples have not been isotopically purified, we include isotope ef-

fect on heat transport by considering a uniformly random spatial distribution of the atomic masses according to the isotopic abundances of Mo and S elements compiled in table 1 of Ref. 70. The calculated in-plane thermal conductivity of suspended monolayer is $110 \pm 4 \text{ W m}^{-1} \text{ K}^{-1}$, which is nearly unchanged compared to that of isotopically pure MoS₂. This is similar to the finding by Li *et al.*¹⁹ obtained by using the BTE method combined with DFT calculations. The small effect of isotope scattering on the thermal conductivity is expected as the mass mismatch between Mo and S is only slightly affected by the inclusion of naturally occurring isotopes.

Experimental measurements are available not only for single-layer MoS₂, but also for multi-layer and bulk MoS₂. We calculated the thermal conductivity of bulk MoS₂ (represented as six-layer MoS₂ with periodic boundary conditions in all directions) as well as two- to five-layer MoS₂, with isotope disorder included. The relevant results are presented in Table IV and also visualized in Fig. 6. The layer dependence of thermal conductivity is very similar to that obtained by Gu *et al.*²⁰ based on BTE calculations; the thermal conductivity decreases with increasing layer number n and saturates at $n = 3$. It has been suggested that both the change of phonon dispersion and the thickness-induced anharmonicity associ-

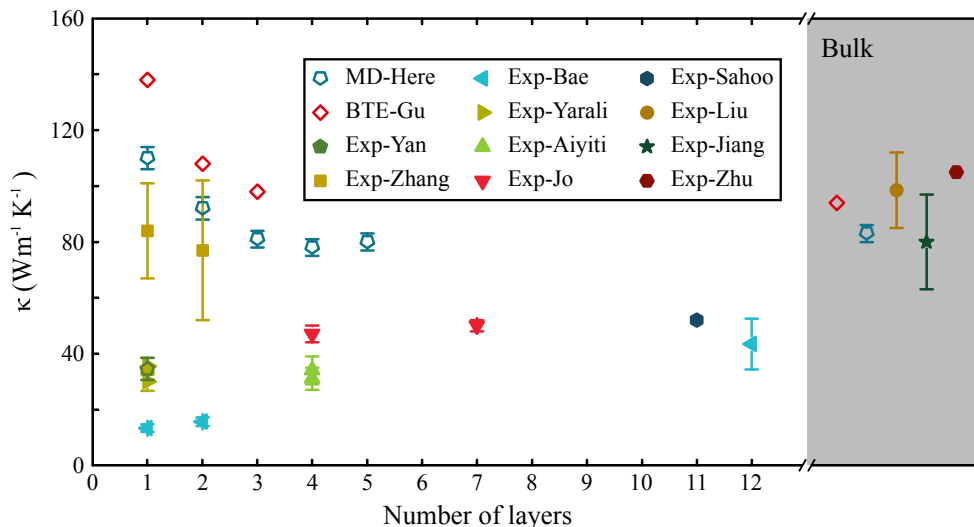


FIG. 6. Thermal conductivity as a function of the number of layers for MoS₂ at 300 K and zero pressure. Sources of reference data: Liu⁹; Zhu¹⁰; Jiang¹¹; Sahoo¹²; Jo¹³; Yan¹⁴; Zhang¹⁵; Bae¹⁶; Yarali¹⁷; Aiyiti¹⁸; Gu²⁰.

ated with the breakdown of a mirror symmetry in single-layer MoS₂ are responsible for the reduction of thermal conductivity with increasing layer number²⁰.

TABLE V. Through-plane thermal conductivity κ_z of bulk MoS₂ at 300 K from experiments and our calculations using the HNEMD method with the REBO-LJ potential. Isotope scattering is considered in the HNEMD calculations.

Ref.	κ_z (W m ⁻¹ K ⁻¹)
8	~ 2.3
9	2.0 ± 0.3
10	2.0
11	4.75 ± 0.32
Here	2.0 ± 0.2

Apart from bulk MoS₂, our MD predicted values are consistently larger than experimental values, which however show large variations. Variations in the experimental results could be due to differences in the quality of each sample, measurement calibration, and the presence of thermal contact resistance. Indeed, some experimental samples^{12,16,17} were grown by chemical vapor deposition (CVD), which are usually polycrystalline, consisting of grains separated by grain boundaries. It has been recently shown that dense grain boundaries can heavily reduce⁷¹ the thermal conductivity of MoS₂. Even for exfoliated samples, there are defects and possibly rough edges¹⁸ which can also reduce the thermal conductivity. Nevertheless, our MD results for single-layer and bi-layer MoS₂ are close to those measured by Zhang *et al.*¹⁵ on exfoliated samples. In the other limit of bulk MoS₂, our MD predicted value agree well with those measured on

natural crystals (with high purity)^{9–11}. Moreover, our calculated through-plane thermal conductivity κ_z is also close to the experimental values, as can be seen from Table V. Based on all these comparisons, we conclude that the REBO-LJ potential has predictive power in terms of thermal transport properties in Mo-S systems and can be used for more spatially complex structures than pristine MoS₂, where the BTE-based method is less applicable. We leave these applications to future work.

IV. SUMMARY AND CONCLUSIONS

In summary, we have employed extensive classical MD simulations to study heat transport in single-layer, multi-layer, and bulk MoS₂. We considered three existing empirical many-body potentials for MoS₂ in the literature: the REBO-LJ potential^{39,40,50}, the SW13 potential by Jiang *et al.*³³, and the SW16 potential by Kandemir *et al.*²⁵. To calculate the thermal conductivity, we mainly used the highly efficient HNEMD method for many-body potentials⁴⁴ and used the EMD and NEMD methods to check the consistency of our data. Most of the MD simulations were done using the efficient GPUMD code^{45–47}, but the LAMMPS code^{48,49} was also used in some cases to double-check. For each empirical potential used, we have obtained consistent results between the different MD methods by using the GPUMD code. However, our results differ significantly from some previous studies in the literature. While we can understand the NEMD results by Ding *et al.*²³ and Hong *et al.*²⁶, we failed, despite extensive efforts, to reproduce the EMD results by Jin *et al.*²⁴, Hong *et al.*²⁶, and Kandemir *et al.*²⁵.

Based on our results for single-layer MoS₂, we found that both the SW13 and the SW16 potentials do not

describe the phonon anharmonicity of MoS₂ properly: they lead to very slow convergence of the running thermal conductivity in the Green-Kubo relation, indicating the existence of phonon modes with very long relaxation times or very large mean free paths. In contrast, both the time scale and the thermal conductivity value from the REBO-LJ potential are very reasonable.

Finally, we took isotope scattering into account and evaluated the thermal conductivities of single-layer, multi-layer and bulk MoS₂ using the REBO-LJ potential and compared closely with predictions obtained from the BTE approach as well as available experimental data. We found that the thermal conductivity decreases with increasing layer number n and saturates at $n = 3$, which agrees with the prediction by Gu *et al.*²⁰ from BTE calculations. Our predicted thermal conductivity values agree well with those measured on samples with relatively high quality^{9–11,15}. We also compared the phonon dispersion curves calculated using the empirical potentials with available experimental data⁶⁶. From all these comparisons, we identify the REBO-LJ potential as a transferable empirical potential for MoS₂ that can be applied to study thermal transport properties of MoS₂ in more complicated situations such as systems with the presence of defects, grain boundaries or specifically engineered nanoscale features, where the BTE approach is less practical. Such applications will be considered in future studies. This work establishes a firm foundation for understanding heat transport properties of MoS₂ using MD simulations.

ACKNOWLEDGMENTS

We thank Xiaokun Gu and Zhennan Kou for fruitful discussions. This work was supported in part by the National Natural Science Foundation of China (Grant Nos. 11404033 and 11502217) and in part by the Academy of Finland (Projects Nos. 286279 and 311058) and its Centre of Excellence program QTF (Project 312298). We acknowledge the computational resources provided by Aalto Science-IT project, Finland’s IT Center for Science (CSC) and HPC of NWFU. A.J.G. acknowledges support from the NDSEG Fellowship as well as Stanford University and the Stanford Research Computing Center for providing computational resources that contributed to these results. A.J.G. and E.P. acknowledge support from the Air Force Office of Scientific Research (AFOSR) grant FA9550-14-1-0251, the National Science Foundation (NSF) EFRI 2-DARE grant 1542883, and the Stanford SystemX Alliance. A.V.K. also thanks DFG for the support under Project No. KR 4866/2-1.

Appendix A: Demonstration of the small finite-size effects in HNEMD simulations

In the HNEMD and EMD methods, there is no boundary in the transport direction and the system is ho-

mogeneous in terms of temperature distribution. Periodic boundary conditions are applied in the transport direction and when the periodic simulation cell is large enough, the calculated thermal conductivity can be considered as that of an infinitely long system. When the simulation cell is too small, there might be finite-size effects. However, the finite-size effects in EMD and HNEMD methods are usually quite small. The simulation cell size does not need to be comparable to the phonon mean free path of the studied material. The cell size in these methods only needs to be large enough to accommodate the major phonon wavelengths, which are of the order of 10 nm in MoS₂.

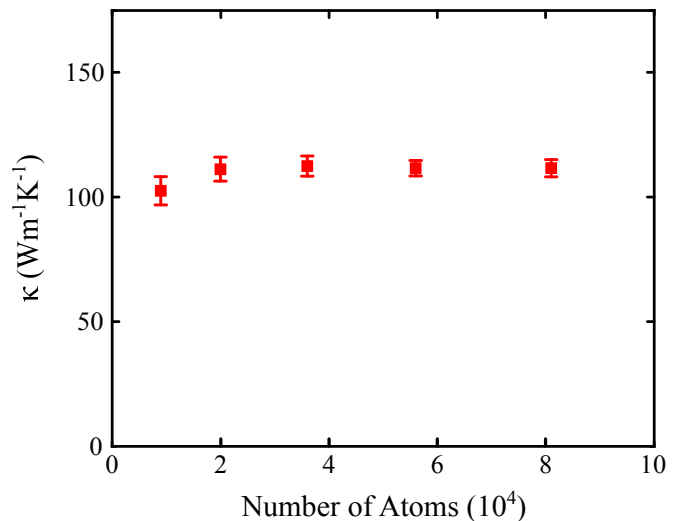


FIG. 7. Thermal conductivity of isotopically pure single-layer MoS₂ at 300 K calculated by using the HNEMD method with the REBO-LJ potential as a function of the number of atoms in the periodic simulation cell.

From Fig. 7, we see that the thermal conductivity from the HNEMD method barely changes when the number of atoms exceeds 20 000, or when the linear size exceeds 24 nm. Similar results can be obtained by using the EMD method. The small finite size effects have been repeatedly reported in the literature. For example, a cubic cell with a side length of a few nanometers is large enough for bulk silicon crystal³⁴ and a rectangular cell with a side length of 25 nm is large enough for two-dimensional graphene⁵³. These cells are one to two orders of magnitude smaller than the typical phonon mean free paths in these materials. Small finite-size effects are the very advantage of the HNEMD and EMD methods over the NEMD method.

- * gabourie@stanford.edu
† arsalan.hashemi@aalto.fi
‡ brucenju@gmail.com
§ weining@mail.tsinghua.edu.cn
- ¹ K. F. Mak, C. Lee, J. Hone, J. Shan, and T. F. Heinz, *Phys. Rev. Lett.* **105**, 136805 (2010).
 - ² A. Splendiani, L. Sun, Y. Zhang, T. Li, J. Kim, C.-Y. Chim, G. Galli, and F. Wang, *Nano Letters* **10**, 1271 (2010).
 - ³ Q. H. Wang, K. Kalantar-Zadeh, A. Kis, J. N. Coleman, and M. S. Strano, *Nature Nanotechnology* **7**, 699 (2012).
 - ⁴ E. Yalon, C. J. McClellan, K. K. H. Smithe, M. Muñoz Rojo, R. L. Xu, S. V. Suryavanshi, A. J. Gabourie, C. M. Neumann, F. Xiong, A. B. Farimani, and E. Pop, *Nano Letters* **17**, 3429 (2017).
 - ⁵ K. K. H. Smithe, C. D. English, S. V. Suryavanshi, and E. Pop, *Nano Letters* **18**, 4516 (2018).
 - ⁶ J. Pu, K. Kanahashi, N. T. Cuong, C.-H. Chen, L.-J. Li, S. Okada, H. Ohta, and T. Takenobu, *Phys. Rev. B* **94**, 014312 (2016).
 - ⁷ K. Hippalgaonkar, Y. Wang, Y. Ye, D. Y. Qiu, H. Zhu, Y. Wang, J. Moore, S. G. Louie, and X. Zhang, *Phys. Rev. B* **95**, 115407 (2017).
 - ⁸ C. Muratore, V. Varshney, J. J. Gengler, J. J. Hu, J. E. Bultman, T. M. Smith, P. J. Shamberger, B. Qiu, X. Ruan, A. K. Roy, and A. A. Voevodin, *Applied Physics Letters* **102**, 081604 (2013).
 - ⁹ J. Liu, G.-M. Choi, and D. G. Cahill, *Journal of Applied Physics* **116**, 233107 (2014).
 - ¹⁰ G. Zhu, J. Liu, Q. Zheng, R. Zhang, D. Li, D. Banerjee, and D. G. Cahill, *Nature Communications* **7**, 13211 (2016).
 - ¹¹ P. Jiang, X. Qian, X. Gu, and R. Yang, *Advanced Materials* **29**, 1701068 (2017).
 - ¹² S. Sahoo, A. P. S. Gaur, M. Ahmadi, M. J.-F. Guinel, and R. S. Katiyar, *The Journal of Physical Chemistry C* **117**, 9042 (2013).
 - ¹³ I. Jo, M. T. Pettes, E. Ou, W. Wu, and L. Shi, *Applied Physics Letters* **104**, 201902 (2014).
 - ¹⁴ R. Yan, J. R. Simpson, S. Bertolazzi, J. Brivio, M. Watson, X. Wu, A. Kis, T. Luo, A. R. Hight Walker, and H. G. Xing, *ACS Nano* **8**, 986 (2014).
 - ¹⁵ X. Zhang, D. Sun, Y. Li, G.-H. Lee, X. Cui, D. Chenet, Y. You, T. F. Heinz, and J. C. Hone, *ACS Applied Materials & Interfaces* **7**, 25923 (2015).
 - ¹⁶ J. J. Bae, H. Y. Jeong, G. H. Han, J. Kim, H. Kim, M. S. Kim, B. H. Moon, S. C. Lim, and Y. H. Lee, *Nanoscale* **9**, 2541 (2017).
 - ¹⁷ M. Yarali, X. Wu, T. Gupta, D. Ghoshal, L. Xie, Z. Zhu, H. Brahmi, J. Bao, S. Chen, T. Luo, N. Koratkar, and A. Mavrokefalos, *Advanced Functional Materials* **27**, 1704357 (2017).
 - ¹⁸ A. Aiyiti, S. Hu, C. Wang, Q. Xi, Z. Cheng, M. Xia, Y. Ma, J. Wu, J. Guo, Q. Wang, J. Zhou, J. Chen, X. Xu, and B. Li, *Nanoscale* **10**, 2727 (2018).
 - ¹⁹ W. Li, J. Carrete, and N. Mingo, *Applied Physics Letters* **103**, 253103 (2013).
 - ²⁰ X. Gu, B. Li, and R. Yang, *Journal of Applied Physics* **119**, 085106 (2016).
 - ²¹ D. O. Lindroth and P. Erhart, *Phys. Rev. B* **94**, 115205 (2016).
 - ²² A. Cepellotti and N. Marzari, *Nano Letters* **17**, 4675 (2017).
 - ²³ Z. Ding, J.-W. Jiang, Q.-X. Pei, and Y.-W. Zhang, *Nanotechnology* **26**, 065703 (2015).
 - ²⁴ Z. Jin, Q. Liao, H. Fang, Z. Liu, W. Liu, Z. Ding, T. Luo, and N. Yang, *Scientific Reports* **5**, 18342 (2015).
 - ²⁵ A. Kandemir, H. Yapicioglu, A. Kinaci, T. Cagin, and C. Sevik, *Nanotechnology* **27**, 055703 (2016).
 - ²⁶ Y. Hong, J. Zhang, and X. C. Zeng, *The Journal of Physical Chemistry C* **120**, 26067 (2016).
 - ²⁷ W. Li, J. Carrete, N. A. Katcho, and N. Mingo, *Computer Physics Communications* **185**, 1747 (2014).
 - ²⁸ A. Chernatynskiy and S. R. Phillpot, *Computer Physics Communications* **192**, 196 (2015).
 - ²⁹ A. Togo, L. Chaput, and I. Tanaka, *Phys. Rev. B* **91**, 094306 (2015).
 - ³⁰ J. Carrete, B. Vermeersch, A. Katre, A. van Roekeghem, T. Wang, G. K. Madsen, and N. Mingo, *Computer Physics Communications* **220**, 351 (2017).
 - ³¹ T. Tadano, Y. Gohda, and S. Tsuneyuki, *Journal of Physics: Condensed Matter* **26**, 225402 (2014).
 - ³² F. H. Stillinger and T. A. Weber, *Phys. Rev. B* **31**, 5262 (1985).
 - ³³ J.-W. Jiang, H. S. Park, and T. Rabczuk, *Journal of Applied Physics* **114**, 064307 (2013).
 - ³⁴ H. Dong, Z. Fan, L. Shi, A. Harju, and T. Ala-Nissila, *Physical Review B* **97**, 094305 (2018).
 - ³⁵ W. Winer, *Wear* **10**, 422 (1967).
 - ³⁶ G. C. Abell, *Phys. Rev. B* **31**, 6184 (1985).
 - ³⁷ J. Tersoff, *Phys. Rev. B* **37**, 6991 (1988).
 - ³⁸ D. W. Brenner, *Phys. Rev. B* **42**, 9458 (1990).
 - ³⁹ T. Liang, S. R. Phillpot, and S. B. Sinnott, *Phys. Rev. B* **79**, 245110 (2009).
 - ⁴⁰ T. Liang, S. R. Phillpot, and S. B. Sinnott, *Phys. Rev. B* **85**, 199903 (2012).
 - ⁴¹ B. Mortazavi and T. Rabczuk, *RSC Adv.* **7**, 11135 (2017).
 - ⁴² D. J. Evans, *Physics Letters A* **91**, 457 (1982).
 - ⁴³ D. J. Evans and G. P. Morris, *Statistical Mechanics of Nonequilibrium Liquids* (Academic, New York, 1990).
 - ⁴⁴ Z. Fan, H. Dong, A. Harju, and T. Ala-Nissila, [arXiv:1805.00277 \[cond-mat.mtrl-sci\]](https://arxiv.org/abs/1805.00277).
 - ⁴⁵ Z. Fan, T. Siro, and A. Harju, *Computer Physics Communications* **184**, 1414 (2013).
 - ⁴⁶ Z. Fan, W. Chen, V. Vierimaa, and A. Harju, *Computer Physics Communications* **218**, 10 (2017).
 - ⁴⁷ <https://github.com/brucefan1983/GPUMD>.
 - ⁴⁸ S. Plimpton, *Journal of Computational Physics* **117**, 1 (1995).
 - ⁴⁹ <http://lammps.sandia.gov>.
 - ⁵⁰ J. A. Stewart and D. E. Spearot, *Modelling and Simulation in Materials Science and Engineering* **21**, 045003 (2013).
 - ⁵¹ <https://research.matse.psu.edu/sinnott/software>.
 - ⁵² K. Xu, Z. Fan, J. Zhang, N. Wei, and T. Ala-Nissila, *Modelling and Simulation in Materials Science and Engineering* **26**, 085001 (2018).
 - ⁵³ Z. Fan, L. F. C. Pereira, P. Hirvonen, M. M. Ervasti, K. R. Elder, D. Donadio, T. Ala-Nissila, and A. Harju, *Phys. Rev. B* **95**, 144309 (2017).
 - ⁵⁴ H. Dong, P. Hirvonen, Z. Fan, and T. Ala-Nissila, *Phys. Chem. Chem. Phys.* **20**, 24602 (2018).
 - ⁵⁵ M. Gill-Comeau and L. J. Lewis, *Phys. Rev. B* **92**, 195404 (2015).

- ⁵⁶ Z. Fan, L. F. C. Pereira, H.-Q. Wang, J.-C. Zheng, D. Donadio, and A. Harju, *Physical Review B* **92**, 094301 (2015).
- ⁵⁷ M. E. Tuckerman, *Statistical Mechanics: Theory and Molecular Simulation* (Oxford University Press, 2010).
- ⁵⁸ L. Lindsay, D. A. Broido, and N. Mingo, *Phys. Rev. B* **82**, 115427 (2010).
- ⁵⁹ X. Gu, Y. Wei, X. Yin, B. Li, and R. Yang, *Rev. Mod. Phys.* **90**, 041002 (2018).
- ⁶⁰ D. P. Sellan, E. S. Landry, J. E. Turney, A. J. H. McGaughey, and C. H. Amon, *Phys. Rev. B* **81**, 214305 (2010).
- ⁶¹ A. Kinaci, J. B. Haskins, and T. Cagin, *The Journal of Chemical Physics* **137**, 014106 (2012).
- ⁶² P. K. Schelling, S. R. Phillpot, and P. Keblinski, *Physical Review B* **65**, 144306 (2002).
- ⁶³ J. Tersoff, *Phys. Rev. B* **39**, 5566 (1989).
- ⁶⁴ C. Sevik, A. Kinaci, J. B. Haskins, and T. Cagin, *Phys. Rev. B* **84**, 085409 (2011).
- ⁶⁵ A. Togo and I. Tanaka, *Scripta Materialia* **108**, 1 (2015).
- ⁶⁶ H. Tornatzky, R. Gillen, H. Uchiyama, and J. Maultzsch, *arXiv:1809.03381* (2018).
- ⁶⁷ F. Zheng and P. Zhang, *Computer Physics Communications* **210**, 139 (2017).
- ⁶⁸ M. Ghorbani-Asl, S. Kretschmer, D. E. Spearot, and A. V. Krasheninnikov, *2D Materials* **4**, 025078 (2017).
- ⁶⁹ H.-P. Komsa and A. V. Krasheninnikov, *Phys. Rev. B* **91**, 125304 (2015).
- ⁷⁰ J. Meija, T. B. Coplen, M. Berglund, W. A. Brand, P. D. Bièvre, M. Grning, N. E. Holden, J. Irrgeher, R. D. Loss, T. Walczyk, and T. Prohaska, *Pure and Applied Chemistry* **88**, 293 (2016).
- ⁷¹ M. Sledzinska, R. Quey, B. Mortazavi, B. Graczykowski, M. Placidi, D. Saleta Reig, D. Navarro-Urrios, F. Alzina, L. Colombo, S. Roche, and C. M. Sotomayor Torres, *ACS Applied Materials & Interfaces* **9**, 37905 (2017).