



CHORUS

This is the accepted manuscript made available via CHORUS. The article has been published as:

Coupling of magnetic order and charge transport in the candidate Dirac semimetal EuCd_2As_2

M. C. Rahn, J.-R. Soh, S. Francoual, L. S. I. Veiga, J. Stremper, J. Mardegan, D. Y. Yan, Y. F. Guo, Y. G. Shi, and A. T. Boothroyd

Phys. Rev. B **97**, 214422 — Published 20 June 2018

DOI: [10.1103/PhysRevB.97.214422](https://doi.org/10.1103/PhysRevB.97.214422)

Coupling of magnetic order and charge transport in the candidate Dirac semimetal EuCd_2As_2

M. C. Rahn,^{1,*} J.-R. Soh,¹ S. Francoual,² L. S. I. Veiga,^{2,†} J. Strempper,^{2,‡}
J. Mardegan,^{2,§} D. Y. Yan,³ Y. F. Guo,^{4,5} Y. G. Shi,³ and A. T. Boothroyd^{1,¶}

¹*Department of Physics, University of Oxford, Clarendon Laboratory, Oxford, OX1 3PU, United Kingdom*

²*Deutsches Elektronen-Synchrotron (DESY), Notkestraße 85, 22607 Hamburg, Germany*

³*Beijing National Laboratory for Condensed Matter Physics,*

Institute of Physics, Chinese Academy of Sciences, Beijing 100190, China

⁴*School of Physical Science and Technology, ShanghaiTech University, Shanghai 201210, China*

⁵*CAS Center for Excellence in Superconducting Electronics (CENSE), Shanghai 200050, China*

(Dated: June 5, 2018)

We use resonant elastic x-ray scattering to determine the evolution of magnetic order in EuCd_2As_2 below $T_N = 9.5$ K, as a function of temperature and applied magnetic field. We find an A-type antiferromagnetic structure with in-plane magnetic moments, and observe dramatic magnetoresistive effects associated with field-induced changes in the magnetic structure and domain populations. Our *ab initio* electronic structure calculations indicate that the Dirac dispersion found in the non-magnetic Dirac semimetal Cd_3As_2 is also present in EuCd_2As_2 , but is gapped for $T < T_N$ due to the breaking of C_3 symmetry by the magnetic structure.

PACS numbers: 75.25.-j, 78.70.Ck, 71.15.Mb, 71.20.-b

I. INTRODUCTION

The layered intermetallic EuCd_2As_2 is of interest owing to its structural relation to Cd_3As_2 , the first identified example of a bulk Dirac semimetal^{1,2}. It features similar networks of edge-sharing CdAs_4 tetrahedra, but in a layered, rather than three-dimensional, geometry and with interleaved planes of magnetic Eu^{2+} ions. While ever more non-magnetic topological phases are being proposed and discovered, the search for materials that combine non-trivial electronic topology with strong correlations has advanced at a slower pace^{3,4}. Magnetism may provide a handle with which to control the unusual transport properties of Dirac fermions, such as giant negative magnetoresistance^{5,6}. This could be a first step towards an application in electronic devices⁷.

EuCd_2As_2 was first synthesized (in polycrystalline form) in the search for novel pnictide Zintl phases by Artmann *et al.*⁸. Pnictides with 122 stoichiometry and trigonal CaAl_2Si_2 -type structure (space group $P\bar{3}m1$) are less common than related tetragonal materials, such as the superconductor parent-compound EuFe_2As_2 ⁸⁻¹⁰. A number of such trigonal compounds, related to EuCd_2As_2 by ionic substitutions on any site, have recently attracted interest due to their (high temperature) thermoelectric properties^{11,12}. As in other Eu-based materials of this family¹³⁻¹⁵, low temperature magnetometry of EuCd_2As_2 powders revealed ferromagnetic correlations (a positive Curie-Weiss temperature $\Theta_{\text{CW}} = 9.3$ K) and a large effective magnetic moment of $\mu_{\text{eff}} = 7.7 \mu_{\text{B}}$, close to the free-ion value of $7.94 \mu_{\text{B}}$ expected for the divalent state of Eu ($S = 7/2$, $L = 0$) [8].

The unusual magnetic transition at low temperatures was initially interpreted as a successive ferromagnetic (16 K) and then antiferromagnetic (9.5 K) ordering of the

Eu spins in the triangular layers. In a Mössbauer study of single-crystalline EuCd_2As_2 , a ferromagnetic phase was later ruled out and attributed to Eu^{3+} -containing impurities introduced by oxidation of the polycrystalline samples¹⁶.

A first investigation of EuCd_2As_2 single crystals was recently reported by Wang *et al.*, who observed a strong coupling between charge transport and magnetic degrees of freedom¹⁷. This is seen as a strong resistivity anomaly associated with the magnetic ordering transition, which can be suppressed by an applied magnetic field.

In order to better understand the interplay between charge transport and magnetism, we have performed an in-depth resonant elastic x-ray scattering (REXS) study of the magnetic order in EuCd_2As_2 , as a function of temperature and applied magnetic field. We then used these results to investigate what effect magnetic order has on the electronic structure as calculated by density functional theory.

Our REXS study establishes that EuCd_2As_2 orders into an A-type antiferromagnetic structure below $T_N = 9.5$ K, with the Eu spins aligned parallel to the triangular layers. This magnetic structure breaks the C_3 symmetry of the paramagnetic phase and, according to our *ab initio* electronic structure calculations, opens a gap at the Dirac points in the vicinity of the Fermi surface. Conversely, these results imply that other materials of the CaAl_2Si_2 -type structure could host Dirac fermions that couple to a magnetically ordered state at zero field, if the three-fold rotational symmetry is conserved.

II. EXPERIMENTAL AND COMPUTATIONAL DETAILS

Single crystals of EuCd_2As_2 were synthesized by the NaCl/KCl flux growth method, as described by Schellenberg *et al.*¹⁶. This yields shiny metallic platelets (c axis surface normal) with dimensions up to $2 \times 2 \text{ mm}^2$ and 0.5 mm thickness. The samples were screened by $\text{Mo } K_\alpha$ x-ray diffraction¹⁸ to confirm the trigonal crystal structure (space group $P\bar{3}m1$) that had been originally determined by Artmann *et al.*⁸ (see Supplemental Material^{19,20}). The structure, along with the model of the zero-field magnetic order determined here, is illustrated in Fig. 1.

Measurements of the magnetic properties of EuCd_2As_2 had previously been reported for polycrystalline samples⁸, and on single crystals with the field applied along an arbitrary direction¹⁶. Here, we supplement these results with magnetometry data recorded in magnetic fields applied both parallel and perpendicular to the trigonal c axis. These measurements were made with a superconducting quantum interference device (SQUID) magnetometer (Quantum Design²¹).

The thermal variation of the resistivity of EuCd_2As_2 single crystals has recently been reported by Wang *et al.*¹⁷ (at zero field and 9 T). In order to characterize the electronic transport properties of EuCd_2As_2 in more detail, we performed alternating current transport (ACT) measurements using the six-point sample contacting geometry (Quantum Design PPMS; the experimental arrangement is described in the Supplemental Material¹⁹). The magnetic field was applied along the c axis throughout, and the current was applied in the a - b plane.

In order to determine the magnetic structure of EuCd_2As_2 , REXS experiments were performed in the second experimental hutch (EH2) of beamline P09 of PETRA-III at DESY, see Ref. 22. Neutron diffraction studies had been called for in the literature¹⁷, but are hindered by the extremely large neutron absorption cross-sections of both Eu (4530 b) and Cd (2520 b). On the other hand, the magnetic moments of rare earth ions are known to couple strongly to L edge resonant dipole ($2p \rightarrow 5d$) transitions. REXS in the hard x-ray regime, therefore, is an ideal alternative for magnetic structure determination in this material.

Two separate EuCd_2As_2 single crystals were probed, with a magnetic field applied perpendicular and nearly parallel to the c axis, respectively. To enhance the magnetic x-ray scattering from Eu^{2+} magnetic ions, the photon energy was tuned to the Eu L_3 edge at $\hbar\omega \approx 6.972 \text{ keV}$ ($\lambda = 1.778 \text{ \AA}$). The REXS setup at beamline P09-EH2 has several unique advantages for the present study, including a double phase retarder for full linear polarization analysis (FLPA) at hard x-ray energies and a vertical 14 T cryomagnet. We provide detailed information on the sample orientation, scattering geometry^{23,24} and FLPA technique^{25–29} in the Supplemental Material¹⁹.

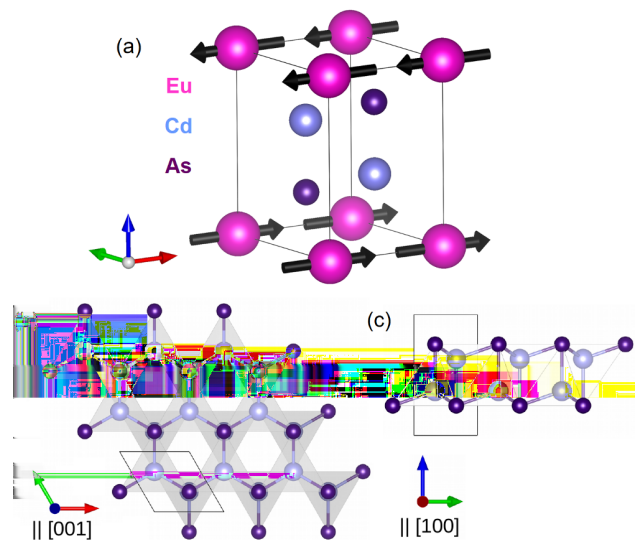


FIG. 1. (color online). (a) Structural unit cell of EuCd_2As_2 with $P\bar{3}m1$ trigonal symmetry and lattice parameters $a \simeq 4.44 \text{ \AA}$ and $c \simeq 7.33 \text{ \AA}$. The magnetic Eu ion is located at the origin (Wyckoff position $1a$), while Cd and As atoms at $2d$ positions $(1/3, 2/3, z_{\text{Cd}})$, $z_{\text{Cd}} \simeq 0.63$, and $(1/3, 2/3, z_{\text{As}})$, $z_{\text{As}} \simeq 0.25$, form layers of Cd-As tetrahedra as illustrated in panels (b)–(c). The A-type antiferromagnetic structure, propagation vector $\mathbf{q}_m = (0, 0, 0.5)$, with in-plane magnetic moments is also shown.

For full polarization analysis, two magnetic Bragg peaks were selected in each experimental setting. In the first setting ($\mathbf{H} \perp \mathbf{c}$), magnetic scattering at the wave vectors $(0, 0, 4.5)$ and $(1, 0, 5.5)$ (in reciprocal lattice units) was characterized in zero field as well as in applied fields of 50 and 300 mT. In the second setting ($\mathbf{H} \parallel \mathbf{c}$) we investigated peaks at $(4, 0, -0.5)$ and $(4, -2, -0.5)$, in zero field and in applied fields of 0.5 and 1.0 T.

The REXS scattering amplitude has a complex dependence on the relative orientations of the magnetic moments, x-ray polarization and wave vectors. It can be conveniently expressed in a basis of polarization vectors perpendicular, $\sigma=(1,0)$, and parallel, $\pi=(0,1)$, to the scattering plane³⁰. The definition of these vectors in the present scattering geometry is illustrated in Fig. S3 of the Supplemental Material¹⁹.

In the case of dominant electric dipole (E1) excitations, the scattering amplitude tensor is given by³¹

$$\begin{aligned}
 F_{E1} &\propto (\hat{\epsilon}_f \times \hat{\epsilon}_i) \cdot \hat{\mathbf{M}}_{\hat{\mathbf{u}}} = \begin{pmatrix} 0 & \hat{\mathbf{k}}_i \\ -\hat{\mathbf{k}}_f & \hat{\mathbf{k}}_f \times \hat{\mathbf{k}}_i \end{pmatrix} \cdot \hat{\mathbf{M}}_{\hat{\mathbf{u}}} \\
 &= \begin{pmatrix} 0 & M_1^{\hat{\mathbf{u}}} \cos \theta + M_3^{\hat{\mathbf{u}}} \sin \theta \\ M_3^{\hat{\mathbf{u}}} \sin \theta - M_1^{\hat{\mathbf{u}}} \cos \theta & -M_2^{\hat{\mathbf{u}}} \sin 2\theta \end{pmatrix}, \quad (1)
 \end{aligned}$$

where 2θ is the scattering angle and $\hat{\epsilon}_{i/f}$ and $\hat{\mathbf{k}}_{i/f}$ denote the directions of the incident and scattered linear polarization and wave vectors, respectively. $\hat{\mathbf{M}}_{\hat{\mathbf{u}}}$ refers to the magnetic structure factor vector in the conventional $\hat{\mathbf{u}}_i$

reference frame introduced by Blume and Gibbs³⁰ and defined in Eq. S10 of the Supplemental Material¹⁹.

As determined in the present study, the magnetic propagation vector in the antiferromagnetic state of EuCd_2As_2 is $\mathbf{q}_m = (0, 0, 0.5)$, and thus the magnetic unit cell contains only two, antiparallel, magnetic moments \mathbf{m} at fractional coordinates $\mathbf{r}_1 = (0, 0, 0)$ and $-\mathbf{m}$ at $\mathbf{r}_2 = (0, 0, 1)$. The magnetic structure factor vector in the reference frame of the crystal is therefore

$$\mathbf{M}_{\text{cryst}} = \sum_j \mathbf{m}_j \exp(i\mathbf{q}_m \cdot \mathbf{r}_j) = 2\mathbf{m}. \quad (2)$$

The determination of the magnetic structure thus reduces to the measurement of the orientation of \mathbf{m} through its projections onto the cross product of linear polarization vectors (see Eq. 1).

For a continuous rotation of the angle η of the incident linear polarization $\hat{\epsilon}_i$, a pair of diamond phase plates ($300\ \mu\text{m}$ thickness, $\approx 48\%$ transmission) is inserted in the incoming beam^{22,32}. The angle η' ($\hat{\epsilon}_f$) of linearly polarized components of the scattered beam was selected by rotation of a Cu (110) analyzer crystal (at a scattering angle of $2\theta_A \approx 90^\circ$) around $\hat{\mathbf{k}}_f$ ¹⁹. The polarization state of an x-ray beam is described by its Poincaré-Stokes vector (P_1, P_2, P_3) , as defined in the Supplemental Material¹⁹. In this REXS experiment, we measured the parameters P'_1 and P'_2 of the scattered beam as a function of the angle η of the incident linear polarization¹⁹.

We used the Quantum Espresso suite³³ to perform electronic structure calculations of EuCd_2As_2 . To treat the strong electronic correlations in the highly localized rare-earth $4f$ states, a Hubbard term $U = 3.1\ \text{eV}$ was included. This term adds an energy cost to the site-hopping of the $4f$ electrons, which yields a magnetic moment that is consistent with the spin state $S = 7/2$ of localized Eu^{2+} . To account for the possible spin splitting of the bands due to the magnetic ions, the local spin density approximation was used as the exchange correlation. Given the presence of the heavy element Cd, relativistic pseudopotentials were also implemented in the plane wave electronic structure code to account for spin-orbit coupling. A Monkhorst-Pack \mathbf{k} -point sampling mesh of $8 \times 8 \times 6$ was used³⁴.

III. EXPERIMENTAL RESULTS

A. Magnetization

The temperature- and field-dependence of the magnetization is summarized in Fig. 2. The temperature sweeps reveal a magnetic ordering transition with unusual characteristics. A strong divergence of the magnetization is seen below about 20 K, which is arrested at around 13 K. The transition to antiferromagnetic order is signaled by a sharp change in slope at around 9 K.

The magnetic behavior is consistent with previous studies^{8,16}, and had been interpreted as two distinct, consecutive, ferro- and antiferromagnetic phases by some authors⁸. However, these earlier studies had not been direction-selective. In panels (a) and (b) of Fig. 2, we compare data obtained with the magnetic field parallel to the a and c axis, respectively. This reveals that the magnetic state is strongly anisotropic, with an in-plane susceptibility about 7 times larger than the out-of-plane susceptibility. The in-plane response is also *qualitatively* different, in that it appears to saturate and form a plateau, 2–3 K above the onset of antiferromagnetism.

The comparison of temperature sweeps recorded in field-cooled (FC) and zero-field-cooled (ZFC) conditions shows a splitting, see Fig. 2 (a) and (c), which is more significant for $\mathbf{H} \perp \mathbf{c}$ ($\approx 10\%$). For this geometry, the effect is consistent with the preferred alignment of antiferromagnetic domains, as observed in our REXS study and discussed in Section IV. In-plane rotations of AFM domains would not be expected to cause a FC–ZFC splitting for $\mathbf{H} \parallel \mathbf{c}$, and the weak splitting observed in Fig. 2(c) is most likely attributable to a small misalignment of the crystal giving contamination from the $\mathbf{H} \perp \mathbf{c}$ signal. For very low applied fields, $\mu_0 H < 50\ \text{mT}$, another anomaly appears in the out-of-plane susceptibility, which is seen as an additional decrease of the signal (below about 3 K at the lowest field, 5 mT, see Fig. 2(c)). This feature has not been observed previously and its origin is presently not known.

Field sweeps of the in-plane and out-of-plane magnetization are shown in Fig. 2 (d)–(g). As had been reported previously, the saturation magnetization approaches the value of $7\mu_B$ expected for an ideal Eu^{2+} ($4f^7$, $S = 7/2$, $L = 0$) state^{8,16}. At base temperature (2 K) and with a field applied along the c -axis, this saturation is achieved already in a relatively low field of 1.55 T. The $\mathbf{H} \parallel \mathbf{c}$ curve shows no evidence for any spin-flop transitions, but there is a subtle change in slope around 200 mT (at 2 K). By contrast, the application of a mere 50 mT within the basal plane sees a jump of the magnetization to around one third of its saturation value, followed by a steep linear increase and saturation near 0.5 T. An interpretation of these characteristics is provided below, in light of the REXS results.

B. Electronic transport

In the top and bottom panels of Fig. 3, we summarize the low temperature characteristics of the longitudinal resistivity ρ_{xx} and transversal (Hall) resistivity ρ_{xy} , respectively. Above $\sim 80\ \text{K}$, the resistivity temperature sweep indicates a weak semimetallic behavior, see Fig. 3 (a) and inset. However, at lower temperatures, the resistivity increases by up to 100% and forms a sharp peak at $T_N = 9.5\ \text{K}$. This is reminiscent of the corresponding magnetization characteristics shown in Fig. 3 (a), although the anomalous increase in resistivity sets in at

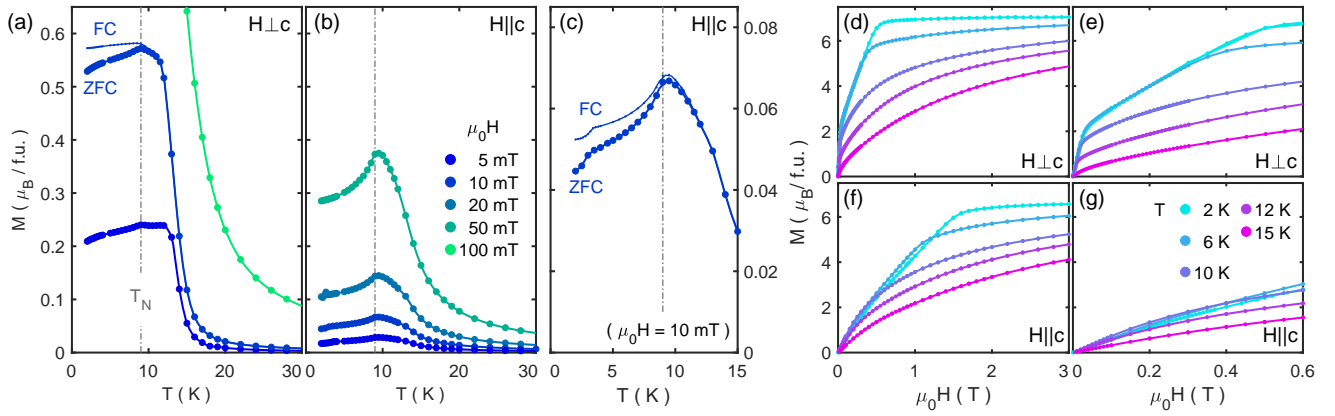


FIG. 2. (color online). Direction-resolved SQUID magnetization measurements of EuCd_2As_2 . Low-temperature thermal variation of the magnetization in magnetic fields between 5 and 100 mT applied along the (a) a axis, and (b) c axis. For 10 mT data, an enlarged comparison of field-cooled (FC) and zero-field-cooled (ZFC) data is shown in (c). All data were recorded upon warming. Field sweeps of the magnetization at temperatures between 2 and 15 K, in a field oriented (d) within the basal plane and (f) almost parallel to the c axis. Panels (e) and (g) give a magnified view of the respective low-field data.

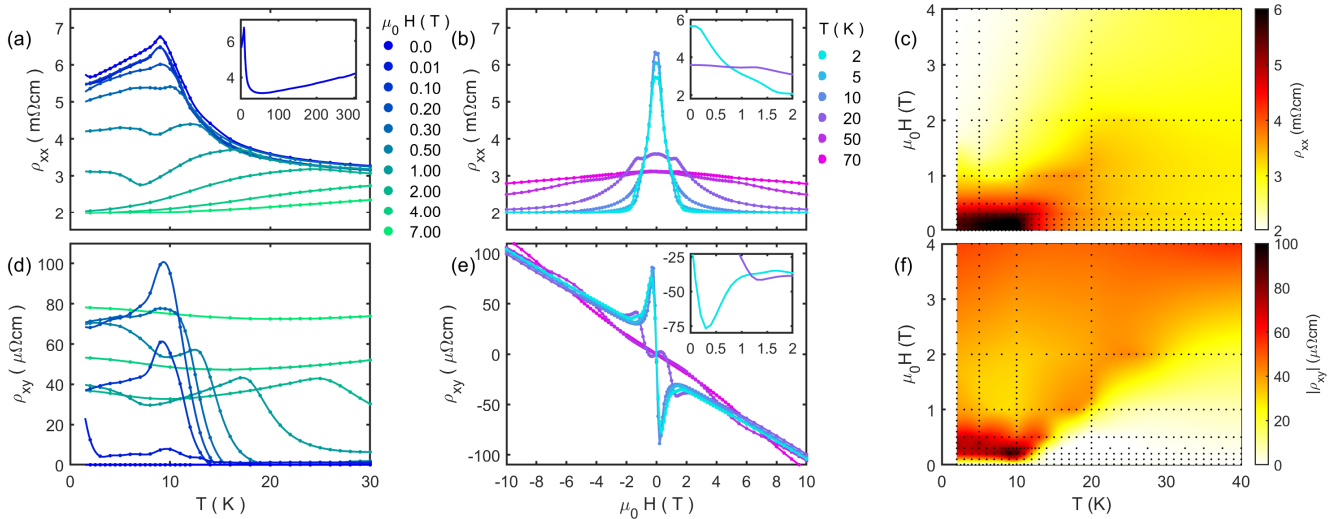


FIG. 3. (color online). Alternating current six-point electronic transport data of EuCd_2As_2 , recorded with a 5 mA, 30 Hz excitation and magnetic fields applied along the c axis. The characteristics of the in-plane longitudinal resistivity ρ_{xx} , and transversal (Hall) resistivity ρ_{xy} are summarized in the top and bottom panels, respectively. (a),(d) Thermal variation at magnetic fields between 0 and 7 T. (b),(e) Field sweeps at temperatures between 2 and 70 K. The insets give a magnified view of subtle features in the low temperature data. (c),(f) Phase diagrams represented by color maps of interpolated data. Black markers indicate the actual location of data points.

even higher temperatures $\approx 50 \text{ K} \approx 5 T_N$. When a magnetic field is applied (out-of-plane), this resistivity peak splits into two broad features: one with a leading edge that moves to higher temperatures in higher fields, and another, separated by a dip (minimum) of ρ_{xx} . By comparison with the magnetization data, it can be inferred that this minimum corresponds to the magnetic phase boundary, and, accordingly, disappears with the complete spin alignment at 1.55 T — see Fig. 2 (f).

The field sweeps of this resistivity signal, Fig. 3 (b), emphasize a strong negative magnetoresistance, corresponding to a $\approx 75\%$ reduction of the measured signal at 2 K. Within the magnetically ordered phase, the nega-

tive magnetoresistance is clearly associated with the spin-alignment, as it abruptly ends at the magnetization saturation field of 1.55 T. Another magnetoresistive feature is observed at temperatures *above* the ordering transition. It does not set in continuously, but is delineated by a clear kink in the field sweep — see data for 20 K in Fig. 3 (b).

The features discussed above can all be recognized in the phase diagram of interpolated resistivity data presented in Fig. 3 (c). Here, the magnetically ordered phase corresponds to a dark patch with a black-to-orange gradient. The regime of strong negative magnetoresistance appears as a yellow-to-white gradient and forms a diago-

nal phase line from the ordered phase towards high fields and high temperatures.

The characteristics of the Hall resistivity are summarized in the corresponding lower panels (d)–(f) of Fig. 3 and are governed by a similar phase diagram. In particular, the effective charge transport is hole-like and is superposed by *two* anomalous contributions: one which is confined to the magnetically ordered phase, and a distinct Hall contribution associated with the spin-polarized state for $T > T_N$, which is clearly delineated by a diagonal phase line.

C. REXS

Upon cooling below T_N , scans along high-symmetry directions in reciprocal space revealed that the magnetic propagation vector in EuCd_2As_2 is $\mathbf{q}_m = (0, 0, 0.5)$. This is consistent with other magnetic materials of the same structural family for which neutron studies have been possible, such as EuMn_2P_2 [35] and EuAl_2Si_2 [36]. We did therefore not perform a systematic search for additional propagation vectors. In Fig. 4(a), constant wave vector energy scans at the $(0, 0, 3.5)$ reflection (measured without polarization analysis) are compared with the x-ray fluorescence measured at a scattering angle $2\theta = 90^\circ$, where charge scattering vanishes. This signal, which is equivalent to an x-ray absorption (XAS) measurement, shows no indication of the Eu^{3+} valence (this would be associated with a peak about 8 eV above the Eu^{2+} L_3 absorption maximum³⁷). In addition to this fluorescence contribution, the intensity at the $(0, 0, 3.5)$ position features a Lorentzian-like peak resonating in the pre-edge region at 6972 eV. This photon energy was selected for the remainder of the experiment.

After locating the magnetic Bragg peaks, we tracked the field- and temperature dependence of integrated magnetic intensities in the $\pi\sigma'$ and $\pi\pi'$ polarization channels. Given the form of the scattering amplitude, Eq. (1) (with reference to the $\hat{\mathbf{u}}_i$ reference frame¹⁹), these channels probe magnetic Fourier components parallel and perpendicular to the scattering plane, respectively. Fig. 4(b) shows the thermal variation of these integrated intensities for the $(4, 0, -0.5)$ peak, in zero field and for 0.5 T applied 5° away from the c axis.

The intensity in the $\pi\sigma'$ channel follows a clear order parameter behavior, as described by a power law. The obtained Néel temperatures are $T_N = 8.43(3)$ K (0 T) and 8.08(2) K (0.5 T). By attenuating the beam, we confirmed that the reduction by ≈ 1 K from the expected value is due to beam heating. We note that beam heating did *not* affect the FLPA scans (discussed below), since the beam is attenuated by insertion of the phase plates. The critical exponent obtained from the power-law fit is $\beta = 0.34(1)$ (0 T). This agrees with the values expected for the 3D Ising model ($\beta = 0.3250$) or 3D XY-antiferromagnet ($\beta = 0.3460$). This points to a three-dimensional character of the antiferromagnetic state in

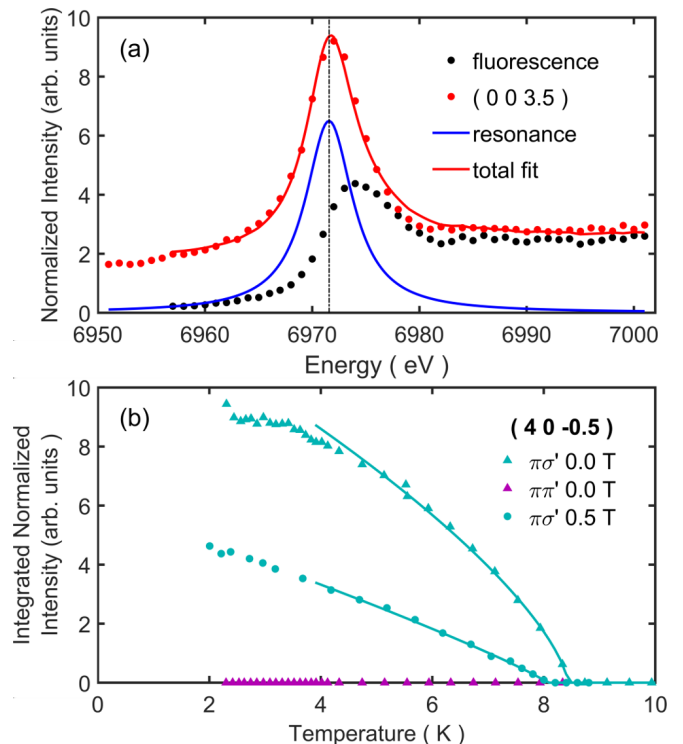


FIG. 4. (color online). (a) Energy scans at the $\text{Eu } L_3$ resonance, recorded without polarization analysis of the scattered beam. The magnetic resonance at the $(0, 0, 3.5)$ reflection can be decomposed into a contribution due to x-ray fluorescence (black markers) and a Lorentzian peak centered in the pre-edge region, at 6972 eV. (b) Thermal variation of the $(4, 0, -0.5)$ integrated peak intensity, recorded at zero field and with 0.5 T applied along the c axis. The solid lines indicate fits of a power law $(T_N - T)^{2\beta}$ to the data ($T_N = 8.43(3)$, $\beta = 0.34(1)$ for $\pi\sigma'$ at 0 T). In the $\pi\pi'$ channel no magnetic peak is observed.

EuCd_2As_2 ³⁸, although β may also be slightly altered by beam heating.

In the $\pi\pi'$ channel, no magnetic Bragg peak is observed at the $(4, 0, -0.5)$ position. This indicates that there are no sizable \mathbf{q}_m magnetic Fourier components perpendicular to the scattering plane, i.e. parallel to the c -axis.

The field dependences of three magnetic peaks at base temperature (2.3 K) are shown in Fig. 5. Again, the $(0, 0, 4.5)$ and $(1, 0, 5.5)$ peaks correspond to an in-plane magnetic field, whereas for $(4, 0, -0.5)$, the c axis is directed 5° away from the magnetic field axis. Both $\mathbf{H} \perp \mathbf{c}$ -type peaks, Figs. 5 (a) and (b), show a transition at a low field of ≈ 50 mT, where magnetically scattered intensity changes abruptly from the $\pi\pi'$ to the $\pi\sigma'$ channel. As noted above, this implies a switching of antiferromagnetic Fourier components, which are initially perpendicular to the scattering plane, into the scattering plane. By 0.5 T applied in-plane, the $\pi\sigma'$ intensity has also completely disappeared. At this point the sample is fully spin-polarized, i.e. all magnetic intensity would be located at the Γ point of the Brillouin zone.

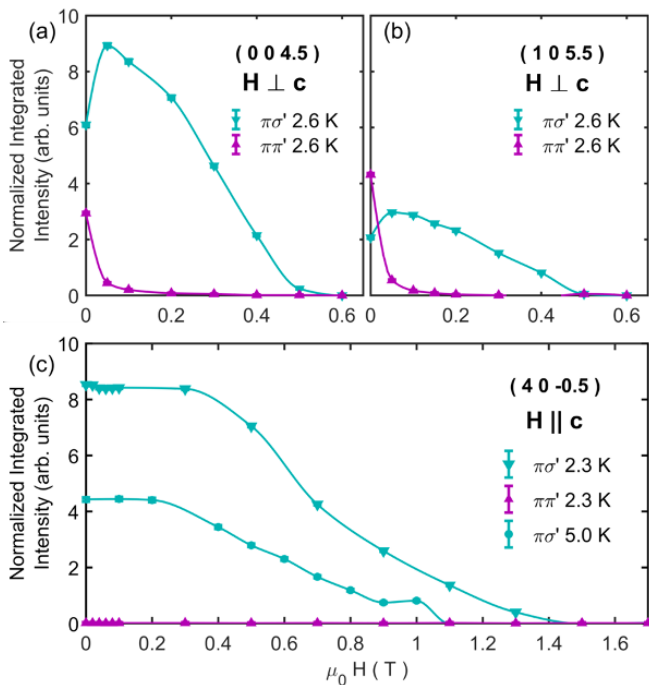


FIG. 5. (color online). Field dependence of EuCd_2As_2 resonant magnetic x-ray scattering observed in the $\pi\sigma'$ and $\pi\pi'$ polarization channels. (a)–(b) For fields applied in the a - b plane of the crystal, the scattered intensity abruptly switches from $\pi\pi'$ to $\pi\sigma'$ character at ≈ 50 mT and is then fully suppressed at ≈ 0.5 T. (c) When a magnetic field is applied parallel to the c axis, ≈ 1.5 T is required to fully spin-polarize the sample. Solid lines are intended as visual guides.

A different behavior is observed for the almost $\mathbf{H} \parallel \mathbf{c}$ -like situation shown in Fig. 5 (c). Here, no magnetic intensity is observed in the $\pi\pi'$ channel, i.e. the magnetic structure has no $\mathbf{q}_m = (\mathbf{0}, \mathbf{0}, 0.5)$ Fourier component perpendicular to the scattering plane. The intensity in the $\pi\sigma'$ channel varies little up to ≈ 0.4 T and then decreases monotonically. By contrast to panels (a) and (b), a much larger field of ≈ 1.5 T is required to fully spin-polarize the material (at 2.3 K), which is consistent with the magnetization field sweeps shown above in Figs. 2 (d)–(g).

The two left columns of Figs. 6 ($\mathbf{H} \perp \mathbf{c}$) and 7 ($\mathbf{H} \parallel \mathbf{c}$) show the Stokes parameters P'_1 and P'_2 and degree of linear polarization $P'_{\text{lin}} = \sqrt{P'^2_1 + P'^2_2}$ describing the polarization state of x-rays scattered at two magnetic reflections, at zero field (top row), and with increasing strength of an applied magnetic field (second and third row). These measurements were all performed at base temperature (≈ 2.3 K). The determination of the Stokes vector (P'_1, P'_2) from full polarization analysis is discussed in the Supplemental Material¹⁹. Due to our observation of an anomaly at $T \approx 3$ K in the magnetic susceptibility data (see Fig. 2) we investigated specifically the possibility of a distinct low-temperature magnetic phase at zero field. However, we did not observe any variation in the polarization characteristics of the magnetic scattering (at

zero field). Nevertheless, the possibility of some weak remaining beam heating to $T > 3$ K (with phase retarding plates in the beam) cannot be excluded.

As a first observation, several datasets [Figs. 6 (a),(b) and 7 (a), (b), (e), (f), (i), (j)] show a significant reduction in the degree of linear polarization of the scattered beam (P'_{lin} , see green markers). We identified two causes that contribute to this effect.

Firstly, the effective observed Stokes parameters may vary if the signal is contaminated by diffuse charge scattering contributions. This adds to the dipole scattering amplitude, Eq. (1), a term of the form³¹

$$\hat{\epsilon}_f \cdot \hat{\epsilon}_i = \begin{pmatrix} 1 & 0 \\ 0 & \hat{\mathbf{k}}_f \cdot \hat{\mathbf{k}}_i \end{pmatrix} = \begin{pmatrix} 1 & 0 \\ 0 & \cos 2\theta \end{pmatrix}. \quad (3)$$

The effect therefore becomes important for peaks at large scattering angles when the sample is almost spin-polarized and when antiferromagnetic scattering is weak. In Section 7 of the Supplemental Material¹⁹, we illustrate this effect by comparison of 2θ -scans at the (4, 0, -0.5) position (at $2\theta = 136.6^\circ$), in the $\pi\pi'$ and $\pi\sigma'$ polarization channels. At 1 T, corresponding to the FLPA shown in Fig. 7 (i), the background intensity in the $\pi\pi'$ channel is about 7% of the magnetic signal seen in $\pi\sigma'$. In fact, when considering panels (a), (b), (e), (f), (i), (j) of Fig. 7, it can be recognized that the Stokes parameter P'_1 continuously becomes more “ $\cos 2\eta$ -like” and P'_2 becomes more “ $-\sin 2\eta$ -like” as the magnetic field is applied. In effect, these anti-phase contributions decrease the amplitudes of both P'_1 and P'_2 , and so $P'_{\text{lin}} = \sqrt{P'^2_1 + P'^2_2}$ is no longer unity.

Nevertheless, these background contributions do not account for the decrease in P'_{lin} in the case of Fig. 7 (a) and (b), where the magnetic intensity is dominating the observed signal. We find that this can be modeled by taking into account the formation of magnetic domains in EuCd_2As_2 . In general, it must be expected that a zero-field-cooled sample will contain all symmetry-equivalent magnetic domains, the scattered intensities of which add. Antiphase signals from different domains can thus introduce circular components to the scattered beam. For trigonal EuCd_2As_2 , three equivalent magnetic domains would be expected if the magnetic moments are not aligned strictly along the c axis.

IV. ANALYSIS AND INTERPRETATION

Taking into account the above considerations, our experimental results can be explained as follows [see panels (d,h,l) of Figs. 6 and Fig. 7]. The magnetic structure of EuCd_2As_2 consists of ferromagnetic layers which are stacked antiferromagnetically, in other words, an A-type antiferromagnet. Even though the Eu^{2+} state has no orbital angular momentum, the magnetic moments experience a weak magnetocrystalline and/or dipolar anisotropy which favors spin alignment along specific directions in the a - b plane, as already illustrated in Fig. 1.

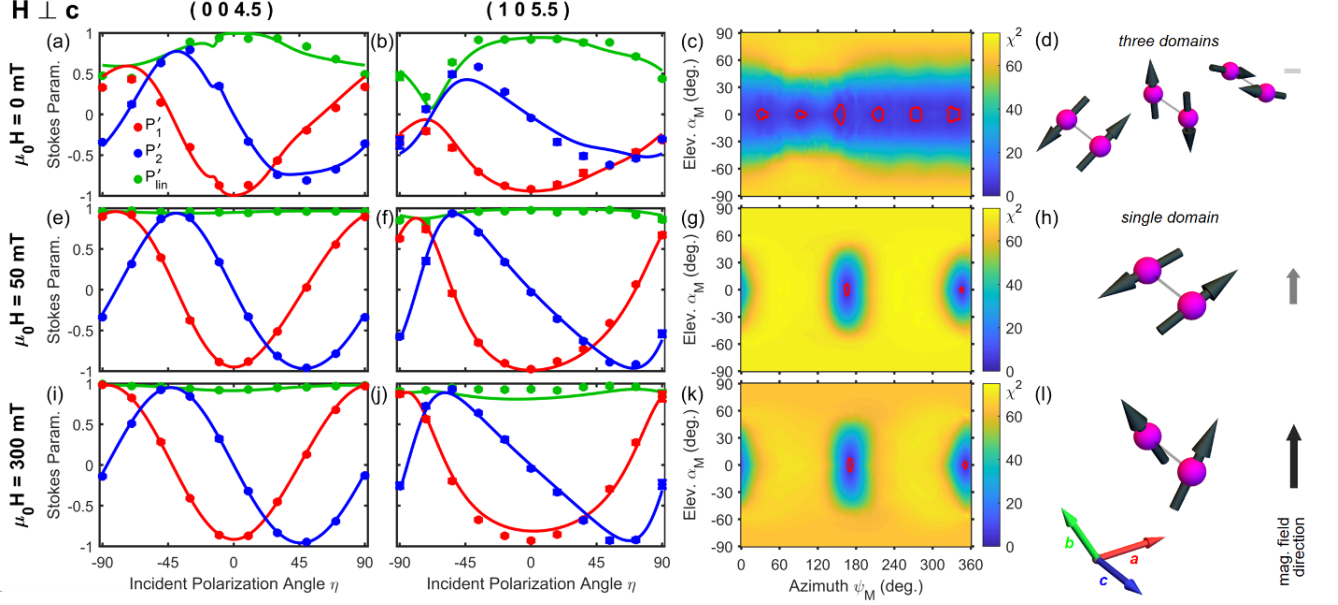


FIG. 6. (color online). Full polarization analysis of the $(0, 0, 4.5)$ and $(1, 0, 5.5)$ magnetic reflections of EuCd_2As_2 , in zero field (top row) and with magnetic fields of 50 and 300 mT applied within the ab plane (middle and bottom rows). The left columns show the best fits (lines) to the Stokes parameters P'_1 , P'_2 and $P'_{\text{lin}} = \sqrt{P'^2_1 + P'^2_2}$ extracted from the polarization scans. Panels (c), (g) and (k) show the corresponding χ^2 maps of least squares fits performed with the angles (ψ_M, α_M) held fixed (discussion cf. main text). Panels (d), (h) and (l) illustrate the respective moment directions in adjacent layers. Where applicable, the three magnetic domains are indicated.

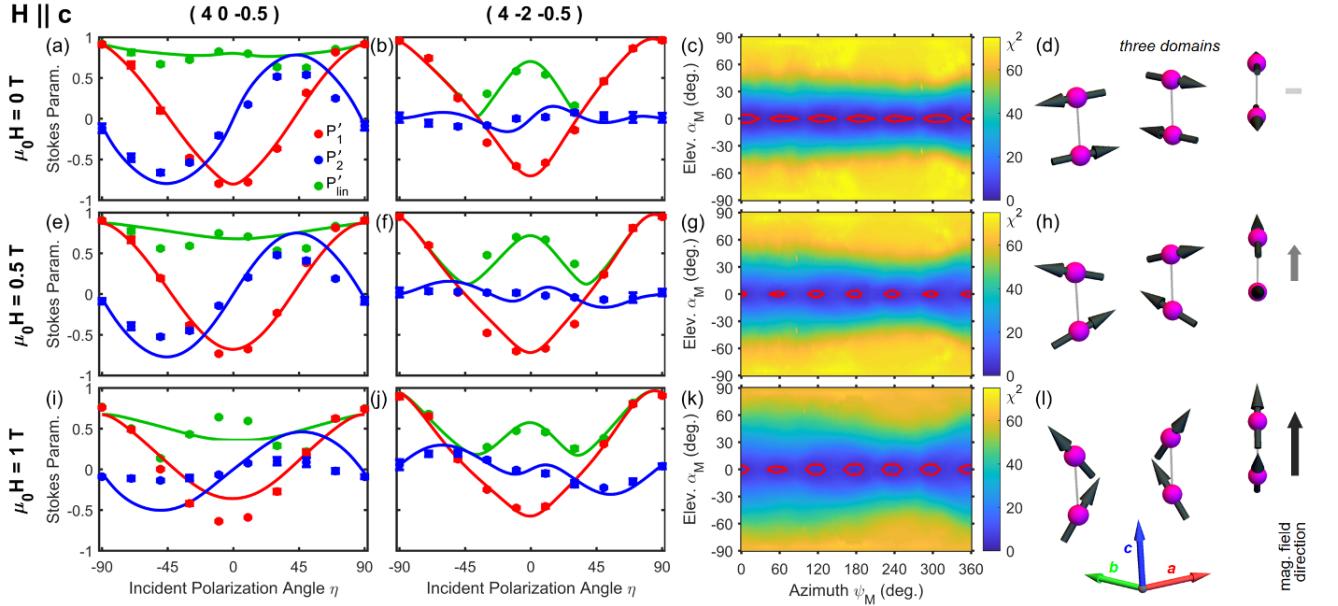


FIG. 7. (color online). Full polarization analysis of the $(4, 0, -0.5)$ and $(4, -2, -0.5)$ magnetic reflections of EuCd_2As_2 , in zero field and with magnetic fields of 0.5 and 1 T applied almost parallel to the c axis. The figure is organized in analogy to Fig. 6. In all cases, fits using three domains were superior to models using a single domain or an isotropic distribution of azimuthal moment orientations. In applied fields, the magnetic intensity at the $\mathbf{q}_m = (0, 0, 0.5)$ magnetic Bragg peaks subsides and the relative intensity of diffuse charge scattering becomes substantial. Due to these increasing background contributions in the $\pi\pi'$ and $\sigma\sigma'$ channels, the Stokes parameter fit quality deteriorates at higher fields.

The trigonal crystal symmetry generates three equivalent antiferromagnetic domains, related by 120° rotation (i.e. six possible orientations of the spins), and if the domains are smaller than the volume of the sample probed by the x-rays, then the measured magnetic scattering intensity will be a sum of the intensities for each domain, weighted by the population of each domain.

For each pair of FLPA scans in Figs. 6 and 7, we show a χ^2 map of least squares fits with fixed magnetic moment directions [see panels (c,g,k)]. We represent the orientation of the $\mathbf{q}_m = (0, 0, 0.5)$ Fourier component of the magnetic structure by the azimuth and elevation (ψ_m, α_m) in an orthonormal reference frame determined by the crystallographic a and c axes. These angles are defined and illustrated in Section 5 of the Supplemental Material¹⁹, where we also describe the transformation of $\mathbf{m}_{\text{cryst}}$ to the $\hat{\mathbf{u}}_i$ reference-frame. Red contours imposed onto these χ^2 maps delineate the parameter range corresponding to one standard deviation from the best fit parameters.

For zero applied field, both measurements (panels (a)–(b) of Figs. 6 and 7) yielded superior fits when the three-fold domain population was allowed to vary. The quality of the fits allows us to exclude definitively the possibility that the magnetic moments have a significant out-of-plane antiferromagnetic component. On the other hand, the fits do not reveal a unique azimuthal orientation ψ_m . Instead, the two crystals investigated favor different orientations, with best fits at $\psi_m \approx 37^\circ$ and $\psi_m \approx 0^\circ$ for the $\mathbf{H} \perp \mathbf{c}$ and $\mathbf{H} \parallel \mathbf{c}$ samples, respectively (see red contour lines in panels (c) of Figs. 6 and 7). This may indicate a lack of significant in-plane anisotropy, or a dependence on sample history. Nevertheless, in all cases, it was *not* possible to obtain an improved fit to the data with a continuous (i.e. not three-fold discrete) distribution of azimuthal moment directions.

When a 50 mT in-plane magnetic field is applied, Fig. 6 (e)–(h), P'_{lin} is restored to unity throughout and the Stokes parameters can be perfectly reproduced by a one-domain model with the magnetic moments aligned almost perpendicular to the applied field (which happens to be close to the a axis in this experiment). This behavior corresponds to a spin-flop-like redistribution of domain populations, before all moments can be continuously canted into the field direction. The small magnitude of the magnetic field which effects this *domain-flop* reflects the weakness of the dipolar coupling between antiferromagnetic domains. This model also naturally explains the $\mathbf{H} \perp \mathbf{c}$ field sweeps shown in Fig. 5 (a,b) and discussed above. Increasing the in-plane field to 300 mT, see Fig. 6 (i)–(l), suppresses the antiferromagnetic Bragg peaks as the moments cant towards the field direction and intensity is redistributed to the Brillouin zone center, but the Stokes parameter scans are hardly changed.

As expected in this model, the selection of a single domain does not occur if the field does not break the

three-fold symmetry. Accordingly, all results shown in Fig. 7 were better modeled by imposing the three-fold domain structure. However, since this crystal was actually mounted with the c axis tilted 5° from the magnet axis, one domain (the only direction in which the magnetic moments lie both in the a - b plane and in the scattering plane) is clearly favored by the fits. As the out-of-plane field is successively increased to 0.5 and 1 T, the favored moment direction (close to the a axis) does not change. Instead, the continuous change in Stokes parameter characteristics is attributed to the increasing relevance of the diffuse charge scattering background, as the magnetic intensity subsides.

V. DISCUSSION

In EuCd_2As_2 , the in-plane ferromagnetic correlations are expected to be much stronger than the inter-plane antiferromagnetic exchange interactions (six in-plane ferromagnetic nearest neighbors *vs.* two more distant antiferromagnetic neighbors along the c axis). This explains the continuous onset of short-range in-plane ferromagnetic correlations that starts at $T \gg T_N$, Fig. 2 (a)–(b), and leads to an incipient ferromagnetic-like transition, before the pre-formed ferromagnetic planes lock into an antiferromagnetic stacking at T_N .

We find that the magnetic susceptibility of EuCd_2As_2 at $T \lesssim T_N$ is about 7 times larger for magnetic fields applied in the a - b plane than for fields along the c axis. For a conventional antiferromagnet, it is expected that the magnetic state is *softer* for magnetic fields applied perpendicular to the moment direction. On this basis one might therefore infer an out-of-plane moment direction (as done by Wang *et al.*¹⁷). However, in the present case, the magnetic moments are actually lying in the a - b plane, and, owing to the three-fold domain structure, EuCd_2As_2 can avoid a conventional spin-flop transition irrespective of the field direction. Instead, the anisotropy of the susceptibility is mainly a measure of the easy-plane anisotropy and the fact that the spins point in different in-plane directions within each domain. The easy-plane anisotropy is also reflected in the fact that the saturation field is smaller for $\mathbf{H} \perp \mathbf{c}$ than for $\mathbf{H} \parallel \mathbf{c}$ (0.5 T *vs.* 1.5 T).

It is interesting to consider the resistivity and Hall resistivity characteristics in the light of this model. For small applied fields, anomalous Hall effect (AHE) contributions in the multi-domain state will cancel. On the other hand, at sufficiently large fields that the in-plane ferromagnetic order becomes ferromagnetically aligned in the c direction, a sizable anomalous Hall effect would be expected, both above and below the (3D) magnetic ordering temperature³⁹. With increasing thermal fluctuations, the alignment of pre-formed 2D ferromagnetic planes will require stronger applied fields, which explains the diagonal phase line observed in Fig. 3 (f). If the full spin alignment reduces the scattering of charge carriers from

magnetic fluctuations, the above ρ_{xy} argument simultaneously explains the corresponding “inverse” ρ_{xx} phase diagram of Fig. 3 (c).

On the other hand, this explanation does *not* encompass the transport characteristics *within* the antiferromagnetically ordered phase. Contrary to observation, no large AHE contribution would be expected in the antiferromagnetic state (but only when a significant net ferromagnetic component is induced by an applied magnetic field). The insets of Figs. 3 (b) and (e) show both large longitudinal and transversal resistivity contributions that are effectively proportional to the antiferromagnetic component measured by REXS, see Fig. 5 (c). This implies a more subtle coupling between the magnetic state and the electronic transport.

VI. AB INITIO ELECTRONIC STRUCTURE

Density functional calculations of the $\mathbf{q}_m = (0, 0, 0.5)$ A-type antiferromagnetic state of EuCd_2As_2 were performed in the magnetic unit cell (i.e. in a cell doubled along the c axis relative to the crystallographic cell). The orientation of the in-plane Eu magnetic moments was defined as shown in Fig. 1 (a). In Fig. 8 we show the calculated electronic band dispersion along high-symmetry directions in the Brillouin zone. At binding energies between 1.5–2.0 eV, the system is dominated by weakly dispersing Eu 4*f* bands. This suggests that these electrons are strongly localized, which is consistent with the prevailing picture for divalent Eu. The calculated ordered magnetic moment per Eu of the 4*f* states is $\mu = 6.93 \mu_B$, corresponding to $\mu_{\text{eff}} = 7.86 \mu_B$, in good agreement with the estimates from magnetometry.

This binding energy of Eu 4*f* bands is highly sensitive to the magnitude of the Hubbard-like U parameter^{41,42}. As typically seen in DFT calculations⁴³, neglect of the electronic correlations U would lift the 4*f* bands to the Fermi level. Under these circumstances, one would predict EuCd_2As_2 to be a good metal^{44–46}. Indeed, earlier computational work by Zhang *et al.* suggested that this is the case in isostructural EuCd_2Sb_2 , see Refs. 15 and 47. This scenario is appealing, because it allows to attribute magnetoresistive effects to the shifting of the Eu 4*f* bands across the Fermi level, i.e. the magnetic bands would themselves contribute to the charge transport.

However, preliminary ARPES measurements on EuCd_2As_2 have ruled out this possibility⁴⁸. Instead, the 4*f* bands are observed ≈ 1.5 eV below the Fermi level, and we have used a Hubbard parameter $U = 3.1$ eV to reflect this in our calculation. This is also consistent with the semimetallic in-plane and inter-plane behavior of EuCd_2As_2 that was previously reported by Wang *et al.*⁴⁹. The orbital character analysis of our density functional study confirms that the conduction and valence bands are dominated by the Cd 5*s* and As 4*p* states, respectively (see Section 8 of the Supplemental Material¹⁹). This implies that charge transport is confined to the Cd–

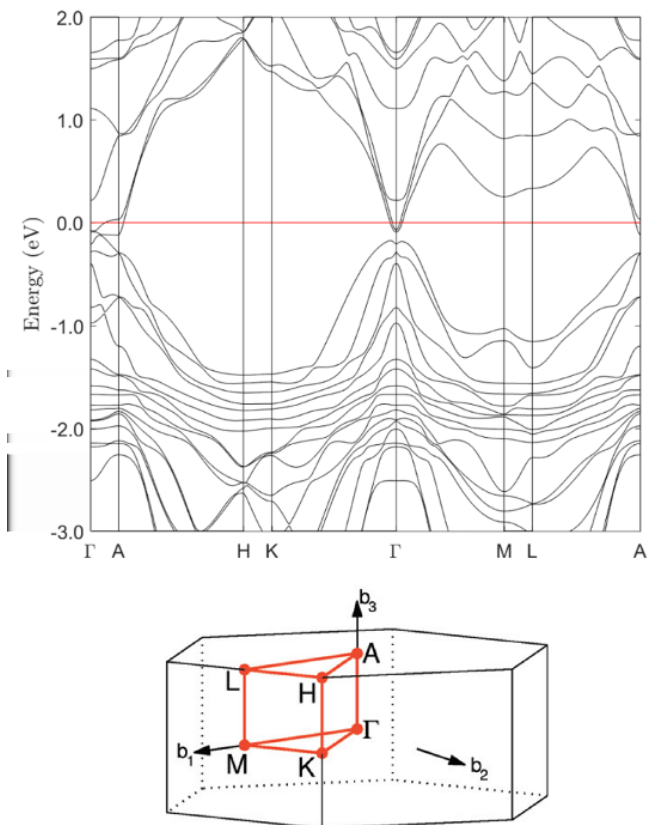


FIG. 8. (color online). Calculated electronic structure of EuCd_2As_2 along high symmetry lines of reciprocal space. The conventional labeling of high symmetry points in the Brillouin zone of the hexagonal lattice is indicated below⁴⁰.

As double-corrugated trigonal layers, which are spaced by insulating magnetic Eu layers.

Our calculations also show that the conduction and valence bands exhibit a two-fold degeneracy without spin splitting, despite the presence of the magnetic Eu species. Moreover, due to the strong spin–orbit coupling in the heavy-element Cd–As sublattice, these bands are inverted at the Γ point in the Brillouin zone, i.e. at this point the bands with Cd 5*s* orbital character reside below that with As 4*p* character. All these qualities bear striking resemblance to those of the three-dimensional topological Dirac semimetal Cd_3As_2 : (1) the electronic properties are determined by the Cd 5*s* and As 4*p* states, (2) there is an inversion of the aforementioned bands at the Γ point, and (3) the bands are all doubly-degenerate^{2,6,50}.

In light of these analogies, we searched the Brillouin zone for similar topologically non-trivial features to those found in Cd_3As_2 , and indeed identified a linear band crossing along the Γ –A high symmetry line at $k_z = \pm 0.16 \text{ \AA}^{-1}$, with a gap of ≈ 10 meV, see Fig. 9 (a)–(c). This energy gap is not induced by broken time-reversal symmetry because spatial inversion symmetry is simultaneously broken in EuCd_2As_2 , and so the product of

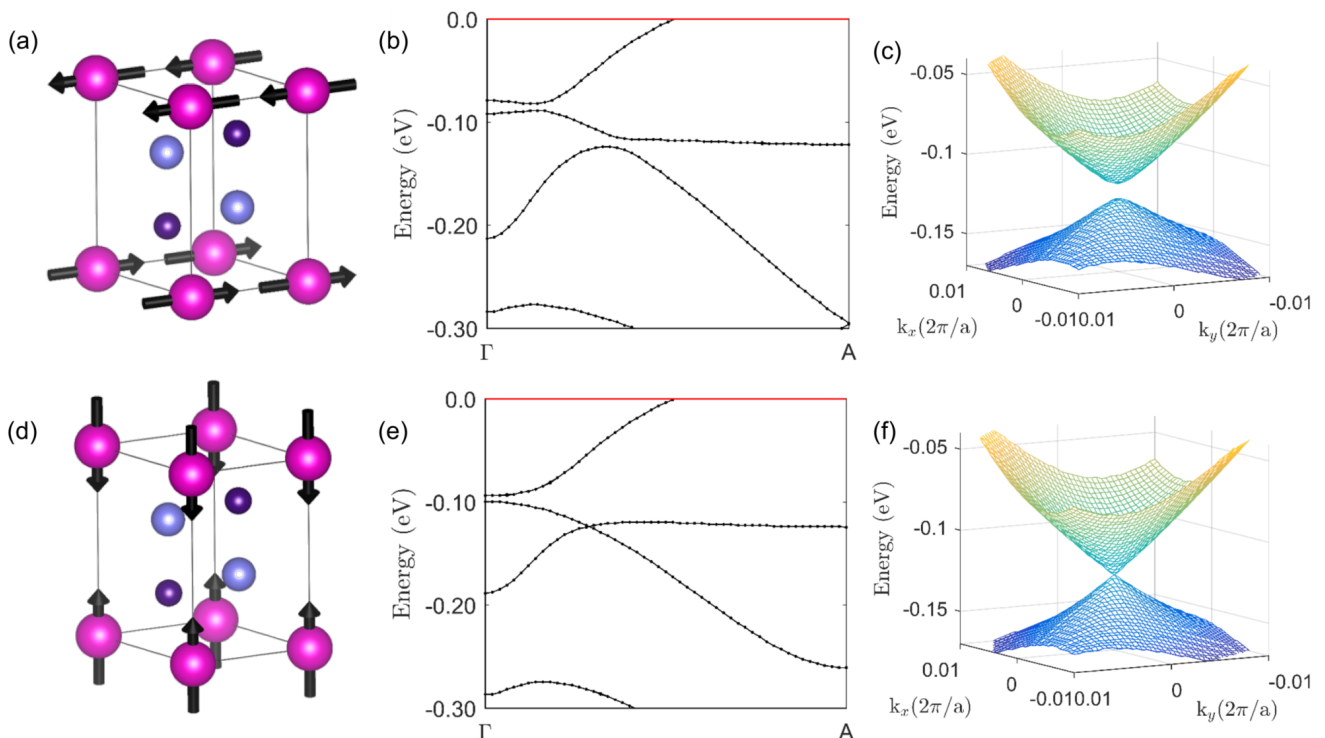


FIG. 9. (color online). Calculated electron bands near E_F for A-type antiferromagnetic order in EuCd_2As_2 . (a)–(c) Spins lying in the a – b plane, as found experimentally, and (d)–(f) spins along the c axis. The calculated dispersion $E(k_z)$ along the Γ – A high symmetry line corresponding to these magnetic states is presented in (b) and (e), and detailed views of $E(k_x, k_y)$ in the vicinity of the Dirac band crossing are shown in (c) and (f). This crossing is gapped for in-plane spins, as shown in (c), but is protected by C_3 symmetry for spins parallel to the c axis resulting in Dirac points at $\mathbf{k} = \pm(0, 0, 0.16)$, as shown in (f).

the two symmetries is conserved. Instead, this gap arises because the C_3 symmetry along the Γ – A line which protects the Dirac crossing point is broken by the magnetic order in which, as found here, the spins lie parallel to the a – b plane. This gap will close if the C_3 symmetry is preserved, e.g. for a magnetic structure in which the spins lie along the c -axis as shown in Fig. 9(d)–(f). As the spins lie in the a – b plane this result suggests that the magnetic ground state of EuCd_2As_2 does not harbor massless Dirac fermions. The extent to which massive Dirac fermions influence the transport in EuCd_2As_2 remains to be established and, in addition, the possibility of surface states due to the non-trivial topology in the electronic structure cannot be excluded⁵¹.

VII. CONCLUSIONS

In conclusion, by comprehensive REXS experiments in applied magnetic fields, we have formed a consistent picture of the magnetic ground state of EuCd_2As_2 . This demonstrates a successful application of REXS, in a material where neutron diffraction would be very difficult without isotopic enrichment with both Eu-153 and Cd-114. Using our understanding of the magnetic order we demonstrated that several distinct features in the resis-

tivity can be understood in terms of field-induced domain alignment and/or spin reorientation.

Recently, Wang *et al.* reported an electrical and optical conductivity study of EuCd_2As_2 in which, based on resistivity measurements, an out-of-plane magnetic moment direction was postulated¹⁷. The present findings show conclusively that the spins in fact lie in the a – b plane.

It will be of great interest to perform photoemission and quantum oscillation measurements on EuCd_2As_2 to corroborate our computational study of the band topology and to establish the extent to which Dirac-like fermions influence the charge transport. Our results suggest that the CaAl_2Si_2 structure could host Dirac fermions that couple to a magnetically-ordered state at zero field. A possible route to achieve this is to search for related rare-earth based magnetic materials in which the magnetic order preserves the C_3 symmetry along the Γ – A line.

Note added: During the preparation of this manuscript a preprint appeared⁵¹ in which electronic structure calculations were reported for EuCd_2As_2 . The authors consider various possible magnetic structures, though not the one found in our experiments. The authors do investigate the A-type antiferromagnetic structure with moments aligned parallel to the c axis, Fig. 9(d), and for this case the calculated band dispersion in Ref. 51 is

consistent with our results shown in Figs. 9 (e)–(f).

ACKNOWLEDGMENTS

The authors would like to thank Dr. Roger Johnson, Dr. Niels Schröter, Dr. Fernando de Juan and Prof. Yulin Chen (Oxford) for useful discussions. We are also grateful to Dr. David Johnston (Ames Laboratory) for helpful comments and to David Reuther (DESY) for technical

support. This work was supported by the U.K. Engineering and Physical Sciences Research Council (grant no. EP/J017124/1), the Chinese National Key Research and Development Program (2016YFA0300604) and the Strategic Priority Research Program (B) of the Chinese Academy of Sciences (Grant No. XDB07020100). Part of this research was carried out at PETRA-III at DESY, a member of Helmholtz Association (HGF). MCR is grateful to the Oxford University Clarendon Fund for the provision of a studentship, and to the LANL Director’s Fund and the Humboldt Foundation for financial support.

-
- * Present affiliation: Los Alamos National Laboratory, Los Alamos, New Mexico 87545, USA; rahn@lanl.gov
- † Present affiliation: London Centre for Nanotechnology and Department of Physics and Astronomy, University College London, London WC1E 6BT, United Kingdom
- ‡ Present affiliation: Advanced Photon Source, Argonne National Laboratory, 9700 S. Cass Avenue, Argonne, IL 60439, USA
- § Present affiliation: Paul Scherrer Institut, 5232 Villigen, Switzerland
- ¶ a.boothroyd@physics.ox.ac.uk
- ¹ Z. K. Liu, J. Jiang, B. Zhou, Z. J. Wang, Y. Zhang, H. M. Weng, D. Prabhakaran, S.-K. Mo, H. Peng, P. Dudin, T. Kim, M. Hoesch, Z. Fang, X. Dai, Z. X. Shen, D. L. Feng, Z. Hussain, and Y. L. Chen, *Nat. Mater.* **13**, 677 (2014).
 - ² M. Neupane, S.-Y. Xu, R. Sankar, N. Alidoust, G. Bian, C. Liu, I. Belopolski, T.-R. Chang, H.-T. Jeng, H. Lin, A. Bansil, F. Chou, and M. Z. Hasan, *Nat. Commun.* **5**, 3786 (2014).
 - ³ A. Bansil, H. Lin, and T. Das, *Rev. Mod. Phys.* **88**, 021004 (2016).
 - ⁴ N. P. Armitage, E. J. Mele, and A. Vishwanath, *Rev. Mod. Phys.* **90**, 015001 (2018).
 - ⁵ H. Li, H. He, H.-Z. Lu, H. Zhang, H. Liu, R. Ma, Z. Fan, S.-Q. Shen, and J. Wang, *Nat. Commun.* **7**, 10301 (Li2016).
 - ⁶ Z. Wang, H. Weng, Q. Wu, X. Dai, and Z. Fang, *Phys. Rev. B* **88**, 125427 (2013).
 - ⁷ L. Šmejkal, J. Železný, J. Sinova, and T. Jungwirth, *Phys. Rev. Lett.* **118**, 106402 (2017).
 - ⁸ A. Artmann, A. Mewis, M. Roepke, and G. Michels, *Zeitschrift für anorganische und allgemeine Chemie* **622**, 679 (1996).
 - ⁹ Z. Ren, Z. Zhu, S. Jiang, X. Xu, Q. Tao, C. Wang, C. Feng, G. Cao, and Z. Xu, *Phys. Rev. B* **78**, 052501 (2008).
 - ¹⁰ U. B. Paramanik, P. L. Paulose, S. Ramakrishnan, A. K. Nigam, C. Geibel, and Z. Hossain, *Superconductor Science and Technology* **27**, 075012 (2014).
 - ¹¹ K. Guo, Q. Cao, and J. Zhao, *Journal of Rare Earths* **31**, 1029 (2013).
 - ¹² W. Min, K. Guo, J. Wang, and J. Zhao, *J. Rare Earths* **33**, 1093 (2015).
 - ¹³ J. Jiang and S. M. Kauzlarich, *Chemistry of Materials* **18**, 435 (2006), <https://doi.org/10.1021/cm0520362>.
 - ¹⁴ Y. Goryunov, V. Fritsch, and v. H., *J. Phys. Conference Series* **391**, 012015 (2012).
 - ¹⁵ H. Zhang, L. Fang, M.-B. Tang, H.-H. Chen, X.-X. Yang, X. Guo, J.-T. Zhao, and Y. Grin, *Intermetallics* **18**, 193 (2010).
 - ¹⁶ I. Schellenberg, U. Pfannenschmidt, M. Eul, C. Schwickert, and R. Pöttgen, *Z. Anorg. Allg. Chem.* **637**, 1863 (2011).
 - ¹⁷ H. P. Wang, D. S. Wu, Y. G. Shi, and N. L. Wang, *Phys. Rev. B* **94**, 045112 (2016).
 - ¹⁸ Agilent Technologies XRD Products, “SuperNova X-ray Diffractometer System - User Manual (2014),”.
 - ¹⁹ Supplemental Material available online at.
 - ²⁰ J. Rodriguez-Carvajal, *Physica B* **192**, 55 (1993).
 - ²¹ Quantum Design, Inc., 10307 Pacific Center Court, San Diego, CA 92121, USA,.
 - ²² J. Stremper, S. Francoual, D. Reuther, D. K. Shukla, A. Skaugen, H. Schulte-Schrepping, T. Kracht, and H. Franz, *J. Synchr. Rad.* **20**, 541 (2013).
 - ²³ C. Detlefs, M. Sanchez del Rio, and C. Mazzoli, *Eur. Phys. J. Special Topics* **208**, 359 (2012).
 - ²⁴ W. R. Busing and H. A. Levy, *Acta Crystallogr.* **22**, 457 (1967).
 - ²⁵ C. Mazzoli, S. B. Wilkins, S. Di Matteo, B. Detlefs, C. Detlefs, V. Scagnoli, L. Paolasini, and P. Ghigna, *Phys. Rev. B* **76**, 195118 (2007).
 - ²⁶ R. D. Johnson, S. R. Bland, C. Mazzoli, T. A. W. Beale, C.-H. Du, C. Detlefs, S. B. Wilkins, and P. D. Hatton, *Phys. Rev. B* **78**, 104407 (2008).
 - ²⁷ P. Hatton, R. Johnson, S. Bland, C. Mazzoli, T. Beale, C.-H. Du, and S. Wilkins, *J. Magn. Magn. Mater.* **321**, 810 (2009).
 - ²⁸ D. K. Shukla, S. Francoual, A. Skaugen, M. v. Zimmermann, H. C. Walker, L. N. Bezmaternykh, I. A. Gudim, V. L. Temerov, and J. Stremper, *Phys. Rev. B* **86**, 224421 (2012).
 - ²⁹ S. Francoual, J. Stremper, J. Warren, Y. Liu, A. Skaugen, S. Poli, J. Blume, F. Wolff-Fabris, P. C. Canfield, and T. Lograsso, *Journal of Synchrotron Radiation* **22**, 1207 (2015).
 - ³⁰ M. Blume and D. Gibbs, *Phys. Rev. B* **37**, 1779 (1988).
 - ³¹ J. P. Hill and D. F. McMorrow, *Acta Crystallogr. Sec. A* **52**, 236 (1996).
 - ³² S. Francoual, J. Stremper, D. Reuther, D. K. Shukla, and A. Skaugen, *J. Phys. Conference Series* **425**, 132010 (2013).
 - ³³ P. Giannozzi et. al., *Journal of physics. Condensed matter : an Institute of Physics journal* **21**, 395502 (2009), arXiv:0906.2569.
 - ³⁴ H. J. Monkhorst and J. D. Pack, *Phys. Rev. B* **13**, 5188 (1976).
 - ³⁵ A. C. Payne, A. E. Sprauve, M. M. Olmstead, S. M. Kau-

- zlarich, J. Y. Chan, B. Reisner, and J. Lynn, *J. Solid State Chem.* **163**, 498 (2002).
- ³⁶ P. Schobinger-Papamantellos and F. Hulliger, *J. Less Comm. Met.* **146**, 327 (1989).
- ³⁷ L. Sun, J. Guo, G. Chen, X. Chen, X. Dong, W. Lu, C. Zhang, Z. Jiang, Y. Zou, S. Zhang, Y. Huang, Q. Wu, X. Dai, Y. Li, J. Liu, and Z. Zhao, *Phys. Rev. B* **82**, 134509 (2010).
- ³⁸ J. C. Le Guillou and J. Zinn-Justin, *Phys. Rev. Lett.* **39**, 95 (LeGuillou1977).
- ³⁹ N. Nagaosa, J. Sinova, S. Onoda, A. H. MacDonald, and N. P. Ong, *Rev. Mod. Phys.* **82**, 1539 (2010).
- ⁴⁰ W. Setyawan and S. Curtarolo, *Computational Materials Science* **49**, 299 (2010).
- ⁴¹ M. Schlipf, M. Betzinger, M. Ležaić, C. Friedrich, and S. Blügel, *Phys. Rev. B* **88**, 094433 (2013).
- ⁴² J. M. An, S. V. Barabash, V. Ozolins, M. van Schilfgaarde, and K. D. Belashchenko, *Phys. Rev. B* **83**, 064105 (2011).
- ⁴³ G. Kotliar and D. Vollhardt, *Phys. Tod.* , 53 (2004).
- ⁴⁴ P. Larson and W. R. L. Lambrecht, *Journal of Physics: Condensed Matter* **18**, 11333 (2006).
- ⁴⁵ J. Kuneš, W. Ku, and W. E. Pickett, *Journal of the Physical Society of Japan* **74**, 1408 (2005), arXiv:0406229 [cond-mat].
- ⁴⁶ N. J. C. Ingle and I. S. Elfimov, *Phys. Rev. B* **77**, 121202 (2008).
- ⁴⁷ H. Zhang, L. Fang, M. Tang, Z. Y. Man, H. H. Chen, X. X. Yang, and M. Baitinger, *The journal of Chemical Physics* **194701** (2010), 10.1063/1.3501370.
- ⁴⁸ N. B. M. Schröter and *et al.*, unpublished (2016).
- ⁴⁹ Q. Wang, Y. Shen, B. Pan, X. Zhang, K. Ikeuchi, K. Iida, A. D. Christianson, H. C. Walker, D. T. Adroja, M. Abdel-Hafez, X. Chen, D. A. Chareev, A. N. Vasiliev, and J. Zhao, *Nat. Commun.* **7**, 12182 (2016).
- ⁵⁰ Z. K. Liu, B. Zhou, Y. Zhang, Z. J. Wang, H. M. Weng, D. Prabhakaran, S.-K. Mo, Z. X. Shen, Z. Fang, X. Dai, Z. Hussain, and Y. L. Chen, *Science* **343**, 864 (2014).
- ⁵¹ G. Hua, S. Nie, Z. Song, R. Yu, G. Xu, and K. Yao, *ArXiv e-prints* (2018), arXiv:1801.02806 [cond-mat.mtrl-sci].