



CHORUS

This is the accepted manuscript made available via CHORUS. The article has been published as:

Highly responsive ground state of PbTaSe_2 : Structural phase transition and evolution of superconductivity under pressure

Udhara S. Kaluarachchi, Yuhang Deng, Matthew F. Besser, Kewei Sun, Lin Zhou, Manh Cuong Nguyen, Zhujun Yuan, Chenglong Zhang, James S. Schilling, Matthew J. Kramer, Shuang Jia, Cai-Zhuang Wang, Kai-Ming Ho, Paul C. Canfield, and Sergey L. Bud'ko

Phys. Rev. B **95**, 224508 — Published 9 June 2017

DOI: [10.1103/PhysRevB.95.224508](https://doi.org/10.1103/PhysRevB.95.224508)

Highly responsive ground state of PbTaSe₂: structural phase transition and evolution of superconductivity under pressure

Udhara S. Kaluarachchi^{1,2}, Yuhang Deng³, Matthew F. Besser¹, Kewei Sun¹, Lin Zhou¹, Manh Cuong Nguyen¹, Zhujun Yuan⁴, Chenglong Zhang⁴, James S. Schilling³, Matthew J. Kramer¹, Shuang Jia⁴, Cai-Zhuang Wang¹, Kai-Ming Ho^{1,2}, Paul C. Canfield^{1,2}, and Sergey L. Bud'ko^{1,2}

¹*Ames Laboratory, US DOE, Iowa State University, Ames, Iowa 50011, USA*

²*Department of Physics and Astronomy,
Iowa State University, Ames, Iowa 50011, USA*

³*Department of Physics, Washington University,
St. Louis, Missouri 63130, USA and*

⁴*International Center for Quantum Materials,
School of Physics, Peking University, Beijing 100871, China*

(Dated: May 23, 2017)

Abstract

Transport and magnetic studies of PbTaSe_2 under pressure suggest the existence of two superconducting phases with the low temperature phase boundary at ~ 0.25 GPa that is defined by a very sharp, first order, phase transition. The first order phase transition line can be followed via pressure dependent resistivity measurements, and is found to be near 0.12 GPa near room temperature. Transmission electron microscopy and x-ray diffraction at elevated temperatures confirm that this first order phase transition is structural and occurs at ambient pressure near ~ 425 K. The new, high temperature / high pressure phase has a similar crystal structure and slightly lower unit cell volume relative to the ambient pressure, room temperature structure. Based on first-principles calculations this structure is suggested to be obtained by shifting the Pb atoms from the $1a$ to $1e$ Wyckoff position without changing the positions of Ta and Se atoms. PbTaSe_2 has an exceptionally pressure sensitive, structural phase transition with $\Delta T_s / \Delta P \approx -1400$ K/GPa near room temperature, and ≈ -1700 K/GPa near 4 K. This first order transition causes an ~ 1 K ($\sim 25\%$) step - like decrease in T_c as pressure is increased through 0.25 GPa.

PACS numbers: 74.70.Xa, 74.62.Fj, 61.50.Ks

I. INTRODUCTION

Although PbTaSe_2 was discovered several decades ago,^{1,2} its electronic structure and physical properties have only been studied in detail over the past few years.³⁻⁸ Structurally, PbTaSe_2 can be thought of as alternating stacking of hexagonal TaSe_2 and Pb layers with the $P\bar{6}m2$ space group. The crystal structure of PbTaSe_2 is non-centrosymmetric.¹ Initially, only the values of resistivity and Hall coefficient at 300 K of a pressed powder pellet of PbTaSe_2 and resistive onset of superconductivity at $T_c = 6.5$ K were reported.²

Recently PbTaSe_2 was identified as a topological, nodal semimetal with strong spin-orbit coupling.³ Its superconducting transition temperature in polycrystalline samples^{4,5} and in single crystals,⁶⁻⁸ based on thermodynamic and transport measurements, was established to be ~ 3.8 K. Thermal conductivity and London penetration depth measurements^{6,7} suggested a nodeless superconducting gap structure for this material. Low temperature magnetoresistance was found to be relatively high, anisotropic, and sublinear in magnetic field; the anisotropy of the upper critical field, H_{c2} , from the resistivity measurements was reported to be temperature dependent, with the values of $\gamma = H_{c2}^{ab}/H_{c2}^c = 2 - 4$.⁸

The complex, non-trivial band structure of PbTaSe_2 ^{3,4,8} suggests possible sensitivity of its physical properties to applied pressure. Indeed, a non-monotonic, V-shaped, pressure dependence of T_c was observed in a polycrystalline sample of PbTaSe_2 that had a relatively broad resistive superconducting transition.⁵ This behavior of $T_c(P)$ was suggested to result from a Lifshitz transition under pressure.

Non-monotonic behavior of T_c as a function of pressure has been observed in a number of materials, including elements.⁹⁻¹¹ A Lifshitz transition (a change of the Fermi surface topology)¹² has been invoked to explain such evolution of T_c with pressure.¹³ Recently, for complex (e.g. multi-band, non-isotropic and/or not idealized single, s -wave gap, etc.) superconductors, other possible causes for non-monotonic behavior of T_c under pressure were discussed and studied, e.g. crossing long range magnetic order phase lines in $T - P$ phase diagrams¹⁴⁻¹⁹ or pressure-induced changes in superconducting pairing symmetry or gap structure.²⁰⁻²³

To clarify the intrinsic $T_c(P)$ behavior of PbTaSe_2 under pressure and to better address the physics associated with this behavior, in this work we perform measurements of in-plane resistivity of high quality PbTaSe_2 single crystals under pressures up to ~ 1.5 GPa in zero

and applied magnetic field. In addition to $T_c(P)$, and pressure dependence of the normal state resistivity, these measurements allow us to follow the evolution of the upper critical field, $H_{c2}^c(T)$ near the $T_c(H = 0)$ and of the low temperature, normal state magnetoresistance. Note that the upper critical field measurements under pressure were instrumental in e.g. studies of KFe_2As_2 and FeSe .^{19,22,23}

Additionally, motivated by a clear signature of a structural phase transition appearing in the low temperature results discussed below, ambient pressure x-ray diffraction and transmission electron microscopy measurements at elevated temperatures were performed. Experimental studies were complimented by the first-principles calculations of the stability of different crystallographic phases under pressure.

II. EXPERIMENTAL AND COMPUTATIONAL METHODS

A. Experimental details

PbTaSe_2 single crystals were grown by chemical vapor transport, using PbCl_2 as a transport agent. More details about the synthesis are presented in Ref. 8. The quality of the samples is attested to by the samples' rather high residual resistivity ratios, $RRR = \rho_{300\text{K}}/\rho_{4\text{K}} \sim 115 - 120$ and sharp superconducting transitions in zero field. The electrical contacts for standard 4-probe ac resistivity measurements were made using Pt wires and combination of Du Pont 4929N silver paste and Epo-Tek H20E silver epoxy. The current was flowing in the ab plane and magnetic field was applied along the c -axis.

The resistivity measurements at ambient and high pressure were performed in a Quantum Design Physical Property Measurement System (PPMS-9). For resistivity measurements under pressure, a Be-Cu/Ni-Cr-Al hybrid piston cylinder pressure cell, similar to that used in Ref. 24, was used. A 40 : 60 mixture of light mineral oil and n-pentane was used as a pressure medium. This medium solidifies at room temperature at $P \sim 3.5$ GPa^{24,25}, well above the pressure range used in this work. The pressure at room temperature was evaluated using manganin resistive gauge, whereas at low temperatures the superconducting transition of pure Pb²⁶ was used to determine pressure. Additionally, low-field dc magnetization under pressure down to 1.8 K was measured in a Quantum Design Magnetic Property Measurement System (MPMS-5) SQUID magnetometer using a commercial, HMD, Be-Cu piston-cylinder

pressure cell²⁷. In these measurements Daphne oil 7373 was used as a pressure medium (solidifies at ~ 2.2 GPa at room temperature²⁸) and superconducting Pb was used as a low-temperature pressure gauge²⁶. For magnetization measurements a stack of single crystals was oriented with $H\parallel c$. In both, resistivity and magnetization measurements in the piston-cylinder cells, data were taken on increase and on decrease of pressure. No measurable plastic deformation / residual stress effects were observed.

An additional set of resistivity measurements was performed under He - gas pressure. Four-point ac electrical resistivity measurements were carried out simultaneously on two PbTaSe₂ crystals with approximate dimensions $0.5\times 0.1\times 0.05$ mm³ to hydrostatic pressures as high as 0.37 GPa in a He-gas high-pressure system. An excitation current of 1 mA (rms) at 17 Hz was applied using a Keithley 6221 constant ac/dc current source and the small voltage detected by a Stanford Research SR830 digital lock-in amplifier. Experiments were carried out both at constant temperature with varying pressures or at constant pressure with varying temperatures. A Janis SuperVarioTemp cryostat was used to provide thermal environment.

To generate hydrostatic pressure, the samples were placed in the 7 mm diameter bore of a Be-Cu high-pressure cell (Unipress, Warsaw) and connected to a three-stage Harwood compressor system. He gas from the compressor was fed into the pressure cell via a 3 mm OD / 0.3 mm ID Be-Cu capillary tube. A calibrated digital manganin gauge, at ambient temperature (Harwood model DJ-320/42), determined the pressure. A sizable “dead volume” at ambient temperature reduces the decrease of He-gas pressure on cooling from ambient to low temperatures.

High temperature x-ray diffraction (XRD) was performed using a Panalytical X’Pert Pro XRD system with an Anton Paar HTK-1200N furnace under flowing helium after evacuating and backfilling the system with He. Larger single crystals were ground to a few tens of μm but retained their micaceous morphology hence the XRD only exhibited (00l) reflections. Copper and cobalt radiation were used. Heating rates were either 3 K/min or 5 K/min.

Since the XRD was not able to resolve changes of the *in-plane* lattice with heating, additional studies, using transmission electron microscopy (TEM) at different temperatures using a FEI Tecnai G2 F200 instrument operating at 200 kV, were performed. For these studies a single crystal was thinned via Ar ion milling. The thin region was co-planar with the basal planes, providing an orthogonal view of the lattice expansion on heating compared

to the XRD results, i.e., the (hk0) reflections. The in situ heating/cooling was performed on a Gatan heating stage up to ~ 500 K. Continuous recording of the selected area diffraction was obtained on cooling.

B. First-principles calculations method

The first-principles density functional theory (DFT)²⁹ calculations were performed using the Vienna Ab-Initio Simulation Package (VASP)³⁰ with projector-augmented wave (PAW) pseudopotential method^{31,32} and plane wave basis. The generalized-gradient approximation parameterized for solids (PBEsol)³³ was used for the exchange-correlation energy functional. Spin-orbit coupling was included in the calculations. The energy cutoff was 320 eV and the Monkhorst-Pack's scheme³⁴ was used for Brillouin zone sampling with a k -point mesh of $12 \times 12 \times 4$ for the ground state $P\bar{6}m2$ structure and equivalent k -point meshes for other structures. A denser k -point mesh of $18 \times 18 \times 6$, together with a smearing of 0.15 eV, were used for density of states calculations. All crystal structures were fully relaxed until the forces on each atom were smaller than 0.01 eV/Å and external pressure was smaller than 0.1 GPa.

III. RESULTS

Ambient pressure resistivity data (Fig. 1a) are grossly consistent with those reported in Refs. 6–8. Although there is a region of $\rho = \rho_0 + AT^2$ behavior in resistivity, it does not persist to the temperatures close to the superconducting transition, where power - law behavior with temperature to a higher power (close to 4) was observed (Fig. 1b). The upper critical field, $H_{c2}(T)$, was determined from electrical transport and magnetization measurements (see Appendix A for details). Here, as well as in the literature,⁸ there is an apparent discrepancy between the results of thermodynamic (magnetization and specific heat) and transport measurements, although the $H = 0$, T_c values agree.

Turning to superconducting properties under pressure, the evolution of the superconducting transition under pressure, as measured by resistivity and low field magnetization, is presented in Fig. 2. In the resistivity measurements the transitions at all pressures, other than 0.24 GPa, are sharp. From both measurements it appears that the $T_c(P)$ has a step-

like behavior. Indeed, as it is seen in Fig. 3, both measurements result in consistent data, and a clear, sharp step in $T_c(P)$ is observed at about 0.25 GPa. The broad, two-step-like resistive transition at 0.24 GPa corresponds to this apparent phase boundary. Normal state resistivity at 5 K, just like T_c , also has a step-like behavior (Fig. 3). The initial slope of transport $H_{c2}(T)$ (see Appendix B) has a step-like change at $P \approx 0.25$ GPa as well.

Finally, the field dependent magnetoresistance data (Fig. 4) show a clear discontinuity consistent with a transition near 0.25 GPa at 5 K, clearly falling on two different manifolds, for $P \leq 0.13$ GPa and $P \geq 0.24$ GPa, that have different functional dependencies of $\Delta\rho/\rho_0$.

A careful look at zero field, temperature-dependent resistivity data taken in the piston-cylinder cell at small pressures, $0.05 \leq P \leq 0.39$ GPa, (Fig. 5) reveals a clear, sharp transition that is hysteretic in temperature. Qualitatively these data point to an additional phase line, probably associated with a structural transition, that has a very steep pressure dependence. However, quantitative analysis of these data is hindered by an experimental issue associated with a use of piston-cylinder pressure cells over an extended temperature range. Due to differential thermal contraction of the materials of the cell and the medium, the pressure inside the cell decreases on cooling³⁵. This pressure drop depends on multiple factors, including the cell materials and design, medium and the pressure range. At low pressures, even when using manganin as a room temperature pressure gauge and Pb as a low temperature pressure gauge, the evaluation of pressure at intermediate temperatures has substantial error bars.

To address the pressure dependence of the apparent structural transition in a quantitative manner, a set of measurements in a He gas system was performed (Fig. 6). The hysteretic nature of the transition is seen both in temperature sweeps and pressure sweeps. These signatures are sharp and well defined. From the pressure sweeps (Fig. 6(b)) it is seen that (a) at lower temperatures the transition shifts to higher pressures; (b) as has been seen in figure 5, the size of the resistance jump becomes smaller at lower temperatures and it appears not to be detected anymore in the pressure sweep at ~ 50 K. Fig. 7 shows that both absolute and relative resistance jumps decrease at lower temperatures.

By returning to the piston - cylinder cell data we can track this feature to lower temperatures and (as shown in Fig. 8) see that it re-emerges, with a different sign, for $T = 5, 10$ and 25 K. This making it manifestly clear that this feature is coincident with the sudden jump in $T_c(P)$ shown in Fig. 3.

The pressure dependence of the apparent structural transition measured in gas pressure system is presented in Fig. 9. The second order polynomial fits to the $P(T)$ data extrapolate to 0.25 GPa for the decreasing temperature manifold to intercept the $T = 0$ K axis. In a similar manner, both manifolds extrapolate to ~ 425 K at ambient pressure. This is a rather rough extrapolation, additional, preferably structural, data at high temperatures are required to verify the nature of the transition.

In situ XRD was performed at different, elevated temperatures. As mentioned above, the PbTaSe_2 powder retained the micaceous morphology, so only (00l) reflections could be detected and followed as a function of temperature. The experimental results are shown in Fig. 10. The (00l) reflections show a clear, step-like, contraction of the c -axis lattice on heating which is reversible upon cooling. The temperature of this transition is $\sim 425 - 430$ K.

To resolve changes of the in-plane lattice with heating, TEM measurements were performed (Fig. 11). The thin region studied with TEM was co-planar with the basal planes, providing an orthogonal view of the lattice expansion on heating compared to the XRD results, i.e., the (hk0) reflections. Continuous recording of the selected area diffraction was obtained on cooling. The sample was slowly cooled over the temperature range of ~ 430 K to ~ 400 K at ~ 13 K/min. An abrupt contraction of the basal plane lattice of $\sim 0.03\text{\AA}$ occurred ~ 425 K. No other changes in the diffraction pattern were observed, indicating that like in the XRD there is a discrete change in the cell parameters occurring at ~ 425 to 430 K but no obvious change in the space group (Fig. 11, lower panels). TEM results suggest that the basal plane undergoes a normal expansion with heating and contraction on cooling in contrast to the XRD results which shows a large contraction in the c -axis at ~ 425 K.

Aberration corrected scanning transmission electron microscopy using a FEI Titan Themis 300 Cubed 300 STEM/TEM shows that the room temperature atomic decoration is fully consistent with the space group $\# 187$, $P\bar{6}m2$, (Fig. 12). The image suggest minimal chemical disorder. There is a rather large gap between the Pb layers relative to the Ta/Se inner layers which form an open network of edge sharing prisms. This large gap between these layers maybe responsible for the lattice contraction in the c -axis with heating.

Altogether on heating through the structural transition at $\sim 425 - 430$ K the a -axis increases by $\sim 0.8\%$, whereas the c -axis decreases by $\sim 2\%$, leading to a decrease of the unit

cell volume by $\sim 0.4\%$.

IV. DISCUSSION AND SUMMARY

Based on the data discussed above, the pressure - temperature the phase diagram for PbTaSe₂ (Fig. 13) appears to have two superconducting regions with the boundary between them defined by a structural phase transition that has extremely steep pressure dependence. This is in stark contrast to the broad, V-like structure of $T_c(P)$ and speculated Lifshitz transition presented in Ref. 5. Since the normal state resistivity, magnetoresistance and the initial slopes of $H_{c2}(P)$ are different in these two phases, clearly, the electronic structure is affected. A Bloch - Grüneisen fit of resistivity³⁶ (over the 50 K - 300 K temperature range) (fig. 14). suggests that as a result of the structural phase transition the Debye temperature increases, so that the lattice becomes stiffer. This is largely consistent with an overall decrease of the unit cell volume at ambient pressure on heating through the transition. Despite this, T_c is lower in the new structural phase, suggesting that either the change in the electronic subsystem is the dominant contribution to the T_c decrease, or that the in-plane phonons are more important for superconductivity than the out-of-plane phonons. The latter hypothesis is in agreement with the observed large gaps between the layers (Fig. 12).

Since available experimental techniques do not allow for an unambiguous identification of the high pressure (high temperature) phase, we have performed first-principles calculations that address relative stability of several related hexagonal phases under pressure.

In addition to the known $P\bar{6}m2$ structure of PbTaSe₂, we consider 3 other low-energy structures, within 50.0 meV/atom with respect to that of the $P\bar{6}m2$ structure, coming from our crystal structure optimization scheme with one and two formula units and hexagonal symmetry constraints (Fig. 15). These structures can also be obtained through modification of the $P\bar{6}m2$ structure. The $Pb-1c$ structure can be obtained from the $P\bar{6}m2$ structure by moving the Pb atom from the $1a$ -Wyckoff position to the $1c$ -Wyckoff position. Similarly the $Pb-1e$ structure can be obtained by shifting the Pb from the $1a$ -Wyckoff position to the $1e$ -Wyckoff position. By doubling unit cell of the $P\bar{6}m2$ structure along the c -axis lattice vector and then moving the upper half of unit cell by $1/3$ along the long diagonal of the basal plane ($1/3(\mathbf{b} - \mathbf{a})$), the $hex2$ structure can be obtained. The $Pb-1c$ and $Pb-1e$ structures

are in $P\bar{6}m2$ space group symmetry whereas the $hex2$ structure is in $P6_3mc$ space group symmetry. The lattice parameters and Wyckoff positions of these structures are given in Table I. The lateral lattice constants of these 3 structures are similar to that of the $P\bar{6}m2$ structure, but their lattice constants along the c direction ($c/2$ for the $hex2$ structure) are smaller than that of the $P\bar{6}m2$ structure by 0.534 Å, 0.487 Å, and 0.246 Å respectively, where the $Pb-1c$ structure has the shortest lattice parameter c .

In order to compare with experimental XRD results, we simulated the XRD (0 0 l)-peaks of all four structures considered. It is interesting to note that although the $hex2$ structure has a doubled unit cell along the c -direction in comparison with other structures, it shows only (0 0 l)-peaks with even- l . As shown in Fig. 16, the XRD (0 0 l)-peaks versus d -spacing patterns from all four structures are very similar. In figure 16 the peak indexes of the $hex2$ structure are (0 0 2 l) of the labeled ones and the diffraction intensities of all structures are normalized by the intensity of their (0 0 2)-peak.

Figure 17 shows the relative formation enthalpies of different PbTaSe₂ structures as a function of pressure with respect to that of the $P\bar{6}m2$ structure. At zero and low pressure, the stable structure is the $P\bar{6}m2$ structure. As the pressure is increased, the $Pb-1e$ structure becomes more stable with a structural transition from the $P\bar{6}m2$ to the $Pb-1e$ at 3 GPa. At ambient conditions, the formation energy of the $Pb-1e$ structure is 25.9 meV/atom higher than that of the $P\bar{6}m2$ ground state structure. This energy difference is about the room temperature thermal energy. We note that the $hex2$ structure is lower in energy than the $Pb-1e$ structure at ambient conditions. However, the $Pb-1e$ structure becomes more stable than the $hex2$ structure when the external pressure is greater than 2.7 GPa, which is just below the transition pressure from the $P\bar{6}m2$ structure to the $Pb-1e$ structure. Thus these calculations suggest that the experimentally observed high pressure - high temperature structure is the $Pb-1e$ structure. We would like to note that structural transition pressure from the DFT calculations is higher than that observed in experiment. This discrepancy is probably due to the systematic error in DFT calculation of pressure. For example, in the literature the predicted structural transition pressure of Si from cubic diamond (Si-I) to - Sn (Si-II) phase can be several GPa off the experimentally observed value, depending on exchange-correlation functional used.^{37,38} But the sequence of phase transition, i.e. Si-I to Si-II to Si-V to Si-VI to Si-VII, from DFT calculation is consistent with experiment.³⁷

The anisotropy in thermal expansion (figures 10,11) is due to the temperature induced

structural transition from $P\bar{6}m2$ to $Pb-1e$ structure. The change of Pb position from the top of prism edge to the center of prism base during the phase transition substantially reduces the lattice parameter along the c -axis by about 4%. On the other hand, the basal expansion is mainly defined by the TaSe₂ “layer” which is the same for both structures (before and after the transition) so that there is basically no anomaly in the thermal expansion of the basal plane as observed in experiment.

Our DFT calculations show that the electronic density of states at Fermi level of $Pb-1e$ structure is about 25% lower than that of the $P\bar{6}m2$ structure. They are 1.46 and 1.95 states/eV/f.u. for $Pb-1e$ and $P\bar{6}m2$ structures, respectively. This result suggests that the change in electronic structure due to the structural phase transition indeed is the dominant contribution to the reduction of T_c .

To summarize, PbTaSe₂ exhibits a structural, sharp, first order, phase transition at a very moderate pressure of ~ 0.25 GPa at low temperatures. PbTaSe₂ has a $\Delta T_s/\Delta P$ as high as -1700 K/GPa making it one of the more pressure sensitive transitions found in inorganic compounds. The structural phase transition line extends to ~ 425 K at ambient pressure as evidenced by transmission electron microscopy and x-ray diffraction at elevated temperatures. Upon transition to the new phase on increase of temperature at ambient pressure the c -axis decreases and the a -axis increases, resulting in a slight, $\sim 0.4\%$ decrease of the unit cell volume. The new, high temperature / high pressure phase has similar crystal structure. As suggested by the first-principles calculations, in this structure Pb shifts from $1a$ to $1e$ Wyckoff position with Ta and Se positions remaining the same. The superconductivity appears to be robust, it persists through the structural phase transition into the other phase with slight, step-like decrease of T_c .

Appendix A: Ambient pressure upper critical field, $H_{c2}(T)$

Ambient pressure, low temperature resistivity data, $\rho(T)$, measured in constant fields and $\rho(H)$, measured at constant temperatures, are shown in Figs. 18a,b. Two criteria, onset and offset (see Fig. 18b) were used to evaluate the H_{c2} . Additionally, zero-field-cooled magnetization was measured in different applied fields (Fig. 18c) and $H_{c2}(T)$ was determined from these measurements as well. The summary of these results, the ambient

pressure $H_{c2}(T)$ for $H||c$ inferred from electrical transport and magnetization measurements are shown in Fig. 18d and are compared to the literature data⁸. The resistively determined $H_{c2}(T)$ is comparable with the literature data, with possible contributions to the difference from the sample shape and slight mis-orientation. Similarly, results from magnetization are very close to the published upper critical field determined from specific heat. However, both in the literature⁸ and in this work, even though the low field / zero field T_c values are quite similar, $H_{c2}(T)$ from electrical transport [$\rho(T, H)$] and thermodynamic [$M(T, H), C_p(T, H)$] measurements are noticeably different. The origin of this difference is not clear at this point.

Appendix B: Resistive upper critical field under pressure

The temperature-dependent upper critical field for $H||c$ was measured resistively as a function of pressure (Fig. 19). Whereas there is an apparent difference between thermodynamic and transport H_{c2} values (see above), as well as an upward curvature of $H_{c2}(T)$ and the limited range of the data for the higher pressures, we can still compare the change of the initial, close to $T_c(H = 0)$, slope of transport H_{c2} as a function of pressure (Fig. 20). In agreement with the $T_c(P)$ behavior, both bare, dH_{c2}/dT , and normalized, $(dH_{c2}/dT)/T_c$, initial slopes of the upper critical field have step-like change at $P \approx 0.25$ GPa.

Acknowledgments

We thank the Ms. Junying Shen for assistance in the He-gas measurements. Work at the Ames Laboratory was supported by the U.S. Department of Energy, Office of Science, Basic Energy Sciences, Materials Sciences and Engineering Division. The Ames Laboratory is operated for the U.S. Department of Energy by Iowa State University under contract No. DE-AC02-07CH11358, including a grant of computer time at the National Energy Research Scientific Computing Centre (NERSC) in Berkeley, CA. The work at Washington University was supported by the National Science Foundation (NSF) through Grants No. DMR-1104742 and 1505345.

¹ R. Eppinga and G. A. Wieggers, Physica B **99**, 121 (1980).

- ² R. Eppinga, G. A. Wieggers, and C. Haas, *Physica B* **105**, 174 (1981).
- ³ Guang Bian, Tay-Rong Chang, Raman Sankar, Su-Yang Xu, Hao Zheng, Titus Neupert, Ching-Kai Chiu, Shin-Ming Huang, Guoqing Chang, Ilya Belopolski, Daniel S. Sanchez, Madhab Neupane, Nasser Alidoust, Chang Liu, BaoKai Wang, Chi-Cheng Lee, Horng-Tay Jeng, Chenglong Zhang, Zhujun Yuan, Shuang Jia, Arun Bansil, Fangcheng Chou, Hsin Lin, and M. Zahid Hasan, *Nat. Commun.* **7**, 10556 (2016).
- ⁴ Mazhar N. Ali, Quinn D. Gibson, T. Klimczuk, and R. J. Cava, *Phys. Rev. B* **89**, 020505 (2014).
- ⁵ J. Wang, Xiaofeng Xu, N. Zhou, L. Li, X. Cao, J. Yang, Y. Li, C. Cao, Jianhui Dai, J. L. Zhang, Z. X. Shi, B. Chen, and Zhihua Yang, *J. Supercond. Novel Magn.* **28**, 3173 (2015).
- ⁶ M. X. Wang, Y. Xu, L. P. He, J. Zhang, X. C. Hong, P. L. Cai, Z. B. Wang, J. K. Dong, and S. Y. Li, *Phys. Rev. B* **93**, 020503 (2016).
- ⁷ G. M. Pang, M. Smidman, L. X. Zhao, Y. F. Wang, Z. F. Weng, L. Q. Che, Y. Chen, X. Lu, G. F. Chen, and H. Q. Yuan, *Phys. Rev. B* **93**, 060506 (2016).
- ⁸ Cheng-Long Zhang, Zhujun Yuan, Guang Bian, Su-Yang Xu, Xiao Zhang, M. Zahid Hasan, and Shuang Jia, *Phys. Rev. B* **93**, 054520 (2016).
- ⁹ J. Hatton, *Phys. Rev.* **103**, 1167 (1956).
- ¹⁰ L. D. Jennings and C. A. Swenson, *Phys. Rev.* **112**, 31 (1958).
- ¹¹ C. W. Chu, T. F. Smith, and W. E. Gardner, *Phys. Rev. Lett.*, **20**, 198 (1968).
- ¹² I. M. Lifshitz, *Zh. Eksp. Teor. Fiz.* **38**, 1569 (1960) [*Soviet Phys. JETP* **11**, 1130 (1960)].
- ¹³ V. I. Makarov and V. G. Bar'yakhtar, *Zh. Eksp. Teor. Fiz.* **48**, 1717 (1965) [*Sov. Phys. JETP* **21**, 1151 (1965)].
- ¹⁴ E. Hassinger, G. Gredat, F. Valade, S. René de Cotret, A. Juneau-Fecteau, J.-Ph. Reid, H. Kim, M. A. Tanatar, R. Prozorov, B. Shen, H.-H. Wen, N. Doiron-Leyraud, and Louis Taillefer, *Phys. Rev. B* **86**, 140502 (2012).
- ¹⁵ Sergey L. Bud'ko, Duck Young Chung, Daniel Bugaris, Helmut Claus, Mercuri G. Kanatzidis, and Paul C. Canfield, *Phys. Rev. B* **89**, 014510 (2014).
- ¹⁶ Sergey L. Bud'ko, *Mod. Phys. Lett. B*, **29**, 1430019 (2015)
- ¹⁷ M. Bendele, A. Amato, K. Conder, M. Elender, H. Keller, H.-H. Klauss, H. Luetkens, E. Pomjakushina, A. Raselli, and R. Khasanov, *Phys. Rev. Lett.* **104**, 087003 (2010).
- ¹⁸ M. Bendele, A. Ichsanow, Yu. Pashkevich, L. Keller, Th. Strssle, A. Gusev, E. Pomjakushina, K. Conder, R. Khasanov, and H. Keller, *Phys. Rev. B* **85**, 064517 (2012).

- ¹⁹ Udhara S. Kaluarachchi, Valentin Taufour, Anna E. Böhmer, Makariy A. Tanatar, Sergey L. Bud'ko, Vladimir G. Kogan, Ruslan Prozorov, and Paul C. Canfield, *Phys. Rev. B* **93**, 064503 (2016).
- ²⁰ F. F. Tafti, A. Juneau-Fecteau, M-È. Delage, S. René de Cotret, J-Ph. Reid, A. F. Wang, X-G. Luo, X. H. Chen, N. Doiron-Leyraud, and Louis Taillefer, *Nat. Phys.* **9**, 349 (2013).
- ²¹ Taichi Terashima, Kunihiro Kihou, Kaori Sugii, Naoki Kikugawa, Takehiko Matsumoto, Shigeyuki Ishida, Chul-Ho Lee, Akira Iyo, Hiroshi Eisaki, and Shinya Uji, *Phys. Rev. B* **89**, 134520 (2014).
- ²² Valentin Taufour, Neda Foroozani, Makariy A. Tanatar, Jinhyuk Lim, Udhara Kaluarachchi, Stella K. Kim, Yong Liu, Thomas A. Lograsso, Vladimir G. Kogan, Ruslan Prozorov, Sergey L. Bud'ko, James S. Schilling, and Paul C. Canfield, *Phys. Rev. B* **89**, 220509 (2014).
- ²³ F. F. Tafti, A. Ouellet, A. Juneau-Fecteau, S. Faucher, M. Lapointe-Major, N. Doiron-Leyraud, A. F. Wang, X.-G. Luo, X. H. Chen, and Louis Taillefer, *Phys. Rev. B* **91**, 054511 (2015).
- ²⁴ S. L. Bud'ko, A. N. Voronovskii, A. G. Gapotchenko, and E. S. Itskevich, *Zh. Eksp. Teor. Fiz.* **86**, 778 (1984) [*Sov. Phys. JETP* **59**, 454 (1984)].
- ²⁵ M. S. Torikachvili, S. K. Kim, E. Colombier, S. L. Bud'ko, and P. C. Canfield, *Rev. Sci. Instr.* **86**, 123904 (2015).
- ²⁶ A. Eiling and J. S. Schilling, *J. Phys. F: Met. Phys.* **11**, 623 (1981).
- ²⁷ https://www.qdusa.com/sitedocs/productBrochures/High_Pressure_Cell_for_Magnetometry_Brochure.pdf
- ²⁸ Keiichi Yokogawa, Keizo Murata, Harukazu Yoshino, and Shoji Aoyama, *Jpn. J. Appl. Phys.* **46**, 3636 (2007).
- ²⁹ W. Kohn, and L. J. Sham, *Phys. Rev.* **140**, A1133 (1965).
- ³⁰ G. Kresse and J. Furthmüller, *Phys. Rev. B* **54**, 11169 (1996).
- ³¹ P. E. Blöchl, *Phys. Rev. B* **50**, 17953 (1994).
- ³² G. Kresse, and D. Joubert, *Phys. Rev. B* **59**, 1758 (1999).
- ³³ J. P. Perdew, A. Ruzsinszky, G. I. Csonka, O. A. Vydrov, G. E. Scuseria, L. A. Constantin, X. Zhou, and K. Burke, *Phys. Rev. Lett.* **100**, 136406 (2008).
- ³⁴ H. J. Monkhorst and J. D. Pack, *Phys. Rev. B* **13**, 5188 (1976).
- ³⁵ J. D. Thompson, *Rev. Sci. Instr.* **55**, 231 (1984).
- ³⁶ J. M. Ziman, *Principles of the Theory of Solids* (Cambridge University Press, London, 1972).

- ³⁷ A. Mujica, A. Rubio, A. Muñoz, and R. J. Needs, *Rev. Mod. Phys.* **75**, 863 (2003).
- ³⁸ R. G. Hennig, A. Wadehra, K. P. Driver, W. D. Parker, C. J. Umrigar, and J. W. Wilkins, *Phys. Rev. B* **82**, 14101 (2010).

TABLE I: Crystallographic data of PbTeSe₂ structures

Structure	a(Å)	c(Å)	Wyckoff positions				
			Pb	1a	0.0	0.0	0.0
<i>P6̄m2</i>	3.415	9.382	Ta	1d	1/3	2/3	1/2
			Se	2g	0.0	0.0	0.32283
			Pb	2b	1/3	2/3	0.49038
<i>hex2</i>	3.419	18.237	Ta	2b	1/3	2/3	0.24142
			Se	2b	1/3	2/3	0.83300
			Se	2b	1/3	2/3	0.65080
			Pb	1e	2/3	1/3	0.0
<i>Pb-1e</i>	3.404	8.895	Ta	1d	1/3	2/3	1/2
			Se	2g	0.0	0.0	0.31109
			Pb	1c	1/3	2/3	0.0
<i>Pb-1c</i>	3.426	8.848	Ta	1d	1/3	2/3	1/2
			Se	2g	0.0	0.0	0.31147

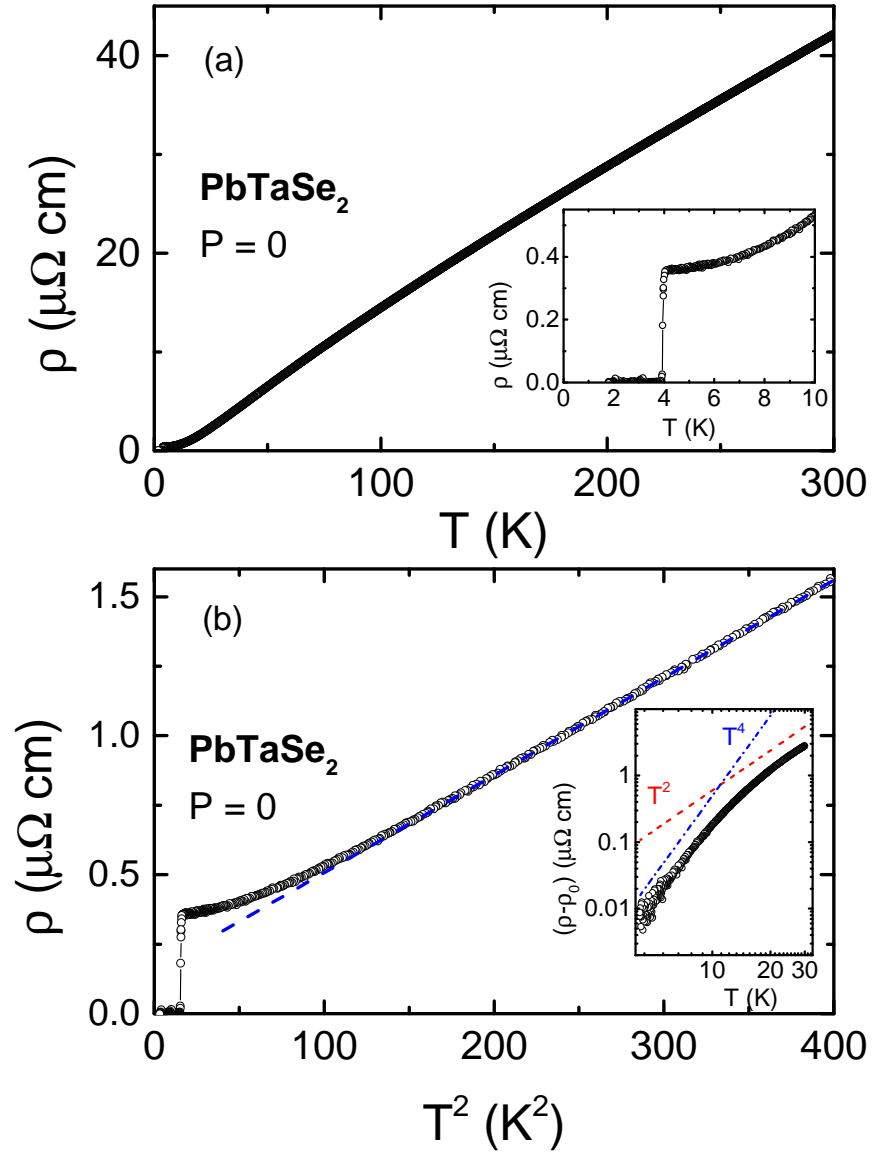


FIG. 1: (Color online) (a) Zero field, ambient pressure, in-plane resistivity of PbTaSe_2 . Inset: low temperature part of the data showing the superconducting transition. (b) Low temperature resistivity of PbTaSe_2 at ambient pressure plotted as ρ vs T^2 . The dashed line is a guide for the eye representing T^2 behavior. Inset: $\log - \log$ plot of the low temperature resistivity after subtraction of the residual resistivity ρ_0 . Lines show T^2 and T^4 behavior.

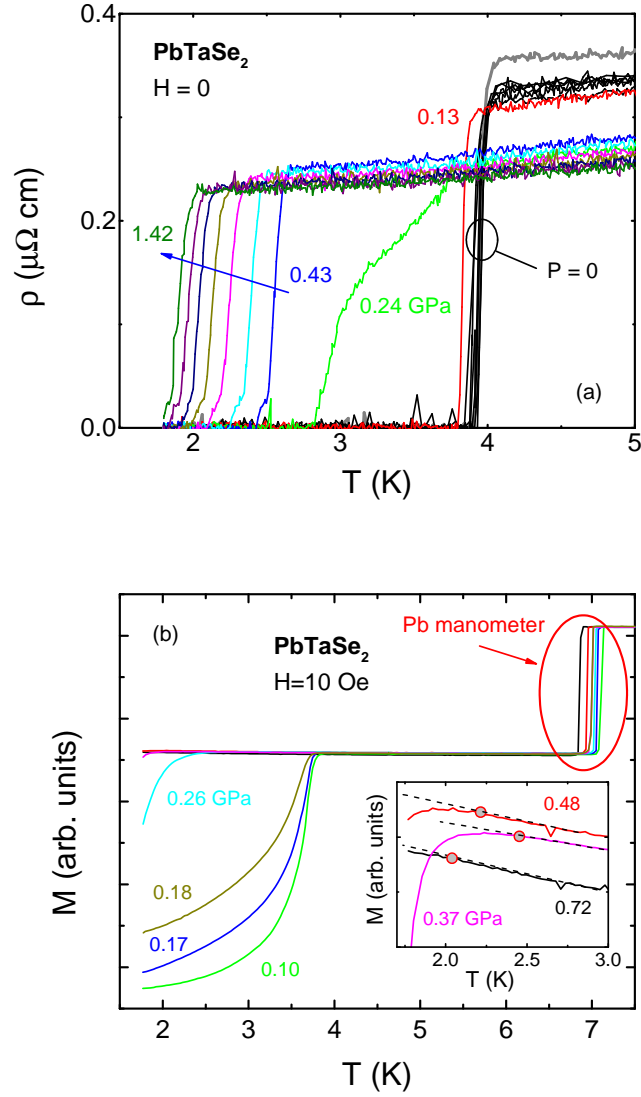


FIG. 2: (Color online) Low temperature resistivity (a) and magnetization (b) as a function of pressure. Numbers near the data are low temperature value of pressure in GPa. Several resistivity curves at $P = 0$ correspond to the pressure runs that have slightly different room temperature pressure values but result in the same $P = 0$ low temperature value as measured by Pb manometer. For magnetization measurements a deviation from linear, normal state magnetization (indicated by circle) was taken as a T_c criterion, see inset to the panel (b).

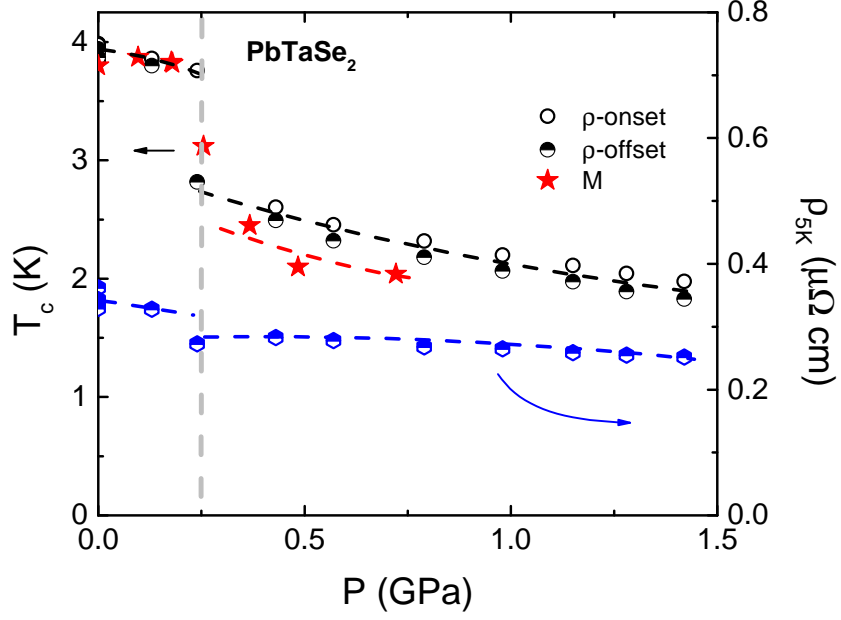


FIG. 3: (Color online) T_c as determined from resistivity and magnetization measurements (left Y-axis), and normal state resistivity at 5 K (right Y-axis) as a function of pressure. Dashed vertical line shows $P = 0.25$ GPa location. Dashed lines through the experimental points are guides for the eye.

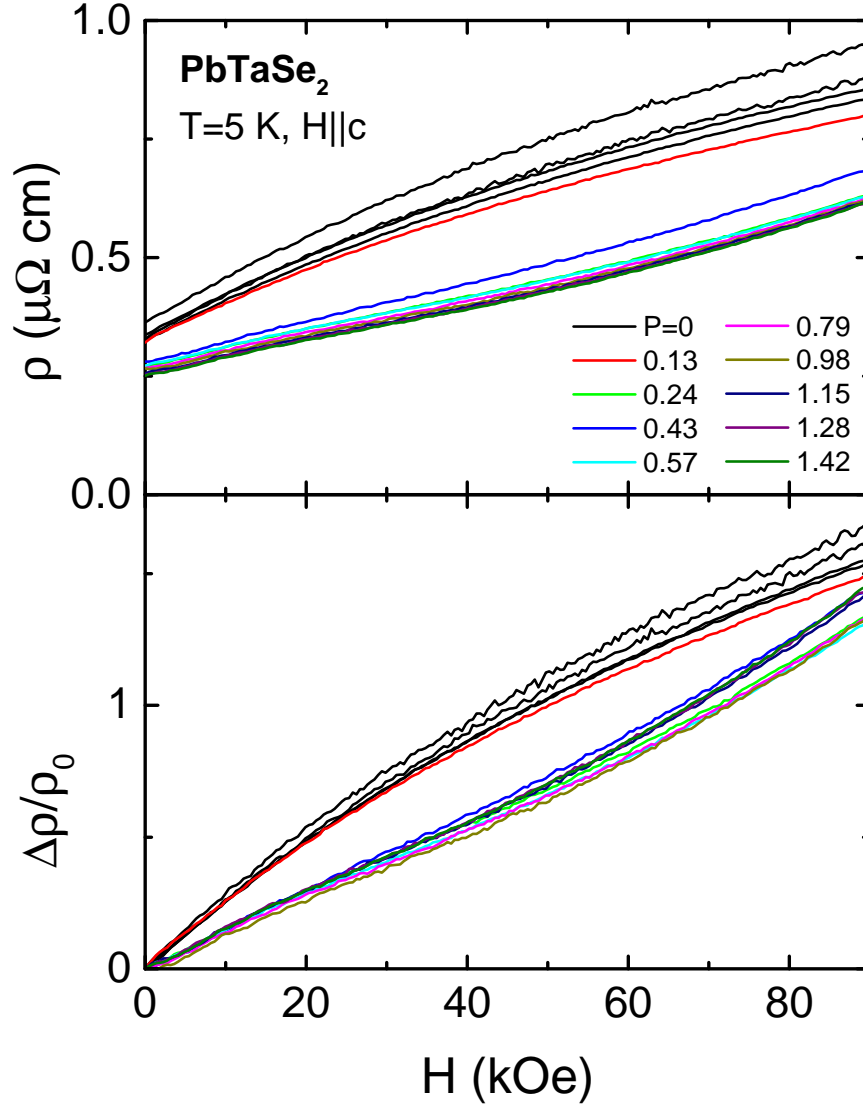


FIG. 4: (Color online) Low temperature, $T = 5$ K, field dependent magnetoresistance at different pressures (listed in the upper panel in units of GPa), plotted as $\rho(H)$ and $\Delta\rho/\rho_0(H)$. Note: for both panels the four $P = 0$ data sets, as well as the $P = 0.13$ GPa data set form an upper manifold, and the $P \geq 0.24$ GPa data sets form a lower manifold.

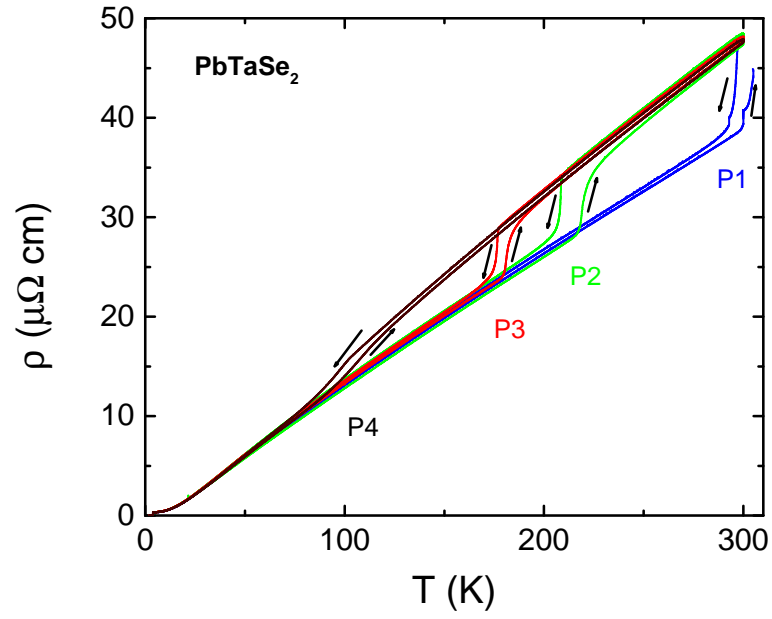


FIG. 5: (Color online) Temperature-dependent resistivity measured on warming and on cooling at four different, small pressures in the piston-cylinder cell, $0.05 \text{ GPa} < P_1 < P_2 < P_3 < P_4 < 0.39 \text{ GPa}$ (see text for more details).

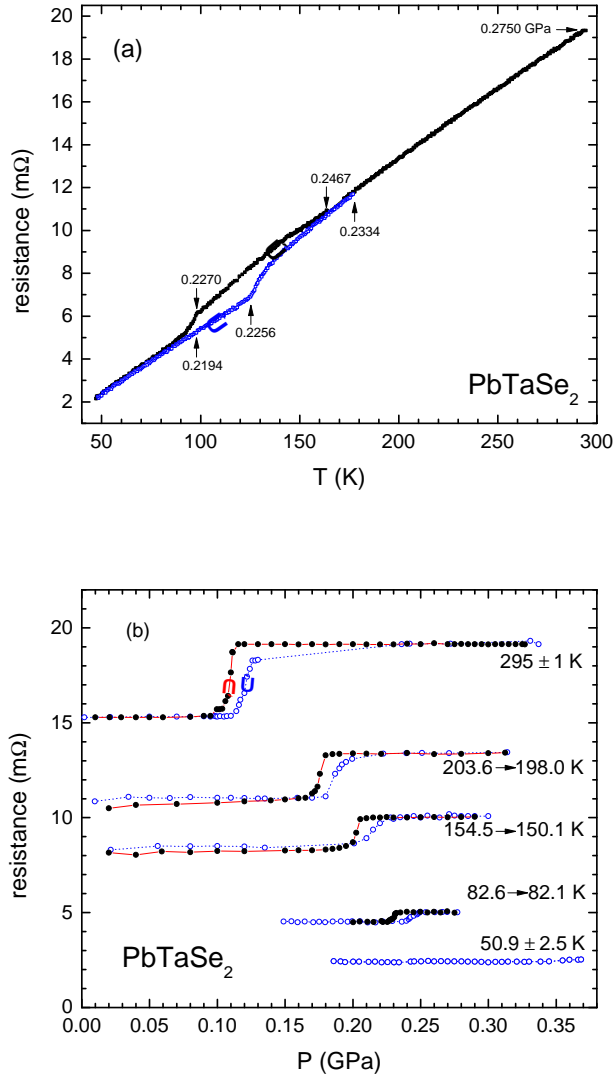


FIG. 6: (Color online) Examples (a) of temperature sweeps at almost constant, continuously monitored, gas pressure, and (b) of pressure sweeps close to constant temperature. Numbers in panel (a) indicate measured pressure in GPa, in panel (b) change of temperature during the run. Arrows on the curves indicate the direction of the temperature/pressure changes: open symbols: increase, filled symbols - decrease.

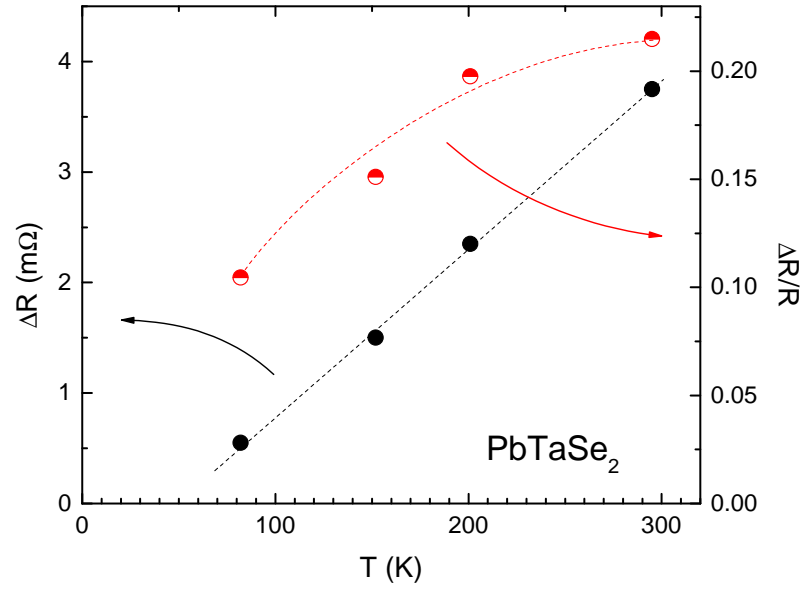


FIG. 7: (Color online) Temperature-dependent absolute and relative (to the average resistance below and above the transition) resistance jump at the apparent structural transition. Dashed lines are the guides for the eye.

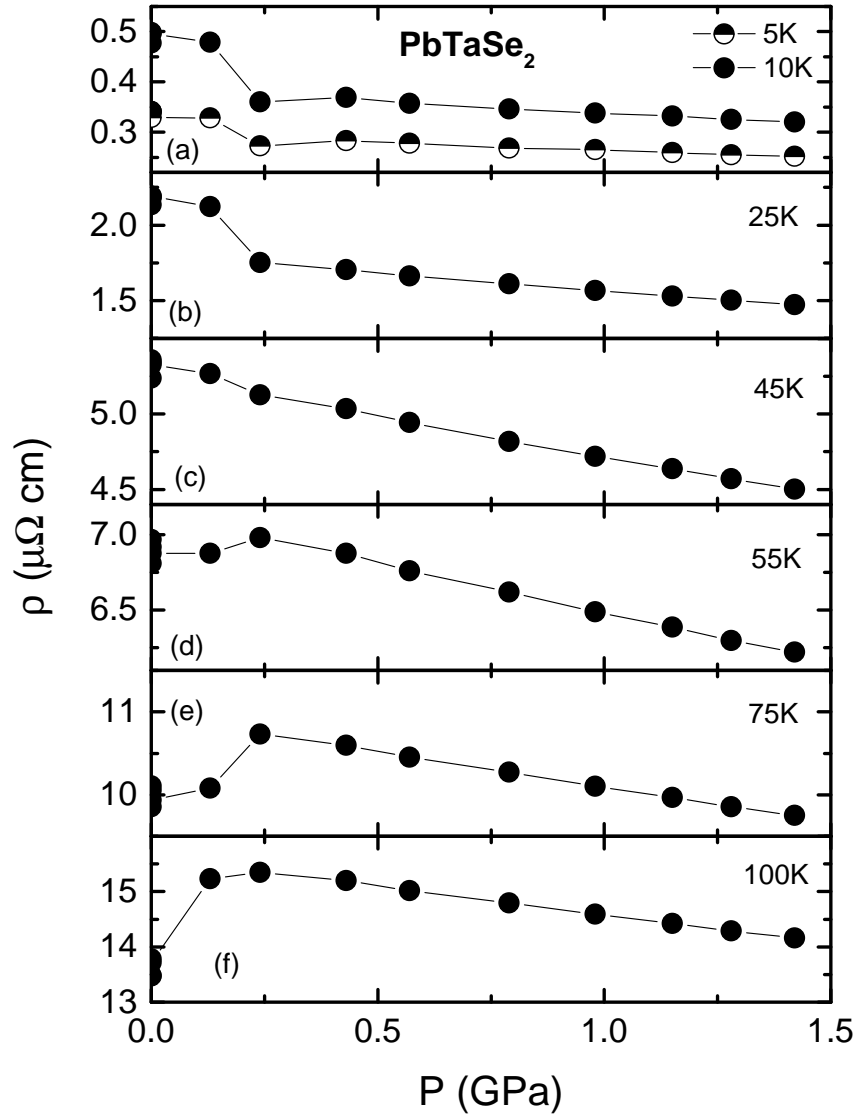


FIG. 8: Zero field, normal state resistivities of the PbTaSe₂ at selected temperatures plotted as a function of pressure. The plot is assembled based on measurements in a piston cylinder cell. Data for $T = 5$ K are the same as plotted in Fig. 3.

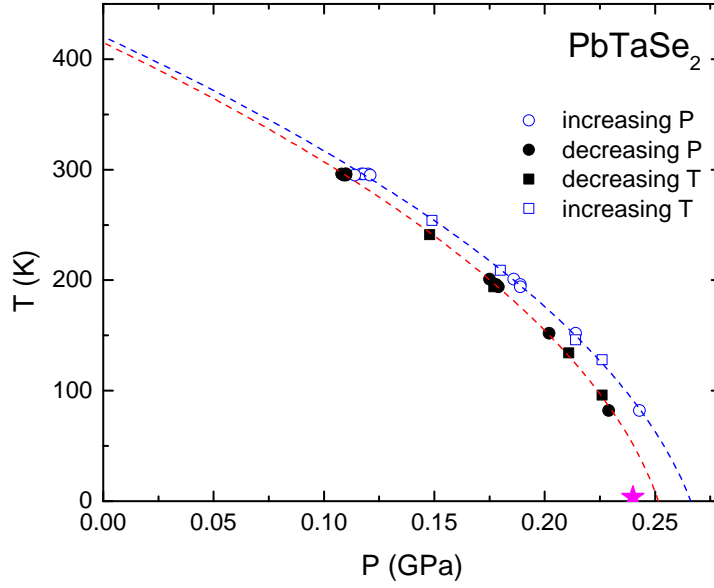


FIG. 9: (Color online) Pressure dependence of the apparent structural transition. Open symbols are points obtained on increase of pressure or temperature, filled symbols - on decrease. Dashed lines are from the second order polynomial fits of the $P(T)$ data. Star - data point corresponding to two-step superconducting transition in Fig. 2a.

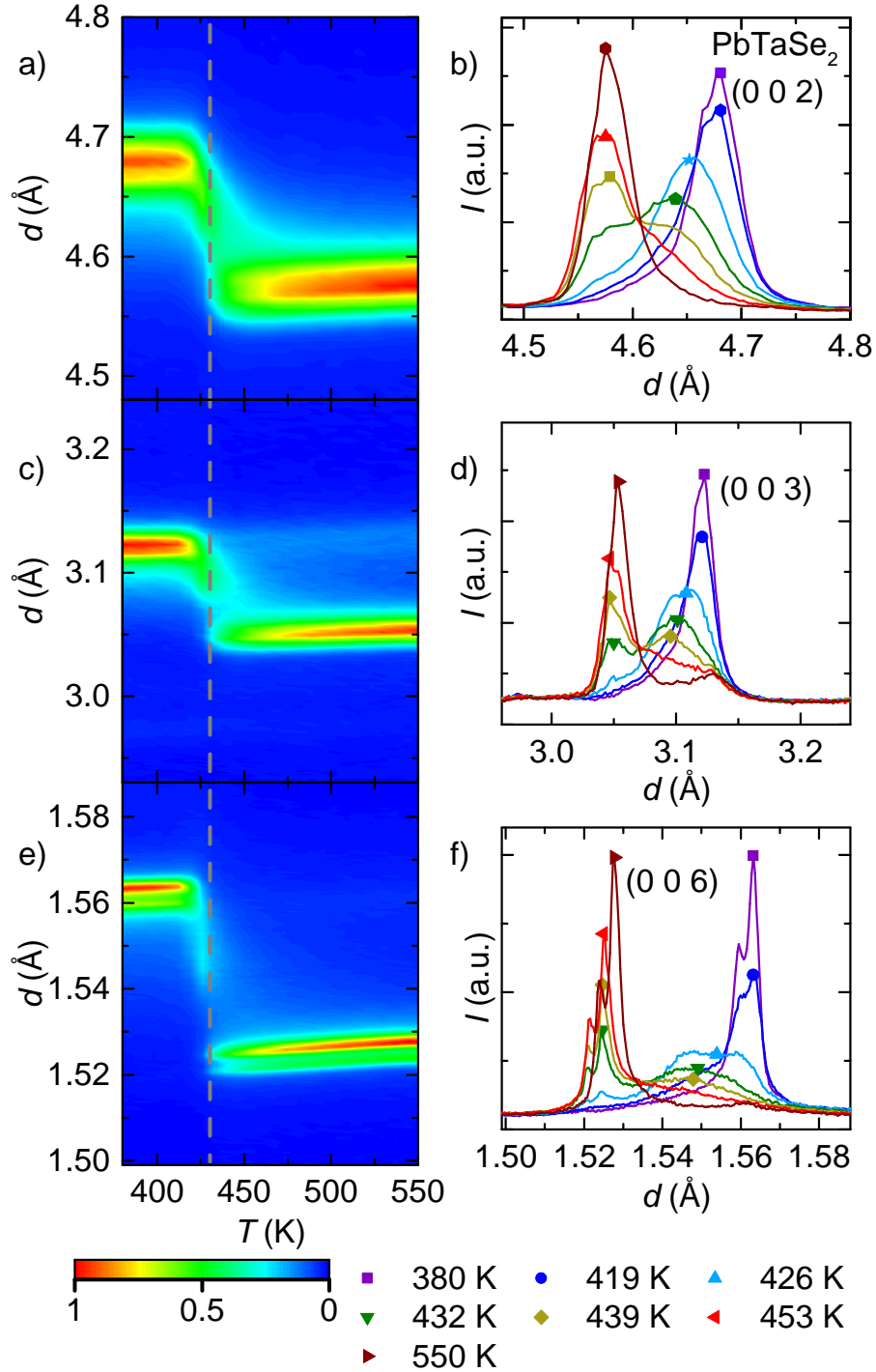


FIG. 10: (Color online) Evolution of the peaks corresponding to (0 0 2), (0 0 3), and (0 0 6) reflections at elevated temperatures (measured on heating) plotted as color maps of d -spacing vs. temperature [a), c), e)] (different colors correspond to different normalized intensities, the color scale is presented in the bottom left part of the figure), and selected 2θ scans plotted as intensity vs. d -spacing at different temperatures [b), d), f)].

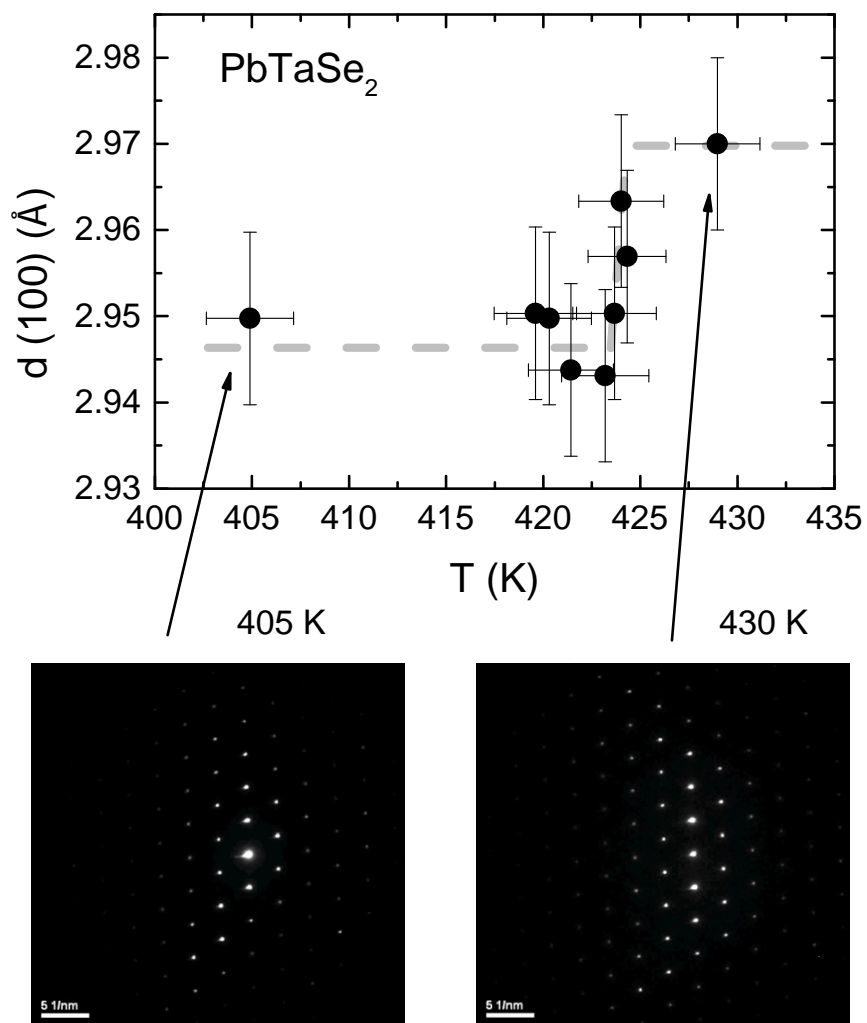


FIG. 11: In-plane TEM results at elevated temperatures. Upper panel: the basal plane d -spacing, $d(100)$ as a function of temperature. Lower panels: selected area diffraction patterns at 405 K and 430 K. Gray dashed line is a guide to the eye.

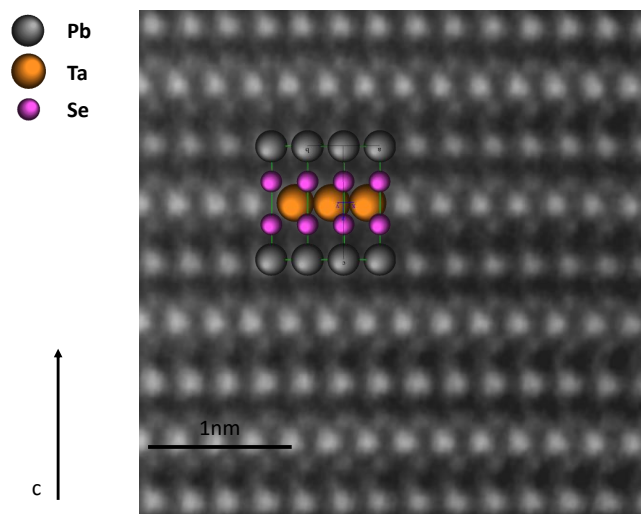


FIG. 12: (Color online) Atomic resolution TEM imaging at room temperature. The arrow shows *c*-direction. Note fairly large gap between the Ta/Se layer and Pb layer.

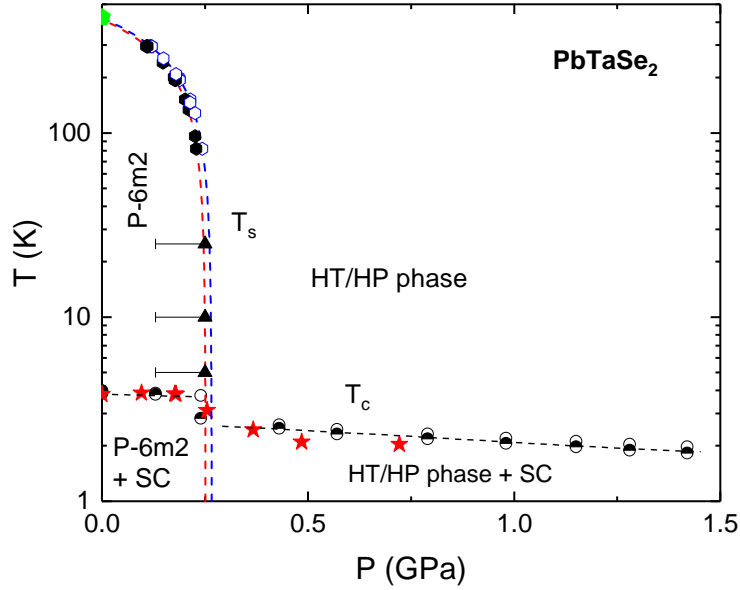


FIG. 13: (Color online) Pressure - temperature phase diagram on a semi-log scale. Four regions in the phase diagram are labeled. Lines are guides to the eye. HT / HP denotes high temperature / high pressure. Green pentagon - ambient pressure data point from high temperature TEM. Open and filled hexagons - resistively detected structural transitions in the He - gas pressure data. Triangles - resistively detected structural transitions in the piston - cylinder cell data (see Fig. 8). Open and half-filled circles - resistively measured superconducting transition temperature. Stars - T_c values determined from the magnetization.

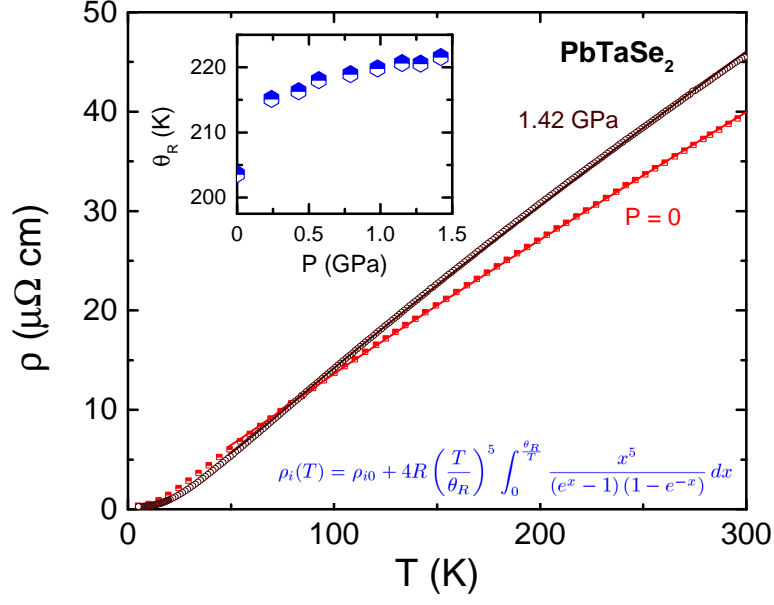


FIG. 14: (Color online) Examples of the Bloch - Grüneisen fits of resistivity, using the equation in the bottom of the plot³⁶. Fits of the data between 50 K and 300 K are shown as lines for $P = 0$ and $P = 1.42$ GPa. Inset: Debye temperature as a function of the low temperature pressure values (see text for more details).

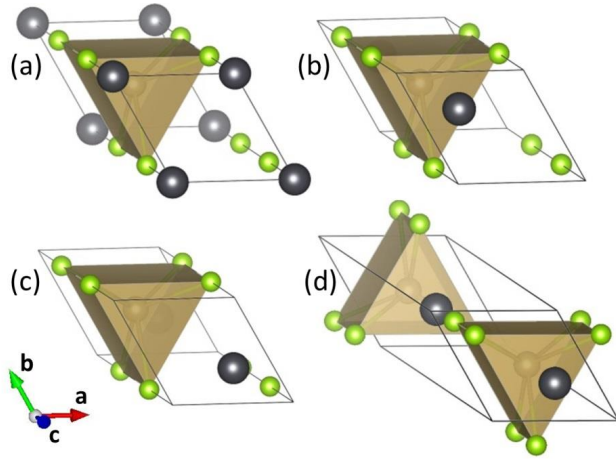


FIG. 15: (Color online) Crystal structures of (a) $P\bar{6}m2$, (b) $Pb-1c$, (c) $Pb-1e$ and (d) $hex2$ PbTaSe_2 structures. Dark grey and green balls are Pb and Se atoms. Shaded balls at centers of brown triangle prisms are Ta atoms.

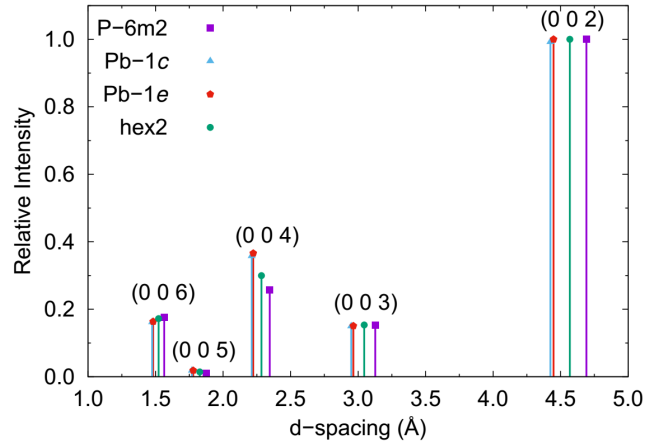


FIG. 16: (Color online) Simulated XRD patterns of four different PbTaSe₂ structures considered in first principles calculations. The peak indexes of the *hex2* structure are (0 0 2l) of the labeled ones and the diffraction intensities of all structures are normalized by the intensity of their (0 0 2)-peak. (See text and Fig. 15 for details.)

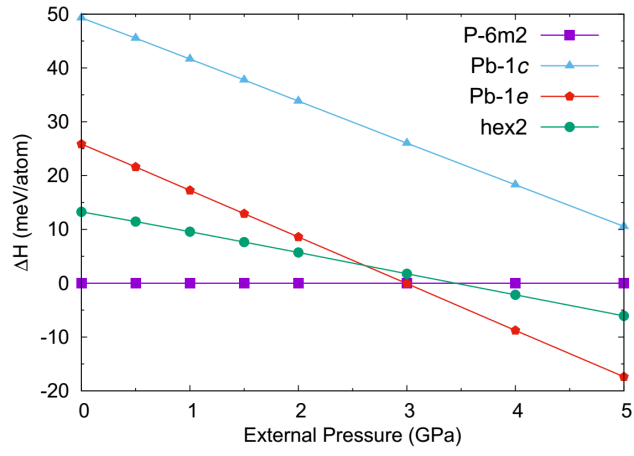


FIG. 17: (Color online) Formation enthalpy differences of the PbTaSe_2 structures under pressure with respect to the $P\bar{6}m2$ structure.

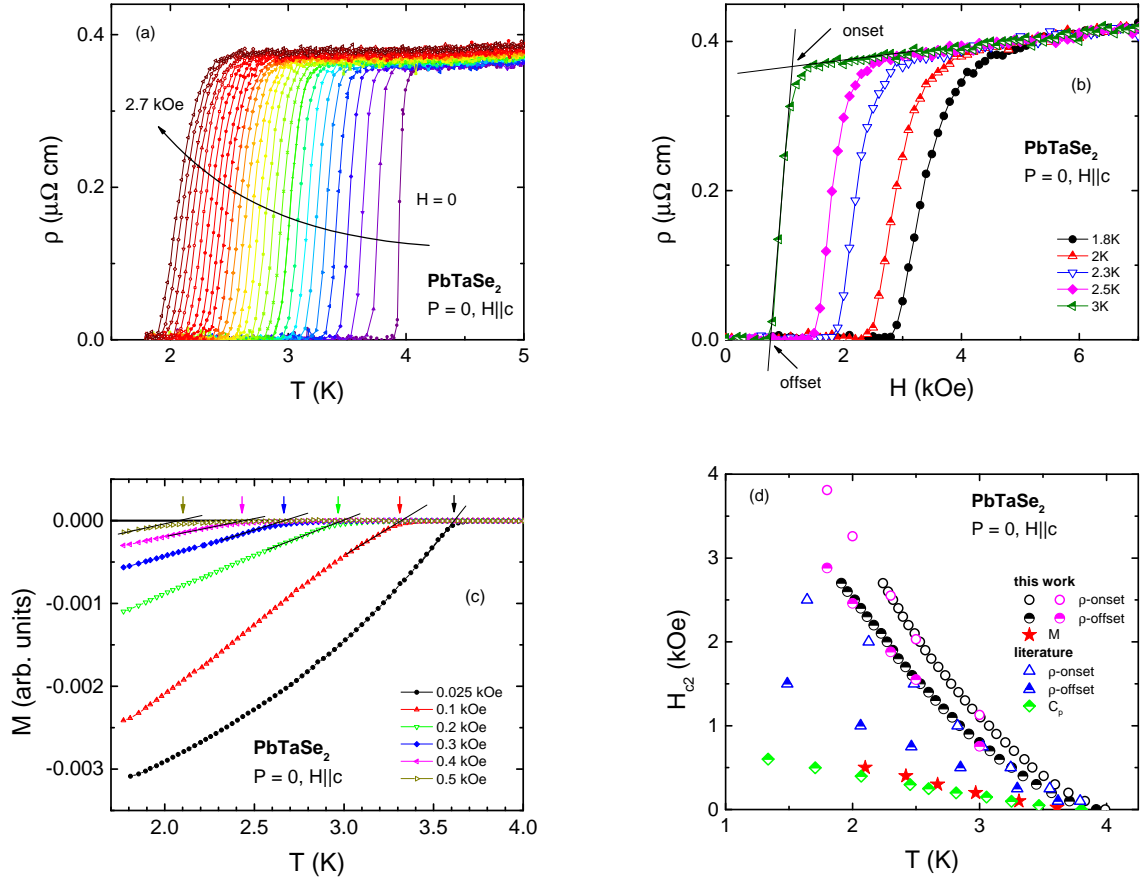


FIG. 18: (Color online) (a) Low temperature $\rho(T)$ data taken in applied magnetic fields from $H = 0$ to $H = 2.7$ kOe with 0.1 kOe steps. (b) Field dependent resistivity in fixed magnetic fields. Onset and offset criteria are shown for 3 K dataset. (c) Low temperature zero - field - cooled magnetization data taken in different magnetic fields. Arrows mark the superconducting transition temperatures. (d) Zero pressure $H_{c2}(T)$ data for $H \parallel c$ obtained from resistivity (onset and offset criteria) - red circles $\rho(H)$, black circles $\rho(T)$, and magnetic susceptibility data - stars, plotted together with the literature data⁸ from resistivity (triangles) and heat capacity (rhombi) measurements in magnetic field.

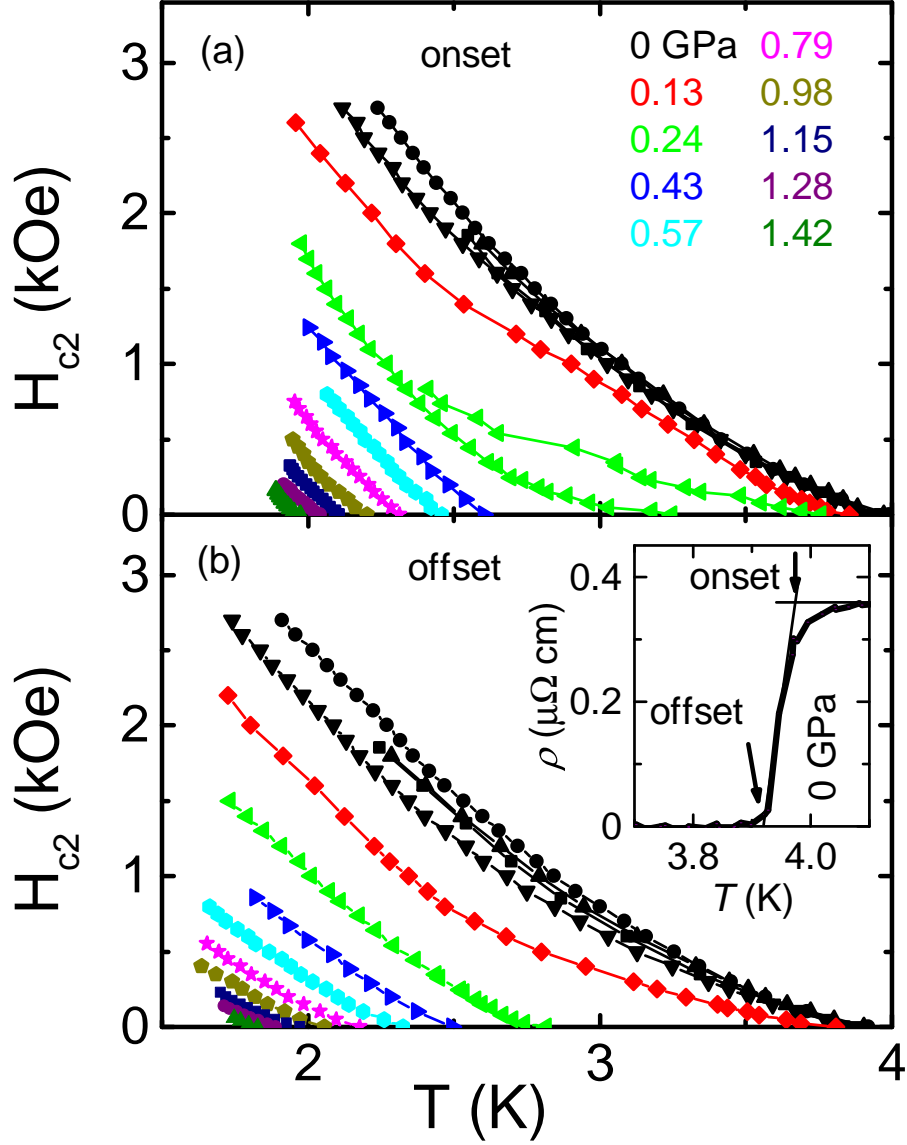


FIG. 19: (Color online) $H_{c2}(T)$ data for $H \parallel c$ obtained from resistivity (onset and offset criteria) at different pressures. Inset shows the definition of the criteria used. Note that there are two sets of data for $P = 0.24$ GPa using the onset criterion. Since the resistively measured superconducting transition at this pressure has two steps [Fig. 2(a)] and this shape of the transition persists in applied magnetic fields, two possible onset criteria were used.

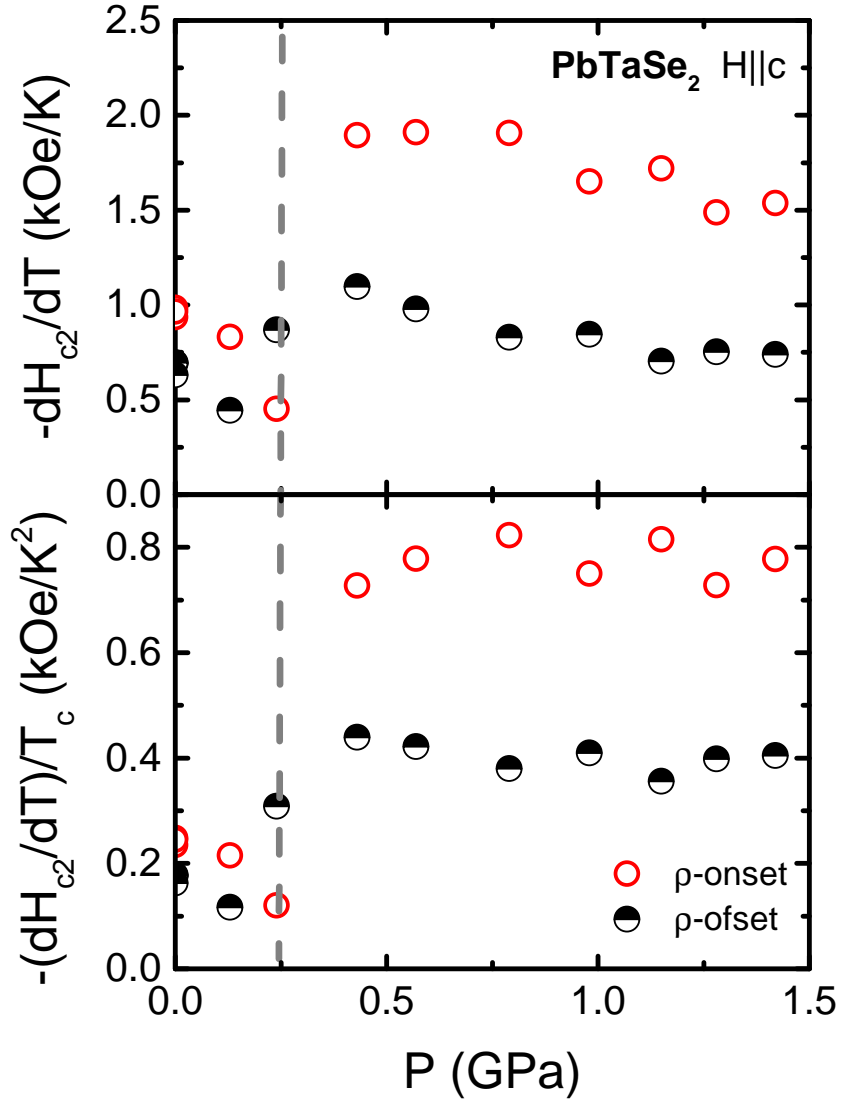


FIG. 20: (Color online) Pressure dependence of the initial, close to $T_c(H = 0)$, slope of the upper critical field for $H||c$, plotted as $-dH_{c2}/dT(P)$ and $-(dH_{c2}/dT)/T_c(P)$