



CHORUS

This is the accepted manuscript made available via CHORUS. The article has been published as:

Raman scattering in correlated thin films as a probe of chargeless surface states

Brent Perreault, Johannes Knolle, Natalia B. Perkins, and F. J. Burnell

Phys. Rev. B **94**, 060408 — Published 17 August 2016

DOI: [10.1103/PhysRevB.94.060408](https://doi.org/10.1103/PhysRevB.94.060408)

Raman scattering in correlated thin films as a probe of chargeless surface states

Brent Perreault,¹ Johannes Knolle,² Natalia B. Perkins,¹ and F. J. Burnell¹

¹*School of Physics and Astronomy, University of Minnesota, Minneapolis, Minnesota 55455, USA*

²*Department of Physics, Cavendish Laboratory, JJ Thomson Avenue, Cambridge CB3 0HE, U.K.*

(Dated: May 20, 2016)

Several powerful techniques exist to detect topologically protected surface states of weakly-interacting electronic systems. In contrast, surface modes of strongly interacting systems which do not carry electric charge are much harder to detect. We propose resonant light scattering as a means of probing the chargeless surface modes of interacting quantum spin systems, and illustrate its efficacy by a concrete calculation for the 3D hyperhoneycomb Kitaev quantum spin liquid phase. We show that resonant scattering is required to efficiently couple to this model's sublattice polarized surface modes, comprised of emergent Majorana fermions that result from spin fractionalization. We demonstrate that the low-energy response is dominated by the surface contribution for thin films, allowing identification and characterization of emergent topological band structures.

Introduction. One of the most striking recent developments in condensed matter physics has been the discovery that certain types of three-dimensional (3D) band structures harbor *topologically protected surface states*, which cannot be gapped out without breaking a bulk symmetry. Systems with such surface states include topological insulators [1–3], Weyl semimetals [4–9], and a number of others [10, 11]. In these weakly-interacting systems where the quasiparticles carry electric charge, theoretical predictions have quickly led to experimental detection: the Dirac cone surface states of 3D topological insulators were first detected several years ago [12–14] using high-resolution angle-resolved photoemission spectroscopy (ARPES). More recently, ARPES has also detected the Fermi arcs characteristic of Weyl semimetals in compounds TaAs, TaP, NbAs and NbP [15–18].

Such surface states are not restricted to weakly-interacting electronic systems. In fact, topological surface states have been predicted in a number of Mott-insulating systems where they often originate from spin fractionalization in quantum spin liquids (QSLs) [19–22]. This intriguing possibility poses an experimental challenge: since surface probes such as ARPES and STM couple to charge, then how can such chargeless surface states be detected? For bulk properties of chargeless topological states, much progress has been made recently in probing candidate QSLs using inelastic neutron [23–32] and Raman [33–40] scattering. Both measurements couple to spin degrees of freedom (d.o.f.), and hence can give signatures of fractionalized *spinon* excitations.

Here we study inelastic light scattering as a probe of the chargeless topological surface states that can arise in strongly-interacting systems. We focus on the example of the Kitaev QSL on the hyperhoneycomb lattice [41, 42], which is known to harbor such boundary states [10, 21]. This model is of particular interest because the insulating magnet β -Li₂IrO₃ [43, 44] is believed to be described by an effective Hamiltonian on a hyperhoneycomb lattice with dominant Kitaev-type interactions [45–53]. Our main findings are that (1) the surface modes can

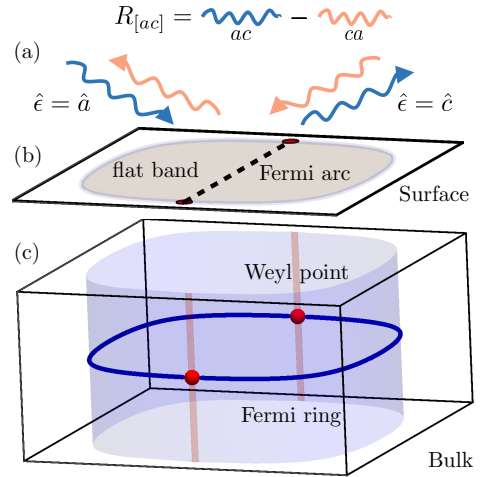


FIG. 1. (c) Schematic of the Fermi ring and limiting positions of the Weyl points of the emergent chargeless Majorana fermions as $\kappa \rightarrow 0$ in the bulk Brillouin Zone (BZ). (b) the projection of the Weyl points onto the surface BZ and the surface flat band ($\kappa = 0$) and Fermi arc ($\kappa > 0$). (a) illustrates a resonant light-scattering process in the anti-symmetric channel that can probe the surface modes.

be identified by considering the low-energy power laws in spectra of thin films; and (2) the surface states contribute significantly to the light-scattering response only in the resonant regime [34, 54, 55].

Our proposal is summarized schematically in Fig. 1. The idea is that though light scattering is typically a bulk probe, when applied to sufficiently thin films the surface responses can be observable if the density of states (DOS) of surface states decays more slowly with frequency than the bulk DOS so that the surface response dominates at sufficiently low energies. We show that this occurs for both time-reversal (TR) symmetric and TR broken [22] topological phases of the hyperhoneycomb Kitaev QSL, allowing direct experimental detection of the corresponding topological surface states.

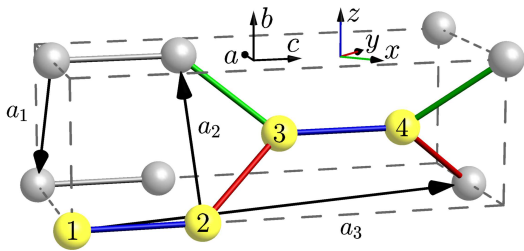


FIG. 2. The hyperhoneycomb lattice, \mathcal{H} -0. The lattice vectors are $a_{1/2} = (-1, \mp\sqrt{2}, 0)$ and $a_3 = (-1, 0, 3)$.

3D Kitaev model. The Kitaev Hamiltonian [56] is

$$H_K = J \sum_{\langle ij \rangle_\alpha} \sigma_i^\alpha \sigma_j^\alpha, \quad (1)$$

where $\langle ij \rangle_\alpha$ are nearest-neighbor (NN) bonds, σ_j^α are the Pauli matrices, and $\alpha = \{x, y, z\}$ specifies which components of spins interact along each of three inequivalent bonds. The model is solved exactly by replacing the spin operator at each site j with four Majorana fermions c_j and b_j^α via $\sigma_j^\alpha = ib_j^\alpha c_j$ [56]. In terms of Majorana fermions, the Hamiltonian in Eq. (1) takes the form $H_K = J \sum_{\langle ij \rangle_\alpha} u_{\langle ij \rangle_\alpha} c_i c_j$, where the $u_{\langle ij \rangle_\alpha} \equiv ib_i^\alpha b_j^\alpha$ form a \mathbb{Z}_2 lattice gauge field for the c_j Majoranas. The $u_{\langle ij \rangle_\alpha}$ commute with each other and the Hamiltonian, and are therefore static.

In the Majorana description, the physical d.o.f are the fluxes of the \mathbb{Z}_2 gauge theory on elementary plaquettes of the lattice, and dispersing Majorana spinons c_i in the flux background. The ground state on a given lattice corresponds to a fixed flux configuration, which is flux free for the \mathcal{H} -0 lattice [41, 53, 57].

In this flux-free configuration, the Hamiltonian is quadratic in the Majorana spinons $\{c_i\}$. Diagonalization leads to a band structure with two distinct bands on the \mathcal{H} -0 lattice, where the modes at zero energy form a one-dimensional Fermi ring shown schematically by the blue line in Fig. 1(c). With open boundaries, surface flat bands occur within the projection of the Fermi ring onto the surface BZ (see Fig. 1(b)) [21]. This band structure and the associated surface states are protected by a combination $\mathcal{C} = IT$ of inversion and TR symmetry, which is a sublattice symmetry within the Majorana spinon description [21]. The gapless surface modes are sublattice polarized, and hence protected from back-scattering [10].

Applying a magnetic field $H_h = \sum_{j,\alpha} h^\alpha S_j^\alpha$, where $\{h^x, h^y, h^z\}$ are all nonzero, destroys the Fermi ring by breaking TR, and therefore the sublattice symmetry \mathcal{C} . If h is much smaller than the flux gap Δ , the low-energy Hamiltonian retains the zero-flux ground-state flux configuration, and the first non-vanishing TR symmetry-breaking terms appear at third order in h [56]. The rel-

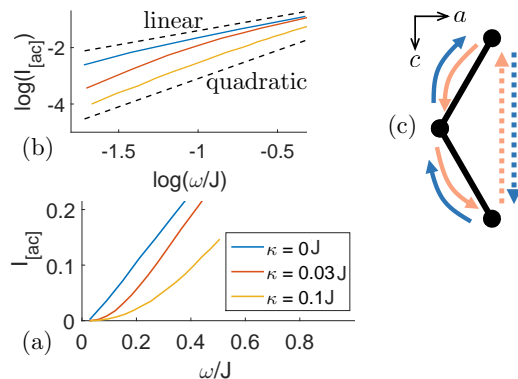


FIG. 3. (a) Low-energy bulk scattering intensity in the antisymmetric channel $I_{[ac]}$ for various values of the effective perturbation κ and (b) the log-log version. The index $[ac]$ represents the channel antisymmetrized over “in” and “out” polarizations in the a and c directions [58]. (c) illustrates resonant light-scattering processes contributing to the $[ac]$ channel, which mimics the DOS’.

evant term at low-energy is

$$H_h = \kappa \sum_{\langle\langle ij \rangle\rangle_\gamma} \sigma_i^\alpha \sigma_l^\gamma \sigma_j^\beta = i\kappa \sum_{\langle\langle ij \rangle\rangle_\gamma} \tilde{u}_{\langle\langle ij \rangle\rangle_\gamma} c_i c_j, \quad (2)$$

where $(il), (jl)$ are pairs of neighbors along a bond of type α and β respectively, and γ is complementary. In terms of Majorana spinons this gives a next-nearest neighbor (NNN) hopping term with $\tilde{u}_{\langle\langle ij \rangle\rangle_\gamma} \equiv u_{\langle il \rangle_\alpha} u_{\langle lj \rangle_\beta}$ and $\kappa \sim h^x h^y h^z / \Delta^2$. On the \mathcal{H} -0 lattice, the magnetic field perturbation gaps out the Fermi ring, leaving a pair of Weyl points [22], which are fixed to the Fermi energy by the unbroken inversion symmetry [57]. The surface flat bands are reduced to surface Fermi-arcs connecting the projection of the Weyl points in the surface Brillouin zone (BZ) [5] (see Fig. 1).

Raman scattering. The key features of the bulk and surface Majorana spinon bands described above can be detected using inelastic photon spectroscopy. To establish this, we first review some important aspects of the derivation of the Raman operator in Mott insulators [34, 54, 55] to show that the magnetic field has a negligible effect, and clarify the resonant processes of interest.

Most inelastic light scattering of low-energy magnetism has been in the regime of Raman spectroscopy [59, 60], which probes excitations ranging 1–100 meV (10–1000 cm^{-1}) [60, 61]. However, given the expected Kitaev exchange-interaction scale (J) in the honeycomb iridates of around 2–4 meV [46, 62, 63], the energy scales discussed here are in the regime of Brillouin scattering: 0.01–1 meV (0.1–10 cm^{-1}) [60, 61], which differs from Raman only by the spectrometer. We continue to refer to ‘Raman’ operators and spectra although each applies for both experiments.

At zero temperature the Raman response can be written as a correlation function of scattering operators

$$I(\omega) = 2\pi \int d\omega e^{i\omega t} \langle R(t)^\dagger R(0) \rangle, \quad (3)$$

where $\omega = \omega_{\text{in}} - \omega_{\text{out}}$ is the total energy transferred from the in- and out-going photons to the system, and in the following we assume that $\omega \ll \omega_{\text{in(out)}}$. For a Mott-insulator, the Raman operator is

$$R = -PH_t^{\epsilon_{\text{out}}} (H - i\eta)^{-1} H_t^{\epsilon_{\text{in}}} P, \quad (4)$$

where P is the projector onto states with a fixed electron occupancy per site, ϵ_{in} and ϵ_{out} are the incoming and outgoing photon polarization vectors, respectively, and H_t^ϵ is the electron/photon vertex for the polarization ϵ given by

$$H_t^\epsilon = \left(\frac{ie}{\hbar c} \right) \sum_{n,n',\gamma,\gamma'} (\mathbf{d}_{n,n'} \cdot \boldsymbol{\epsilon}) T_{n,n'}^{\gamma,\gamma'} a_{n,\gamma}^\dagger a_{n',\gamma'}. \quad (5)$$

Here $T_{n,n'}^{\gamma,\gamma'}$ describes the electronic hopping matrix, $\mathbf{d}_{n,n'}$ is the spatial vector from lattice site n to site n' , and $a_{n,\gamma}$ is the annihilation operator for an electron at site n with γ running over spin and orbitals.

The full Hamiltonian in the resolvent $(-H + i\eta)^{-1}$ can be written as $H = H_t + H_U$, where H_t is the electronic hopping Hamiltonian, and for convenience we define the interaction term H_U describing the on-site electron interactions, such as Coulomb repulsion and Hund's coupling, relative to the initial photon energy: $H_U = H_{\text{int}} - \omega_{\text{in}}$. The resolvent $(-H + i\eta)^{-1}$ can be formally expanded to give

$$R = PH_t^{\epsilon_{\text{out}}} [H_U^{-1} + H_U^{-1} H_t H_U^{-1} + \dots] H_t^{\epsilon_{\text{in}}} P, \quad (6)$$

(we dropped $-i\eta$). In the presence of a magnetic field, the resolvent in Eq. (6) has an additional small parameter proportional to h/U :

$$[H_U + H_t + H_h]^{-1} = H_U^{-1} [\mathbb{1} + H_t H_U^{-1} + H_h H_U^{-1} + \dots].$$

Hence, in the regime $h \ll t$ we can neglect the magnetic field during the scattering process.

If $t/(U - \omega_{\text{in}})$ is small, electron hopping is strongly suppressed, and the derivation of the Raman operator proceeds as it does for a spin-exchange Hamiltonian. The lowest-order terms contributing to R are linear in $t/(U - \omega_{\text{in}})$ and have the well-known Loudon-Fleury (LF) form [64]

$$R = \sum_{n,n';\alpha,\beta} (\mathbf{d}_{n,n'} \cdot \boldsymbol{\epsilon}_{\text{in}}) (\mathbf{d}_{n,n'} \cdot \boldsymbol{\epsilon}_{\text{out}}^*) H_{n,n'}^{\alpha,\beta} \sigma_n^\alpha \sigma_{n'}^\beta, \quad (7)$$

where $H_{n,n'}^{\alpha,\beta}$ defines the generic spin-exchange Hamiltonian on the bonds $\langle n, n' \rangle$, which we take as the pure Kitaev model.

For NN Kitaev interactions, the LF vertex does not couple to fluxes, probing only Majorana spinon band structures [37]. However, because the NN spin-exchange processes that enter into (7) involve both sublattices, *the LF vertex cannot couple to the sublattice-polarized surface flat bands*. Moreover, even if the sublattice symmetry is broken with a small magnetic field, the surface states are still approximately polarized, and the LF vertex couples only very weakly to the surface states.

In order to detect the gapless surface modes, a Raman operator should contain terms coupling two Majorana spinons on the same sublattice. Such a term can appear by tuning the photon frequency resonant with the Mott gap so that $t/(U - \omega_{\text{in}})$ is no longer very small, and higher-order terms in the expansion of Eq. (6) contribute intermediate electron hops. Two such resonant hopping processes, involving three different sites and an NNN electronic hop, are illustrated in Fig. 3(c); such processes can lead to the desired low-energy term:

$$\begin{aligned} R_{\text{res}} &= i\kappa' \sum_{\langle\langle ij \rangle\rangle_\gamma} \sigma_i^\alpha \sigma_j^\gamma \sigma_j^\beta \times A_{ilj} \\ &= -\kappa' \sum_{\langle\langle ij \rangle\rangle_\gamma} \tilde{u}_{\langle\langle ij \rangle\rangle_\gamma} c_i c_j \times A_{ilj} \end{aligned} \quad (8)$$

where κ' contains the electron-photon coupling and spin-exchange constants. There are other three-spin terms with α, β , and γ permuted in Eq. (8) that create fluxes and are therefore unimportant at low energies. The computation of the resonant light-scattering matrix elements follows Refs. 55 and 34; details for the iridates will be presented elsewhere.

Unlike the LF scattering vertex, the polarization-dependent factor $A_{ilj} = [(\boldsymbol{\epsilon}_{\text{in}} \cdot \mathbf{d}_{ji}) (\boldsymbol{\epsilon}_{\text{out}}^* \cdot \mathbf{d}_{il}) - (\boldsymbol{\epsilon}_{\text{out}}^* \cdot \mathbf{d}_{ji}) (\boldsymbol{\epsilon}_{\text{in}} \cdot \mathbf{d}_{il})]$, is only non-zero in polarization channels that are anti-symmetric in the exchange of in and out polarizations. This requires the use of polarization channels that do not appear with only the LF operator Eq. (7). We focus on one of these, the anti-symmetric $[ac]$ combination of the two-photon processes (illustrated in Fig. 1), in which one photon has polarization along a and another along c . Due to the low symmetry of the model, isolating this channel requires observation of several directly-observable spectra. However, in the resonant regime the anti-symmetric part is expected to dominate the response in a few directly-observable channels, such as I_{ab} [58]. Because of the form of Eq. (8), the computation of low-energy Raman spectra for this system amounts to evaluating four-spin dynamic correlators of a quadratic fermionic Hamiltonian [37, 40].

Results. The bulk light-scattering intensity at low frequency is shown for different values of κ in Figs. 3(a) and 3(b). The scattering intensity is almost linear at $\kappa = 0$ and close to quadratic at $\kappa = 0.03J$ [65] directly reflecting power law changes in the Majorana spinon DOS anti-

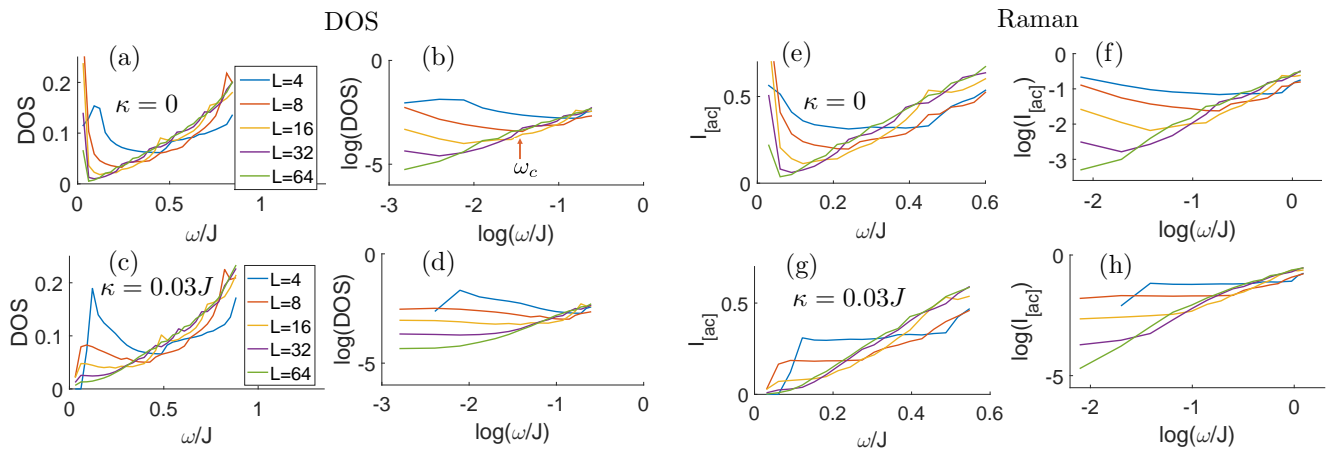


FIG. 4. The low-energy DOS is plotted for (a) $\kappa = 0$ and (c) $\kappa = 0.03J$ for different slab widths L , measured in unit cells in the a_1 direction. The low-energy peaks [plateaus] in the DOS are due to the surface flat bands in (a) [surface Fermi-arcs in (c)]. (b) and (d) show the corresponding log-log plots illustrating the crossover between power laws describing the surface contribution to ones describing the bulk. (e), (f), (g), and (h) are the same plots for the resonant scattering intensity $I_{[ac]}$ in the antisymmetric $[ac]$ channel. The suppression of low-frequency modes in (g) compared to (c) is due to suppression by the scattering matrix elements.

pated in Ref. [22].

To study the Brillouin/Raman scattering response of the surface modes, we consider systems that are infinite in two directions but have a finite number L of unit cells along the stacking direction a_1 . This is one of several cutting planes with similar flat bands. However, cutting planes whose normal vector lies in the plane of \mathbf{b} and $a_3 - a_1 - a_2$ do not receive a projection from the interior of the bulk Fermi ring and therefore are not required to host a flat band.

Figs. 4(a) and (b) show the low-frequency behavior of the DOS in the unperturbed model ($\kappa = 0$) in a linear and log scale, respectively. The low-energy peak in the DOS seen for different slab thicknesses indicates the presence of the flat band. The position of this peak is not strictly at zero frequency due to the top and bottom surface modes hybridizing, shifting it to higher energies. The peak drifts towards zero frequency for larger L , but its height relative to the rest of the spectrum decreases due to decreasing surface-to-bulk ratio. At low energies our results are consistent with the power law -1 expected for the surface states, in contrast to the linear power law seen above the crossover frequency ω_c . Figs. 4(e) and (f) show the scattering intensity in the $[ac]$ channel for $\kappa = 0$, where we find that the behavior of the resonant Raman intensity reflects the behavior of the DOS, as expected.

When $\kappa \neq 0$ most of the surface states are gapped, leaving only a surface Fermi arc at very low-energies, whose contribution to the DOS tends to a constant at zero frequency, in contrast with the quadratic power law seen above ω_c . In practice, this constant behavior is dwarfed by the leftover peak from the flat bands, which have hybridized due to the symmetry-breaking perturbation. Hence the difference between surface flat bands and

surface Fermi arcs is only detectable at energy scales below κ . We plot the DOS for $\kappa = 0.03J$ in Figs. 4(c) and (d). This value is below the local flux gap of $\Delta = 0.13J$ [32, 53, 57] putting it in the perturbative regime. We find that the flat band peaks are significantly suppressed upon introducing the magnetic field, although the low-energy power-laws in this case are not visible at the numerical resolution used of about $0.03J$. Similar behavior is observed in the Raman intensity shown in Figs. 4(g) and (h), up to some additional suppression of the flat-band peak due to matrix-element effects.

Experimentally, we expect that the low-energy peaks and power laws in the absence of a magnetic field should be discernible by Brillouin scattering for a film of thickness 20 or 30 unit cells or less, corresponding to 100 to 300nm in $\beta\text{-Li}_2\text{IrO}_3$.

Discussion. We have shown that low-frequency resonant light-scattering is a powerful probe of the QSL state, and can reveal both the bulk and surface Majorana spinon DOS in the 3D Kitaev QSL. For the hyperhoneycomb lattice, we find a bulk signature of the \mathcal{T} -broken Weyl spin liquid that arises upon perturbing the Kitaev Hamiltonian with a weak magnetic field, as well as a signature of topological surface states (both with and without \mathcal{T} -breaking) in thin films. Our main results are that (1) the Weyl spin liquid can be distinguished from the parent \mathcal{T} -symmetric state by the power law governing the low-frequency response; (2) the symmetry properties of the usual LF vertex do not allow it to couple to sub-lattice polarized low-energy surface modes; and (3) the resonant Raman operator arising from the three-spin interaction can be used to probe the system's topologically-protected surface states on thin films.

Besides being able to couple to the surface flat bands,

the anti-symmetric channels facilitate the task of separating the low-frequency response of the QSL from the contributions of acoustic phonons and Rayleigh scattering [66, 67]. Specifically, phonons contribute to antisymmetric channels only if they couple to resonant electron hops [66, 67]; hence these processes will be suppressed. Rayleigh scattering leaves the state unchanged after a single two-photon event so there is no difference between two polarization combinations.

Brillouin and Raman scattering on thin films are expected to be useful probes of surface modes in any other system with a large surface DOS relative to the bulk, which is typically the case for topological and symmetry-protected surface states. Hence, we expect that electronic Weyl semimetals can also be probed by light scattering in addition to conventional ARPES and STM techniques. The vanishing coupling between the non-resonant scattering operator and the surface modes is specific to Mott insulators with sublattice-polarized surface modes. Nonetheless, the same symmetries appear in the Kitaev model on a few other lattices including the harmonic honeycomb series [21, 44], and the $(8,3)c$ lattice [57]. Further studies on lattices with different symmetry combinations [57] are left for future work.

In addition, topological surface states without electric charge can also appear in non-fractionalized systems, e.g. from topological magnon bands in kagome ferromagnets [68]. Some of their bulk properties have been experimentally verified very recently [69, 70] and we predict that the accompanying topological magnon surface states can be identified in a similar fashion as presented here for their fractionalized counterparts.

In conclusion, we have shown that Brillouin and Raman scattering resonant with the Mott gap are useful probes of spin-liquid physics, and in layered systems can potentially be used to detect chargeless topological surface states that cannot be seen with conventional surface probes such as STM and ARPES. Though we have focused calculations on a 3D model QSL phase, the qualitative lessons apply more broadly and may prove useful in studying protected surface states arising in other strongly-correlated systems.

Acknowledgements. We acknowledge helpful discussions with K. O'Brien, D.L. Kovrizhin, R. Moessner, J. Rau, I. Rousochatzakis, A. Smith, and Y. Sizyuk. BP and FJB. acknowledge the hospitality of the Perimeter Institute. The work of BP was supported by the Torske Klubben Fellowship. JK is supported by a Fellowship within the Postdoc-Program of the German Academic Exchange Service (DAAD). NP acknowledges the support from NSF DMR-1511768. FJB is supported by NSF DMR-1352271 and Sloan FG-2015- 65927.

-
- [1] L. Fu, C. L. Kane, and E. J. Mele, Phys. Rev. Lett. **98**, 106803 (2007).
 - [2] J. E. Moore and L. Balents, Phys. Rev. B **75**, 121306 (2007).
 - [3] R. Roy, Phys. Rev. B **79**, 195322 (2009).
 - [4] L. Balents, Physics **4**, 36 (2011).
 - [5] X. Wan, A. Turner, A. Vishwanath, and S. Savrasov, Phys. Rev. B **83**, 205101 (2011).
 - [6] O. Vafek and A. Vishwanath, Annual Review of Condensed Matter Physics **5**, 83 (2014).
 - [7] B.-J. Yang and N. Nagaosa, Nature communications **5** (2014).
 - [8] A. C. Potter, I. Kimchi, and A. Vishwanath, Nature communications **5** (2014).
 - [9] B. Q. Lv, H. M. Weng, B. B. Fu, X. P. Wang, H. Miao, J. Ma, P. Richard, X. C. Huang, L. X. Zhao, G. F. Chen, et al., Phys. Rev. X **5**, 031013 (2015).
 - [10] S. Matsuura, P.-Y. Chang, A. P. Schnyder, and S. Ryu, New Journal of Physics **15**, 065001 (2013).
 - [11] Y. Chen, Y.-M. Lu, and H.-Y. Kee, Nature communications **6**, 6593 (2015).
 - [12] D. Hsieh, D. Qian, L. Wray, Y. Xia, Y. S. Hor, R. J. Cava, and M. Z. Hasan, Nature **452**, 970 (2008).
 - [13] Y. L. Chen, J. G. Analytis, J.-H. Chu, Z. K. Liu, S.-K. Mo, X. L. Qi, H. J. Zhang, D. H. Lu, X. Dai, Z. Fang, et al., Science **325**, 178 (2009).
 - [14] Y. Xia, D. Qian, D. Hsieh, L. Wray, A. Pal, H. Lin, A. Bansil, D. Grauer, Y. S. Hor, R. J. Cava, et al., Nature Physics **5**, 398 (2009).
 - [15] S.-Y. Xu, I. Belopolski, N. Alidoust, M. Neupane, G. Bian, C. Zhang, R. Sankar, G. Chang, Z. Yuan, C.-C. Lee, et al., Science (2015).
 - [16] S.-Y. Xu, I. Belopolski, D. S. Sanchez, C. Zhang, G. Chang, C. Guo, G. Bian, Z. Yuan, H. Lu, T.-R. Chang, et al., Science Advances **1** (2015).
 - [17] S.-M. Huang, S.-Y. Xu, I. Belopolski, C.-C. Lee, G. Chang, B. Wang, N. Alidoust, G. Bian, M. Neupane, C. Zhang, et al., Nature communications **6** (2015).
 - [18] C.-C. Lee, S.-Y. Xu, S.-M. Huang, D. S. Sanchez, I. Belopolski, G. Chang, G. Bian, N. Alidoust, H. Zheng, M. Neupane, et al., Phys. Rev. B **92**, 235104 (2015).
 - [19] D. Pesin and L. Balents, Nature Physics **6**, 376 (2010).
 - [20] Y. Zhang, Y. Ran, and A. Vishwanath, Phys. Rev. B **79**, 245331 (2009).
 - [21] R. Schaffer, E. K.-H. Lee, Y.-M. Lu, and Y. B. Kim, Phys. Rev. Lett. **114**, 116803 (2015).
 - [22] M. Hermanns, K. O'Brien, and S. Trebst, Phys. Rev. Lett. **114**, 157202 (2015).
 - [23] R. Coldea, D. A. Tennant, A. M. Tsvelik, and Z. Tylczynski, Phys. Rev. Lett. **86**, 1335 (2001).
 - [24] R. Coldea, D. A. Tennant, and Z. Tylczynski, Phys. Rev. B **68**, 134424 (2003).
 - [25] J. S. Helton, K. Matan, M. P. Shores, E. A. Nytko, B. M. Bartlett, Y. Yoshida, Y. Takano, A. Suslov, Y. Qiu, J.-H. Chung, et al., Phys. Rev. Lett. **98**, 107204 (2007).
 - [26] J. S. Helton, K. Matan, M. P. Shores, E. A. Nytko, B. M. Bartlett, Y. Qiu, D. G. Nocera, and Y. S. Lee, Phys. Rev. Lett. **104**, 147201 (2010).
 - [27] T.-H. Han, J. S. Helton, S. Chu, D. G. Nocera, J. A. Rodriguez-Rivera, C. Broholm, and Y. S. Lee, Nature **492**, 406410 (2012).

- [28] B. Fåk, E. Kermarrec, L. Messio, B. Bernu, C. Lhuillier, F. Bert, P. Mendels, B. Koteswararao, F. Bouquet, J. Ollivier, et al., *Phys. Rev. Lett.* **109**, 037208 (2012).
- [29] M. Punk, D. Chowdhury, and S. Sachdev, *Nature Physics* **10**, 289 (2014).
- [30] J. Knolle, D. L. Kovrizhin, J. T. Chalker, and R. Moessner, *Phys. Rev. Lett.* **112**, 207203 (2014).
- [31] J. Knolle, D. L. Kovrizhin, J. T. Chalker, and R. Moessner, *Phys. Rev. B* **92**, 115127 (2015).
- [32] A. Smith, J. Knolle, D. L. Kovrizhin, J. T. Chalker, and R. Moessner, *Phys. Rev. B* **92**, 180408 (2015).
- [33] P. Lemmens, G. Güntherodt, and C. Gros, *Physics Reports* **375**, 1 (2003).
- [34] W.-H. Ko, Z.-X. Liu, T.-K. Ng, and P. A. Lee, *Phys. Rev. B* **81**, 024414 (2010).
- [35] D. Wulferding, P. Lemmens, P. Scheib, J. Röder, P. Mendels, S. Chu, T. Han, and Y. S. Lee, *Phys. Rev. B* **82**, 144412 (2010).
- [36] D. Wulferding, P. Lemmens, H. Yoshida, Y. Okamoto, and Z. Hiroi, *Journal of Physics: Condensed Matter* **24**, 185602 (2012).
- [37] J. Knolle, G.-W. Chern, D. L. Kovrizhin, R. Moessner, and N. B. Perkins, *Phys. Rev. Lett.* **113**, 187201 (2014).
- [38] S. N. Gupta, D. K. Mishra, K. Mehlatat, A. Balodhi, D.V.S.Muthu, Y. Singh, and A. K. Sood (2014), arXiv:1408.2239.
- [39] L. J. Sandilands, Y. Tian, K. W. Plumb, Y.-J. Kim, and K. S. Burch, *Phys. Rev. Lett.* **114**, 147201 (2015).
- [40] B. Perreault, J. Knolle, N. B. Perkins, and F. J. Burnell, *Phys. Rev. B* **92**, 094439 (2015).
- [41] S. Mandal and N. Surendran, *Phys. Rev. B* **79**, 024426 (2009).
- [42] E. K.-H. Lee, R. Schaffer, S. Bhattacharjee, and Y. B. Kim, *Phys. Rev. B* **89**, 045117 (2014).
- [43] T. Takayama, A. Kato, R. Dinnebier, J. Nuss, H. Kono, L. S. I. Veiga, G. Fabbris, D. Haskel, and H. Takagi, *Phys. Rev. Lett.* **114**, 077202 (2015).
- [44] K. Modic, T. E. Smidt, I. Kimchi, N. P. Breznay, A. Biffin, S. Choi, R. D. Johnson, R. Coldea, P. Watkins-Curry, G. T. McCandess, et al., *Nature communications* **5** (2014).
- [45] G. Jackeli and G. Khaliullin, *Phys. Rev. Lett.* **102**, 017205 (2009).
- [46] Y. Sizyuk, C. Price, P. Wölfle, and N. B. Perkins, *Phys. Rev. B* **90**, 155126 (2014).
- [47] J. G. Rau, E. K.-H. Lee, and H.-Y. Kee, *Phys. Rev. Lett.* **112**, 077204 (2014).
- [48] H.-S. Kim, E. K.-H. Lee, and Y. B. Kim, *EPL (Europhysics Letters)* **112**, 67004 (2015).
- [49] A. Biffin, R. D. Johnson, S. Choi, F. Freund, S. Manni, A. Bombardi, P. Manuel, P. Gegenwart, and R. Coldea, *Phys. Rev. B* **90**, 205116 (2014).
- [50] A. Biffin, R. D. Johnson, I. Kimchi, R. Morris, A. Bombardi, J. G. Analytis, A. Vishwanath, and R. Coldea, *Phys. Rev. Lett.* **113**, 197201 (2014).
- [51] E. K.-H. Lee and Y. B. Kim, *Phys. Rev. B* **91**, 064407 (2015).
- [52] E. K.-H. Lee, J. G. Rau, and Y. B. Kim, arXiv:1506.06746 (2015).
- [53] I. Kimchi, J. G. Analytis, and A. Vishwanath, *Phys. Rev. B* **90**, 205126 (2014).
- [54] B. S. Shastry and B. I. Shraiman, *Phys. Rev. Lett.* **65**, 1068 (1990).
- [55] B. S. Shastry and B. I. Shraiman, *International Journal of Modern Physics B* **5**, 365 (1991).
- [56] A. Kitaev, *Annals of Physics* **321**, 2 (2006), ISSN 0003-4916, January Special Issue.
- [57] K. O'Brien, M. Hermanns, and S. Trebst, *Phys. Rev. B* **93**, 085101 (2016).
- [58] Supplementary Material.
- [59] T. P. Devereaux and R. Hackl, *Rev. Mod. Phys.* **79**, 175 (2007).
- [60] W. Hayes and R. Loudon, *Scattering of light by crystals* (Courier Corporation, 2012).
- [61] A. Polian, *Journal of Raman Spectroscopy* **34**, 633 (2003).
- [62] V. M. Katukuri, S. Nishimoto, V. Yushankhai, A. Stoyanova, H. Kandpal, S. Choi, R. Coldea, I. Rousochatzakis, L. Hozoi, and J. van den Brink, *New Journal of Physics* **16**, 013056 (2014).
- [63] V. M. Katukuri, R. Yadav, L. Hozoi, S. Nishimoto, and J. v. d. Brink, arXiv:1603.04003 (2016).
- [64] P. A. Fleury and R. Loudon, *Phys. Rev.* **166**, 514 (1968).
- [65] The magnetic fields producing this value would be on the order of one Tesla in the iridates.
- [66] D. L. Rousseau, R. P. Bauman, and S. P. S. Porto, *Journal of Raman Spectroscopy* **10**, 253 (1981), ISSN 1097-4555.
- [67] M. V. Klein and S. P. S. Porto, *Phys. Rev. Lett.* **22**, 782 (1969).
- [68] H. Katsura, N. Nagaosa, and P. A. Lee, *Phys. Rev. Lett.* **104**, 066403 (2010).
- [69] M. Hirschberger, R. Chisnell, Y. S. Lee, and N. P. Ong, *Phys. Rev. Lett.* **115**, 106603 (2015).
- [70] R. Chisnell, J. S. Helton, D. E. Freedman, D. K. Singh, R. I. Bewley, D. G. Nocera, and Y. S. Lee, *Phys. Rev. Lett.* **115**, 147201 (2015).