



CHORUS

This is the accepted manuscript made available via CHORUS. The article has been published as:

Double resonance Raman modes in monolayer and few-layer MoTe₂

Huaihong Guo, Teng Yang, Mahito Yamamoto, Lin Zhou, Ryo Ishikawa, Keiji Ueno, Kazuhito Tsukagoshi, Zhidong Zhang, Mildred S. Dresselhaus, and Riichiro Saito

Phys. Rev. B **91**, 205415 — Published 12 May 2015

DOI: [10.1103/PhysRevB.91.205415](https://doi.org/10.1103/PhysRevB.91.205415)

Double resonance Raman modes in mono- and few-layer MoTe₂

Huahong Guo,^{1,*} Teng Yang,^{2,1,†} Mahito Yamamoto,³ Lin Zhou,^{4,5} Ryo Ishikawa,⁶ Keiji Ueno,⁷ Kazuhito Tsukagoshi,³ Zhidong Zhang,² Mildred S. Dresselhaus,^{4,5} and Riichiro Saito¹

¹*Department of Physics, Tohoku University, Sendai, Miyagi 980-8578, Japan*

²*Shenyang National Laboratory for Materials Science, Institute of Metal Research, Chinese Academy of Sciences, 72 Wenhua Road, Shenyang 110016, China*

³*International Center for Materials Nanoarchitectonics (WPI-MANA), National Institute for Materials Science (NIMS), Tsukuba, Ibaraki 305-0044, Japan*

⁴*Department of Electrical Engineering and Computer Science, Massachusetts Institute of Technology, Cambridge, Massachusetts 02139-4037, USA*

⁵*Department of Physics, Massachusetts Institute of Technology, Cambridge, Massachusetts 02139-4307, USA*

⁶*Department of Functional Materials Science, Graduate School of Science and Engineering, Saitama University, Saitama 338-8570, Japan*

⁷*Department of Chemistry, Graduate School of Science and Engineering, Saitama University, Saitama 338-8570, Japan*

(Dated: March 11, 2015)

We study the second-order Raman process of mono- and few-layer MoTe₂, by combining *ab initio* density functional perturbation calculations with experimental Raman spectroscopy using 532, 633 and 785 nm excitation lasers. The calculated electronic band structure and the density of states show that the resonance Raman process occurs at the M point in the Brillouin zone, where a strong optical absorption occurs due to a logarithmic Van-Hove singularity of electronic density of states. Double resonance Raman process with inter-valley electron-phonon coupling connects two of the three inequivalent M points in the Brillouin zone, giving rise to second-order Raman peaks due to the M point phonons. The calculated vibrational frequencies of the second-order Raman spectra agree with the observed laser-energy dependent Raman shifts in the experiment.

PACS numbers: 33.40.+f, 78.30.Hv, 63.20.kd, 63.22.Np, 63.22.-m, 31.15.A-

I. INTRODUCTION

Transition metal dichalcogenides (TMDs) have been intensively studied over past decades, and recently attracted tremendous attention for a number of applications¹⁻⁵, since TMDs have a finite energy band gap, which is more advantageous than graphene. Among the TMDs, MoTe₂ has a stronger spin-orbit coupling than other Mo related TMD materials (MoX₂, X = S, Se), which leads to a longer decoherence time both for valley and spin freedom⁵ and thus MoTe₂ is considered to be used for ideal valleytronic devices^{6,7}. Unlike other TMDs, MoTe₂ has unique structural properties, such as a thermally-induced structural phase transition at around 900°C from the α -phase diamagnetic semiconductor to the β -phase paramagnetic metal^{8,9}. MoTe₂ has the smallest direct energy band gap (~ 1.1 eV) at the K point (hexagonal corner) in the Brillouin zone (BZ) among all semiconducting TMDs, the band gap is similar to the indirect gap (~ 1.1 eV) of silicon^{10,11}. MoTe₂ is thus suitable for nanoelectronics devices^{4,5} and for studying exciton effects at the K points¹². Raman spectroscopy is a useful tool for characterizing TMDs since we get many information¹³⁻¹⁵ such as number of layers, electronic and phonon properties of TMDs. Recent Raman spectroscopy studies of monolayer and few-layer MoTe₂ using visible light (1.9 \sim 2.5 eV) show that there exists some unassigned Raman spectra which can not be assigned to a first-order Raman process^{5,16}, and the assignment of these Raman spectra is the subject of the

present paper.

Raman spectra of TMDs have been reported for several decades¹⁷⁻²⁹. The first-order Raman process in TMDs has been widely investigated and is now well understood^{16,21,22,24,30-34}. However, the study of second-order Raman spectra did not give consistent assignments for different TMDs^{18,25,26,35-37}. For example, Stacy *et al.*²⁶ and many other groups^{15,18,29,38-40} assigned some of the Raman peaks of 2H-MoS₂ to either combination or overtone second-order phonon modes occurring at the M point (center of hexagonal edge) in the Brillouin zone. Terrones *et al.*³⁷ also assigned phonon modes in few-layer WSe₂ according to the M point phonon. On the other hand, Sourisseau *et al.*^{27,28} ascribed the second-order Raman process of 2H-WS₂ to the K point phonons. Berkdemir *et al.*⁴¹ considered that electrons are scattered by the M point phonons between the K point and I point (one point along Γ K direction), and that this process is responsible for the double resonant Raman process in few-layer WS₂. Furthermore, Sekine *et al.*²⁵ found a dispersive Raman peak in 2H-MoS₂ and interpreted this peak in terms of a two-phonon Raman process at the K point. The different assignments for both few-layer or bulk MoS₂ and WS₂, either at the M or K points, have not been well investigated, since most of these assignments to second-order Raman peaks have been made merely by comparing phonon frequencies with reference to some inelastic neutron scattering results^{19,28}. Thus a detailed analysis with use of double resonance Raman theory is needed, especially for understanding both mono- and few-layer MoTe₂ that are discussed in this

paper.

In the present paper, we mainly study the second-order Raman spectra of monolayer MoTe₂, based on *ab initio* electronic band calculations, density functional perturbation theory and associated experimental Raman spectroscopy. From our electronic band structure calculation, we have found a saddle point of the energy dispersion at the M points in the BZ, which gives rise to two-dimensional Van Hove singularity (VHS) in the electronic density of states. The energy separation between two VHSs (2.30 and 2.07 eV) are matched to the 2.33 eV (532 nm) and 1.96 eV (633 nm) laser excitations in our experiment in which resonant optical absorption occurs at the M points. Consequently, inter-valley electron-phonon scattering process occurs between two of the three inequivalent M (M, M', M'') points, giving rise to a double resonance Raman process. We propose that this double resonance process occurring at the M points is essential for the interpretation of the observed second-order Raman peaks of MoTe₂. The experimental second-order Raman frequencies as a function of laser excitation energy confirm our interpretation of the double resonance Raman spectra.

Organization of the paper is as follows. In II and III, we briefly show computational details and experimental methods, respectively. In IV, both experimental and theoretical results for mono- and few-layer MoTe₂ Raman spectra are given. We assign second-order Raman peaks by comparing the calculated results with the observed Raman spectra. In V summary of the paper is given. Further information such as layer-number dependence is discussed in Supplemental Material.

II. COMPUTATIONAL DETAILS

We performed the electronic and phonon energy dispersion calculations on monolayer and few-layer MoTe₂ by using first-principles density functional theory within the local density approximation (LDA) as implemented in the Quantum-Espresso code⁴². The structures of monolayer and few-layer MoTe₂ that are used in the present experiment are α -MoTe₂¹⁶. The AA' and AA'A stacking geometries are used in the computational study for bi-layer and tri-layer MoTe₂, respectively, since these stacking geometries are more stable than the other possibilities⁴³. AA' stacking refers to the geometry which has a Mo (Te) atom of one layer on top of a Te (Mo) atom of the other layer. The few-layer MoTe₂ are separated by 25 Å from one another in a unit cell of the calculation to eliminate the inter-few-layer interaction. We used projector augmented-wave (PAW) pseudopotentials⁴⁴ with a plane-wave cutoff energy of 65 Ry to describe the interaction between electrons and ions. The spin-orbit split electronic band structures were calculated by relativistic pseudopotentials derived from an atomic Dirac-like equation. The atomic coordinates are relaxed until the atomic force is less than 10⁻⁵ Ry/Bohr. The lattice parame-

ters used in this paper are listed in Table S1 and agree well with the experiment and other calculations^{32,45,46}. The Monkhorst-Pack scheme⁴⁷ is used to sample the Brillouin zone (BZ) over a 17×17×1 *k*-mesh for MoTe₂. The phonon energy dispersion relations of MoTe₂ are calculated based on density functional perturbation theory⁴⁸. In order to visualize the vibrational modes at the M point, we use a 2×2×1 supercell in which the M point is zone-folded to the Γ point in the folded BZ.

The optical absorption spectrum is calculated by the real (ϵ') and imaginary (ϵ'') parts of the dielectric function as a function of photon energy, respectively, based on the PAW methodology⁴⁹ and the conventional Kramers-Kronig transformation. The absorption coefficient α is described by $\alpha = 4\pi\kappa E_\gamma/(hc)$, where E_γ is the incident laser excitation energy, h the Planck constant, c the speed of light, and κ is the extinction coefficient⁵⁰, that is, $\kappa = \sqrt{(\sqrt{\epsilon'^2 + \epsilon''^2} - \epsilon')/2}$.

III. EXPERIMENTAL METHOD

Bulk crystals of α -MoTe₂ were prepared through a chemical vapor transport method⁵¹. Atomically thin crystals of MoTe₂ were mechanically exfoliated from the bulk crystals onto silicon substrates with a 90 nm-thick oxide layer on top. The thicknesses of the atomic crystals were identified using optical microscopy and first-order Raman spectroscopy¹⁶. Raman spectroscopy measurements for monolayer MoTe₂ were performed using 532, 633 and 785 nm excitation lasers for discussing the observed phonon dispersion due to double resonance Raman theory⁵². Raman spectroscopy studies of few-layer MoTe₂ under 532 nm laser excitation were also performed and the results are discussed in the supporting materials. The grating sizes were 1200, 1800 and 2400 lines/mm for the 785, 633 and 532 nm laser excitation measurements, respectively. The magnification of the objective lens was 100x. The accumulation times were 150-200 seconds. The laser power was kept below 0.1 mW, 0.2 mW and 3.0 mW for the 532, 633 and 785 nm excitation lasers, respectively, in order to avoid damage to the samples. All measurements were performed at room temperature in the backscattering configuration. Since this paper gives greater emphasis to a theoretical understanding of the 2nd-order Raman scattering processes, we do not present many experimental details. However, more details about the characterization of the number of layers in our MoTe₂ samples can be obtained in one of the previous works on MoTe₂ synthesis and characterization, based on the first-order Raman spectra¹⁶.

IV. RESULTS AND DISCUSSION

Figure 1(a) shows Raman spectra of mono- to tri-layer MoTe₂ under the 532 nm (2.33 eV) laser excitation.

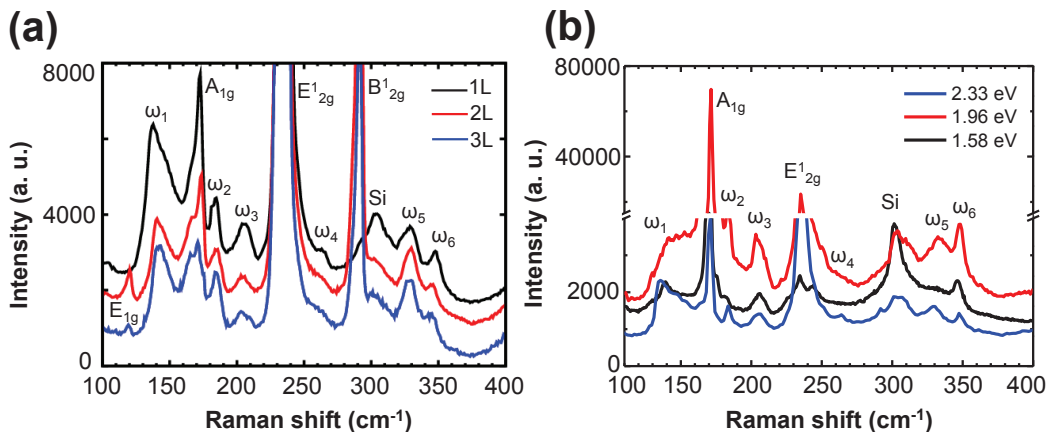


Figure 1: (Color online) (a) Raman spectra of mono-, bi-, and tri-layer MoTe₂ under 2.33 eV (532 nm) laser excitation energy, showing the small intensity peaks ω_i ($i = 1, 2, \dots, 6$) and an additional calibration peak from Si besides the typical Raman peaks of A_{1g} , E_{2g}^1 and B_{2g}^1 that are frequently observed in MoTe₂^{5,16}. (b) Raman spectra of monolayer MoTe₂ under 2.33 eV (532 nm), 1.96 eV (633 nm), and 1.58 eV (785 nm) laser excitation energies.

The Raman spectra show three strong peaks, including the in-plane E_{2g}^1 mode and the out-of-plane A_{1g} mode for monolayer and few-layer MoTe₂, as well as the E_{1g} mode and the B_{2g}^1 mode for bi- and tri-layer MoTe₂, that were observed previously^{5,16,53}. These spectra are assigned to the first-order Raman spectra of the Γ point phonons¹⁶. However, we observe additional peaks with relatively small intensities, which can not be assigned as first-order Raman spectra¹⁶. In Fig. 1(a), we denote the weak Raman spectra as ω_i ($i = 1, 2, \dots, 6$).

Since the second-order Raman spectra are dispersive as a function of excitation energy⁵², we performed Raman spectroscopy measurements using different excitation laser energies. In Fig. 1(b) we show Raman spectra of monolayer MoTe₂ under 2.33 eV (532 nm), 1.96 eV (633 nm) and 1.58 eV (785 nm) laser excitation energies. Here the Raman intensities are normalized using the non-resonant Si peak intensity at 520 cm^{-1} (not shown in Fig. 1(b)). We find that the peak positions of each ω_i either upshift or downshift by up to several cm^{-1} for different laser excitation energies, suggesting that these peaks are associated with a second-order Raman process⁵².

Considering that the second-order process is usually connected to the electronic properties by double resonance Raman theory⁵², we calculate the electronic band structure, the density of states (DOS) and the optical absorption spectra of monolayer MoTe₂ as shown in Fig. 2. Our calculated energy dispersion reproduces the main observed features^{11,32,55} such as the direct electronic band gap (1.00 eV) and the spin-orbit splitting of the valence band (~ 230 meV) at the K point which are close to 1.10 eV and 250 meV, respectively, obtained from the optical absorption measurements¹¹. It is noted that the energy band gap is underestimated by the local density functional method. In order to fit the experimental data, the conduction bands are upshifted by 0.10 eV, so are the DOS and optical absorption spectrum. In

Fig. 2(a), we show the calculated electronic energy band and DOS. From the parabolic bands around the K point, two-dimensional (2D) DOS gives constant values, while at the M point we have found saddle points of the energy dispersion in the electronic band, the corresponding DOS gives logarithmic $\log|E - E_0|$ divergence as is known as Van Hove Singularity (VHS) in 2D systems.

In Fig. 2(b), we show the calculated real (ϵ') and imaginary (ϵ'') parts of the dielectric constant and the optical absorption coefficient α as a function of photon energy. ϵ'' has a nonzero value from the photon energy $E_\gamma = 1.10$ eV which corresponds to the energy gap, and a peak at $E_\gamma \sim 1.80$ eV. A strong optical absorption at around 1.83 eV from our calculation agrees well with the large peak at around 1.83 eV from the optical absorption measurement by Ruppert et al.¹¹ on monolayer MoTe₂. Moreover, the electronic excitation energy of 2.30 eV (2.07 eV) from the third (top) valence band to the lowest (third lowest) conduction band at the M point matches very well with the laser energy 2.33 eV (1.96 eV) used in our experiment, as indicated by pink (orange) arrows in the band structure of Fig. 2(a). Thus resonant optical absorption at these laser lines is expected.

In Fig. 2(c), we plot equi-energy contour for the conduction band energies E_{band} which correspond to the laser excitation energies E_γ . $E_{band} = 1.52$ and 1.57 eV for c1 and 1.72 eV for c2 correspond to the $E_\gamma = 1.58$, 2.33 and 1.96 eV, respectively, as indicated by blue, pink, and orange arrows in Fig. 2(a). The conduction bands c1, c2 and the valence bands which have the same spin^{6,54} are highlighted in red solid lines in the band structure. The equi-energy contour lines E_{band}^{c1} and E_{band}^{c2} in Fig. 2(c) both show the saddle point shape of the energy dispersion in the vicinity of the M point. That is, the energy band E_{band}^{c1} (E_{band}^{c2}) starting from the M point monotonically decreases (increases) along the M-K direction, whereas this band energy increases (decreases) along the M- Γ di-

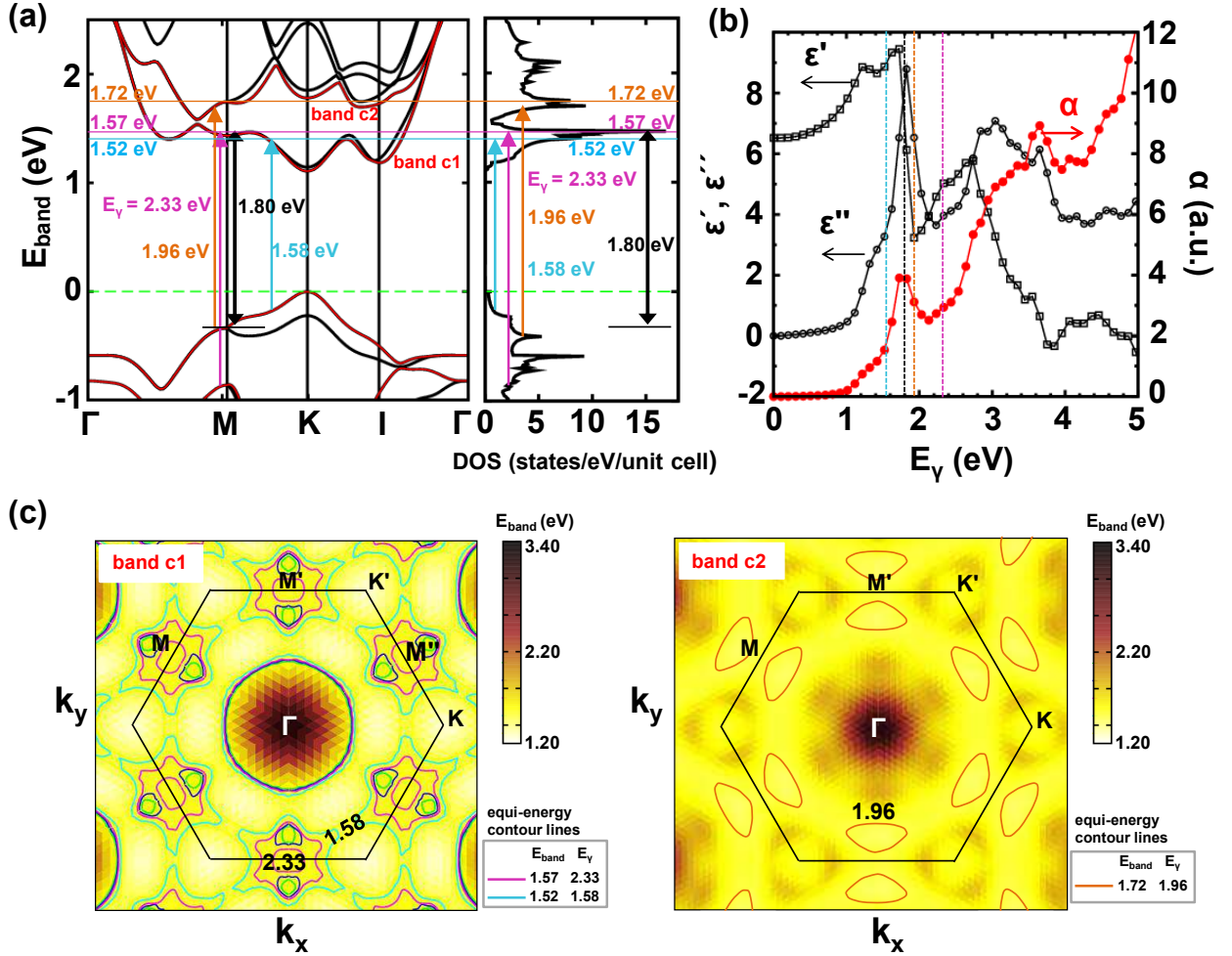


Figure 2: (Color online) (a) Electronic energy band structure $E(k)$ and the density of states (DOS), (b) the real (ϵ'), and imaginary (ϵ'') parts of the dielectric function and the optical absorption coefficient α as a function of photon energy E_γ , and (c) an equi-energy contour plot of the two conduction bands (c1 and c2) with the same spin for monolayer MoTe₂. Energy bands are split by spin-orbit interaction, the conduction bands c1, c2 and the valence bands which have the same spin^{6,54} are highlighted in red solid lines in (a). When we consider energy separation between two Van-Hove singularities (VHS) of the DOS, the peak at 1.80 eV in the absorption spectrum corresponds to optical transition at the M point (black double headed arrow in (a)). (c) The equi-energy contour plot for VHS $E_{band}^1 = 1.52$ and 1.57 eV (left) and $E_{band}^2 = 1.72$ eV (right). All equi-energy contours appear around the M point. The E_{band} energies of 1.52, 1.57 and 1.72 eV (horizontal lines in (a)) correspond to the experimental laser energies (1.58, 2.33 and 1.96 eV) in blue, pink and orange colors.

rection. When we decrease laser excitation energies from 2.33 to 1.58 eV, the contour lines in Fig. 2(c) left change the shapes around the M point, suggesting that the area inside of the contour line for each M point decreases with increasing laser excitation energy. This situation is opposite to the case of graphene in which the equi-energy contour is almost circular and the area increases with increasing energy.

If the laser excitation energy matches the optical transition energy at the M point, we expect that many photo-excited electrons at the M point are scattered to the inequivalent M' or M'' points by an inter-valley resonant electron-phonon interaction, as shown in Fig. 3(a). The inter-valley electron-phonon process, together with the electron-photon process, gives rise to a double resonance

Raman process. Selecting one process from three possible inter-valley scattering of photo-excited carriers ($M \leftrightarrow M'$ or $M \leftrightarrow M''$ or $M' \leftrightarrow M''$), we show the schematic view of the double resonance process in Fig. 3(b). In Fig. 3(b), a photo-excited electron will be scattered from M to M' by emitting a phonon with energy $\hbar\omega_{p1}$ and momentum $-\vec{q}$, which conserves the energy and momentum of both the electron and the phonon. Then the electron is scattered back to M by emitting the second phonon with energy $\hbar\omega_{p2}$ and momentum $+\vec{q}$. As analyzed in the Fig. 3(a), the momentum \vec{q} of the phonon can only have a magnitude of $|\overline{MM'}|$ or $|\overline{MM''}|$ or $|\overline{M'M''}|$. When we measure the value of $|\vec{q}|$ from the Γ point, the \vec{q} corresponds to $\overline{\Gamma M''}$ or $\overline{\Gamma KM'}$ or $\overline{\Gamma M}$, respectively. Since $\overline{\Gamma KM'} =$

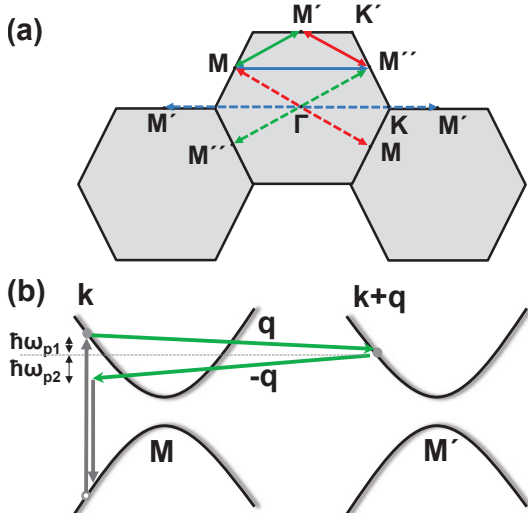


Figure 3: (Color online) (a) In the double-resonance process, photon-excited electrons are scattered inelastically by emitting phonons and make inter-valley (i.e., $M \leftrightarrow M'$, $M' \leftrightarrow M''$, and $M \leftrightarrow M''$) transitions, as shown by the solid double-end arrows in the first BZ. The related phonon vectors \vec{q} measured from the Γ point are also given by the six dashed arrows. (b) The schematics of the double resonance process (electron-photon and electron-phonon processes). This process generates two phonons ($\hbar\omega_{p1}$, $-\vec{q}$) and ($\hbar\omega_{p2}$, \vec{q}).

$\vec{\Gamma M'} + \vec{\Gamma \Gamma} \equiv \vec{\Gamma M'}$, all phonon modes related to double resonance process correspond to phonon modes at the M point.

In order to specify the phonons contributing to the second-order Raman process, we analyzed possible inter-valley phonon vectors $\vec{q}_{MM'}$ for the three laser energies and calculated the phonon spectra of monolayer MoTe₂, as shown in Fig. 4. For the laser with an energy of 2.33 eV, we analyze possible $\vec{q}_{MM'}$ wave vectors between two elliptical equi-energy contour lines (red lines) in the left panel of Fig. 4(a). The dark area for $\vec{q}_{MM'}$ shows that the most probable phonon vectors appear at the M point. Other phonon vectors, such as $\vec{q}_{M'M''}$ and $\vec{q}_{MM''}$, are similar to $\vec{q}_{MM'}$ (not shown). For the 1.96 and 1.58 eV excitation lasers, as already seen in Fig. 2(c), the equi-energy contours have a larger area than that for 2.33 eV. Then we expect that $\vec{q}_{MM'}$ for $E_\gamma = 1.96$ and 1.58 eV arises from the vicinity of the Brillouin zone near the M point, as shown in the central and right panels of Fig. 4(a). The relatively dark region indicates that: (1) the $\vec{q}_{MM'}$ for $E_\gamma = 1.96$ eV appear both at the M point and in the vicinity of the M point (approximately with lengths of $\frac{1}{3}\overline{MK}$) along the MK direction and (2) the $\vec{q}_{MM'}$ for $E_\gamma = 1.58$ eV appear in the vicinity of the M point along the $M'M''$ (or MM'') direction approximately with lengths of $10\%M'M''$ (or $6.5\%MM''$) away from the M'' point.

In Fig. 4(b), we show the calculated phonon dispersion relations of monolayer MoTe₂. The symmetry for each optical phonon band⁵³, such as E_{2g}^1 and E_{1g} , is labeled in Fig. 4(b). Here LA, TA and ZA refer to the longitudinal,

transverse and out-of-plane acoustic modes, respectively. We assign the second-order Raman modes at the M point for the laser energy of 2.33 eV. The strategy for the assignment is to choose any two phonon modes at the M point as one overtone or (difference) combination mode and to list in Table I those that have frequency values within the experimental $\omega_i \pm 6 \text{ cm}^{-1}$. These assignments are marked in Fig. 4(b) by using color arrows. The red, green, blue, purple, magenta, and cyan arrows represent overtone or combination Raman modes of ω_i ($i = 1, 2, \dots, 6$), respectively. Downward arrows with an "−" superscript represent a two-phonon process with one phonon annihilated and one phonon created to generate "difference combination mode", while upward arrows with the "+" or "2" superscripts are used for combination or overtone modes in which two phonons are created. For example, ω_1 is assigned to either the $\omega_1^- (= E_{2g}^1(M) - LA(M))$ or $\omega_1^2 (= 2TA(M))$, ω_2 to $\omega_2^- (= E_{2g}^1(M) - TA(M))$, ω_3 to either $\omega_3^2 (= 2LA(M))$ or $\omega_3^+ (= E_{1g}(M) + TA(M))$, ω_4 to $\omega_4^+ (= A_{1g}(M) + LA(M))$, ω_5 to either the $\omega_5^2 (= 2A_{1g}(M))$ or $\omega_5^+ (= E_{2g}^1(M) + TA(M))$ and ω_6 to the $\omega_6^+ (= E_{2g}^1(M) + LA(M))$ mode. Using the same phonon assignment, we obtain the second-order Raman frequencies for $E_\gamma = 1.96$ eV both at the M point and near the M point with a length of $\frac{1}{3}\overline{MK}$ and for 1.58 eV at one point away from the M point with $10\%M'M''$.

In Table I, we list phonon frequencies of the first-order (upper) and the second-order (lower) Raman spectra for both the experiment and the calculation and also the phonon assignments. The first-order experimental Raman spectra (A_{1g} and E_{2g}^1) do not change the frequency for the laser energies (2.33 and 1.96 eV) within the experimental error (1 cm^{-1}) and agree with the calculations. The small frequency downshift of the first order spectra (1.7 cm^{-1} at most) from 2.33 eV to 1.58 eV laser excitation is checked to be not from the laser-induced thermal effect as discussed in the Supplemental Material. Although we did not specify the origin of the downshift precisely, the origin of the change for the first order can be neglected for simplicity. The experimental second-order peak positions of ω_i are either upshifted or downshifted with the laser energy E_γ by a small magnitude of about $1-3 \text{ cm}^{-1}$. It is pointed out that the frequency of ω_1 is upshifted from 2.33 eV to 1.58 eV even though the both the first-order spectra are downshifted. This can be understood by double resonance Raman theory in which the resonance phonon frequency changes along the phonon dispersion near the M point. In the right of Table I, the second-order phonon frequencies for 2.33 and 1.58 eV laser excitations are obtained at $\vec{q}_{MM'} = \vec{\Gamma M}$ (at M) and $\sim 10\%MM'$ (denoted by "off M"), respectively. For $E_\gamma = 1.96$ eV, the phonon assignments are obtained either at $\vec{q}_{MM'} = \vec{\Gamma M}$ (at M) or $\sim \frac{1}{3}\overline{MK}$ (off M).

These assignments can be further confirmed by the observed relative Raman intensity and the phonon dispersion relation. First, in Fig. 1(b), a larger relative intensity of Raman spectra ω_i can be found at $E_\gamma = 2.33$ eV than

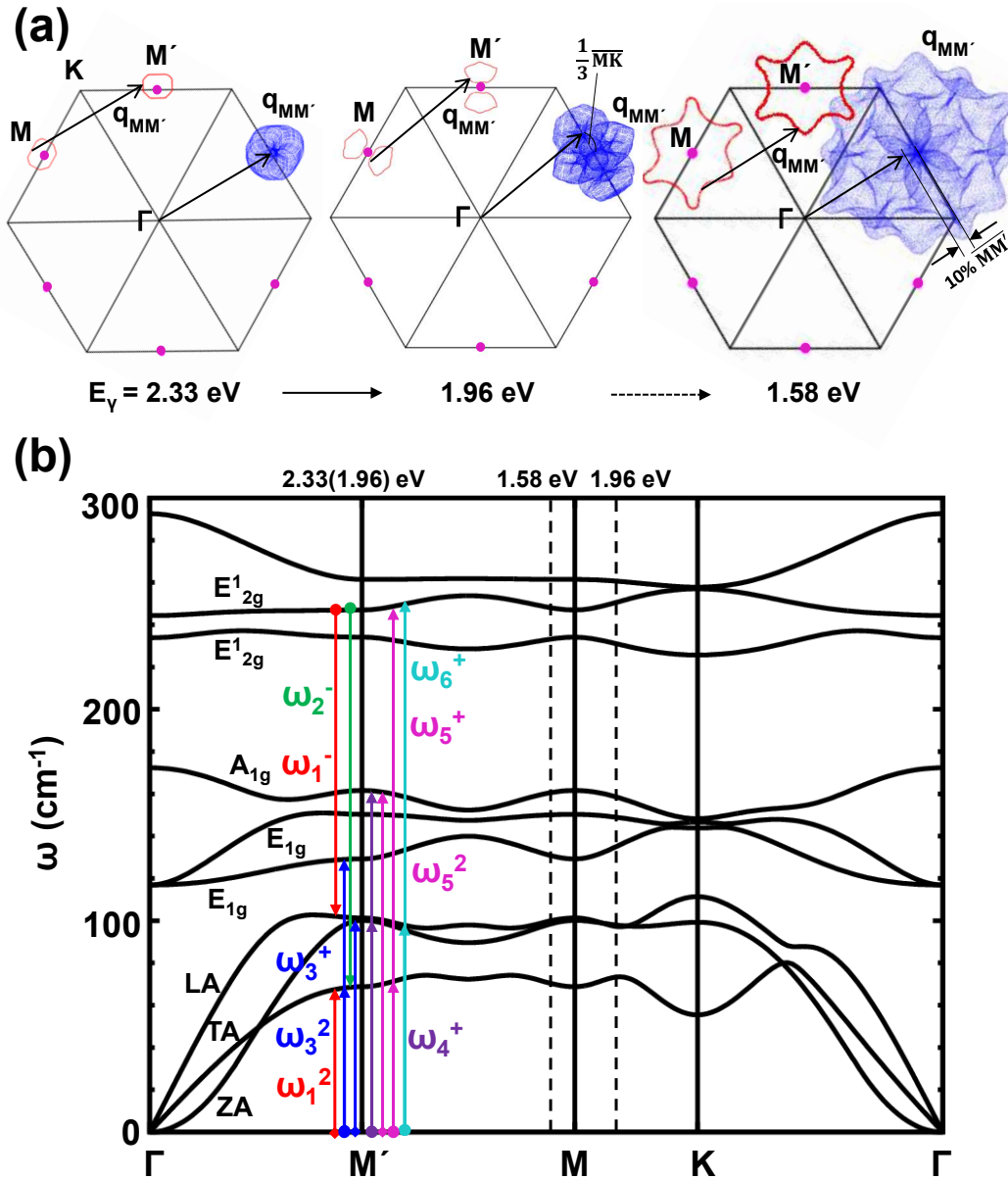


Figure 4: (Color online) (a) All possible phonon vectors $q_{MM'}$ coming from the double resonance Raman process due to the laser energies of 2.33, 1.96 and 1.58 eV. The $\vec{q}_{MM'}$ is equal to either $\Gamma\bar{M}$ (for the laser energy $E_\gamma = 2.33$ and 1.96 eV) or $\sim \frac{1}{3}\overline{MK}$ (for $E_\gamma = 1.96$ eV) or $\sim 10\%\overline{MM'}$ (for $E_\gamma = 1.58$ eV), as indicated by an arrow away from the Γ point. (b) The phonon dispersion relations of a monolayer MoTe₂. The second-order phonon modes are analyzed at the M' point for the laser energy $E_\gamma = 2.33$ eV, and then at two k points marked by two vertical dashed lines which are shifted leftward and rightward from the M point for the laser energy $E_\gamma = 1.58$ eV and 1.96 eV, respectively. The red, green, blue, purple, magenta, and cyan vertical arrows are used for modes $\omega_1, \omega_2, \omega_3, \omega_4, \omega_5$, and ω_6 , respectively. The superscripts "+", "-", and "2" for ω refer to possible "combination modes" (i.e. $\omega_4^+ = A_{1g}(M) + LA(M)$, $\omega_6^+ = E_{2g}^1(M) + LA(M)$), "difference modes" (i.e. $\omega_1^- = E_{2g}^1(M) - LA(M)$, $\omega_2^- = E_{2g}^1(M) - TA(M)$) and "overtones" (i.e. $\omega_1^2 = 2TA(M)$, $\omega_3^2 = 2LA(M)$), respectively.

at 1.58 eV. This supports the assignments at the M point and at $\vec{q}_{MM'} \sim 10\%\overline{MM'}$ for $E_\gamma = 2.33$ eV and 1.58 eV, respectively, since phonon density of states (PhDOS) at the M point is larger than that at $\vec{q}_{MM'} \sim 10\%\overline{MM'}$ as shown in Fig. 4(b). Similarly, for $E_\gamma = 1.96$ eV, a relatively large (small) intensity of the Raman spectra ω_2, ω_3 and ω_6 (ω_1, ω_4 and ω_5) in Fig. 1(b) may arise from the

large (small) PhDOS at the M point (off the M point). It is therefore reasonable to assign the ω_2, ω_3 and ω_6 (ω_1, ω_4 and ω_5) at the M point (off the M point), as underlined in Table I. Second, it is noted that the experimental spectra of ω_4 (at the three laser energies) are too weak to determine the frequency values. The ω_4 is assigned as a combination mode related to the $A_{1g}(M)$ as listed

Table I: Phonon frequencies of the first- and second-order Raman spectra of monolayer MoTe₂ are listed for three different laser energies E_γ . A comparison for first and second-order Raman spectra is given between the experimentally unassigned modes ω_i ($i = 1, 2, \dots, 6$) and the calculated phonon frequencies both at the M point and near the M point denoted by (off M) whose \vec{q} lies around $\frac{1}{3}\overline{MK}$ and $10\%\overline{MM'}$ for $E_\gamma = 1.96$ eV and 1.58 eV, respectively. The consistent dispersion behavior for the second-order Raman spectra between the experiment and the theory are underlined. The frequency is given in units of cm^{-1} . NA: not available.

	Experiment			Calculation			Phonon assignments
	2.33 eV	1.96 eV	1.58 eV	2.33 eV	1.96 eV	1.58 eV	
E_{1g}	NA	NA	NA	116.9			first-order
A_{1g}	171.1	171.3	170.0	172.2			first-order
E_{2g}^1	235.8	236.2	234.1	236.9			first-order
				(at M)	(at M/off M)	(off M)	
ω_1	138.2	140.7	139.0	<u>137.4</u> <u>132.8</u>	137.4/ <u>146.6</u> 132.8/ <u>133.1</u>	<u>140.1</u> <u>133.2</u>	<u>2TA(M)</u> or <u>$E_{2g}^1(M)$-LA(M)</u>
ω_2	183.7	183.6	181.5	<u>178.3</u>	<u>178.3</u> / <u>177.2</u>	<u>177.8</u>	<u>$E_{2g}^1(M)$-TA(M)</u>
ω_3	205.5	205.3	205.9	<u>197.9</u> <u>202.7</u>	<u>197.9</u> / <u>208.2</u> <u>202.7</u> / <u>196.0</u>	<u>200.5</u> <u>200.4</u>	<u>$E_{1g}(M)$+TA(M)</u> or <u>2LA(M)</u>
ω_4	~ 264.0	260-270	260-270	<u>263.0</u>	263.0/ <u>256.6</u>	<u>261.0</u>	<u>$A_{1g}(M)$ + LA(M)</u>
ω_5	329.0	333.2	~ 328.0	<u>323.3</u> <u>315.7</u>	323.3/ <u>317.2</u> 315.7/ <u>323.8</u>	<u>321.6</u> <u>317.9</u>	<u>2A_{1g}(M)</u> or <u>$E_{2g}^1(M)$+TA(M)</u>
ω_6	347.4	348.4	346.5	<u>348.3</u>	<u>348.3</u> / <u>348.5</u>	<u>348.0</u>	<u>$E_{2g}^1(M)$+LA(M)</u>

in Table I. Then it is interesting to discuss why the ω_4 becomes weaker and broader when the first-order $A_{1g}(\Gamma)$ mode becomes stronger by changing the laser excitation energy from 2.33 eV to 1.96 eV/1.58 eV. We expect that the photo-excited electron may choose either an intra-valley scattering process ($A_{1g}(\Gamma)$) or an inter-valley scattering process ($A_{1g}(M)$), so that $A_{1g}(M)$ competes with $A_{1g}(\Gamma)$, resulting in the alternative Raman intensity of $A_{1g}(\Gamma)$ and ω_4 in the experiment. The ω_4 ($A_{1g}(M)$) has no VHS of PhDOS compared with all the other ω 's at the M point as seen from Fig. 4(b) which is relevant to the weak intensity of ω_4 , too.

In Fig. 5, we show the normal modes of the phonons at the M point in which the phonon vibration amplitude is visualized in the 2×2 supercell. As seen from Fig. 4(b), the two groups of optical phonon modes (E_{2g}^1 and (E_{1g} or A_{1g})) are well separated by about 50 cm^{-1} . The visualization of these M point phonon modes shows that the LO and TO $E_{2g}(M)$ modes ($230 \sim 300 \text{ cm}^{-1}$) and the LA(M) and TA(M) modes ($60 \sim 100 \text{ cm}^{-1}$) are bond-stretching modes of the Mo-Te bond. The LO $A_{1g}(M)$ and TO $E_{1g}(M)$ modes ($120 \sim 180 \text{ cm}^{-1}$) arises from the relative motion of two Te atoms occupying the same sublattice. The six vibrational modes in Fig. 5 are Raman active, since the volume or the area of the supercell under vibration gives non-zero deformation potential. Thus all the modes can contribute to the 2nd-order overtone, combination and difference modes. Furthermore, the vibrational magnitude of the TA modes is no less than that

of the LA modes, suggesting that the TA modes may induce as large deformation potential as the LA modes in the electron-phonon interaction. Usually, the TA modes around the Γ point do not contribute to the electron-phonon interaction. Nevertheless, this seems not to be the case at the M point.

So far we have only considered the electron-involved double resonance process for MoTe₂ and did not discuss the hole-involved double resonance process. As Venezuela et al.⁵⁶ pointed out, the enhancement by the double resonance is strong in graphene for one-electron and one-hole scattering, since the energy denominators of the Raman intensity formula becomes zero for the symmetric π and π^* bands of graphene (triple resonance). In the case of TMDs, however, a similar effect is not expected since the conduction band and the valence band are not symmetric around the Fermi energy⁵⁴. Since we don't have a program to calculate electron-phonon matrix element by first-principles calculations, we can't calculate Raman intensity for each double resonance process,⁵⁶ which will be a future work.

Finally, we briefly comment on the exciton effect on the double resonance Raman spectra of MoTe₂. Since the excitonic states appear at the direct energy gap at the K point of the BZ^{57,58}, we expect that the excitonic energy is around 1.1 eV for MoTe₂, which is much smaller than the three laser energies we used (1.58 - 2.33 eV). As far as we consider only MoTe₂, we can safely neglect the exciton effect at the K point. However, in the case of other TMDs

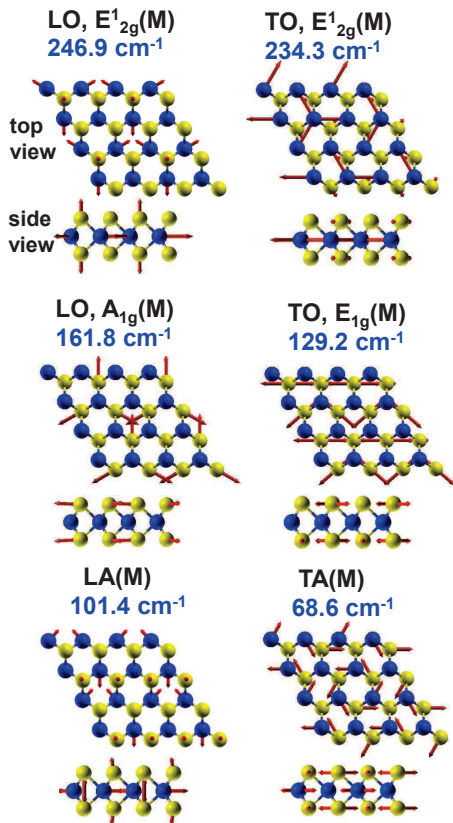


Figure 5: (Color online) Visualization of the possible Raman-active modes at the M point for the second-order process suggested in Figure 4. Both the top and side views are given and red arrows represent the vibrational directions and amplitudes of the motion of individual atoms.

Table II: Laser energies that are used in the Raman spectra of TMDs. $E_g(K)$, $E_g(M)$ are, respectively, the optical transition energies at the K and M point, which are obtained by LDA calculations. Detail is discussed in the text.

TMDs	laser(eV)	$E_g(K)$	$E_g(M)$
MoS ₂ ^{18,26}	1.83-2.41	1.7	>3.0
WS ₂ ^{27,28,41}	1.83-2.41	1.9	>3.0
WSe ₂ ^{36,37}	2.41	1.7	>3.0
MoTe ₂ ^{this work}	1.96, 2.33	1.1	~1.8

(MoS₂²⁶, WS₂^{27,28,41,59}, WSe₂^{36,37}) energy gaps at the K point ($E_g(K)$) lie in the range of 1.7-1.9 eV as shown in Table II. The laser energies used in the experiments lie in a range from 1.83 to 2.41 eV. Thus the exciton effect needs to be considered for some laser energies. Neverthe-

less, when we discuss the M-point phonon of the other TMDs, we expect that the second-order Raman spectra do not appear, since the optical transition energies at the M point is larger than 3.0 eV. It would be interesting if ultra-violet laser could be used for detecting the M-point phonon modes for other TMDs, which will be a future work. In the case of MoTe₂, on the other hand, since $E_g(M) \sim 1.8$ eV, we expect the double resonance Raman process for conventional laser energies. Although we did not consider the exciton effect at the M point explicitly as K.F. Mak *et al.*⁶⁰ did in graphene, we believe that the present discussion of the double resonance Raman effect should work well, because only optical transition matrix elements that are common in the resonant Raman process are enhanced by the exciton effect, and the relative Raman intensity thus obtained do not change much for the M point.^{61,62}

V. CONCLUSION

In summary, we have investigated the second-order Raman spectra of MoTe₂ systems, based on an *ab initio* density functional calculation, and compared with the experimental Raman spectroscopy. The calculated electronic bands, the Van Hove singularities in the density of states, and the absorption spectra indicate a strong optical absorption at the M point in the BZ of MoTe₂. Using double resonance Raman theory, combination/difference or overtone mode of phonons at the M point are assigned to identify the experimental Raman modes of ω_i ($i = 1, 2, \dots, 6$). This study facilitates a better understanding of the electron-phonon interaction and the second-order Raman process in TMD systems.

Acknowledgments

M.Y. and K.T. sincerely acknowledge Prof. Meiyang Ni and Dr. Katsunori Wakabayashi for critical suggestions on experiments. T.Y. and Z.D.Z. acknowledge the NSFC under Grant Nos. 11004201, 51331006 and the IMR SYNL-Young Merit Scholars for financial support. R.S. acknowledges MEXT Grants Nos. 25286005 and 25107005. M.S.D. acknowledges NSF-DMR Grant No. 10-04147. K.U. and K.T. acknowledge MEXT Grant No. 25107004. Calculations were performed in the HPC cluster at the Institute of Metal Research in Shenyang, China.

* Electronic address: hhguo@alum.imr.ac.cn

† Electronic address: yangteng@imr.ac.cn

¹ B. Radisavljevic, A. Radenovic, J. Brivio, V. Giacometti, and A. Kis, Nat. Nanotechnol. **6**, 147 (2011).

² Q. H. Wang, K. Kalantar-Zadeh, A. Kis, J. N. Coleman, and M. S. Strano, Nat. Nanotechnol. **7**, 699 (2012).

³ O. Lopez-Sanchez, D. Lembke, M. Kayci, A. Radenovic, and A. Kis, Nat. Nanotechnol. **8**, 497 (2013).

- ⁴ Y.-F. Lin, Y. Xu, S.-T. Wang, S.-L. Li, M. Yamamoto, A. Aparecido-Ferreira, W. Li, H. Sun, S. Nakaharai, W.-B. Jian, et al., *Adv. Mater.* **26**, 3263 (2014).
- ⁵ N. R. Pradhan, D. Rhodes, S. Feng, Y. Xin, S. Memaran, B.-H. Moon, H. Terrones, M. Terrones, and L. Balicas, *ACS Nano* **8**, 5911 (2014).
- ⁶ D. Xiao, G.-B. Liu, W. Feng, X. Xu, and W. Yao, *Phys. Rev. Lett.* **108**, 196802 (2012).
- ⁷ T. Cao, G. Wang, W. P. Han, H. Q. Ye, C. R. Zhu, J. R. Shi, Q. Niu, P. H. Tan, E. G. Wang, B. L. Liu, et al., *Nat. Commun.* **3**, 887 (2012).
- ⁸ M. B. Vellinga, R. de Jonge, and C. Haas, *J. Solid State Chem.* **2**, 299 (1970).
- ⁹ K.-A. N. Duerloo, Y. Li, and E. J. Reed, *Nat. Commun.* **5**, 5214 (2014).
- ¹⁰ B. G. Streetman and B. Sanjay, *Solid State electronic Devices (5th ed.)* (New Jersey: Prentice Hall, 2000).
- ¹¹ C. Ruppert, O. B. Aslan, and T. F. Heinz, *Nano Lett.* **14**, 6231 (2014).
- ¹² J. A. Wilson and A. D. Yoffe, *Adv. Phys.* **18**, 193 (1969).
- ¹³ C. Lee, H. Yan, L. E. Brus, T. F. Heinz, J. Hone, and S. Ryu, *ACS Nano* **4**, 2695 (2010).
- ¹⁴ H. Sahin, S. Tongay, S. Horzum, W. Fan, J. Zhou, J. Li, J. Wu, and F. M. Peeters, *Phys. Rev. B* **87**, 165409 (2013).
- ¹⁵ H. Li, Q. Zhang, C. C. R. Yap, B. K. Tay, T. H. T. Edwin, A. Olivier, and D. Baillargeat, *Adv. Funct. Mater.* **22**, 1385 (2012).
- ¹⁶ M. Yamamoto, S.-T. Wang, M.-Y. Ni, Y.-F. Lin, S.-L. Li, S. Aikawa, W.-B. Jian, K. Ueno, K. Wakabayashi, and K. Tsukagoshi, *ACS Nano* **8**, 3895 (2014).
- ¹⁷ T. J. Wieting and J. L. Verble, *Phys. Rev. B* **3**, 4286 (1971).
- ¹⁸ J. M. Chen and C. S. Wang, *Solid State Commun.* **14**, 857 (1974).
- ¹⁹ N. Wakabayashi, H. G. Smith, and R. M. Nicklow, *Phys. Rev. B* **12**, 659 (1975).
- ²⁰ D. G. Mead and J. C. Irwin, *Can. J. Phys.* **55**, 379 (1977).
- ²¹ A. R. Beal and H. P. Hughes, *J. Phys. C: Solid State Phys.* **12**, 881 (1979).
- ²² T. Sekine, M. Izumi, T. Nakashizu, K. Uchinokura, and E. Matsuura, *J. Phys. Soc. Jpn.* **49**, 1069 (1980).
- ²³ T. Sekine, T. Nakashizu, K. Toyoda, K. Uchinokura, and E. Matsuura, *Solid State Commun.* **35**, 371 (1980).
- ²⁴ S. Sugai, T. Ueda, and K. Murase, *Journal de Physique* **42**, 320 (1981).
- ²⁵ T. Sekine, K. Uchinokura, T. Nakashizu, E. Matsuura, and R. Yoshizaki, *J. Phys. Soc. Jpn.* **53**, 811 (1984).
- ²⁶ A. M. Stacy and D. T. Hodul, *J. Phys. Chem. Sol.* **46**, 405 (1985).
- ²⁷ C. Sourisseau, M. Fouassier, M. Alba, A. Ghorayeb, and O. Gorochov, *Mater. Sci. Eng.: B3* pp. 119–123 (1989).
- ²⁸ C. Sourisseau, F. Cruège, M. Fouassier, and M. Alba, *Chem. Phys.* **150**, 281 (1991).
- ²⁹ G. L. Frey, R. Tenne, M. J. Matthews, M. S. Dresselhaus, and G. Dresselhaus, *Phys. Rev. B* **60**, 2883 (1999).
- ³⁰ S. Sugai and T. Ueda, *Phys. Rev. B* **26**, 6554 (1982).
- ³¹ A. Molina-Sánchez and L. Wirtz, *Phys. Rev. B* **84**, 155413 (2011).
- ³² Y. Ding, Y. L. Wang, J. Ni, L. Shi, S. Q. Shi, and W. H. Tang, *Physica B: Condensed Matter* **406**, 2254 (2011).
- ³³ X. Luo, Y. Y. Zhao, J. Zhang, M. L. Toh, C. Kloc, Q. H. Xiong, and S. Y. Quek, *Phys. Rev. B* **88**, 195313 (2013).
- ³⁴ X. Luo, Y. Y. Zhao, J. Zhang, Q. H. Xiong, and S. Y. Quek, *Phys. Rev. B* **88**, 075320 (2013).
- ³⁵ B. Chakraborty, A. Bera, D. V. S. Muthu, S. Bhowmick, U. V. Waghmare, and A. K. Sood, *Phys. Rev. B* **85**, 161403(R) (2012).
- ³⁶ W. J. Zhao, Z. Ghorannevis, K. K. Amara, J. R. Pang, M. L. Toh, X. Zhang, C. Kloc, P. H. Tan, and G. Eda, *Nanoscale* **5**, 9677 (2013).
- ³⁷ H. Terrones, E. Del Corro, S. Feng, J. M. Poumirol, D. Rhodes, D. Smirnov, N. R. Pradhan, Z. Lin, M. A. Nguyen, A. L. Elías, et al., *Sci. Rep.* **4**, 4215 (2014).
- ³⁸ Y. Feldman, G. L. Frey, M. Homyonfer, V. Lyakhovitskaya, L. Margulis, H. Cohen, G. Hodes, J. L. Hutchison, and R. Tenne, *J. Am. Chem. Soc.* **118**, 5362 (1996).
- ³⁹ B. C. Windom, W. Sawyer, and D. W. Hahn, *Tribol. Lett.* **42**, 301 (2011).
- ⁴⁰ B. Chakraborty, H. S. S. R. Matte, A. K. Sood, and C. N. R. Rao, *J. Raman Spectrosc.* **44**, 92 (2013).
- ⁴¹ A. Berkdemir, H. R. Gutiérrez, A. R. Botello-Méndez, N. Perea-López, A. L. Elías, C.-I. Chia, B. Wang, V. H. Crespi, F. López-Urías, J.-C. Charlier, et al., *Sci. Rep.* **3**, 1755 (2013).
- ⁴² P. Giannozzi, S. Baroni, N. Bonini, M. Calandra, R. Car, C. Cavazzoni, D. Ceresoli, G. L. Chiarotti, M. Cococcioni, I. Dabo, et al., *J. Phys.: Condens. Matter* **21**, 395502 (2009), URL <http://www.quantum-espresso.org>.
- ⁴³ P. Tao, H. Guo, T. Yang, and Z. Zhang, *Chin. Phys. B* **23**, 106801 (2014).
- ⁴⁴ P. E. Blöchl, *Phys. Rev. B* **50**, 17953 (1994).
- ⁴⁵ D. Puotinen and R. E. Newnham, *Acta Crystallogr.* **14**, 691 (1961).
- ⁴⁶ J. Kang, S. Tongay, J. Zhou, J. Li, and J. Wu, *Appl. Phys. Lett.* **102**, 012111 (2013).
- ⁴⁷ H. J. Monkhorst and J. D. Pack, *Phys. Rev. B* **13**, 5188 (1976).
- ⁴⁸ S. Baroni, S. de Gironcoli, A. Dal Corso, and P. Giannozzi, *Rev. Mod. Phys.* **73**, 515 (2001).
- ⁴⁹ M. Gajdoš, K. Hummer, G. Kresse, J. Furthmüller, and F. Bechstedt, *Phys. Rev. B* **73**, 045112 (2006).
- ⁵⁰ H. Zimmermann, *Integrated Silicon Optoelectronics*, Springer Series in Optical Sciences (Springer, 2000).
- ⁵¹ R. M. A. Lieth, *Preparation and Crystal Growth of Materials with Layered Structures* (Springer: Berlin, 1977).
- ⁵² R. Saito, A. Jorio, A. G. Souza Filho, G. Dresselhaus, M. S. Dresselhaus, and M. A. Pimenta, *Phys. Rev. Lett.* **88**, 027401 (2001).
- ⁵³ The phonon modes E'' , E' and A'_1 of monolayer and related Raman-active modes of few-layer MoTe_2 are labeled as E_{1g} , E_{2g}^1 and A_{1g} of bulk MoTe_2 for discussion convenience.
- ⁵⁴ Z. M. Wang, ed., *MoS₂: Materials, Physics, and Devices*, Lecture Notes in Nanoscale Science and Technology (Springer: Berlin, 2014).
- ⁵⁵ A. Kumar and P. Ahluwalia, *Eur. Phys. J. B* **85**, 186 (2012), ISSN 1434-6028.
- ⁵⁶ P. Venezuela, M. Lazzeri, and F. Mauri, *Phys. Rev. B* **84**, 035433 (2011).
- ⁵⁷ A. Chernikov, T. C. Berkelbach, H. M. Hill, A. Rigosi, Y. Li, O. B. Aslan, D. R. Reichman, M. S. Hybertsen, and T. F. Heinz, *Phys. Rev. Lett.* **113**, 076802 (2014).
- ⁵⁸ Z. Ye, T. Cao, K. O'Brien, H. Zhu, X. Yin, Y. Wang, S. G. Louie, and X. Zhang, *Nature* **513**, 214 (2014).
- ⁵⁹ It is worth pointing out that our assignment of the M point phonon for MoTe_2 is similar to that for WS_2 by Berkdemir et al⁴¹, but in our case is based on a different intervalley

process. Berkdemir et al.⁴¹ used a laser line (514.5 nm) which matches the K point gap of WS₂ and therefore may trigger an intervalley electron-phonon process between the K and I points, both of which have almost the same band energy. Thus Berkdemir's model should be used for WS₂ and our model for MoTe₂.

⁶⁰ K. F. Mak, J. Shan, and T. F. Heinz, Phys. Rev. Lett. **106**, 046401 (2011).

⁶¹ J. Jiang, R. Saito, K. Sato, J. S. Park, G. G. Samsonidze, A. Jorio, G. Dresselhaus, and M. S. Dresselhaus, Phys. Rev. B **75**, 035405 (2007).

⁶² J. Jiang, R. Saito, G. G. Samsonidze, A. Jorio, S. G. Chou, G. Dresselhaus, and M. S. Dresselhaus, Phys. Rev. B **75**, 035407 (2007).