



CHORUS

This is the accepted manuscript made available via CHORUS. The article has been published as:

Accumulation, inversion, and depletion layers in SrTiO₃

K. V. Reich, M. Schechter, and B. I. Shklovskii

Phys. Rev. B **91**, 115303 — Published 6 March 2015

DOI: [10.1103/PhysRevB.91.115303](https://doi.org/10.1103/PhysRevB.91.115303)

Accumulation, inversion and depletion layers in SrTiO₃

K.V. Reich,^{1,2,*} M. Schechter,¹ and B.I. Shklovskii¹

¹*Fine Theoretical Physics Institute, University of Minnesota, Minneapolis, MN 55455, USA*

²*Ioffe Institute, St Petersburg, 194021, Russia*

(Dated: February 17, 2015)

We study potential and electron density depth profiles in accumulation, inversion and depletion layers in crystals with a large and nonlinear dielectric response such as SrTiO₃. We describe the lattice dielectric response using the Landau-Ginzburg free energy expansion. In accumulation and inversion layers we arrive at new nonlinear dependencies of the width d of the electron gas on an applied electric field D_0 . Particularly important is the predicted electron density profile of accumulation layers (including the LaAlO₃/SrTiO₃ interface) $n(x) \propto (x+d)^{-12/7}$, where $d \propto D_0^{-7/5}$. We compare this profile with available data and find satisfactory agreement. For a depletion layer we find an unconventional nonlinear dependence of the capacitance on voltage. We also evaluate the role of spatial dispersion in the dielectric response by adding a gradient term to the Landau-Ginzburg free energy.

I. INTRODUCTION

In recent years, there has been growing interest in the investigation of ABO₃ perovskite crystals, which are important for numerous technological applications and show intriguing magnetic, superconducting, and multi-ferroic properties¹. Special attention^{2,3} is paid to heterostructures involving SrTiO₃ which is a semiconductor with a band gap of $\simeq 3.2$ eV⁴ and a large dielectric constant κ ranging from $2 \cdot 10^4$ at liquid helium temperatures to 350 at room temperature. As with conventional semiconductors, SrTiO₃ can be used as a building block for different types of devices, with reasonably large mobility^{5,6}.

Many devices are based on the accumulation layer of electrons near a heterojunction interface involving SrTiO₃. For example, one can use modulation doping in the structure SrTiO₃/SrZrO₃ to introduce electrons in the conduction band of SrTiO₃ from La donors within the wider-band-gap material SrZrO₃⁷. Inside bulk SrTiO₃ δ -doping can be used to introduce two accumulation layers of electrons⁸⁻¹⁰. One can accumulate an electron gas using a field-effect¹¹⁻¹³ instead of dopants. In Refs. 14 and 15 the authors accumulated up to 10^{14} cm⁻² electrons on the surface of SrTiO₃ using ionic liquid gating. Finally, there is enormous interest^{2,5,6} in LaAlO₃/SrTiO₃ heterojunctions where electrons are accumulated by the electric field resulting from the “polar catastrophe”¹⁶. It is natural to think that the depth profiles of the potential and electron density inside SrTiO₃ have a universal origin in all these devices.

Another type of device based on n -doped SrTiO₃ is the Schottky diode. Due to the built-in Schottky barrier the region near the metal-semiconductor interface in doped SrTiO₃ is depleted. The large and nonlinear dielectric constant results in unconventional capacitance-voltage characteristics. Schottky diodes with different metals and bulk SrTiO₃ dopants have been studied: Au/Nb : SrTiO₃¹⁷, Ba_{1-x}K_xBiO₃/Nb : SrTiO₃¹⁸, SrRuO₃/Nb : SrTiO₃¹⁹, Au/SrTiO_{3-x}²⁰.

All of the devices cited above are based on accumulation and depletion layers. We do not know of any attempts to create a hole inversion layer in n -type SrTiO₃ or an electron inversion layer in p -type SrTiO₃ but they are likely to be of interest as well.

Interface properties determine characteristics of all these devices. Not surprisingly, the potential and electron density depth profiles in such devices have attracted attention from the experimental²¹⁻²⁴ and theoretical points of view^{14,25-29}. For example, experimental data show that electrons are distributed in a layer of width $\simeq 5 - 10$ nm near the LaAlO₃/SrTiO₃ interface. Theoretical works that attempt to explain such behavior are based on microscopic numerical calculations.

The goal of this paper is to create a simple, mostly phenomenological and analytical approach for describing the potential and the electron density depth profiles in SrTiO₃. To account for the nonlinear dielectric response in SrTiO₃ we use the Landau-Ginzburg free energy expansion^{30,31}. Electrons are almost everywhere described in the Thomas-Fermi approximation³². Although we mostly concentrate on SrTiO₃, the developed approach is applicable to KTaO₃³³ and CaTiO₃³⁴ as well.

Our main result is a new form for the potential and electron density depth profiles in accumulation, inversion and depletion layers due to the nonlinear dielectric response. In particular, for an accumulation layer in SrTiO₃, we find an electron concentration $n(x)$ that depends on the distance from the surface x as $n(x) \propto (x+d)^{-12/7}$, where the width d decreases with the external electric field D_0 as $d \propto D_0^{-7/5}$. These relations seem to agree with experimental data^{22,23}.

The remainder of this paper is organized as follows. In Sec. II we define the model based on the Landau-Ginzburg theory for calculating the lattice dielectric response and describe the parameters of SrTiO₃. In Sec. III we use the Thomas-Fermi approach for calculating the self-consistent electric field to describe properties of electron accumulation layers. In the Sec. IV we apply our theory to the consideration of interfaces between SrTiO₃

and polar dielectrics. In particular, we pay attention to the case of an accumulation layer on the interface of $\text{LaAlO}_3/\text{SrTiO}_3$ and compare our theory with experimental data. In Sec. V we calculate the quantum capacitance of the accumulation layer in SrTiO_3 . In Sec. VI we use a one sub-band approximation, in which electrons do not affect the electric field, to calculate properties of inversion layers. In Sec. VII we consider a depletion layer in SrTiO_3 , calculate the capacitance-voltage characteristics of a Schottky barrier for such systems, and compare our results with experimental data. In Sec. VIII we show that our results are not modified by the presence of spatial dispersion in the dielectric response. Sec. IX provides a summary and conclusion.

II. THE MODEL

Bulk SrTiO_3 typically is an n -type semiconductor with a concentration of donors $N > 10^{17} \text{ cm}^{-3}$. Let us discuss the position of Fermi energy ε_F in such crystals. The electron spectrum near the bottom of the conduction band is complicated³⁵, and in order to make the problem of an accumulation layer tractable analytically we assume that it is isotropic and non-degenerate with the effective mass $m^* \simeq 1.5 m$,³⁶ where m is free electron mass. Within the hydrogenic theory of shallow donors, the donor Bohr radius is equal to κb , where $b = \hbar^2/m^*e^2 \simeq 0.35 \text{ \AA}$, e is the electron charge, and κ is dielectric constant of the material. At room temperature when $\kappa = 350$, the Bohr radius $\kappa b = 123 \text{ \AA}$ is so large that the Mott criterion for the metal-insulator transition in doped semiconductors $N_c b^3 = 0.02/\kappa^3$ leads to a very small critical concentration $N_c = 1 \cdot 10^{16} \text{ cm}^{-3}$. At helium temperatures $\kappa = 2 \cdot 10^4$ and $N_c = 6 \cdot 10^{10} \text{ cm}^{-3}$. Thus, at the experimentally relevant concentration of donors $N > 10^{17} \text{ cm}^{-3}$, we are dealing with a heavily doped semiconductor in which the Fermi energy lies in the conduction band of SrTiO_3 . On the other hand, due to the relatively high effective mass the bulk Fermi energy ε_F is smaller than the bending energy of the conduction band bottom near the interface (see Figs. 1 and 6). For example, for $N = 10^{18} \text{ cm}^{-3}$, the Fermi energy calculated from the bottom of the conduction band is $\varepsilon_F \simeq 4 \text{ meV}$, which can be up to 100 times smaller than the bending energy of the conduction band bottom in an accumulation layer for $\text{GdTiO}_3/\text{SrTiO}_3$. Therefore, we assume below that the Fermi energy coincides with the bottom of the conduction band.

We are interested in accumulation, inversion and depletion layers near an interface of SrTiO_3 . We consider the case when the axis x is directed perpendicular to the interface (plane $x = 0$) and lies along the $[100]$ axis of a cubic crystal of SrTiO_3 . (In fact, SrTiO_3 changes symmetry from cubic to tetragonal at $T \simeq 110\text{K}$, but the distortion is small³⁷ and can be neglected). An external electric field D_0 applied from the left (see Figs. 1, 4, 6) is directed along the x axis. In that case the problem is

effectively one-dimensional. If the charge density is denoted by $\rho(x)$, then the potential depth profile $\varphi(x)$ in the system is determined by the equations:

$$\frac{dD}{dx} = 4\pi\rho, \quad D = E + 4\pi P, \quad \frac{d\varphi}{dx} = -E, \quad (1)$$

where $D(x), E(x), P(x)$ are electric induction, electric field and polarization in SrTiO_3 . Equations (1) should be solved with proper boundary conditions. For example, for an accumulation layer the boundary conditions are $D(0) = D_0$ and $\varphi(\infty) = 0$.

To solve the system (1) one needs to know two material relationships $E(P)$ and $\rho(\varphi)$. Let us start from the lattice dielectric response $E(P)$. SrTiO_3 is well known as a quantum paraelectric, where the onset of ferroelectric order is suppressed by quantum fluctuations³⁸.

A powerful approach to describe the properties of ferroelectric-like materials is based on the Landau-Ginzburg theory. For a continuous second-order phase transition the Landau-Ginzburg expression of the free energy density F is represented as a power series expansion with respect to the polarization P :

$$F = F_0 + \frac{\tau}{2}P^2 + \frac{1}{4}A\frac{1}{P_0^2}P^4 - EP, \quad (2)$$

where F_0 stands for the free energy density at $P = 0$ and τ is the inverse susceptibility $\tau = 4\pi/(\kappa - 1) \simeq 4\pi/\kappa$. In this work $0 < \tau \ll 1$, $P_0 = e/a^2$ is the characteristic polarization and $a \simeq 3.9 \text{ \AA}$ ³⁷ is the lattice constant. The coefficient A describes the non-linear dielectric response. Analyzing the available data^{18,39-41} in Section VII we find values of A between 0.5 and 1.5. For all estimates below we use $A = 0.8$ following from Ref.⁴¹. The last term of Eq. (2) is responsible for the interaction between the polarization and the electric field E . In general F depends on the components of the vector P , but in the chosen geometry the problem is one-dimensional, and all vectors are directed along the x axis. The crystal polarization P is determined by minimizing the free energy density F in the presence of the electric field E , $\delta F/\delta P = 0$. This condition relates E and P ,

$$E = \frac{4\pi}{\kappa}P + \frac{A}{P_0^2}P^3. \quad (3)$$

We note that $E \ll 4\pi P$ and thus $D = E + 4\pi P \simeq 4\pi P$. The electric field D_c at which the transition from linear to nonlinear dielectric response occurs can be found by equating the first and second terms in the expression (3):

$$D_c = P_0 \sqrt{\frac{(4\pi)^3}{\kappa A}}. \quad (4)$$

If $D \ll D_c$ the dielectric response of SrTiO_3 is linear and one can use the simplified expression for the electric field:

$$E = \frac{D}{\kappa}. \quad (5)$$

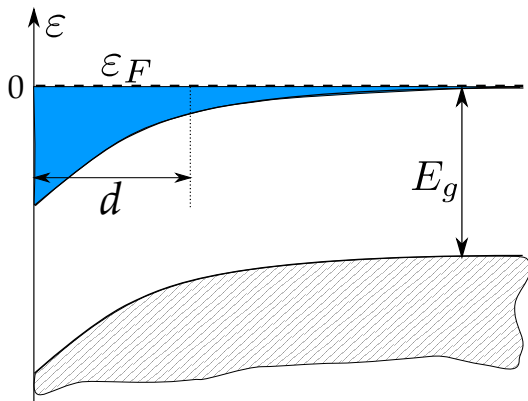


FIG. 1. (Color online) Schematic energy diagram of an accumulation layer in an n -doped semiconductor with band gap E_g . Electrons (blue region) are attracted by an external electric field D_0 . The characteristic width of the electron gas is d . In the bulk of SrTiO₃ the Fermi level ε_F is near the bottom of the conduction band (plotted by the dashed line)

For $D \gg D_c$ the dielectric response of SrTiO₃ is nonlinear and one must instead use the expression:

$$E = \frac{A}{(4\pi)^3 P_0^2} D^3. \quad (6)$$

Next one should specify $\rho(\varphi)$, which depends on the specific device of interest.

III. ACCUMULATION LAYER: THEORY

In an accumulation layer the external electric field D_0 attracts electrons with a three-dimensional concentration $n(x)$ (see Fig. 1). Our goal is to find the electron depth profile $n(x)$ and its characteristic width d .

Due to electric neutrality the number of accumulated electrons has to compensate the external field D_0 , i.e.

$$4\pi e \int_0^\infty n(x) dx = D_0. \quad (7)$$

To take into account the electron screening of the external field we use the Thomas-Fermi approach³² in which the electron concentration $n(x)$ and self-consistent potential profile $\varphi(x)$ are related as $e\varphi(x) + \mu(x) = \varepsilon_F = 0$, where

$$\mu(x) = (3\pi^2)^{2/3} \frac{\hbar^2}{2m} [n(x)]^{2/3} \quad (8)$$

is the chemical potential of the electron gas. Thus, one can obtain the solution of Eqs. (1) by replacing $\rho(x)$ with $en(x)$ and using relations (5), (6). For a linear dielectric response we obtain the equation for the potential:

$$\frac{d^2}{dx^2} \left(\frac{\varphi}{e/b} \right) = \frac{2^{7/2}}{3\pi} \frac{1}{b^2} \frac{1}{\kappa} \left(\frac{\varphi}{e/b} \right)^{3/2}. \quad (9)$$

We use the boundary condition $\varphi = 0$ at $x \rightarrow \infty$ and get the solution:

$$\varphi(x) = C_1 \frac{e}{b} \kappa^2 \left(\frac{b}{x+d} \right)^4, \quad (10)$$

$$n(x) = C_2 \frac{1}{b^3} \kappa^3 \left(\frac{b}{x+d} \right)^6, \quad (11)$$

where $C_1 = (225/8)\pi^2 \simeq 278$, $C_2 = 1125\pi/8 \simeq 442$. ($\varphi(0)$ was derived equivalently in Ref. 42 as a work function reduction for GaAs.) For a nonlinear dielectric response we obtain the equation for the potential:

$$\frac{d}{dx} \left[\left(\frac{d}{dx} \frac{\varphi}{e/b} \right)^{1/3} \right] = \frac{2^{7/2}}{3\pi} \frac{1}{b^2} \frac{A^{1/3}}{P_0^{2/3}} \left(\frac{\varphi}{e/b} \right)^{3/2}. \quad (12)$$

With the same boundary condition we get the solution:

$$\varphi(x) = C_3 \frac{e}{b} \left(\frac{b}{a} \right)^{8/7} \frac{1}{A^{2/7}} \left(\frac{b}{x+d} \right)^{8/7}, \quad (13)$$

$$n(x) = C_4 \frac{1}{b^3} \left(\frac{b}{a} \right)^{12/7} \frac{1}{A^{3/7}} \left(\frac{b}{x+d} \right)^{12/7}, \quad (14)$$

where $C_3 = [5^6 3^6 \pi^{12} / (7^8 2^3)]^{1/7} \simeq 5.8$, $C_4 = [5^9 3^2 \pi^4 2^6 / 7^{12}]^{1/7} \simeq 1.3$.

The characteristic length d can be obtained using the neutrality condition (see Eq. (7)). For a linear dielectric response this gives:

$$d = C_5 b \left(\frac{a}{b} \right)^{2/5} \kappa^{3/5} \left(\frac{e/a^2}{D_0} \right)^{1/5}, \quad (15)$$

where $C_5 = [\pi^2 225/2]^{1/5} \simeq 4$. For a nonlinear dielectric response:

$$d = C_6 b \left(\frac{a}{b} \right)^{2/5} \left(\frac{e/a^2}{D_0} \right)^{7/5} \frac{1}{A^{3/5}}, \quad (16)$$

where $C_6 = (16/7)(5^2 3^2 \pi^{11})^{1/5} \simeq 84$. The electric field D_c at which the transition from linear to nonlinear dielectric response occurs can be found from equating Eqs. (15) and (16). This gives

$$D_c = \frac{C_7}{\sqrt{A}} \frac{e}{a^2} \sqrt{\frac{1}{\kappa}}, \quad (17)$$

where $C_7 = (2^{21} \pi^9 / 7^5)^{1/6} \simeq 12$, consistent with Eq. (4). For SrTiO₃, the critical field D_c depends on temperature: $D_c \simeq 0.1e/a^2$ for helium temperature and $D_c \simeq 0.7e/a^2$ for room temperature.

The three dimensional concentration profile $n(x)$ for the nonlinear dielectric response Eq. (14) is the main

TABLE I. Percentage of electrons in the TiO₂ layer M of SrTiO₃ for $D_0 = 2\pi e/a^2$, corresponding to a total surface density of $0.5e/a^2$

M	1	2	3	4	5	6	7	8	9	10
%	27.9	14.4	9.0	6.2	4.6	3.5	2.8	2.3	1.9	1.6

result of our paper. Note that $n(x)$ has a very long tail with a weak $12/7$ power law dependence, which may lead to some arbitrariness in measurements of the width of the electron gas. Indeed, only 39% of electrons are located within the distance $0 < x < d$ near the interface and 68% of electrons are located within $0 < x < 4d$. In the calculation above we used a space-continuous model. Actually, along the [100] axis SrTiO₃ is composed of alternating TiO₂ and SrO layers. The conduction band of SrTiO₃ corresponds to the bands composed of mainly $3d$ orbitals of Ti. Integrating $n(x)$ over each lattice cell in Table (I) we get a percentage of electrons in each of the 10 first TiO₂ layers of SrTiO₃ for the case $D = 2\pi e/a^2$.

One can see from Eqs. (11) and (14) that the tails of the electron depth profiles $n(x)$ at $x \gg d$ do not depend on D_0 and behave like

$$C_2 \frac{1}{b^3} \kappa^3 \left(\frac{b}{x} \right)^6$$

and

$$C_4 \frac{1}{b^3} \left(\frac{b}{a} \right)^{12/7} \frac{1}{A^{3/7}} \left(\frac{b}{x} \right)^{12/7}$$

for linear and nonlinear dielectric responses, respectively. Even for $D_0 \gg D_c$ when the electron distribution $n(x)$ at moderately large x is described by dependence (14), at very large distances the polarization becomes smaller and the linear dielectric response takes over so that the $n(x)$ dependence switches from Eq. (14) to Eq. (11). This happens at the distance

$$x_0 = b \left(\frac{C_2}{C_4} \right)^{7/30} A^{1/10} \left(\frac{a}{b} \right)^{2/5} \kappa^{7/10}$$

($x_0 = 360$ nm and 20 nm for helium and room temperature respectively). Thus, the tail of $n(x)$ is universal. For small $D_0 < D_c$ the tail has the form $n(x) \propto x^{-6}$. For $D_0 > D_c$ it has the form $n(x) \propto x^{-12/7}$ for $x < x_0$ and $n(x) \propto x^{-6}$ for $x > x_0$.

On the other hand, one has to remember that our theory is correct only when $n(x)$ is larger than the concentration of donors in the bulk of the material.

Let us verify whether the Thomas-Fermi approximation is applicable, i.e., $k_F d \gg 1$. Here $k_F = (3\pi^2)^{1/3} n(0)^{1/3}$ is the wavevector of an electron at the Fermi level. For $D_0 \ll D_c$

$$k_F d = C_8 \kappa^{2/5} \left(\frac{b}{a} \right)^{2/5} \left(\frac{D_0}{e/a^2} \right)^{1/5}, \quad (18)$$

while for $D_0 \gg D_c$

$$k_F d = C_9 \frac{1}{A^{2/5}} \left(\frac{b}{a} \right)^{2/5} \left(\frac{e/a^2}{D_0} \right)^{3/5}, \quad (19)$$

where $C_8 = (5^3 3^3 \pi^3 / 2^4)^{1/5} \simeq 6$, $C_9 = 4/7(15\pi^3)^{3/5} \simeq 23$. One can see that $k_F d > 1$ in the range of $2 \cdot 10^{-7} e/a^2 < D_0 < 40 e/a^2$ for room temperature. For lower temperatures this interval is even larger. Thus, the Thomas-Fermi approximation is applicable for practically all reasonable electric fields D_0 .⁴³

IV. ACCUMULATION LAYER: COMPARISON WITH EXPERIMENTAL DATA

It is widely believed that an electron gas emerges near polar/non-polar interfaces such as LaAlO₃/SrTiO₃, GdTiO₃/SrTiO₃^{13,24}, LaVO₃/SrTiO₃⁴⁴, NdAlO₃/SrTiO₃, PrAlO₃/SrTiO₃, NdGaO₃/SrTiO₃⁴⁵, LaGaO₃/SrTiO₃⁴⁶ and LaTiO₃/SrTiO₃⁴⁷ due to the polar catastrophe¹⁶. For a large enough thickness of the polar crystal²⁷ the interface electron surface charge density

$$\sigma = e \int_0^\infty n(x) dx \quad (20)$$

is equal to $0.5e/a^2$, which corresponds to $D_0 = 2\pi e/a^2$ (see Eq. (7)). For any temperature this field is much larger than the critical field D_c and Eq. (19) gives $k_F d = 3$. Thus, we arrive at Eq. (14) for the electron concentration $n(x)$ and Eq. (16) shows that $d \simeq 6.7$ Å. In this case 68% of electrons are located within 2.7 nm. This result agrees with experimental estimates of the width of an electron gas near the GdTiO₃/SrTiO₃ interface²⁴. It also agrees with experimental data⁴⁸ for the γ -Al₂O₃/SrTiO₃ interface where a 2DEG is formed due to the formation of oxygen vacancies on SrTiO₃. In the case of δ -doped SrTiO₃ with one layer of La⁴⁹ one has two accumulation layers each with $\sigma = 0.5e/a^2$ and a similar width d .

To see how important the nonlinear dielectric response is, one can compare its prediction to the one obtained by assuming the response to be linear, given by Eq. (15). For $D = 2\pi e/a^2$ and helium temperature the linear dielectric response gives $d = 167$ nm. A similar result was obtained in Ref. 50, where the nonlinear dielectric response was not taken into account.

For the LaAlO₃/SrTiO₃ interface the number of electrons accumulated is apparently smaller than what the ‘‘polar catastrophe’’ scenario predicts. For example, only $\simeq 10\%$ of the electrons are seen in Hall measurements^{11,51,52}. In order to describe the electron concentration $n(x)$ for such a surface charge density, $\sigma = 0.05e/a^2$, one can still use Eq. (14) and Eq. (16). As a result, we arrive at a much larger value of $d \simeq 17$ nm.

We test our theory for the functional shape of $n(x)$ by comparing to experimental data for the electron distribution $n(x)$ near the interface of LaAlO₃/SrTiO₃ at

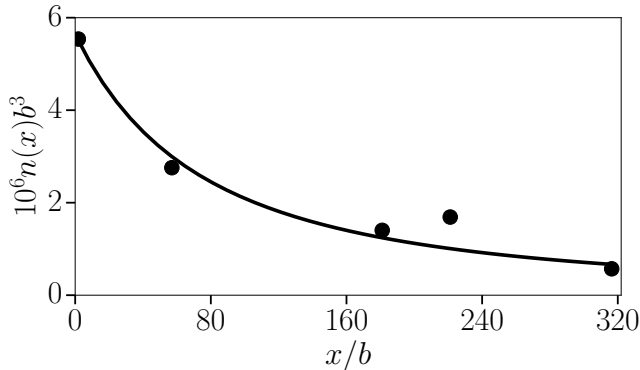


FIG. 2. The experimental distribution of electrons $n(x)$ from Ref. 23 is shown by circles in convenient dimensionless units. Fitting by Eq. (14) is shown by the solid line. The fitting parameter is $\sigma = 0.13e/a^2$, which gives $d \simeq 142b \simeq 5$ nm.

temperature $\simeq 10$ K²³ (see Fig. 2). For such small temperatures the critical field D_c is small and we fit the experimental data by Eq. (14) with $\sigma = D_0/4\pi$ as a fitting parameter and get $\sigma = 0.12e/a^2$ with $d \simeq 142b \simeq 5$ nm. Figure 2 shows satisfactory agreement between the data and the shape of $n(x)$ described by Eq. (14).

Let us now dwell upon the experimental data for $n(x)$ from Ref. 22. The data are obtained via time-resolved photoluminescence spectroscopy of the LaAlO₃/SrTiO₃ interface, where interface-induced electrons radiatively recombine with photoexcited holes in SrTiO₃. Following the assumption from Ref. 22 that the photoexcited holes are immobile, the concentration of holes p decays with time t according to the equation:

$$\frac{dp}{dt} = -r_1 p - r_2 [n(x)]^2 p, \quad (21)$$

where r_1 is the hole trapping rate, r_2 is the three carrier non-radiative Auger recombination coefficient. The authors of Ref. 22 used the decay of the photoluminescence intensity to obtain $n(x)$ in LaAlO₃/SrTiO₃ with the help of the coefficients r_1, r_2 from Ref. 53. The resulting $n(x)$ is shown in Fig. 3 by filled circles. We fit this data by the equation

$$n(x) = \frac{G}{(x+d)^{12/7}}, \quad (22)$$

which is similar to Eq. (14), but G is a fitting parameter independent of d . We see from Fig. 3 that this fit is good, however, the parameter G is seven times larger than the parameter $C_4(b/a)^{12/7}/A^{3/7}$ entering Eq. (14). This can be explained by a 50-fold increase of the Auger coefficient r_2 of Eq. (21) near the interface. A similar surface effect was observed in Ref. 54 for SrTiO₃ nanocrystals, where r_2 is almost 150 times larger than for bulk SrTiO₃.

From the fit we get $d = 250b \simeq 9$ nm, which corresponds to an electron surface charge density $\sigma = D_0/4\pi = 0.08e/a^2$ in agreement with other data^{11,23,51}.

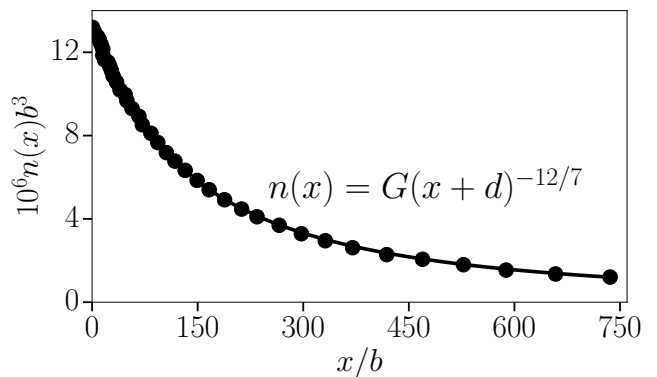


FIG. 3. The experimental distribution of electrons $n(x)$ (circles) from Ref. 22 obtained by time-resolved photoluminescence in convenient dimensionless units. Fitting with Eq. (22) is shown by the solid line. The fitting parameters are $G = 0.16$ and $d = 250b \simeq 9$ nm.

One can check that this result is self-consistent, i.e. for such σ one can use Eq. (14) for the fitting of experimental data, because $k_F d > 1$ (see Eq. (19)) and $D_0 > D_c$ (see Eq. (17)).

V. QUANTUM CAPACITANCE OF AN ACCUMULATION LAYER

In this section we address the capacitance of an accumulation layer, for example in the double junction Metal/GdTlO₃/SrTiO₃. If the width of insulating GdTlO₃ layer $L \gg d$ we may view an accumulation layer as a conducting two-dimensional gas (2DEG). One can apply a positive voltage V between the metal and the 2DEG and measure the additional charge per unit area σ' and $-\sigma'$, which are induced on the metal and in the 2DEG, respectively. The capacitance per unit area of junction is $C = d\sigma'/dV$. If we imagine that the 2DEG is a perfect metal, the additional charge $-\sigma'$ resides exactly in the plane of the GdTlO₃/SrTiO₃ junction and the capacitance is equal to the geometric capacitance $C = C_G = \kappa_G/4\pi L$, where $\kappa_G = 30$ is the dielectric constant of the GdTlO₃ layer. Actually, the accumulation layer is not a perfect metal so that an additional negative charge $-\sigma'$ is distributed in a layer of finite width d . As a result $C^{-1} = C_G^{-1} + C_q^{-1}$, where C_q is called the quantum capacitance⁵⁵. Quantum capacitance is broadly studied for many 2DEGs such as silicon MOSFETs⁵⁶, GaAs/Ga_xAl_{1-x}As hetero-structures⁵⁷ and graphene⁵⁸.

Concentrating on the case of $D_0 \gg D_c$ and using Eqs. (12) and (16) for the potential difference between $x = 0$ and $x = \infty$ we have at $\sigma' = 0$:

$$\varphi(0) = \frac{C_3}{C_6^{8/7}} \frac{e}{b} A^{2/5} \left(\frac{b}{a}\right)^{8/5} \left(\frac{D_0}{e/a^2}\right)^{8/5}. \quad (23)$$

After the transfer of charge $-\sigma'$ from the metal to the electron gas the potential changes as:

$$\Delta\varphi = \frac{C_3}{C_6^{8/7}} \frac{e}{b} A^{2/5} \left(\frac{b}{a}\right)^{8/5} \left[\left(\frac{D_0 + 4\pi\sigma'}{e/a^2}\right)^{8/5} - \left(\frac{D_0}{e/a^2}\right)^{8/5} \right]. \quad (24)$$

Assuming that $D_0 \gg 4\pi\sigma'$, linearizing $\Delta\varphi$ with respect of σ' and adding the voltage drop across the GdTiO₃ layer we get

$$V = \frac{e}{b} \frac{8}{5} \frac{C_3}{C_6^{8/7}} A^{2/5} \left(\frac{b}{a}\right)^{8/5} \frac{4\pi\sigma'}{e/a^2} \left(\frac{D_0}{e/a^2}\right)^{3/5} + \frac{4\pi L\sigma'}{\kappa_G}.$$

Using Eq. (16) for d we can write for the total capacitance:

$$C^{-1} = \frac{7}{5} \frac{4\pi d}{\kappa_{eff}} + \frac{4\pi L}{\kappa_G}, \quad (25)$$

where

$$\kappa_{eff} = \frac{(4\pi)^3}{A(D_0/(e/a^2))^2}$$

is the effective nonlinear dielectric constant D/E at $x = 0$ (see Eq. (6)). The first term of Eq. (25) is the inverse quantum capacitance C_q^{-1} , and the last term is the inverse geometric capacitance C_G^{-1} .

Due to the polar catastrophe in GdTiO₃ we get $D_0 = 2\pi e/a^2$ and $\kappa_{eff} = 63$. The ratio of inverse capacitances is

$$\frac{C_q^{-1}}{C_G^{-1}} = \frac{7}{5} \frac{\kappa_G}{\kappa_{eff}} \frac{d}{L}.$$

For $L = 40 \text{ \AA}$ we get $C_q^{-1}/C_G^{-1} = 0.1$. One can extend our calculation to the double junction SrTiO₃/GdTiO₃/SrTiO₃. In that case the inverse quantum capacitance is the sum of inverse quantum capacitances of both junctions.

VI. FROM ACCUMULATION TO INVERSION LAYER

In the previous section we considered an accumulation layer and showed that it can be described by the Thomas-Fermi approximation, when the Fermi level is near the bottom of the conduction band. But the Fermi level can be moved into the gap, for example, by a back gate. In a p -type inversion layer in SrTiO₃ (see Fig. 4) the Fermi level can be even deeper, at the top of the bulk valence band. In both cases, the charge of electrons compensates only a fraction of the external electric field D_0 , i. e. Eq. (7) is violated. For example, the rest of the negative charge in the inversion layer is provided by negative acceptors (see Fig. 4) and the electron surface charge density $\sigma < D_0/(4\pi)$. To calculate the width of

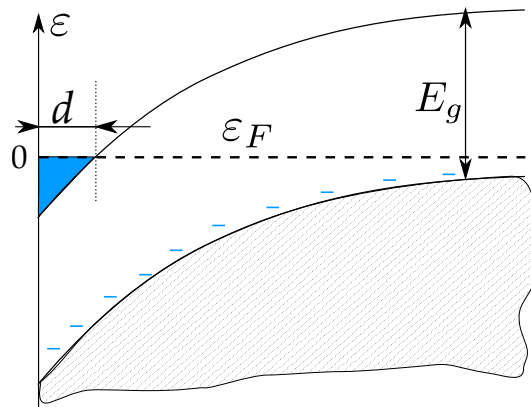


FIG. 4. (Color online) Inversion layer of a p -type semiconductor. Holes have been forced away by an external electric field D_0 . The field is so strong that it attracts mobile electrons (blue region) in the inversion layer with width d and total surface charge density σ . Negatively charged acceptors are shown by blue minuses. The Fermi level ε_F is plotted by a dashed line.

the electron density profile $d(\sigma, D_0)$ below we use a scaling approach, i.e. we neglect all numerical coefficients.

If the surface electron density is high enough $\sigma \gg e/d^2$, the electron gas is three-dimensional (3DEG), and one can use the Thomas-Fermi approach and the kinetic energy is

$$K = \frac{\hbar^2}{2m} \left(\frac{\sigma}{de}\right)^{2/3}$$

(see Fig. 5a). On the other hand at $\sigma \ll e/d^2$, the electrons are confined to the first sub-band of the triangular potential well, so that the electron gas is two dimensional (2DEG)⁵⁹. The electron kinetic energy is then

$$K = \frac{\hbar^2}{2md^2}.$$

In both cases, the characteristic potential energy of electrons is $U = eEd$ (see Fig.5b).

The dielectric response can be linear $E = D_0/\kappa$ or nonlinear $E = AD_0^3/P_0^2$ depending on whether the external electric field D_0 is smaller or larger than D_c , respectively. This gives us four cases which correspond to high $\sigma \gg e/d^2$ and low $\sigma \ll e/d^2$ electron charge density, small field, $D_0 \ll D_c$, and large field, $D_0 \gg D_c$. The diagram on Fig. 5c shows the combined scaling results for $d(\sigma, D)$ for all these four domains. We use σ as an independent coordinate because the three-dimensional concentration σ/d can be obtained by Hall effect measurements, while d can also be measured independently²².

First, let us consider the domain of high electron charge density $\sigma \gg e/d^2$ and small field $D_0 \ll D_c$. The kinetic energy is $K = \hbar^2/2m(\sigma/de)^{2/3}$ and the potential energy is $U = edD_0/\kappa$. From the condition $K = U$ one obtains:

$$d = b\kappa^{3/5} \frac{\sigma^{2/5}}{D_0^{3/5}} \left(\frac{e}{b^2}\right)^{1/5} \quad (26)$$

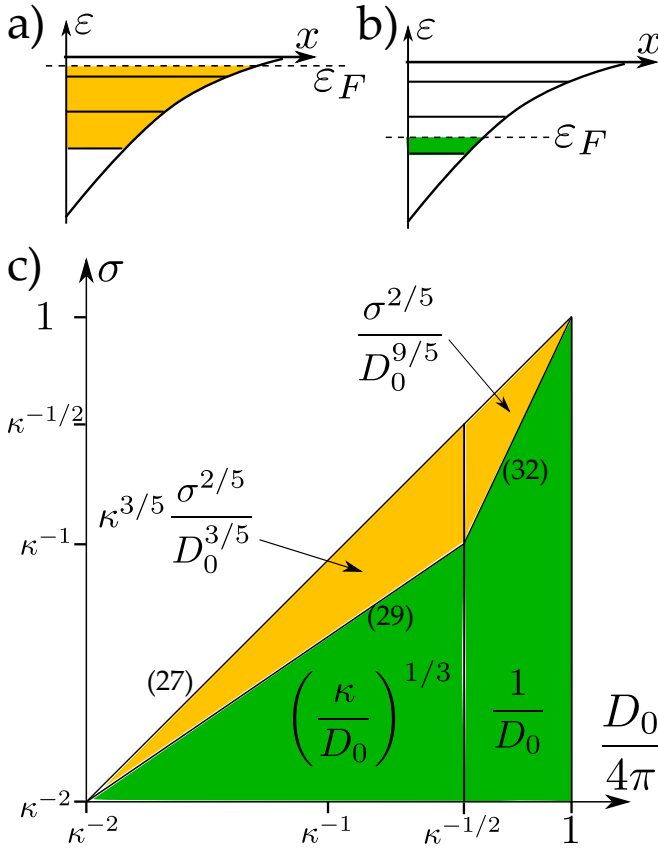


FIG. 5. (Color online) Schematic energy diagram for conduction band electrons in the triangular potential well created by an external electric field D_0 for two different cases: a) 3DEG, when many sub-bands are filled by electrons and b) 2DEG, when only the lowest sub-band is partially filled. This filling is shown by light yellow and dark green, respectively. c) Schematic phase diagram for the dependence of the width of electron gas d in units of b on electron surface charge density σ and external electric field D_0 both in the units e/b^2 for SrTiO₃ with dielectric constant κ . The four domains of this diagram correspond to four different formulas for d . If the electric field is small, $D_0 < 1/\sqrt{\kappa}$, the linear relation between electric field and electric induction, Eq. (5), is applicable. For $D_0 > 1/\sqrt{\kappa}$ Eq. (5) is replaced by the nonlinear relation Eq. (6). The light and dark grey (yellow and green in color) regions distinguish 3DEG and 2DEG cases. The border lines between domains are marked by numbers of corresponding equations (27), (29), (32).

(see Fig. 5c). When the neutrality relation (7) is satisfied

$$\sigma = \frac{D_0}{4\pi}, \quad (27)$$

we recover the previous accumulation layer result, Eq. (15). For low electron charge density $\sigma \ll e/d^2$ and small field $D_0 \ll D_c$ we get

$$d = b \left(\frac{\kappa e/b^2}{D_0} \right)^{1/3}. \quad (28)$$

This is the classical result for the width of the inversion

layer⁶⁰. The critical electron density at which the transition from low to high electron charge density occurs can be obtained from the condition $\sigma_c = e/d^2$ or from equating expressions (26) and (28) for d , giving

$$\sigma_c = \frac{e}{b^2} \frac{1}{\kappa^{2/3}} \left(\frac{D_0}{e/b^2} \right)^{2/3}. \quad (29)$$

We emphasize the difference between the two regimes of low (Eq. (28)) and high (Eq. (26)) electron charge densities. Sometimes^{14,25}, Eq. (28) for d of an inversion layer is used for an accumulation layer.

So far we described the two left, low D_0 ($D_0 < D_c = e/(a^2\sqrt{\kappa})$) domains of Fig. 5c. For a large field $D_0 \gg D_c$ and a high electron charge density $\sigma \gg e/d^2$ we get

$$d = b \left(\frac{b}{a} \right)^4 \frac{\sigma^{2/5}}{D_0^{9/5}} \left(\frac{e}{b^2} \right)^{7/5}. \quad (30)$$

At $\sigma = D/4\pi$, i.e. when the neutrality relation is satisfied, we get the previous result Eq. (16). At last, for a low electron charge density $\sigma \ll e/d^2$ and large field $D_0 \gg D_c$ we get

$$d = b \left(\frac{b}{a} \right)^{4/3} \frac{e/b^2}{D_0}. \quad (31)$$

The transition from low to high electron charge density at $D_0 \gg D_c$ occurs at the critical electron density:

$$\sigma_c = \frac{e}{b^2} \left(\frac{D_0}{e/b^2} \right)^2. \quad (32)$$

All four results Eqs. (26), (28), (30), (31) and all the border lines between different domains, Eqs. (27), (29), (32), are shown in Fig. 5c.

VII. DEPLETION LAYER

Schottky diodes are metal- n -type-SrTiO₃ junctions where the electron gas is depleted near the interface. Below we calculate the capacitance of this junction as a function of concentration of donors N and applied voltage V , which has been experimentally studied^{17–20}.

In order to calculate the capacitance of the Schottky diode let us consider Eqs. (1). We use the full depletion approximation, in which we assume that SrTiO₃ is fully depleted from electrons over a distance W from the surface (Fig. 6). The charge density in that region is due to the ionized donors with 3D concentration N :

$$\begin{aligned} \rho &= \frac{e}{a^3} (Na^3), \quad x < W, \\ \rho &= 0, \quad x > W. \end{aligned} \quad (33)$$

From equations (33) and (1), one can determine the dependence of the width W on the potential drop across the depletion layer $\Delta\varphi = \varphi(\infty) - \varphi(0) = V_0 - V > 0$,

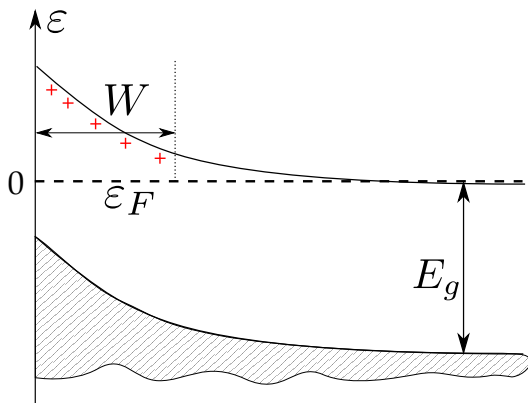


FIG. 6. (Color online) Schematic energy diagram of a depletion layer of n -doped semiconductor. Electrons have been forced away by an external electric field, which is created by negative charges on the surface of the semiconductor. As a result, the depletion layer with width W is filled by positively charged donors (red pluses).

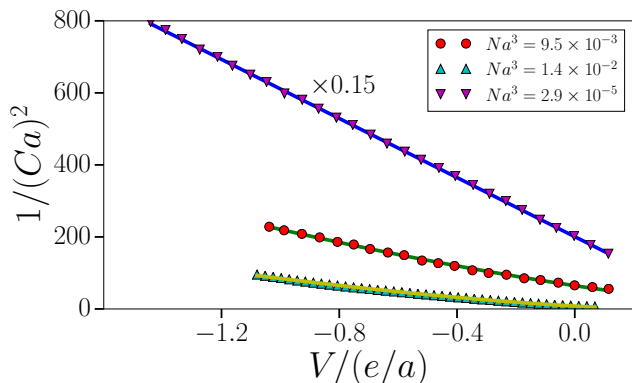


FIG. 7. (Color online) Experimental capacitance-voltage (C - V) characteristics at room temperature for Nb-doped SrTiO₃ for three values of the donor concentration N . The data for doping concentrations $Na^3 = 9.5 \cdot 10^{-3}$ and $Na^3 = 2.9 \cdot 10^{-5}$ are from Ref. 18, the one for concentration $Na^3 = 1.4 \cdot 10^{-2}$ are from Ref. 41. The capacitance and the voltage are measured in dimensionless units $1/a$ and e/a , where a is the lattice constant. Experimental results are shown by points. Solid lines correspond to fitting by Eq. (36) and by Eq. (37) for the smaller (upper line) and larger concentration (two lower lines), respectively.

where the negative voltage V is applied to the metal and V_0 is the potential difference between the work functions of SrTiO₃ and the metal. If $D_0 < D_c$ one can use the linear relation (5) to get:

$$\Delta\varphi = \frac{2\pi e}{\kappa a} (Na^3) \left(\frac{W}{a}\right)^2. \quad (34)$$

If $D_0 > D_c$, we use the nonlinear expression (6):

$$\Delta\varphi = A \frac{1}{4} \frac{e}{a} (Na^3)^3 \left(\frac{W}{a}\right)^4. \quad (35)$$

Now one can calculate the capacitance per unit area of the Schottky diode

$$C = \frac{dQ}{d\Delta\varphi} = eN \left| \frac{dW}{d\Delta\varphi} \right|.$$

This gives

$$\frac{1}{(Ca)^2} = \frac{8\pi}{\kappa} \left(\frac{V_0 - V}{e/a}\right) \frac{1}{Na^3} \quad (36)$$

for $D_0 < D_c$, and

$$\frac{1}{(Ca)^2} = 8 \left(\frac{V_0 - V}{e/a}\right)^{\frac{3}{2}} \left(\frac{A}{Na^3}\right)^{\frac{1}{2}} \quad (37)$$

for $D_0 > D_c$. With growing V the cross-over between Eqs. (36) and (37) happens at $V = V_c$ where:

$$V_c = V_0 - \frac{e}{a} \left(\frac{\pi}{\kappa}\right)^2 \frac{1}{ANa^3}. \quad (38)$$

To test our theoretical predictions we consider the experimental data obtained at room temperature for lightly and heavier Nb-doped SrTiO₃ of Ref. 18, $Na^3 = 2.9 \cdot 10^{-5}$ and $Na^3 = 9.5 \cdot 10^{-3}$ as well as the more heavily doped sample $Na^3 = 1.4 \cdot 10^{-2}$ of Ref. 41 (see Fig. 7). In the first case, one can expect D_0 to be small and we use Eq. (36) to fit the experimental data. Using κ and V_0 as fitting parameters we get $V_0 = 0.5e/a$, $\kappa \simeq 320$, which is close to the room temperature value $\kappa \simeq 350$ for SrTiO₃. For the heavier doped samples, one can expect that D_0 is large and use Eq. (37) to find A and V_0 from the experimental data. As a result, we get $V_0 = 0.8e/a$, $A \simeq 1.5$ and $V_0 = 0.26e/a$, $A \simeq 0.8$ for the data of Ref. 18 and 41 respectively.⁶¹

In Refs. 18, 39–41, and 62 $C(V)$ data are used to derive $\kappa(E) \equiv dD/dE$, which agrees with the Landau description⁴⁰. Extracting the parameter A from $\kappa(E)$ of Ref. 39 gives $A = 0.5$ while $\kappa(E)$ in Refs. 18 and 41 lead to the above mentioned values of A . The scatter of values of A probably can be explained by the effect of a non-controllable “dead layer” of low dielectric constant between SrTiO₃ and the metal^{18,41}.

It is believed⁴¹ the best interface was made in Ref. 41, whose data lead to $A \simeq 0.8$. Above we used this value for all numerical estimates.⁶³

VIII. DOES SPATIAL DISPERSION OF DIELECTRIC RESPONSE AFFECT THE ACCUMULATION LAYER?

So far we assumed that the external field D_0 and polarization P change abruptly at the interface, i.e., we have ignored the dispersion of the dielectric response. In this section we show that even without this assumption, the results of previous sections remain intact for SrTiO₃. We concentrate on an accumulation layer which can be

so narrow that the question of spatial dispersion arises. To take into account that the electric field and polarization can not change abruptly, in the geometry chosen above we add the gradient term $(1/2)a_0^2(dP/dx)^2$ to the Landau-Ginzburg free energy density Eq. (2). Here $a_0^2 = g_{xxxx}$ in the general expression for the gradient term

$$\frac{1}{2}g_{iklm}\frac{\partial P_i}{\partial x_k}\frac{\partial P_l}{\partial x_m},$$

and i, k, l, m enumerate the three coordinates x, y, z . Adding such a term necessitates an additional boundary condition for $P(x)$ at $x = 0$. The general form of this condition⁶⁴ is $P + \lambda dP/dx = 0$. It does not bring new physics into the problem if λ is large. Therefore, we explore the opposite case where λ can be ignored, $P(0) = 0$. From the condition $\partial F/\partial P = 0$ we get:

$$E = \frac{4\pi}{\kappa}P + \frac{A}{P_0^2}P^3 - a_0^2\frac{d^2P}{dx^2}. \quad (39)$$

Let us first find a solution to Eqs. (1) together with Eq. (39) for a system without electrons ($\rho(x) = 0$). The electrical induction $D_0 = E + 4\pi P$ is constant everywhere and we get an approximate solution for $E = D_0 - 4\pi P$:

$$E \simeq (D_0 - E_\infty)\exp\left(-\sqrt{4\pi}\frac{x}{a_0}\right) + E_\infty, \quad (40)$$

where $E_\infty = D_0/\kappa + (D_0/4\pi)^3/P_0^2$ is the electric field in the bulk.

Now, we take electrons into account and start from the case where in Eq. (39) $\kappa = \infty$ and $P_0 = \infty$, so that the role of the gradient term is emphasized. From the resulting equation $E = -a_0^2 d^2P/dx^2$ we get $\varphi = a_0^2 dP/dx$. (We take into account that at $x \rightarrow \infty$, $\varphi = dP/dx = 0$.) From the condition $dE/dx + 4\pi dP/dx = 4\pi e\rho$ we get an equation for the potential:

$$\frac{d^2\varphi}{dx^2} = \frac{4\pi}{a_0^2}\varphi + \frac{e}{b^3}\frac{2^{7/2}}{3\pi}\left(\frac{\varphi}{e/b}\right)^{3/2} \quad (41)$$

(compare with Eq. (9)). The solution to this equation, with boundary condition $\varphi(\infty) = 0$ is:

$$\varphi(x) = \frac{15^2\pi^4 eb^3}{2^7 a_0^4} \frac{1}{\sinh^4 X}, \quad (42)$$

where $X = \sqrt{\pi}(x + d)/2a_0$ and d is still an unknown length, which can be found from the boundary condition. Let us describe this solution. First, we see that the solution critically depends on the parameter X . If $X > 1$ or $x > a_0 - d$ then one arrives at Eq. (40): the electric field and potential decay exponentially to zero as $\propto \exp(-\sqrt{4\pi}x/a_0)$.

Let us consider the case when $X < 1$ or $x < a_0 - d$. In that case we get a result similar to Eq. (10), but with $\kappa = 1$

$$\varphi = \frac{225\pi^2}{8} \frac{eb^3}{(x + d)^4}. \quad (43)$$

Thus, at $x < a_0 - d$ the electrons screen the external field much faster than the lattice, and hence the latter does not participate appreciably in the screening response.

One can try to estimate d assuming that the majority of electrons are in the region $0 < x < a_0 - d$. In that case the potential is given by Eq. (43) and d can be found from the condition of neutrality (7):

$$d_1 = C_5 b \left(\frac{e/b^2}{D_0}\right)^{1/5}. \quad (44)$$

The condition $d_1 < a_0$ required for applicability of Eq. (43), is valid only when $D_0 \gg D_d$, where

$$D_d = C_5^5 b^3 \frac{e}{a_0^5} \simeq 1000 \left(\frac{a}{a_0}\right)^5 \left(\frac{b}{a}\right)^3 \frac{e}{a^2}. \quad (45)$$

Let us now consider the opposite case $D_0 \ll D_d$, where most of the electrons are not located in the region $x < a_0 - d$. In fact, to find where they are located one has to introduce finite κ and P_0 . The exponential decay of the electric field with x saturates at the level of E_∞ . At larger x we reach the electron gas with a larger width given by Eqs. (15) or (16) for linear and nonlinear dielectric responses respectively. In this case, the electron gas resides at large distances and our considerations of the previous section are valid.

If we return to finite κ and P_0 in Eq. (39) in the first case $D_0 \gg D_d$, we arrive to following hybrid picture. An electron gas screens most of the external field at small $x \simeq d_1$. At larger distances we again get exponential decay described by Eq. (40), which results from the lattice response. After this exponential decay the electron concentration $n(x)$ again follows Eq. (11) or Eq. (14), with the bulk value of the dielectric constant κ . In other words, the electron density has a two component distribution. The electrons nearest to the interface are likely localized due to disorder. This could, in principle, create hope to explain why at the LaAlO₃/SrTiO₃ interface only 10% of the electrons predicted by the polar catastrophe, $\sigma = 0.5.e/a^2$, are observed in transport measurements.

However, this hope does not survive for actual parameters of SrTiO₃, $b = 0.35\text{\AA}$, $a_0 = 1\text{\AA}$ ⁶⁵. Although for such parameters the Thomas-Fermi approximation is still valid, the electric field at which all electrons are located within the distance a_0 from the interface, $D_d = 650e/a^2$ is so large that $D_0 \ll D_d$ always. One may also worry that for such values of b and a_0 , which are smaller than the lattice constant a of SrTiO₃, the continuous theory that we use is not applicable.

However, the applicability of the continuous theory can be much better due to the so called background dielectric constant⁶⁵. Indeed, until now we have described the entire dielectric response by the Landau-Ginzburg theory for a single order parameter, which can be identified with the displacement of the transversal optical soft mode of SrTiO₃. This is a good approach when the dielectric response is very strong. However, near the interface the

response of the soft mode is weakened due to the dispersion and the response of other optical modes as well as the polarization of ions must be included. This is done⁶⁵ by the addition of the linear non-dispersive background dielectric constant, $10 < \kappa_b < 30$ ^{65,66}. To model this situation one can replace P by the soft mode contribution P_s in the free energy density (2) and add to it $(2\pi/\kappa_b)P_b^2 - EP_b$ while keeping $P = P_s + P_b$ in Eqs. (1). Here P_b is the background polarization.

As a result, the small distance dielectric constant becomes κ_b instead of 1 and the lengths b , a_0 and the characteristic field of Eq. (45) D_d are replaced by $b\kappa_b$, $a_0\sqrt{\kappa_b}$ and $D_d\kappa_b^{1/2}$, respectively. For $10 < \kappa_b < 30$ the characteristic lengths $b\kappa_b$ and $a_0\sqrt{\kappa_b}$ may reach the lattice constant a , thereby improving the applicability of our theory. At the same time the critical field D_d becomes even larger so that in all realistic situations, $D_0 \ll D_d$, all electrons are located at distances larger than the lattice constant a . This means that the dispersion does not play a substantial role and the dispersion-less approach used in the previous sections is applicable for describing accumulation, inversion and depletion layers in SrTiO₃.

IX. CONCLUSION

In this paper we studied the potential and electron density depth profiles in accumulation, inversion and depletion layers for materials with a very large dielectric constant and nonlinear dielectric response such as SrTiO₃. In particular, we showed that in a depletion layer at a given donor concentration and for high enough volt-

age, the dependence of the capacitance on voltage decreases as $C \propto V^{-3/4}$, which is substantially different from the conventional result $C \propto V^{-1/2}$ with linear dielectric response. For an inversion layer we found that the layer width depends on the external electric field D_0 as $d \propto (\kappa/D_0)^{1/3}$ and $d \propto 1/D_0$ for linear and nonlinear dielectric responses, respectively. In accumulation layers near interfaces like GdTiO₃/SrTiO₃, LaTiO₃/SrTiO₃, LaAlO₃/SrTiO₃ we obtained $n(x) \propto (x+d)^{-12/7}$ with $d \propto D_0^{-7/5}$, due to the nonlinearity of the dielectric response. We found that 70% of electrons are located within 2.6 nm of the interfaces GdTiO₃/SrTiO₃ and LaTiO₃/SrTiO₃ (where the electron surface charge density is $\sigma = 0.5e/a^2$) in agreement with experimental data. The predicted functional shape of the electron depth profile $n(x)$ also shows satisfactory agreement with the experimental data. Spatial dispersion in the dielectric response was shown to be negligible for the description of potential and electron density depth profiles in SrTiO₃ devices. This paper uses a simplified isotropic electron spectrum, while the electronic structure of SrTiO₃ is multiorbital in nature. In future work we plan to go beyond our simplified description.

ACKNOWLEDGMENTS

We are grateful to A. P. Levanyuk and S. Stemmer for reading the manuscript and attracting our attention to a number of important references. We thank R. M. Fernandes, B. Jalan, A. Kamenev, B. Skinner, C. Leighton, A. J. Millis, A. Sirenko and P. Wölffe for helpful discussions. This work was supported primarily by the National Science Foundation through the University of Minnesota MRSEC under Award Number DMR-1420013.

-
- * Reich@mail.ioffe.ru
- ¹ J. Chakhalian, J. W. Freeland, A. J. Millis, C. Panagopoulos, and J. M. Rondinelli, *Rev. Mod. Phys.* **86**, 1189 (2014).
 - ² S. Stemmer and S. J. Allen, *Annual Review of Materials Research* **44**, 151 (2014).
 - ³ P. Zubko, S. Gariglio, M. Gabay, P. Ghosez, and J.-M. Triscone, *Annual Review of Condensed Matter Physics* **2**, 141 (2011).
 - ⁴ J. A. Noland, *Phys. Rev.* **94**, 724 (1954).
 - ⁵ A. Ohtomo and H. Y. Hwang, *Nature* **427**, 423 (2004).
 - ⁶ Y. Xie, C. Bell, Y. Hikita, S. Harashima, and H. Y. Hwang, *Advanced Materials* **25**, 4735 (2013).
 - ⁷ A. P. Kajdos, D. G. Ouellette, T. A. Cain, and S. Stemmer, *Applied Physics Letters* **103**, 082120 (2013).
 - ⁸ B. Jalan, S. Stemmer, S. Mack, and S. J. Allen, *Phys. Rev. B* **82**, 081103 (2010).
 - ⁹ Y. Kozuka, M. Kim, H. Ohta, Y. Hikita, C. Bell, and H. Y. Hwang, *Applied Physics Letters* **97**, 222115 (2010).
 - ¹⁰ A. M. Kaiser, A. X. Gray, G. Conti, B. Jalan, A. P. Kajdos, A. Gloskovskii, S. Ueda, Y. Yamashita, K. Kobayashi, W. Drube, S. Stemmer, and C. S. Fadley, *Applied Physics Letters* **100**, 261603 (2012).
 - ¹¹ S. Thiel, G. Hammerl, A. Schmehl, C. W. Schneider, and J. Mannhart, *Science* **313**, 1942 (2006).
 - ¹² M. Hosoda, C. Bell, Y. Hikita, and H. Y. Hwang, *Applied Physics Letters* **102**, 091601 (2013).
 - ¹³ M. Boucherit, O. Shoron, C. A. Jackson, T. A. Cain, M. L. C. Buffon, C. Polchinski, S. Stemmer, and S. Rajan, *Applied Physics Letters* **104**, 182904 (2014).
 - ¹⁴ K. Ueno, S. Nakamura, H. Shimotani, A. Ohtomo, N. Kimura, T. Nojima, H. Aoki, Y. Iwasa, and M. Kawasaki, *Nat Mater* **7**, 855 (2008).
 - ¹⁵ P. Gallagher, M. Lee, J. R. Williams, and D. Goldhaber-Gordon, *Nature Physics* **10**, 748 (2014).
 - ¹⁶ N. Nakagawa, H. Y. Hwang, and D. A. Muller, *Nature Materials*, 204209 (2006).
 - ¹⁷ Y. Hikita, M. Kawamura, C. Bell, and H. Y. Hwang, *Applied Physics Letters* **98**, 192103 (2011).
 - ¹⁸ T. Yamamoto, S. Suzuki, H. Suzuki, K. Kawaguchi, K. Takahashi, and Y. Yoshisato, *Japanese Journal of Applied Physics* **36**, L390 (1997).
 - ¹⁹ Y. Hikita, Y. Kozuka, T. Susaki, H. Takagi, and H. Y. Hwang, *Applied Physics Letters* **90**, 143507 (2007).
 - ²⁰ A. Verma, S. Raghavan, S. Stemmer, and D. Jena, *Applied Physics Letters* **105**, 113512 (2014).

- ²¹ M. Minohara, Y. Hikita, C. Bell, H. Inoue, M. Hosoda, H. K. Sato, H. Kumigashira, M. Oshima, E. Ikenaga, and H. Y. Hwang, arXiv:1403.5594 (2014).
- ²² Y. Yamada, H. K. Sato, Y. Hikita, H. Y. Hwang, and Y. Kanemitsu, Applied Physics Letters **104**, 151907 (2014).
- ²³ A. Dubroka, M. Rössle, K. W. Kim, V. K. Malik, L. Schultz, S. Thiel, C. W. Schneider, J. Mannhart, G. Herranz, O. Copie, M. Bibes, A. Barthélémy, and C. Bernhard, Phys. Rev. Lett. **104**, 156807 (2010).
- ²⁴ P. Moetakef, T. A. Cain, D. G. Ouellette, J. Y. Zhang, D. O. Klenov, A. Janotti, C. G. Van de Walle, S. Rajan, S. J. Allen, and S. Stemmer, Applied Physics Letters **99**, 232116 (2011).
- ²⁵ G. Khalsa and A. H. MacDonald, Phys. Rev. B **86**, 125121 (2012).
- ²⁶ M. Stengel, Phys. Rev. Lett. **106**, 136803 (2011).
- ²⁷ W.-j. Son, E. Cho, B. Lee, J. Lee, and S. Han, Phys. Rev. B **79**, 245411 (2009).
- ²⁸ S. Y. Park and A. J. Millis, Phys. Rev. B **87**, 205145 (2013).
- ²⁹ J. T. Haraldsen, P. Wölfle, and A. V. Balatsky, Phys. Rev. B **85**, 134501 (2012).
- ³⁰ V. Ginzburg, J. Phys. USSR **10**, 107 (1946).
- ³¹ L. D. Landau and E. M. Lifshitz, *Statistical Physics: Volume 5 (Course of Theoretical Physics)* (Butterworth-Heinemann; 3 edition, 1980) p. 564.
- ³² L. H. Thomas, Mathematical Proceedings of the Cambridge Philosophical Society **23**, 542 (1927).
- ³³ S. E. Rowley, L. J. Spalek, R. P. Smith, M. P. M. Dean, M. Itoh, J. F. Scott, G. G. Lonzarich, and S. S. Saxena, Nature Physics **10**, 367 (2014).
- ³⁴ I.-S. Kim, M. Itoh, and T. Nakamura, Journal of Solid State Chemistry **101**, 77 (1992).
- ³⁵ D. van der Marel, J. van Mechelen, and I. Mazin, Phys. Rev. B **84**, 205111 (2011).
- ³⁶ M. Ahrens, R. Merkle, B. Rahmati, and J. Maier, Physica B: Condensed Matter **393**, 239 (2007).
- ³⁷ F. W. Lytle, Journal of Applied Physics **35**, 2212 (1964).
- ³⁸ M. Itoh, R. Wang, Y. Inaguma, T. Yamaguchi, Y.-J. Shan, and T. Nakamura, Phys. Rev. Lett. **82**, 3540 (1999).
- ³⁹ R. A. van der Berg, P. W. M. Blom, J. F. M. Cillessen, and R. M. Wolf, Applied Physics Letters **66**, 697 (1995).
- ⁴⁰ T. Yamamoto, S. Suzuki, K. Kawaguchi, and K. Takahashi, Japanese Journal of Applied Physics **37**, 4737 (1998).
- ⁴¹ E. Mikheev, B. D. Hoskins, D. B. Strukov, and S. Stemmer, Nat Comms **5** (2014), 10.1038/ncomms4990.
- ⁴² R. Stratton, Proceedings of the Physical Society. Section B **68**, 746 (1955).
- ⁴³ So far we considered only two limiting cases: the linear and nonlinear dielectric responses, which are correct for $D_0 \ll D_c$ and $D_0 \gg D_c$ respectively. In fact one can analytically solve Eqs. (1) with Eq. (3) assuming that $D = 4\pi P$. For example, in Ref. 67 the polarization profile of a charged “head-to-head” domain wall in a ferroelectric was calculated. In the ferroelectric phase, the spontaneous polarization in the domain is approximately equal to our D_c . Therefore a charged domain wall, considered in Ref. 67, should be compared with our accumulation layer at the crossover value of the electric field, $D_0 = D_c$. Indeed, our results Eqs. (11), (15) taken at $D_0 = D_c$ agree with those for the charged domain wall.
- ⁴⁴ C. He, T. D. Sanders, M. T. Gray, F. J. Wong, V. V. Mehta, and Y. Suzuki, Phys. Rev. B **86**, 081401 (2012).
- ⁴⁵ A. Annadi, A. Putra, Z. Q. Liu, X. Wang, K. Gopinadhan, Z. Huang, S. Dhar, T. Venkatesan, and Ariando, Phys. Rev. B **86**, 085450 (2012).
- ⁴⁶ P. Perna, D. Maccariello, M. Radovic, U. Scotti di Uccio, I. Pallecchi, M. Codda, D. Marr, C. Cantoni, J. Gazquez, M. Varela, S. J. Pennycook, and F. M. Granozio, Applied Physics Letters **97**, 152111 (2010).
- ⁴⁷ R. Ohtsuka, M. Matvejeff, K. Nishio, R. Takahashi, and M. Lippmaa, Applied Physics Letters **96**, 192111 (2010).
- ⁴⁸ Y. Z. Chen, N. Bovet, F. Trier, D. V. Christensen, F. M. Qu, N. H. Andersen, T. Kasama, W. Zhang, R. Giraud, J. Dufouleur, T. S. Jespersen, J. R. Sun, A. Smith, J. Nygaard, L. Lu, B. Bchner, B. G. Shen, S. Linderoth, and N. Pryds, Nature Communications **4**, 1371 (2013).
- ⁴⁹ A. Ohtomo, D. A. Muller, J. L. Grazul, and H. Y. Hwang, Nature **419**, 378 (2002).
- ⁵⁰ W. Siemons, G. Koster, H. Yamamoto, W. A. Harrison, G. Lucovsky, T. H. Geballe, D. H. Blank, and M. R. Beasley, Phys. Rev. Lett. **98**, 196802 (2007).
- ⁵¹ A. D. Caviglia, S. Gariglio, N. Reyren, D. Jaccard, T. Schneider, M. Gabay, S. Thiel, G. Hammerl, J. Mannhart, and J.-M. Triscone, Nature **456**, 624 (2008).
- ⁵² S. Mathew, A. Annadi, T. K. Chan, T. C. Asmara, D. Zhan, X. R. Wang, S. Azimi, Z. Shen, A. Rusydi, Ariando, M. B. H. Breese, and T. Venkatesan, ACS Nano **7**, 10572 (2013).
- ⁵³ Y. Yamada, H. Yasuda, T. Tayagaki, and Y. Kanemitsu, Applied Physics Letters **95**, 121112 (2009).
- ⁵⁴ Y. Yamada, K. Suzuki, and Y. Kanemitsu, Applied Physics Letters **99**, 093101 (2011).
- ⁵⁵ S. Luryi, Applied Physics Letters **52**, 501 (1988).
- ⁵⁶ S. Kravchenko, D. Rinberg, S. Semenchinsky, and V. Pudalov, Phys. Rev. B **42**, 3741 (1990).
- ⁵⁷ J. P. Eisenstein, L. N. Pfeiffer, and K. W. West, Phys. Rev. Lett. **68**, 674 (1992).
- ⁵⁸ L. Ponomarenko, R. Yang, R. Gorbachev, P. Blake, A. Mayorov, K. Novoselov, M. Katsnelson, and A. Geim, Phys. Rev. Lett. **105**, 136801 (2010).
- ⁵⁹ T. Ando, A. B. Fowler, and F. Stern, Rev. Mod. Phys. **54**, 437 (1982).
- ⁶⁰ F. Stern, Phys. Rev. B **5**, 4891 (1972).
- ⁶¹ One can verify whether Eqs. (36) and (37) are applicable for describing the capacitance-voltage characteristics. To do this we consider the critical voltage (38). For small concentration $V_c \simeq -2e/a$ is smaller than the experimental voltage V (see Fig. 7). It means that using Eq. (36) is justified. For high concentrations $V_c \simeq 0.8e/a$ or $0.26e/a$ is larger than the experimental voltage V . For such voltages one can use Eq. (37).
- ⁶² D. Kahng and S. H. Wemple, Journal of Applied Physics **36**, 2925 (1965).
- ⁶³ Note that there are several other methods^{68,69} to study the non-linear dielectric response, but they deal with relatively weak electric fields, while we are interested in strong electric fields.
- ⁶⁴ R. Kretschmer and K. Binder, Phys. Rev. B **20**, 1065 (1979).
- ⁶⁵ A. K. Tagantsev and G. Gerra, Journal of Applied Physics **100**, 051607 (2006).
- ⁶⁶ R. D. Shannon, Journal of Applied Physics **73**, 348 (1993).
- ⁶⁷ M. Y. Gureev, A. K. Tagantsev, and N. Setter, Physical Review B **83** (2011), 10.1103/physrevb.83.184104.

- ⁶⁸ R. C. Neville, B. Hoeneisen, and C. A. Mead, *Journal of Applied Physics* **43**, 2124 (1972).
- ⁶⁹ P. A. Fleury and J. M. Worlock, *Phys. Rev.* **174**, 613 (1968).